

Excellent Integrated System Limited

Stocking Distributor

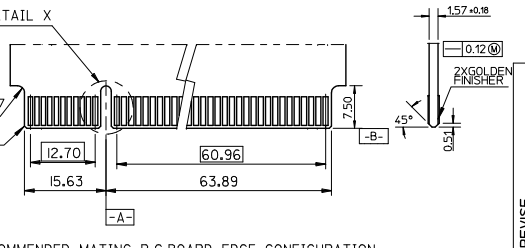
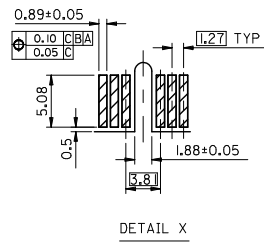
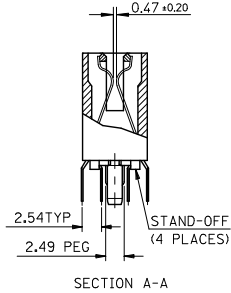
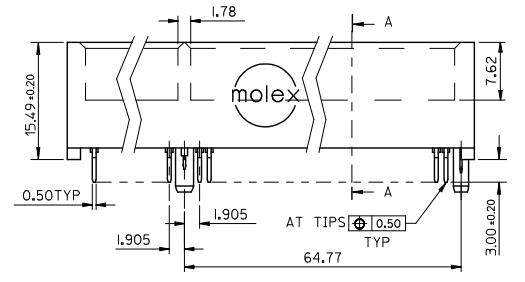
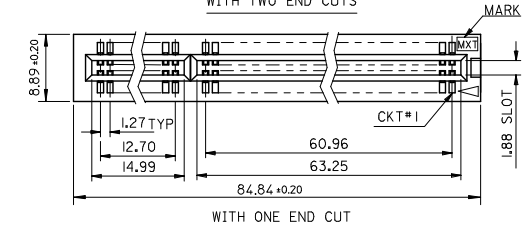
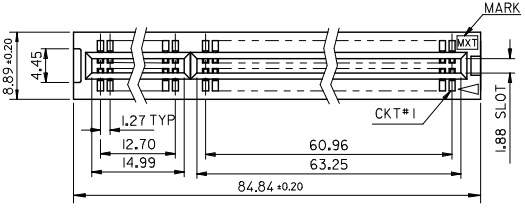
Click to view price, real time Inventory, Delivery & Lifecycle Information:

[Molex Connector Corporation](#)
[0482006000](#)

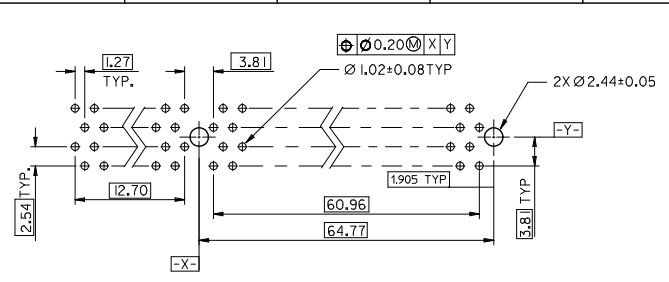
For any questions, you can email us directly:

sales@integrated-circuit.com

10 9 8 7 6 5 4 3 2 1



RECOMMENDED MATING P.C.BOARD EDGE CONFIGURATION



RECOMMENDED CONNECTOR MOUNTING HOLE PATTERN

- NOTES:
- MATERIAL : HOUSING - PPS
TERMINAL - PHOSPHOR BRONZE.
 - FINISH 0 - GOLD FLASH IN CONTACT AREA, 152um/60In MIN. TIN IN SOLDER TAIL, BOTH OVER 0.76um/30In MIN. NICKEL OVERALL.
1 - 0.25um/10In MIN. GOLD IN CONTACT AREA, 152um/60In MIN. TIN IN SOLDER TAIL, BOTH OVER 0.76um/30In MIN. NICKEL OVERALL.
2 - 0.38um/15In MIN. GOLD IN CONTACT AREA, 152um/60In MIN. TIN IN SOLDER TAIL, BOTH OVER 0.76um/30In MIN. NICKEL OVERALL.
3 - 0.76um/30In MIN. GOLD IN CONTACT AREA, 152um/60In MIN. TIN IN SOLDER TAIL, BOTH OVER 0.76um/30In MIN. NICKEL OVERALL.
4 - 0.50um/20In MIN. GOLD IN CONTACT AREA, 152um/60In MIN. TIN IN SOLDER TAIL, BOTH OVER 0.76um/30In MIN. NICKEL OVERALL.
 - PRODUCT SPEC : PER PS-48200-001
 - TEST SUMMARY : PER TS-48200-001
 - PACKAGE SPEC : PER PK-48200-001
 - LEAD-FREE AND ROHS COMPLIANCE PRODUCT
- PART NO. LEGEND : 48200 - 6 0 * * *
- | | |
|--|-----------------|
| PEG VERSION & COLOR | PLATING VERSION |
| 0 : STANDARD ; BROWN , WITH ONE END CUT | 0 |
| 1 : STANDARD ; WHITE , WITH ONE END CUT | 1 |
| 2 : STANDARD ; BROWN , WITH TWO END CUTS | 2 |
| 3 : STANDARD ; BROWN , WITH TWO END CUTS | 3 |
| 4 : STANDARD ; WHITE , WITH TWO END CUTS | 4 |

REVISE EC NO: SH2009-0692 DRAWN: YANGOS CHKD: 2009/05/11 APPR: HMMANG 2009/06/26	DESCRIPTION 2X GOLDEN FINISHER	GENERAL TOLERANCES (UNLESS SPECIFIED)		DIMENSION STYLE MM ONLY		SCALE	DESIGN UNITS METRIC	THIRD ANGLE PROJECTION	
		mm	INCH	DRAWN BY TOM	DATE 2005/02/04	TITLE	ASS'Y 1.27MM EDGE CARD CONNECTOR (120 CKTS) (LEAD-FREE VERSION)		
D	REV	4 PLACES ± --- ± ---	± --- ± ---	CHECKED BY	DATE	MATERIAL NO. SEE TABLE	DOCUMENT NO. SD-48200-003	SHEET NO. 1 OF 1	
		3 PLACES ± --- ± ---	± --- ± ---	ALL IN	2005/02/04			MOLEX INCORPORATED	
		2 PLACES ± 0.25 ± ---	± --- ± ---	APPROVED BY	DATE	THIS DRAWING CONTAINS INFORMATION THAT IS PROPRIETARY TO MOLEX INCORPORATED AND SHOULD NOT BE USED WITHOUT WRITTEN PERMISSION			
		1 PLACE ± 0.25 ± ---	± --- ± ---	WWSCHANG 2005/02/04					
		ANGULAR ± 3 °							
		DRAFT WHERE APPLICABLE MUST REMAIN WITHIN DIMENSIONS							

10 9 8 7 6 5 4 3 2 1