

Excellent Integrated System Limited

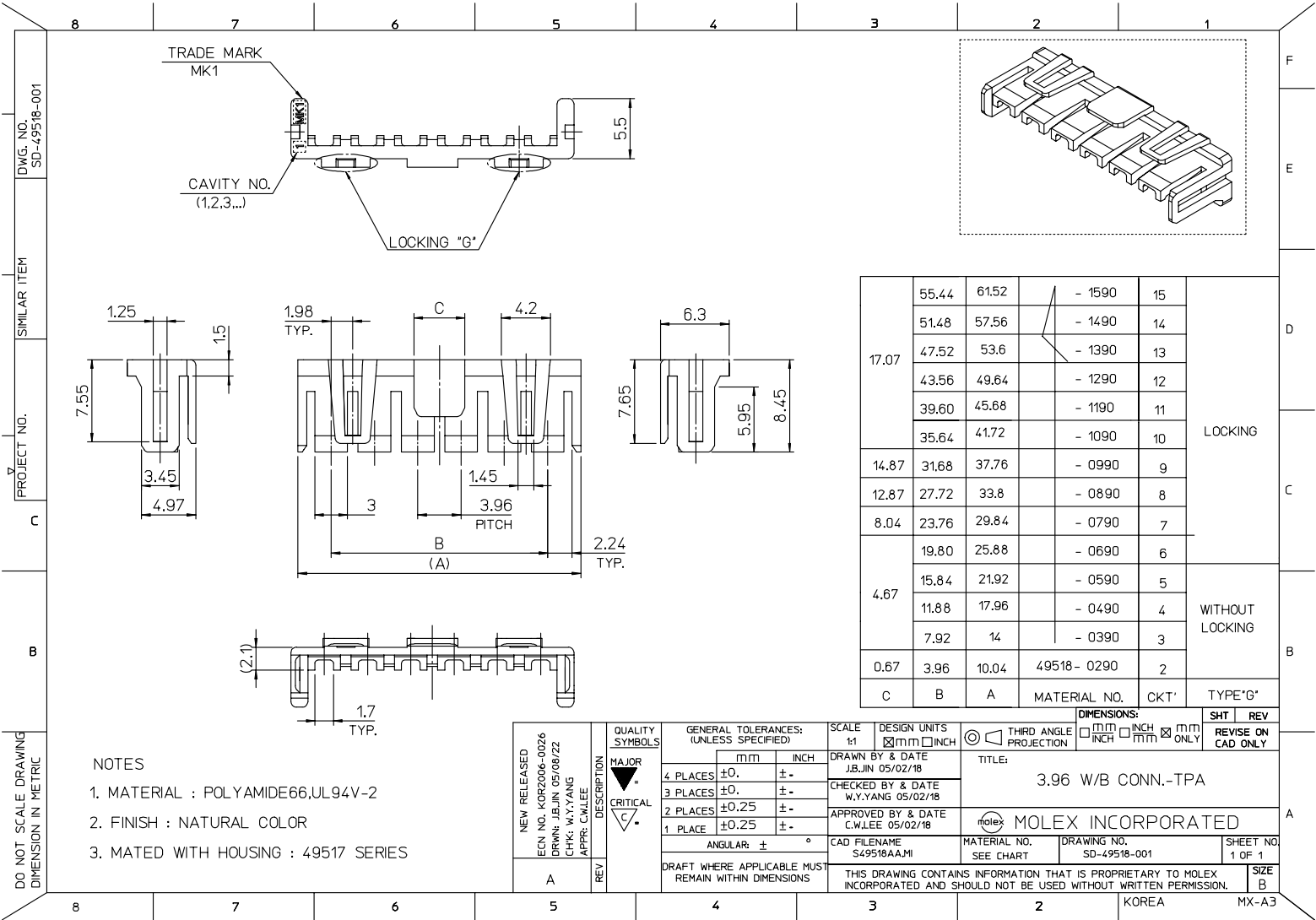
Stocking Distributor

Click to view price, real time Inventory, Delivery & Lifecycle Information:

[Molex Connector Corporation](#)
[0495180390](#)

For any questions, you can email us directly:

sales@integrated-circuit.com



DWG. NO. SD-49518-001
 PROJECT NO. SD-49518-001
 SIMILAR ITEM
 PROJECT NO.
 C
 B
 DO NOT SCALE DRAWING DIMENSION IN METRIC

- NOTES
- MATERIAL : POLYAMIDE66,UL94V-2
 - FINISH : NATURAL COLOR
 - MATED WITH HOUSING : 49517 SERIES

NEW RELEASED	DESCRIPTION
ECN NO. KOR2006-0026	MAJOR
DRWN: JBJIN 05/08/22	CRITICAL
CHK: W.Y.YANG	
APPR: CWLEE	
REV	
A	

GENERAL TOLERANCES: (UNLESS SPECIFIED)	
4 PLACES	±0.15 ±-
3 PLACES	±0.25 ±-
2 PLACES	±0.25 ±-
1 PLACE	±0.25 ±-
ANGULAR: ± 0°	
DRAFT WHERE APPLICABLE MUST REMAIN WITHIN DIMENSIONS	

SCALE 1:1	DESIGN UNITS <input checked="" type="checkbox"/> mm <input type="checkbox"/> INCH	THIRD ANGLE PROJECTION	DIMENSIONS: <input type="checkbox"/> mm <input type="checkbox"/> INCH <input checked="" type="checkbox"/> mm ONLY	SHT 1	REV
DRAWN BY & DATE J.BJIN 05/02/18		TITLE: 3.96 W/B CONN.-TPA			
CHECKED BY & DATE W.Y.YANG 05/02/18		MOLEX INCORPORATED			
APPROVED BY & DATE C.WLEE 05/02/18		CAD FILENAME S49518AA.MI	MATERIAL NO. SEE CHART	DRAWING NO. SD-49518-001	SHEET NO. 1 OF 1
THIS DRAWING CONTAINS INFORMATION THAT IS PROPRIETARY TO MOLEX INCORPORATED AND SHOULD NOT BE USED WITHOUT WRITTEN PERMISSION.					SIZE B
KOREA					MX-A3