

## Excellent Integrated System Limited

Stocking Distributor

Click to view price, real time Inventory, Delivery & Lifecycle Information:

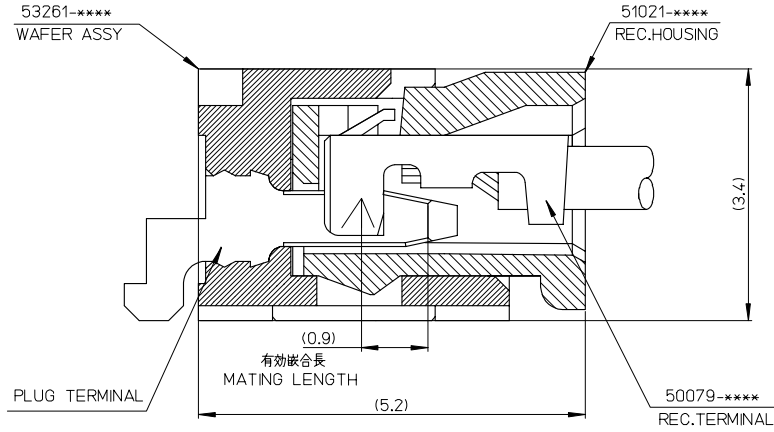
[Molex Connector Corporation](#)  
[0510210201](#)

For any questions, you can email us directly:

[sales@integrated-circuit.com](mailto:sales@integrated-circuit.com)

10 9 8 7 6 5 4 3 2 1

F  
E  
D  
C  
B  
A

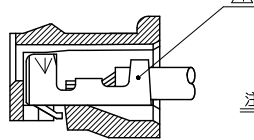
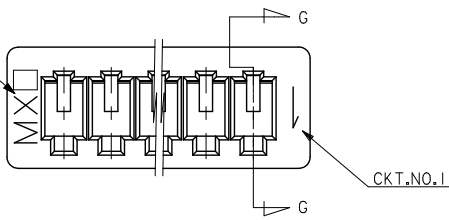


|            |            |                        |
|------------|------------|------------------------|
| 53261-**** | WAFER ASSY | MODEL NO./MATERIAL NO. |
| 50079-**** | TERMINAL   |                        |
| 51021-**** | HOUSING    |                        |

|   |                                       |       |  |                    |  |                        |
|---|---------------------------------------|-------|--|--------------------|--|------------------------|
| RELEASED<br>EC NO: J2006-2426<br>DRAWN: A0YAGI<br>CHKD: MAEDA<br>APPR: NIKITA<br>2006/02/02<br>2006/02/03<br>2006/02/07 | GENERAL TOLERANCES (UNLESS SPECIFIED) |       | DIMENSION STYLE<br>MM ONLY                           | SCALE<br>---       | DESIGN UNITS<br>METRIC   | THIRD ANGLE PROJECTION |
|   | 10 UNDER                              | ±---  | DRAWN BY<br>Y. A0YAGI                                | DATE<br>2006/01/30 | TITLE<br>1.25 W-T-O-B CONN.<br>51021,53261<br>MATING CROSS SECTION |                        |
|   | 10 OVER 30 UNDER                      | ±---  | CHECKED BY<br>Y. MAEDA                               | DATE<br>2006/01/30 | MOLEX INCORPORATED   |                        |
|   | 30 OVER                               | ±---  | APPROVED BY<br>N. UKITA                              | DATE<br>2006/01/30 | MATERIAL NO. SEE CHART<br>DOCUMENT NO. SD-51021-002                |                        |
| 0   | ANGULAR                               | ±---° | DRAFT WHERE APPLICABLE MUST REMAIN WITHIN DIMENSIONS |                    | SHEET NO. 1 OF 1   |                        |

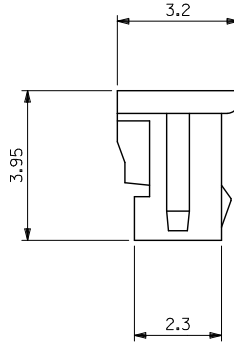
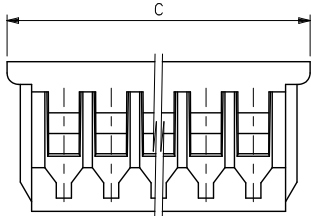
10 9 8 7 6 5 4 3 2 1

トレードマーク  
TRADE MARK

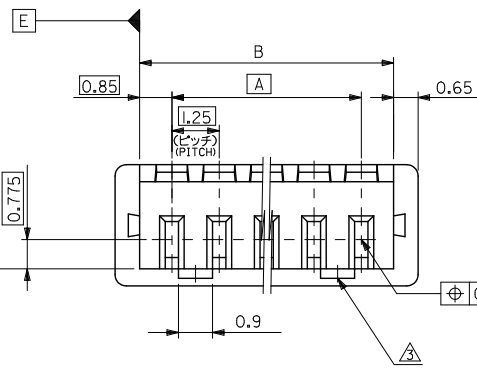


注記 NOTES

- △ 適合ターミナル : 50058, 50079 シリーズ  
APPLICABLE TERMINAL : 50058, 50079 SERIES
- 2 嵌合相手 : 53047, 53048, 53261, 53398 シリーズ  
MATE WITH : 53047, 53048, 53261, 53398 SERIES
- △ ロックは、2, 3種は1ヶ, 4種以上は2ヶとする。  
LOCKING WINDOW : ONE PLACE FOR 2 & 3 CKT.  
AND TWO PLACES FOR MORE THAN 3 CKT.
- △ ワエハーの色 COLOR OF WAFER  
ENG. NO. の下1桁に対応する。  
CORRESPONDS TO LAST DIGIT OF ENG.NO.  
黒 BLACK :51021-\*\*01  
赤 RED :51021-\*\*02  
黄 YELLOW :51021-\*\*03  
青 BLUE :51021-\*\*04



|       |       |       |             |             |
|-------|-------|-------|-------------|-------------|
| 23    | 21.7  | 20    | 51021 -170* | 17          |
| 20.5  | 19.2  | 17.5  | -150*       | 15          |
| 19.25 | 17.95 | 16.25 | -140*       | 14          |
| 18    | 16.7  | 15    | -130*       | 13          |
| 16.75 | 15.45 | 13.75 | -120*       | 12          |
| 15.5  | 14.2  | 12.5  | -110*       | 11          |
| 14.25 | 12.95 | 11.25 | -100*       | 10          |
| 13    | 11.7  | 10    | -090*       | 9           |
| 11.75 | 10.45 | 8.75  | -080*       | 8           |
| 10.5  | 9.2   | 7.5   | -070*       | 7           |
| 9.25  | 7.95  | 6.25  | -060*       | 6           |
| 8     | 6.7   | 5     | -050*       | 5           |
| 6.75  | 5.45  | 3.75  | -040*       | 4           |
| 5.5   | 4.2   | 2.5   | -030*       | 3           |
| 4.25  | 2.95  | 1.25  | 51021 -020* | 2           |
| C     | B     | A     | ENG.NO. △   | 極数<br>CRTS. |



MATERIAL  
PBTP UL94V-0

|  |                                       |              |                 |  |              |   |
|--|---------------------------------------|--------------|-----------------|--|--------------|---|
| REVISED<br>EC NO. J2011-1763<br>2011/06/17<br>DRAWN BY<br>CHIKIDAKAKAWA<br>2011/06/29<br>CHECKED BY<br>APPR. NIKITA<br>2011/06/30<br>DESCRIPTION | GENERAL TOLERANCES (UNLESS SPECIFIED) |              | DIMENSION STYLE | SCALE  | DESIGN UNITS | THIRD ANGLE<br>PROJECTION               |
|  | (UNLESS SPECIFIED)                    |              | MM ONLY         | 10:1   | METRIC       |   |
|  | 10 UNDER                              | ± 0.2        | TASAKAWA        | DRAWN BY   | DATE         | TITLE                                   |
|  | 10 OVER 30 UNDER                      | ± 0.25       | HIRAMOTO        | '95/05/31  |              | 1.25 W/ B CONN.REC.HS'G<br>(DYED COLOR) |
| 30 OVER  | ± 0.3                                 | MFUKUSHIMA   | '95/05/31       |  |              |   |
| ANGULAR ±3 °   |                                       | MATERIAL NO. |                 | MOLEX INCORPORATED   |              | SHEET NO.                               |
| DRAFT WHERE APPLICABLE<br>MUST REMAIN<br>WITHIN DIMENSIONS   |                                       | SEE TABLE    |                 | DOCUMENT NO.   |              | 1 OF 1                                  |
|  |                                       | SIZE<br>A3   |                 | THIS DRAWING CONTAINS INFORMATION THAT IS PROPRIETARY TO MOLEX<br>INCORPORATED AND SHOULD NOT BE USED WITHOUT WRITTEN PERMISSION |              |   |