

Excellent Integrated System Limited

Stocking Distributor

Click to view price, real time Inventory, Delivery & Lifecycle Information:

[Molex Connector Corporation](#)
[0510360500](#)

For any questions, you can email us directly:

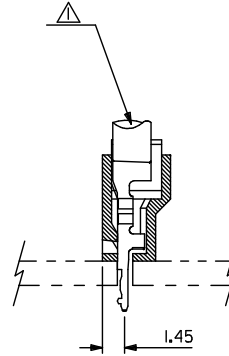
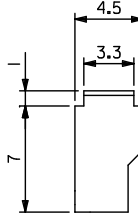
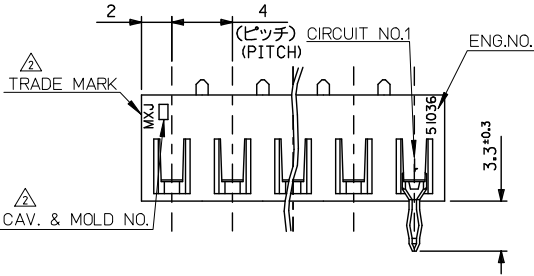
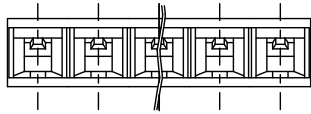
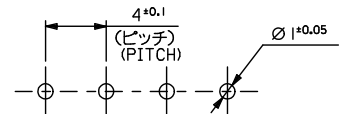
sales@integrated-circuit.com

10 9 8 7 6 5 4 3 2 1

注記
NOTE

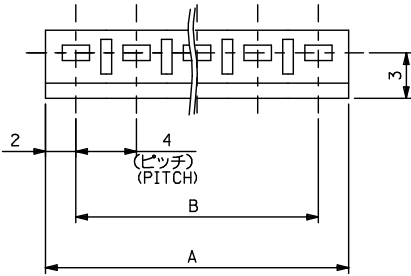
- △ 適合ターミナル: 500978*00
APPLICABLE: 500978*00
 - △ トレードマーク: MXJにて表示。
キャビティ番号: 1桁から2桁の数字にて表示。 金型番号: アルファベット1文字にて表示。
- TRADE MARK IS FORMED BY MXJ
AND BY 1-2 DIGIT NUMBER (TO CAVITY NO.)
AND BY 1 LETTER OF ALPHABET (TO MOLD NO.)
3. ELV及びRoHS適合品
ELV AND RoHS COMPLIANT.

(公差非累積)
(NON-ACCUMULATIVE)



基板取付穴推奨寸法(基板厚: 1.6mm)
RECOMMENDED PC BOARD
HOLE DIMENSION
(THICKNESS: 1.6mm)

56	60	51036	1500	15
52	56		1400	14
48	52		1300	13
44	48		1200	12
40	44		1100	11
36	40		1000	10
32	36		0900	9
28	32		0800	8
24	28		0700	7
20	24		0600	6
16	20		0500	5
12	16		0400	4
8	12		0300	3
4	8	51036	0200	2
B	A	ENG.NO.		2



材料
MATERIAL
POLYAMIDE,UL94V-0

適用電線範囲
WIRE RANGE
AWG#22~18,AV0.5~0.85

被覆外径
INS. RANGE
φ1.8~2.6

REVISED 2012/01/20 2012/09/15 2013/05/28 2013/05/28	DESCRIPTION G DRINKWASHIO CHIKIDAKAKAWA APPR:MIKITA	GENERAL TOLERANCES (UNLESS SPECIFIED)		DIMENSION STYLE MM ONLY		SCALE 4:1	DESIGN UNITS METRIC	THIRD ANGLE PROJECTION
		10 UNDER	±0.2	DRAWN BY KSANO	DATE 1996/06/30	TITLE 4.0 BOARD IN CONNECTOR HOUSING		
		10 OVER 30 UNDER	±0.25	CHECKED BY MSAKANO	DATE 1996/06/30	DOCUMENT NO. SD-51036-001		
		30 OVER	±0.3	APPROVED BY MENOMOTO	DATE 1996/06/30			
ANGULAR ±3°		DRAFT WHERE APPLICABLE MUST REMAIN WITHIN DIMENSIONS		SEE CHART		SHEET NO. 1 OF 1		
THIS DRAWING CONTAINS INFORMATION THAT IS PROPRIETARY TO MOLEX INCORPORATED AND SHOULD NOT BE USED WITHOUT WRITTEN PERMISSION								

9 8 7 6 5 4 3 2 1