

Excellent Integrated System Limited

Stocking Distributor

Click to view price, real time Inventory, Delivery & Lifecycle Information:

[Molex Connector Corporation](#)
[0510361300](#)

For any questions, you can email us directly:

sales@integrated-circuit.com

10 9 8 7 6 5 4 3 2 1

注記
NOTE

△ 適合ターミナル: 500978*00

△ APPLICABLE: 500978*00

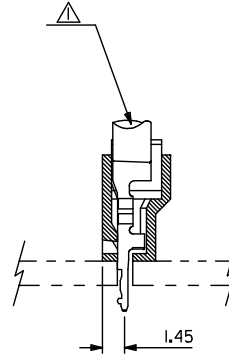
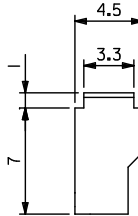
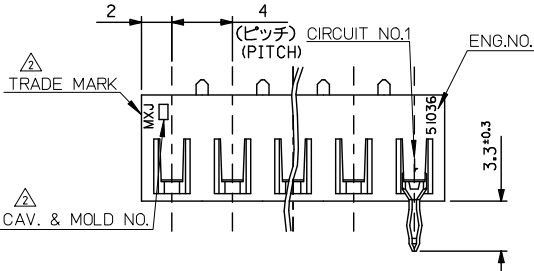
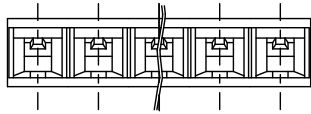
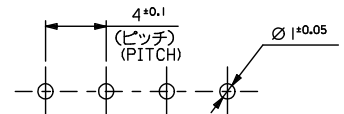
△ トレードマーク: MXJにて表示。

キャビティ番号: 1桁から2桁の数字にて表示。 金型番号: アルファベット1文字にて表示。

TRADE MARK IS FORMED BY MXJ
AND BY 1-2 DIGIT NUMBER (TO CAVITY NO.)
AND BY 1 LETTER OD ALPHABET (TO MOLD NO.)

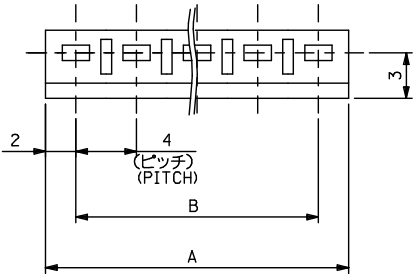
3. ELV及びRoHS適合品
ELV AND RoHS COMPLIANT.

(公差非累積)
(NON-ACCUMULATIVE)



基板取付穴推奨寸法(基板厚: 1.6mm)
RECOMMENDED PC BOARD
HOLE DIMENSION
(THICKNESS: 1.6mm)

56	60	51036	I500	I5
52	56		I400	I4
48	52		I300	I3
44	48		I200	I2
40	44		I100	I1
36	40		I000	I0
32	36		0900	9
28	32		0800	8
24	28		0700	7
20	24		0600	6
16	20		0500	5
12	16		0400	4
8	12		0300	3
4	8	51036	0200	2
B	A		ENG.NO.	標記



材料
MATERIAL
POLYAMIDE,UL94V-0
適用電線範囲
WIRE RANGE
AWG#22~18,AV0.5~0.85
AVS0.3~0.85
被覆外径
INS. RANGE
φ1.8~2.6

REVISED 2012/01/20 2012-09/15 DRAWN BY CHIKIDAKAKAWA APPROXIMATA 2013/05/28	GENERAL TOLERANCES (UNLESS SPECIFIED)		DIMENSION STYLE MM ONLY		SCALE 4:1	DESIGN UNITS METRIC	THIRD ANGLE PROJECTION
	10 UNDER	± 0.2	DRAWN BY KSANO	DATE 1996/06/30	TITLE 4.0 BOARD IN CONNECTOR HOUSING		
G 2012/01/20 2012-09/15 DRAWN BY CHIKIDAKAKAWA APPROXIMATA 2013/05/28	10 OVER 30 UNDER	± 0.25	CHECKED BY MSAKANO	DATE 1996/06/30	DOCUMENT NO. SD-51036-001		
	30 OVER	± 0.3	APPROVED BY MENOMOTO	DATE 1996/06/30	SHEET NO. 1 OF 1		
ANGULAR ± 3 °		DRAFT WHERE APPLICABLE MUST REMAIN WITHIN DIMENSIONS		MATERIAL NO. SEE CHART			
SIZE A3 THIS DRAWING CONTAINS INFORMATION THAT IS PROPRIETARY TO MOLEX INCORPORATED AND SHOULD NOT BE USED WITHOUT WRITTEN PERMISSION							