

## **Excellent Integrated System Limited**

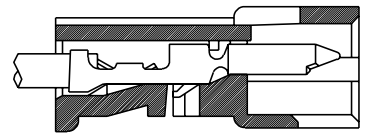
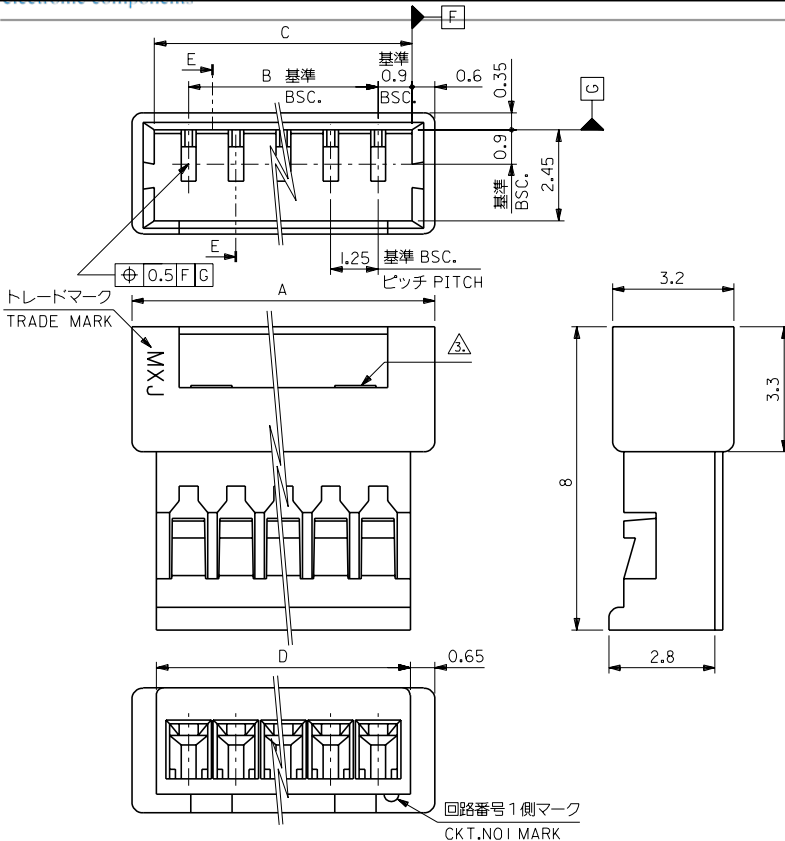
Stocking Distributor

Click to view price, real time Inventory, Delivery & Lifecycle Information:

[Molex Connector Corporation](#)  
[0510471000](#)

For any questions, you can email us directly:  
[sales@integrated-circuit.com](mailto:sales@integrated-circuit.com)

DWG. NO. SD-51047-\*\*\*00



断面E-E  
SECT. E-E

注) NOTE.

- △ 適合ターミナル: 50125-8\*00, 50133-8\*00  
APPLICABLE TERMINAL: 50125-8\*00, 50133-8\*00
- 2. 嵌合相手: 51021-\*\*\*00  
MATE WITH: 51021-\*\*\*00
- △ ロック窓は、2、3極は1ヶ、4極以上は2ヶとする。  
LOCKING WINDOW: ONE PLACE FOR 2AND3CKT. AND TWO PLACES FOR MORE THAN 4CKT.

12.95	14.25	13.05	11.25	51047-1000	10
11.7	13	11.8	10	↑ -0900	9
10.45	11.75	10.55	8.75	↑ -0800	8
9.2	10.5	9.3	7.5	↑ -0700	7
7.95	9.25	8.05	6.25	↑ -0600	6
6.7	8	6.8	5	↑ -0500	5
5.45	6.75	5.55	3.75	↑ -0400	4
4.2	5.5	4.3	2.5	↑ -0300	3
2.95	4.25	3.05	1.25	↑ -0200	2
D	A	C	B	ENG.NO.	極数 CKT.

DO NOT SCALE DRAWING		EC NO. DRWN: CHK: APPR:		EC NO. DRWN: CHK: APPR:		EC NO. DRWN: CHK: APPR:		EC NO. DRWN: CHK: APPR:		REDRAWN EC NO. JC2000-0629 DRWN: K.KOHAMA CHK: T.YAMAGUCHI APP: M.FUKUSHIMA		MATERIAL 材料 ポリエステル ,UL94V-0 POLYESTER ,UL94V-0		GENERAL TOLERANCES: (UNLESS SPECIFIED) 一般公差		SCALE 10:1		DESIGN UNITS mm INCH		THIRD ANGLE PROJECTION		DIMENSIONS: mm INCH mm ONLY		SHT REV	
												FINISH 仕上げ		10 UNDER 未満		±0.2		DRAWN BY & DATE K.KOHAMA 00/ 3/28		TITLE: 1.25 W/W CONN. PLG HSG.					
												WIRE RANGE 適用電線範囲		10 OVER 以上		±0.25		CHECKED BY & DATE T.YAMAGUCHI 00/ 3/30		MOLEX INCORPORATED					
												INS. RANGE 被覆外径		30 UNDER 未満		±0.3		APPROVED BY & DATE M.FUKUSHIMA 00/ 3/30		MATERIAL NO. 51047-***00		DRAWING NO. SD-51047-***00			
												ANGLE 角度		±3°				CAD FILENAME S51047.S10		SHEET NO. 1		SIZE B			
																				THIS DRAWING CONTAINS INFORMATION THAT IS PROPRIETARY TO MOLEX INCORPORATED AND SHOULD NOT BE USED WITHOUT WRITTEN PERMISSION.		EN-02(J097) MXJ-54			