

Excellent Integrated System Limited

Stocking Distributor

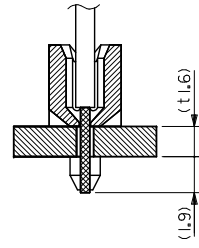
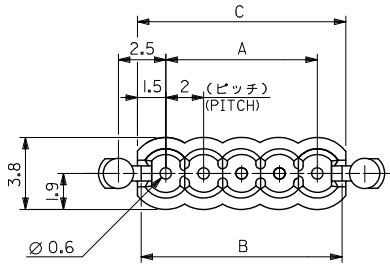
Click to view price, real time Inventory, Delivery & Lifecycle Information:

[Molex Connector Corporation](#)
[0510480610](#)

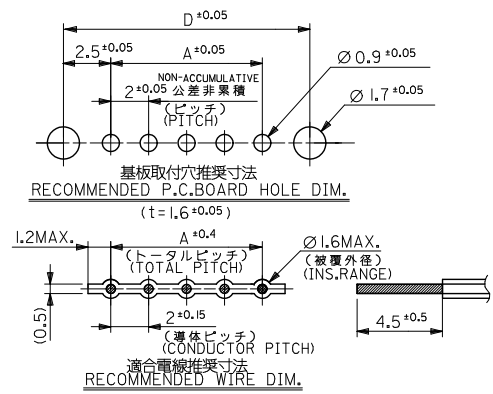
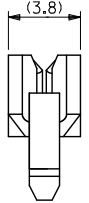
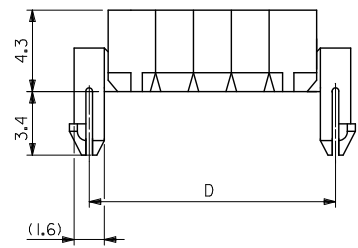
For any questions, you can email us directly:

sales@integrated-circuit.com

10 9 8 7 6 5 4 3 2 1



電線挿入図
SECT.(CABLE ASS'Y)



基板取付穴推奨寸法
RECOMMENDED P.C.BOARD HOLE DIM.
(t = 1.6 ± 0.05)

適合電線推奨寸法
RECOMMENDED WIRE DIM.

37	35	34.6	32	51048-1710	17
35	33	32.6	30	-1610	16
33	31	30.6	28	-1510	15
31	29	28.6	26	-1410	14
29	27	26.6	24	-1310	13
27	25	24.6	22	-1210	12
25	23	22.6	20	-1110	11
23	21	20.6	18	-1010	10
21	19	18.6	16	-0910	9
19	17	16.6	14	-0810	8
17	15	14.6	12	-0710	7
15	13	12.6	10	-0610	6
13	11	10.6	8	-0510	5
11	9	8.6	6	-0410	4
9	7	6.6	4	-0310	3
7	5	4.6	2	51048-0210	2
D	C	B	A	ENG. NO.	機敏 CKTS.

注記
NOTES

- 材料: ナイロン66, UL94V-0
MATERIAL: NYLON66, UL94V-0
- 適合電線: 2mmピッチリボンケーブル
AWG#26鍍コート平行線
APPLICABLE WIRE: 2mm PITCH RIBBON CABLE WIRE
AWG#26, TOP COATED WIRE
Ø1.6 MAX.

REVISED EC NO. J2012-0577 DRAWN: SATO02 2011/10/31 CHKD: KAKAWA 2011/10/31 APPR: Y010 2011/10/31	GENERAL TOLERANCES (UNLESS SPECIFIED)		DIMENSION STYLE MM ONLY	SCALE 5:1	DESIGN UNITS METRIC	THIRD ANGLE PROJECTION
	10 UNDER	± 0.2	DRAWN BY H. SEKINE	DATE '89/9/14	TITLE 2.0MM PITCH CABLE HOLDER (FOR 4.5MM STRIP LENGTH)	
	10 OVER 30 UNDER	± 0.25	CHECKED BY	DATE	APPROVED BY Y010	
	30 OVER	± 0.3	APPROVED BY Y010		DATE 2011/10/31	MOLEX INCORPORATED
	ANGULAR ± 3 °	DRAFT WHERE APPLICABLE MUST REMAIN WITHIN DIMENSIONS		MATERIAL NO.	DOCUMENT NO. SD-51048-**10	SHEET NO. 1 OF 1
		SEE CHART		THIS DRAWING CONTAINS INFORMATION THAT IS PROPRIETARY TO MOLEX INCORPORATED AND SHOULD NOT BE USED WITHOUT WRITTEN PERMISSION		