

Excellent Integrated System Limited

Stocking Distributor

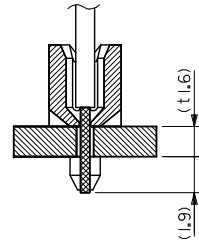
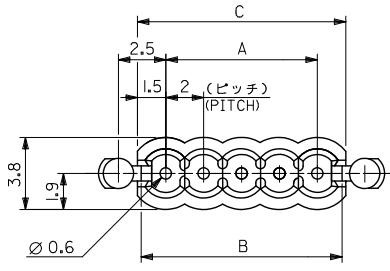
Click to view price, real time Inventory, Delivery & Lifecycle Information:

[Molex Connector Corporation](#)
[0510481310](#)

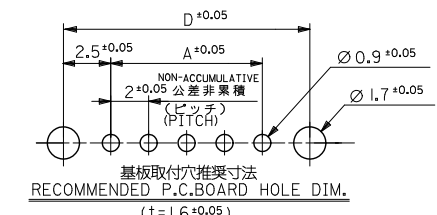
For any questions, you can email us directly:

sales@integrated-circuit.com

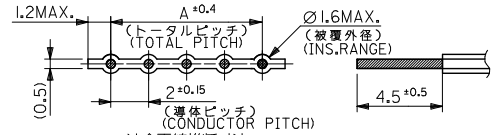
10 9 8 7 6 5 4 3 2 1



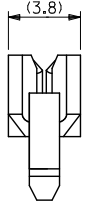
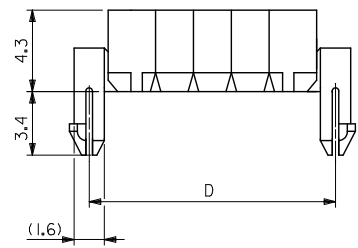
電線挿入図
SECT.(CABLE ASS'Y)



基板取付穴推奨寸法
RECOMMENDED P.C.BOARD HOLE DIM.
(t = 1.6 ± 0.05)



適合電線推奨寸法
RECOMMENDED WIRE DIM.



注記
NOTES

- 材料: ナイロン66, UL94V-0
MATERIAL: NYLON66, UL94V-0
- 適合電線: 2mmピッチリボンケーブル
AWG#26鍍コート平行線
APPLICABLE WIRE: 2mm PITCH RIBBON CABLE WIRE
AWG#26, TOP COATED WIRE
Ø1.6 MAX.

| | | | | | |
|----|----|------|----|------------|-------------|
| 37 | 35 | 34.6 | 32 | 51048-1710 | 17 |
| 35 | 33 | 32.6 | 30 | -1610 | 16 |
| 33 | 31 | 30.6 | 28 | -1510 | 15 |
| 31 | 29 | 28.6 | 26 | -1410 | 14 |
| 29 | 27 | 26.6 | 24 | -1310 | 13 |
| 27 | 25 | 24.6 | 22 | -1210 | 12 |
| 25 | 23 | 22.6 | 20 | -1110 | 11 |
| 23 | 21 | 20.6 | 18 | -1010 | 10 |
| 21 | 19 | 18.6 | 16 | -0910 | 9 |
| 19 | 17 | 16.6 | 14 | -0810 | 8 |
| 17 | 15 | 14.6 | 12 | -0710 | 7 |
| 15 | 13 | 12.6 | 10 | -0610 | 6 |
| 13 | 11 | 10.6 | 8 | -0510 | 5 |
| 11 | 9 | 8.6 | 6 | -0410 | 4 |
| 9 | 7 | 6.6 | 4 | -0310 | 3 |
| 7 | 5 | 4.6 | 2 | 51048-0210 | 2 |
| D | C | B | A | ENG. NO. | 機敏 CKTS. |

| | | | | | | |
|---|---------------------------------------|--|----------------------------|-------------------------------|---|------------------------|
| REVISED EC NO. J2012-0577 DRAWN: SATO02 2011/10/31 CHKD: KAKAWA 2011/10/31 APPR: Y010 2011/10/31 | GENERAL TOLERANCES (UNLESS SPECIFIED) | | DIMENSION STYLE MM ONLY | SCALE 5:1 | DESIGN UNITS METRIC | THIRD ANGLE PROJECTION |
| | 10 UNDER | ± 0.2 | DRAWN BY H. SEKINE | DATE '89/9/14 | TITLE 2.0MM PITCH CABLE HOLDER (FOR 4.5MM STRIP LENGTH) | |
| | 10 OVER 30 UNDER | ± 0.25 | CHECKED BY | DATE | APPROVED BY Y010 | |
| | 30 OVER | ± 0.3 | APPROVED BY Y010 | DATE 2011/10/31 | MATERIAL NO. SEE CHART | |
| | ANGULAR ± 3 ° | DRAFT WHERE APPLICABLE MUST REMAIN WITHIN DIMENSIONS | | DOCUMENT NO. SD-51048-**10 | | SHEET NO. 1 OF 1 |
| THIS DRAWING CONTAINS INFORMATION THAT IS PROPRIETARY TO MOLEX INCORPORATED AND SHOULD NOT BE USED WITHOUT WRITTEN PERMISSION | | | | | | |