

Excellent Integrated System Limited

Stocking Distributor

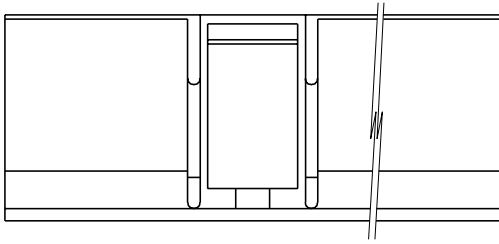
Click to view price, real time Inventory, Delivery & Lifecycle Information:

[Molex Connector Corporation](#)
[0510671200](#)

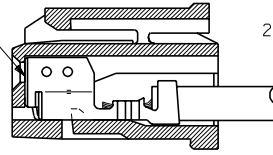
For any questions, you can email us directly:

sales@integrated-circuit.com

DWG. NO. SD-51067-***00
E
D
C
B
A
DIMENSIONS IN METRIC DO NOT SCALE DRAWING



△ターミナル
TERMINAL



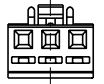
ターミナル装着状態図
TERMINAL ASSEMBLY DRAWING

注記 NOTES

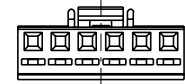
- △適合ターミナル: 50217-****
APPLICABLE TERMINAL : 50217-****
- 2. 嵌合相手: 53258,53265,53259,53266 シリーズ
MATE WITH : 53258,53265,53259,53266 SERIES



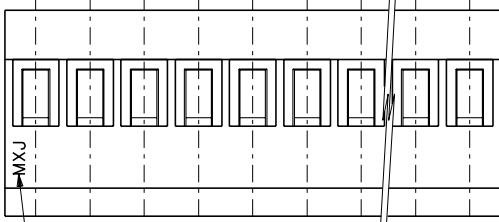
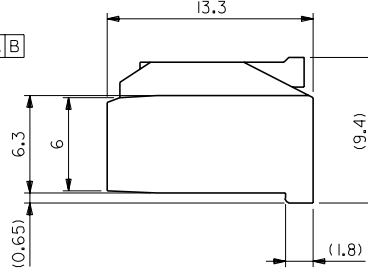
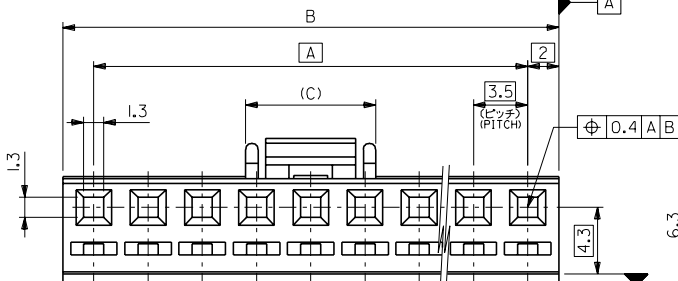
2極に適用
APPLY FOR 2 CKTS.



3極に適用
APPLY FOR 3 CKTS.

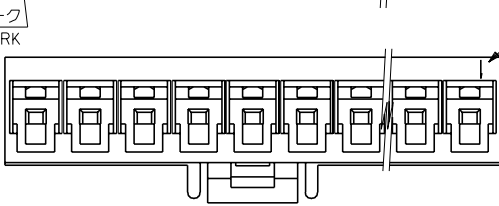


4極以上の偶数極に適用
APPLY FOR EVEN OF 4 CKTS. OVER



トレードマーク
TRADE MARK

回路番号
CIRCUIT NO.



8.4	53.0	49.0	51067-1500	15
49.5	45.5	-1400		14
46.0	42.0	-1300		13
42.5	38.5	-1200		12
39.0	35.0	-1100		11
35.5	31.5	-1000		10
32.0	28.0	-0900		9
28.5	24.5	-0800		8
25.0	21.0	-0700		7
21.5	17.5	-0600		6
18.0	14.0	-0500		5
8.4	14.5	10.5	-0400	4
5.8	11.0	7.0	-0300	3
5.8	7.5	3.5	51067-0200	2
(C)	B	A	ENG. NO.	CKT. 極数

角度 ANGLE	+3°	C	変更 (J40647)	M.S.H.	94/8/18
30以上 OVER	+0.3	B	変更 (J30484)	M.S.H.	93/5/18
10以上 30未満 UNDER	+0.25	A	変更 (J00226)	K.Y.	90-2-28
10未満 UNDER	+0.2	O	新規作成 (J91079)	K.Y.	89-12-19
一般公差 GENERAL TOLERANCES					
記号 LTR	変更内容 REVISION RECORD	DR/CHK	DATE		

材料 MATERIAL	PBT,UL94V-0
仕上げ FINISH	---
適用電線範囲 WIRE RANGE	---
被覆外径 INS. RANGE	---
DRAWN BY 89-12-19	CHK'D BY 94/8/18
K.ASAKAWA	H.HIRAMOTO
APP'D BY 94/8/18	尺度 SCALE
M.FUKUSHIMA	---

molex MOLEX-JAPAN CO.,LTD. 日本モレックス株式会社
REVISE ONLY ON CAD SYSTEM
TITLE 名称
3.5 WIRE TO BOARD CONN. RECEPTACLE HOUSING
DWG. NO. SD-51067-***00
REV C

THIS DRAWING CONTAINS INFORMATION THAT IS PROPRIETARY TO MOLEX(JAPAN) AND SHOULD NOT BE USED WITHOUT WRITTEN PERMISSION
本図面は日本モレックス(株)の所有する情報を含むもので 当社の許可なく複製を禁止する。 EN-01C(032)MXJ-32