

Excellent Integrated System Limited

Stocking Distributor

Click to view price, real time Inventory, Delivery & Lifecycle Information:

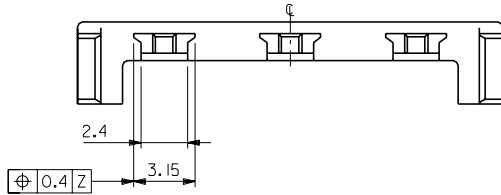
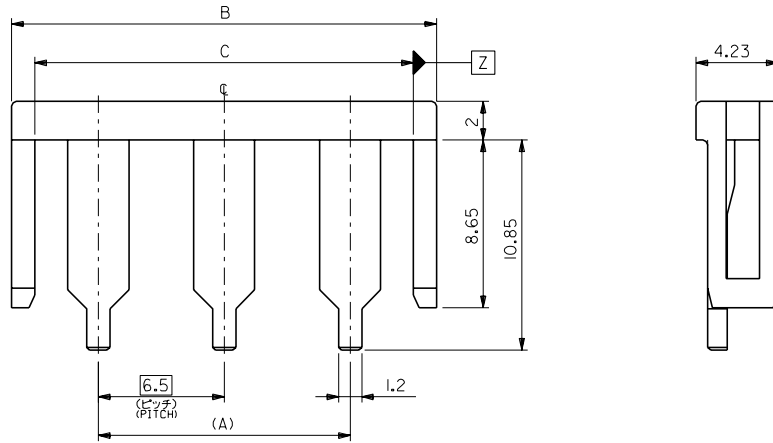
[Molex Connector Corporation](#)

[0511430205](#)

For any questions, you can email us directly:

sales@integrated-circuit.com

DWG. NO. SD-51143-05
DIMENSIONS IN METRIC DO NOT SCALE DRAWING



注記 NOTE

1. 適合ハウジング: 51142 シリーズ
APPLICABLE HOUSING : 51142 SERIES.

| | | | | |
|-------|-------|------|------------|-------------|
| 19.54 | 21.94 | 13.0 | 51143-0305 | 3 |
| 13.04 | 15.44 | 6.5 | 51143-0205 | 2 |
| 6.54 | 8.94 | — | 51143-0105 | 1 |
| C | B | A | ENG. NO. | NO. OF CKT. |

| | | | | | | | |
|-------------------------|-------|---|---------------|----------------------|-------------------|--|--|
| 角度 ANGLE | +3° | | | | 材料 MATERIAL | PBTP,UL94V-0 (色:灰色) (COLOR:GRAY) | MOLEX-JAPAN CO.,LTD. 日本モレックス株式会社 REVISE ONLY ON CAD SYSTEM TITLE 名称 6.5 WIRE TO BOARD CONN. RETAINER DWG. NO. SD-51143-05 REV A |
| 30以上 OVER | +0.3 | | | | 仕上げ FINISH | — | |
| 10以上 OVER 30未満 UNDER | +0.25 | A | 変更 REVISION | (JC60546) | 適用電線範囲 WIRE RANGE | — | |
| 10未満 UNDER | +0.2 | O | 新規作成 RELEASED | (JC60393) | 被覆外径 INS. RANGE | — | |
| 一般公差 GENERAL TOLERANCES | | | 記号 LTR | 変更内容 REVISION RECORD | DRAWN BY 99/02/15 | CHK'D BY 96/02/08 | |
| | | | | | H.HASEGAWA | H.HIRAMOTO | |
| | | | | | APP'D BY 96/02/08 | 尺度 SCALE | 5 : 1 |
| | | | | | DR. M.FUKUSHIMA | | |

THIS DRAWING CONTAINS INFORMATION THAT IS PROPRIETARY TO MOLEX(JAPAN) AND SHOULD NOT BE USED WITHOUT WRITTEN PERMISSION
本図面は日本モレックス(株)の所有する情報を含むもので 当社の許可なく複製を禁止する。
EN-01C(032)MXJ-32