

Excellent Integrated System Limited

Stocking Distributor

Click to view price, real time Inventory, Delivery & Lifecycle Information:

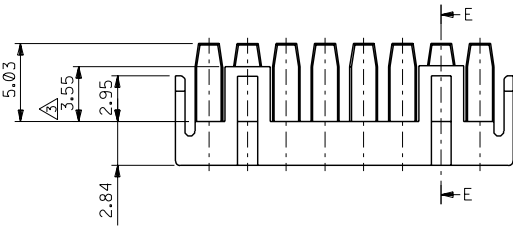
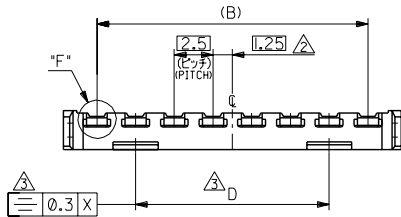
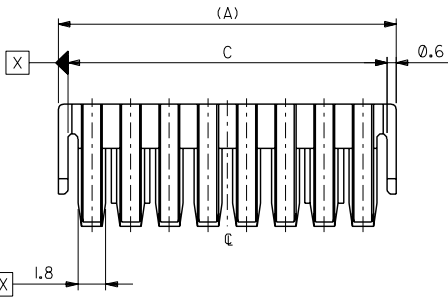
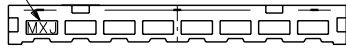
[Molex Connector Corporation](#)
[0511640605](#)

For any questions, you can email us directly:

sales@integrated-circuit.com

DWG. NO. SD-51164-05
E
D
C
B
A
DIMENSIONS IN METRIC DO NOT SCALE DRAWING

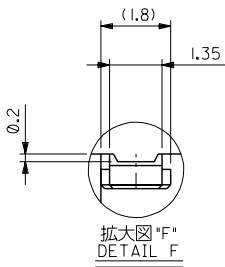
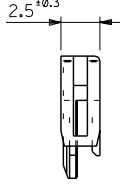
トレードマーク
TRADE MARK



断面 E-E
SECT. E-E
(8極以上)
(OVER 8CKT.)



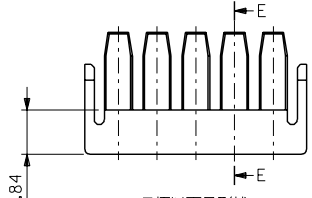
断面 E-E
SECT. E-E
(7極以下)
(UNDER 7CKT.)



拡大図 "F"
DETAIL F

注記 NOTES

- I. 適合ターミナル: 50752-8*00
APPLICABLE TERMINAL: 50752-8*00
- 適合ハウジング: 51163-000
APPLICABLE HOUSING: 51163-000
- △ 偶数極の製品に適用。
APPLY EVEN CIRCUIT PRODUCTS.
- △ 8~15極品に適用。
APPLY 8~15 CKT PRODUCTS.



7極以下品形状
SHAPE OF UNDER 7CKT.

12.5	38.1	35	39.3	51164-1505	15
↑	35.6	32.5	36.8	↑	-1405
	33.1	30	34.3		-1305
	30.6	27.5	31.8		-1205
	28.1	25	29.3		-1105
	25.6	22.5	26.8		-1005
↓	23.1	20	24.3		-0905
	20.6	17.5	21.8		-0805
	18.1	15	19.3		-0705
	15.6	12.5	16.8		-0605
	13.1	10	14.3		-0505
	10.6	7.5	11.8		-0405
	8.1	5	9.3		-0305
	5.6	2.5	6.8	51164-0205	2
D	C	(B)	(A)	ENG. NO.	極数 NO. OF CKT.

角度 ANGLE	+3°				
30 以上 OVER	+0.3				
10 以上 OVER 30 UNDER	+0.25				
10 UNDER	+0.2				
一般公差 GENERAL TOLERANCES	0	新規作成 (JC80469) PROPOSED	5/21/97	97/11/27	
記号 LTR	変更内容 REVISION RECORD	DR.	日付 DATE	尺度 SCALE	

材料 MATERIAL	PBTP, UL94V-0 (灰色 GRA)
仕上げ FINISH	—
適用電線範囲 WIRE RANGE	—
被覆外径 INS. RANGE	—
DRAWN BY	97/11/26 S.AIHARA
CHK'D BY	97/11/27 T.IITO
APP'D BY	97/11/27 M.FUKUSHIMA
尺度	4 : 1

MOLEX-JAPAN CO.,LTD. 日本モレックス株式会社	
REVISE ONLY ON CAD SYSTEM	
TITLE 名称 2.5 WIRE TO BOARD CONN. RETAINER	
DWG. NO. SD-51164-05	REV 0

THIS DRAWING CONTAINS INFORMATION THAT IS PROPRIETARY TO MOLEX/JAPAN AND SHOULD NOT BE USED WITHOUT WRITTEN PERMISSION
本図面は日本モレックス(株)の所有する情報を含むもので当社の許可なく複製を禁止する。
EN-01C(032)MXJ-32