

## Excellent Integrated System Limited

Stocking Distributor

Click to view price, real time Inventory, Delivery & Lifecycle Information:

[Molex Connector Corporation](#)  
[0511641305](#)

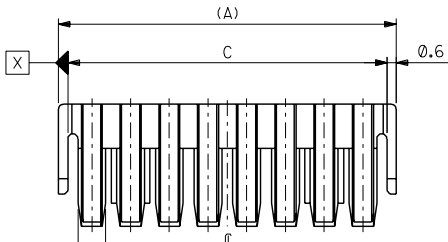
For any questions, you can email us directly:

[sales@integrated-circuit.com](mailto:sales@integrated-circuit.com)

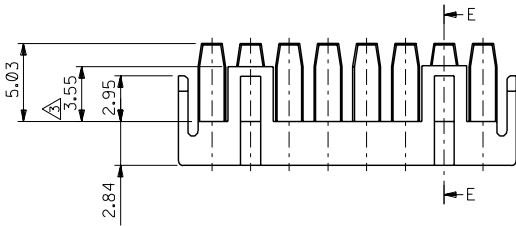
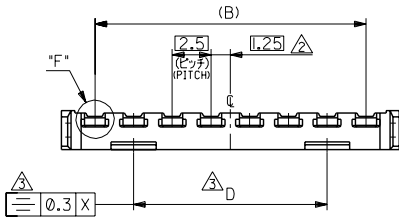
DWG. NO. SD-51164-\*\*-05

.MM DIMENSIONS IN METRIC DO NOT SCALE DRAWING

トレードマーク  
TRADE MARK



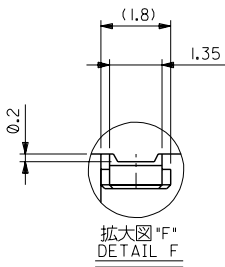
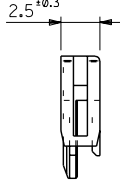
⌀ 0.3 X 1.8



断面 E-E  
SECT. E-E  
(8極以上)  
(OVER 8CKT.)



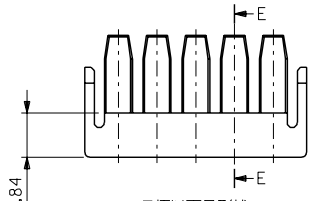
断面 E-E  
SECT. E-E  
(7極以下)  
(UNDER 7CKT.)



拡大図 "F"  
DETAIL F

注記 NOTES

- I. 適合ターミナル: 50752-8\*00  
APPLICABLE TERMINAL: 50752-8\*00
- 適合ハウジング: 51163-\*\*-00  
APPLICABLE HOUSING: 51163-\*\*-00
- △ 偶数極の製品に適用。  
APPLY EVEN CIRCUIT PRODUCTS.
- △ 8~15極品に適用。  
APPLY 8~15 CKT PRODUCTS.



7極以下品形状  
SHAPE OF UNDER 7CKT.

12.5	38.1	35	39.3	51164-1505	15
↑	35.6	32.5	36.8	↑ -1405	14
	33.1	30	34.3	-1305	13
	30.6	27.5	31.8	-1205	12
	28.1	25	29.3	-1105	11
	25.6	22.5	26.8	-1005	10
↓	23.1	20	24.3	-0905	9
	20.6	17.5	21.8	-0805	8
	18.1	15	19.3	-0705	7
	15.6	12.5	16.8	-0605	6
	13.1	10	14.3	-0505	5
	10.6	7.5	11.8	-0405	4
	8.1	5	9.3	-0305	3
	5.6	2.5	6.8	51164-0205	2
D	C	(B)	(A)	ENG. NO.	極数 NO. OF CKT.

角度 ANGLE	+3°				
30 以上 OVER	+0.3				
10 以上 OVER 30 UNDER	+0.25				
10 UNDER	+0.2				
一般公差 GENERAL TOLERANCES	0	新規作成 (JC80469) PROPOSED	5/21/97	97/11/27	
記号 LTR	変更内容 REVISION RECORD	DR.	日付 DATE	尺度 SCALE	

材料 MATERIAL	PBTP, UL94V-0 (灰色 GRA)
仕上げ FINISH	—
適用電線範囲 WIRE RANGE	—
被覆外径 INS. RANGE	—
DRAWN BY	97/11/26 S.AIHARA
CHK'D BY	97/11/27 T.IITO
APP'D BY	97/11/27 M.FUKUSHIMA
尺度 SCALE	4 : 1

MOLEX-JAPAN CO.,LTD. 日本モレックス株式会社	
REVISE ONLY ON CAD SYSTEM	
TITLE 名称 2.5 WIRE TO BOARD CONN. RETAINER	
DWG. NO. SD-51164-**-05	REV 0

THIS DRAWING CONTAINS INFORMATION THAT IS PROPRIETARY TO MOLEX/JAPAN AND SHOULD NOT BE USED WITHOUT WRITTEN PERMISSION  
本図面は日本モレックス(株)の所有する情報を含むもので当社の許可なく複製を禁止する。  
EN-01C(032)MXJ-32