

## Excellent Integrated System Limited

Stocking Distributor

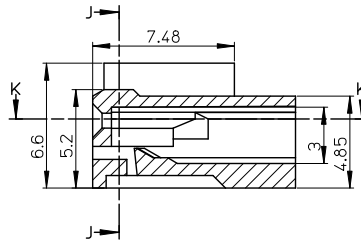
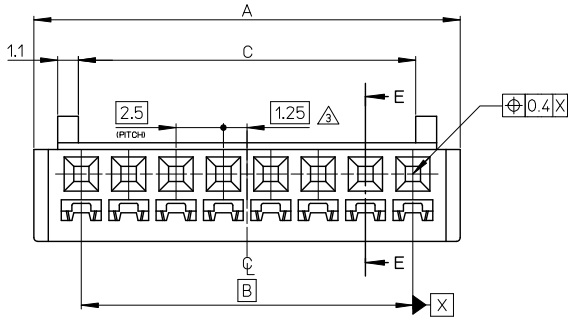
Click to view price, real time Inventory, Delivery & Lifecycle Information:

[Molex Connector Corporation](#)  
[0511910700](#)

For any questions, you can email us directly:

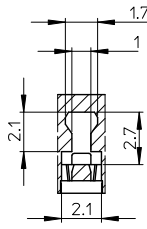
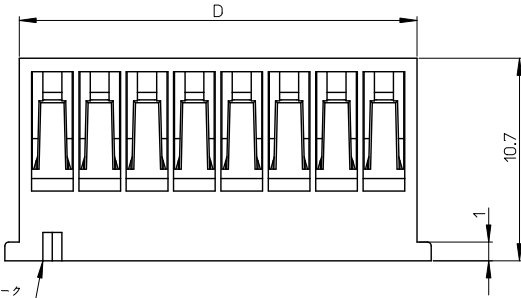
[sales@integrated-circuit.com](mailto:sales@integrated-circuit.com)

10 9 8 7 6 5 4 3 2 1

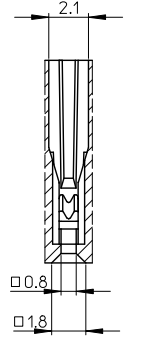


断面 E-E  
SECTION E-E

NOTES: 1. 適合ターミナル : 50802-\*\*\*\*  
APPLICABLE TERMINAL : 50802-\*\*\*\*  
2. 嵌合相手 : 5045,5046,5240シリーズ  
MATE WITH : 5045,5046,5240 SERIES  
△ 偶数極の製品に適用  
APPLY EVEN CIRCUITS PRODUCTS



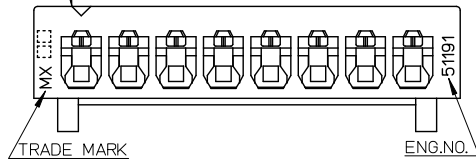
断面 J-J  
SECTION J-J



断面 K-K  
SECTION K-K

41	37.8	37.5	42.5	51191-1600	16
38.5	35.3	35	40	51191-1500	15
36	32.8	32.5	37.5	51191-1400	14
33.5	30.3	30	35	51191-1300	13
31	27.8	27.5	32.5	51191-1200	12
28.5	25.3	25	30	51191-1100	11
26	22.8	22.5	27.5	51191-1000	10
23.5	20.3	20	25	51191-0900	9
21	17.8	17.5	22.5	51191-0800	8
18.5	15.3	15	20	51191-0700	7
16	12.8	12.5	17.5	51191-0600	6
13.5	10.3	10	15	51191-0500	5
11	7.8	7.5	12.5	51191-0400	4
8.5	5.3	5	10	51191-0300	3
6	2.8	2.5	7.5	51191-0200	2
D	C	B	A	MATERIAL NO.	CKT.

回路番号1マーク  
CKT.NO.1MARK



材料 MATERIAL	NYLON66.UL94V-0
仕上げ FINISH	—
適用電線範囲 WIRE RANGE	—
被覆外径 INS. RANGE	—

REVISED EC NO. J2009-1227 DRAWN BY YOSHIDAM 2008/12/19 CHKD: HARUYAMA 2008/12/19 APPR: NUKITA 2009/01/16	GENERAL TOLERANCES (UNLESS SPECIFIED)		DIMENSION STYLE MM ONLY		SCALE 5:1	DESIGN UNITS METRIC	THIRD ANGLE PROJECTION
	10 UNDER	± 0.2	DRAWN BY S. MATSUZAKI	DATE 1998/04/09	2.5 WIRE TO BOARD CONN. HOUSING		
	10 OVER 30 UNDER	± 0.25	CHECKED BY S. KUNISHI	DATE 1998/04/10			
	30 OVER	± 0.3	APPROVED BY M. FUKUSHIMA	DATE 1998/04/10			
ANGULAR	± --- °	MATERIAL NO.	DOCUMENT NO.				
DRAFT WHERE APPLICABLE MUST REMAIN WITHIN DIMENSIONS		SEE TABLE		MOLEX INCORPORATED			SHEET NO. 1 OF 1
THIS DRAWING CONTAINS INFORMATION THAT IS PROPRIETARY TO MOLEX INCORPORATED AND SHOULD NOT BE USED WITHOUT WRITTEN PERMISSION				SD-51191-004			EN-02JA(021)