

Excellent Integrated System Limited

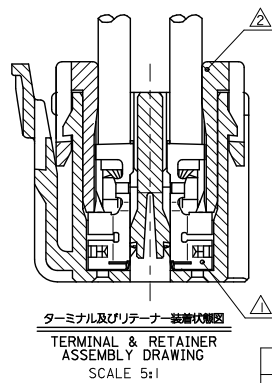
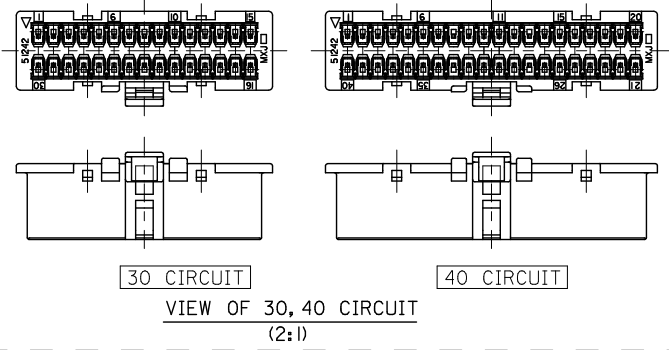
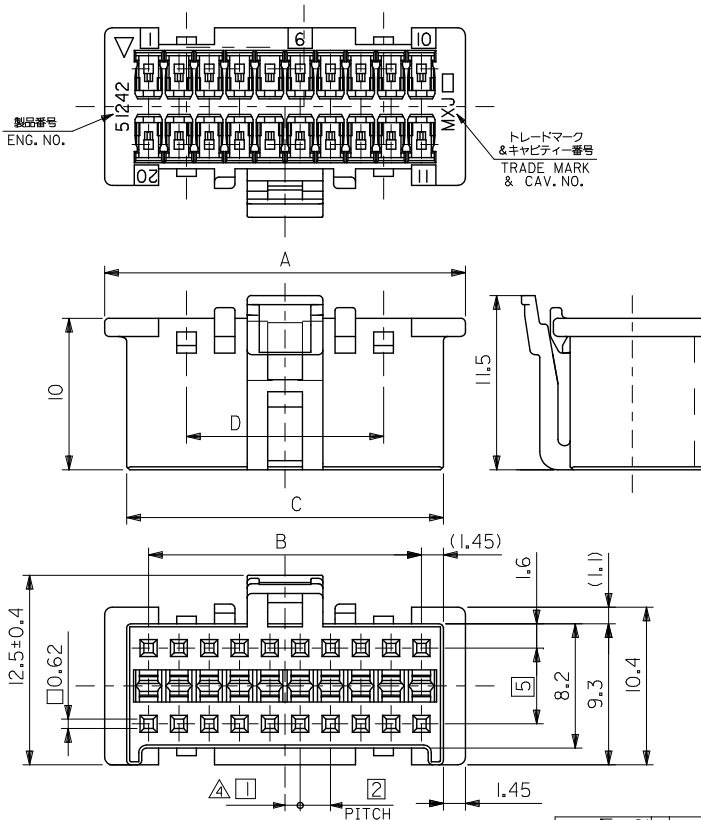
Stocking Distributor

Click to view price, real time Inventory, Delivery & Lifecycle Information:

[Molex Connector Corporation](#)
[0512423000](#)

For any questions, you can email us directly:
sales@integrated-circuit.com

10 9 8 7 6 5 4 3 2 1



注記
NOTES

- △ 適合ターミナル : 56134シリーズ
APPLICABLE TERMINAL : 56134 SERIES
- △ 適合リテーナー : 56767シリーズ
APPLICABLE RETAINER : 55767 SERIES
- 3. 嵌合相手 : 56763シリーズ
MATE WITH : 55763 SERIES
(全極数/2) = 偶数の場合に適用
APPLY FOR (CIRCUIT/2)=EVEN
- △ 製品番号
MATERIAL NO.
51242-***0*

極数 CIRCUIT SIZE	色 COLOR	ナチュラル(白) NATURAL(WHITE)	0
		赤 RED	2

25	40.9	38	43.8	51242-400*	40
15	30.9	28	33.8	51242-300*	30
13	20.9	18	23.8	51242-200*	20
D	C	B	A	△ MATERIAL NO. CKT.	

部品 PART	材質 MATERIAL
ハウジング HOUSING	ポリアミド (PA66)、ガラス入り、 GLASS FILLED 66 NYLON, UL94V-0、色:表参照 COLOR: SEE CHART

REVISED EC NO. J2011-0908 DRAWN BY NITO CHECKED BY KASAKAWA APPROVED BY TYAMAGUCHI MATERIAL NO. SEE CHART SIZE A3	2011/01/11 2011/01/12 DESCRIPTION CHIKO APPR:NIKIITA	GENERAL TOLERANCES (UNLESS SPECIFIED)		DIMENSION STYLE MM ONLY		SCALE 4:1	DESIGN UNITS METRIC	THIRD ANGLE PROJECTION	
		10 UNDER	± 0.2	DRAWN BY NITO	DATE '01/04/02	TITLE 2.0 DUAL W/B CONN RCPT HSG			
		10 OVER 30 UNDER	± 0.25	CHECKED BY KASAKAWA	DATE '01/08/02	MOLEX INCORPORATED			
		30 OVER	± 0.3	APPROVED BY TYAMAGUCHI	DATE '01/08/02	DOCUMENT NO. SD-51242-002			
ANGULAR ±3°		DRAFT WHERE APPLICABLE MUST REMAIN WITHIN DIMENSIONS		THIS DRAWING CONTAINS INFORMATION THAT IS PROPRIETARY TO MOLEX INCORPORATED AND SHOULD NOT BE USED WITHOUT WRITTEN PERMISSION		SHEET NO. 1 OF 1			