

Excellent Integrated System Limited

Stocking Distributor

Click to view price, real time Inventory, Delivery & Lifecycle Information:

[Molex Connector Corporation](#)
[0532611771](#)

For any questions, you can email us directly:
sales@integrated-circuit.com

10 9 8 7 6 5 4 3 2 1

F

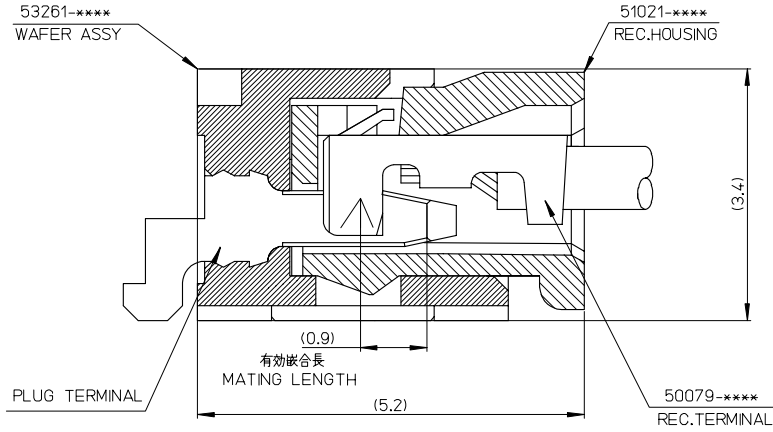
E

D

C

B

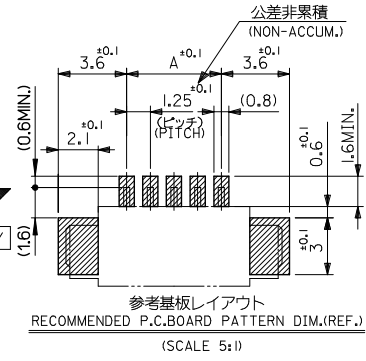
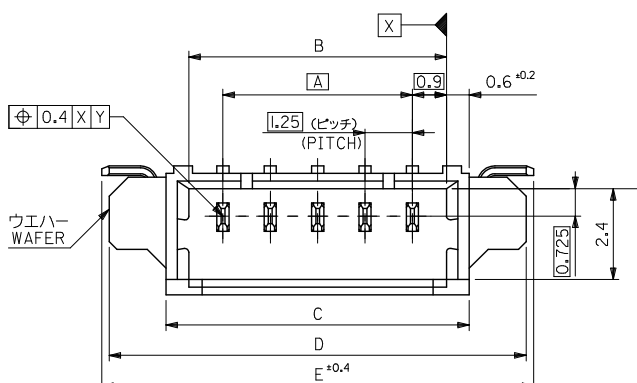
A



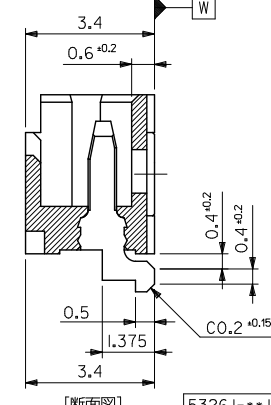
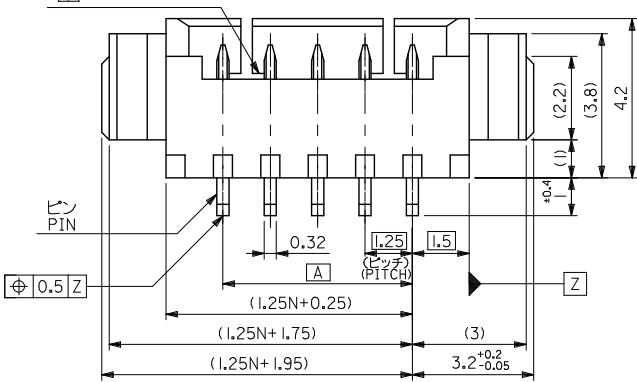
53261-****	WAFER ASSY	MODEL NO./MATERIAL NO.
50079-****	TERMINAL	
51021-****	HOUSING	

RELEASED EC NO: J2006-2426 DRAWN: A0YAGI CHECKED: MAEDA APPR: NIKITA 2006/02/02 2006/02/03 2006/02/07	GENERAL TOLERANCES (UNLESS SPECIFIED)		DIMENSION STYLE MM ONLY		SCALE ---	DESIGN UNITS METRIC	THIRD ANGLE PROJECTION
	10 UNDER	±---	DRAWN BY Y. A0YAGI	DATE 2006/01/30	TITLE 1.25 W-T0-B CONN. 51021,53261 MATING CROSS SECTION		
	10 OVER 30 UNDER	±---	CHECKED BY Y. MAEDA	DATE 2006/01/30	MOLEX INCORPORATED		
	30 OVER	±---	APPROVED BY N. UKITA	DATE 2006/01/30	MATERIAL NO. SEE CHART DOCUMENT NO. SD-51021-002		
0	ANGULAR	±---°	DRAFT WHERE APPLICABLE MUST REMAIN WITHIN DIMENSIONS		SHEET NO. 1 OF 1		

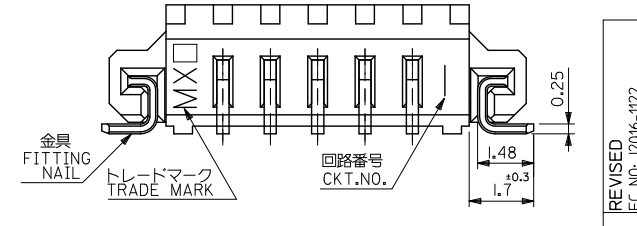
10 9 8 7 6 5 4 3 2 1



- 注記 NOTES**
1. 嵌合相手: 51021 シリウス
MATES WITH: 51021 SERIES
 2. 材質 MATERIAL
ワエハー: NYLON46, UL94V-0
ピン: リン青銅
PIN: PHOS-BRO
銅メッキ 1.0 マイクロメートル以上
: TIN 1.0 MICROMETER MINIMUM
ニッケル下地 1.0 マイクロメートル以上
: NICKEL UNDER PLATING 1.0 MICROMETER MINIMUM
金具: リン青銅
FITTING NAIL: PHOS-BRO
銅メッキ 1.0 マイクロメートル以上
: TIN 1.0 MICROMETER MINIMUM
ニッケル下地 1.0 マイクロメートル以上
: NICKEL UNDER PLATING 1.0 MICROMETER MINIMUM
 3. ロック窓は2, 3個は1箇所, 4個以上は2箇所とする。
LOCKING WINDOW: ONE PLACE FOR 2 AND 3 CKT. AND TWO PLACES FOR MORE THAN 3 CKT.
 4. ソルダーテール部のスリ量及び金具(補強板)のスリ量は基準面 [W] に対し、上方向 0.05MAX.、下方向に 0.1 MAX. とする。
OFFSET BETWEEN BASIS PLANE [W] TO SOLDER TAIL BOTTOM AND FITTING NAIL BOTTOM:
UPPER SIDE: 0.05MAX.
LOWER SIDE: 0.1MAX.
 5. 本製品は 53261-**-10 の鉛フリー品である。
THIS PRODUCT IS LEAD FREE OF 53261-**-10
 6. ELV 及び RoHS 適合品
ELV AND RoHS COMPLIANT.
 7. ソルダーテール及び金具の平直度は 0.1 以下。
SOLDER TAIL & FITTING NAIL COPLANARITY TO BE 0.1 MAX.

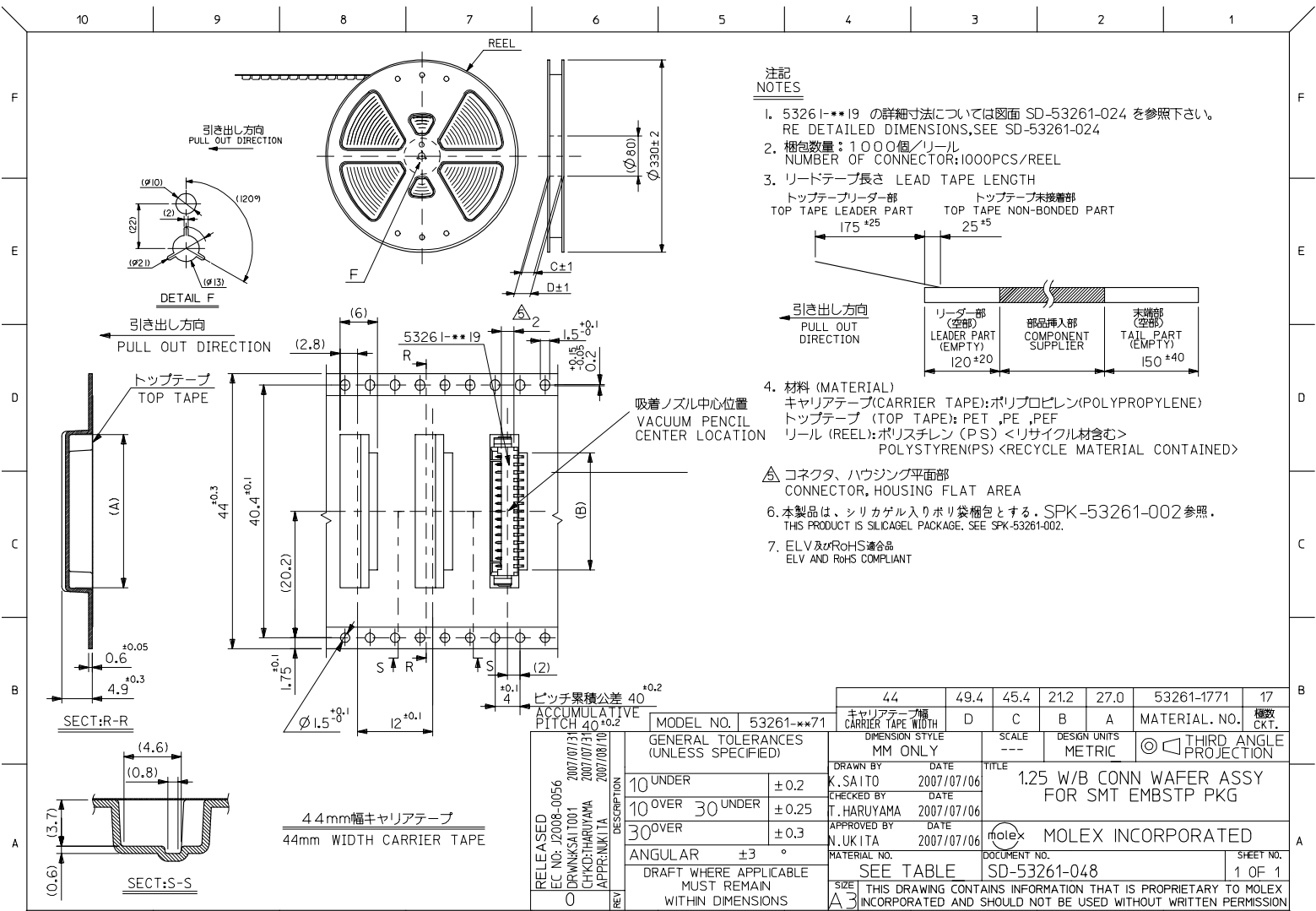


26.4	26	23	21.8	20	53261-1771	53261-1719	17
23.9	23.5	20.5	19.3	17.5	-1571	-1519	15
22.65	22.25	19.25	18.05	16.25	-1471	-1419	14
21.4	21	18	16.8	15	-1371	-1319	13
20.15	19.75	16.75	15.55	13.75	-1271	-1219	12
18.9	18.5	15.5	14.3	12.5	-1171	-1119	11
17.65	17.25	14.25	13.05	11.25	-1071	-1019	10
16.4	16	13	11.8	10	-0971	-0919	9
15.15	14.75	11.75	10.55	8.75	-0871	-0819	8
13.9	13.5	10.5	9.3	7.5	-0771	-0719	7
12.65	12.25	9.25	8.05	6.25	-0671	-0619	6
11.4	11	8	6.8	5	-0571	-0519	5
10.15	9.75	6.75	5.55	3.75	-0471	-0419	4
8.9	8.5	5.5	4.3	2.5	-0371	-0319	3
7.65	7.25	4.25	3.05	1.25	53261-0271	53261-0219	2



REVISED	EC NO. J2016-1122	2016/04/26	DRW:GHE31	2016/05/06	CHKD:SKUYAMA	2016/05/06	APPR:IKANEKO	2016/05/06	
GENERAL TOLERANCES (UNLESS SPECIFIED)		DIMENSION STYLE		SCALE		DESIGN UNITS		THIRD ANGLE PROJECTION	
0.25 UNDER	UNDER	±0.03	MM ONLY		10:1		METRIC		◎
0.25 OVER	0.5 UNDER	±0.05	DRAWN BY		DATE		TITLE		
0.5 OVER	1.0 UNDER	±0.1	HSI MABU		04/02/06		1.25 WIRE TO BOARD WAFER ASSY FOR SMT		
1.0 OVER	10 UNDER	±0.2	CHECKED BY		DATE				
10 OVER	30 UNDER	±0.25	KTOJO		04/02/06				
30 OVER		±0.3	APPROVED BY		DATE				
ANGULAR	±3°		MSASAO		04/02/06				
DRAFT WHERE APPLICABLE MUST REMAIN WITHIN DIMENSIONS		SIZE		DOCUMENT NO.		SHEET NO.			
		A3		SEE CHART		SD-53261-024		1 OF 1	
THIS DRAWING CONTAINS INFORMATION THAT IS PROPRIETARY TO MOLEX ELECTRONIC TECHNOLOGIES, LLC AND SHOULD NOT BE USED WITHOUT WRITTEN PERMISSION									

9 8 7 6 5 4 3 2 1



**注記
NOTES**

- 53261-**19 の詳細寸法については図面 SD-53261-024 を参照下さい。
RE DETAILED DIMENSIONS, SEE SD-53261-024
- 梱包数量: 1000個/リール
NUMBER OF CONNECTOR: 1000PCS/REEL
- リードテープ長さ LEAD TAPE LENGTH
トップテープリーダー部 TOP TAPE LEADER PART 175⁺²⁵
トップテープ未接着部 TOP TAPE NON-BONDED PART 25⁺⁵
- 材料 (MATERIAL)
キャリアテープ (CARRIER TAPE): ポリプロピレン (POLYPROPYLENE)
トップテープ (TOP TAPE): PET, PE, PEF
リール (REEL): ポリスチレン (PS) <リサイクル材含む>
POLYSTYRENE (PS) <RECYCLE MATERIAL CONTAINED>
- コネクタ、ハウジング平面部
CONNECTOR, HOUSING FLAT AREA
- 本製品は、シリカゲル入りポリ袋梱包とする。SPK-53261-002 参照。
THIS PRODUCT IS SILICA GEL PACKAGE. SEE SPK-53261-002.
- ELV 及び RoHS 適合品
ELV AND RoHS COMPLIANT