

Excellent Integrated System Limited

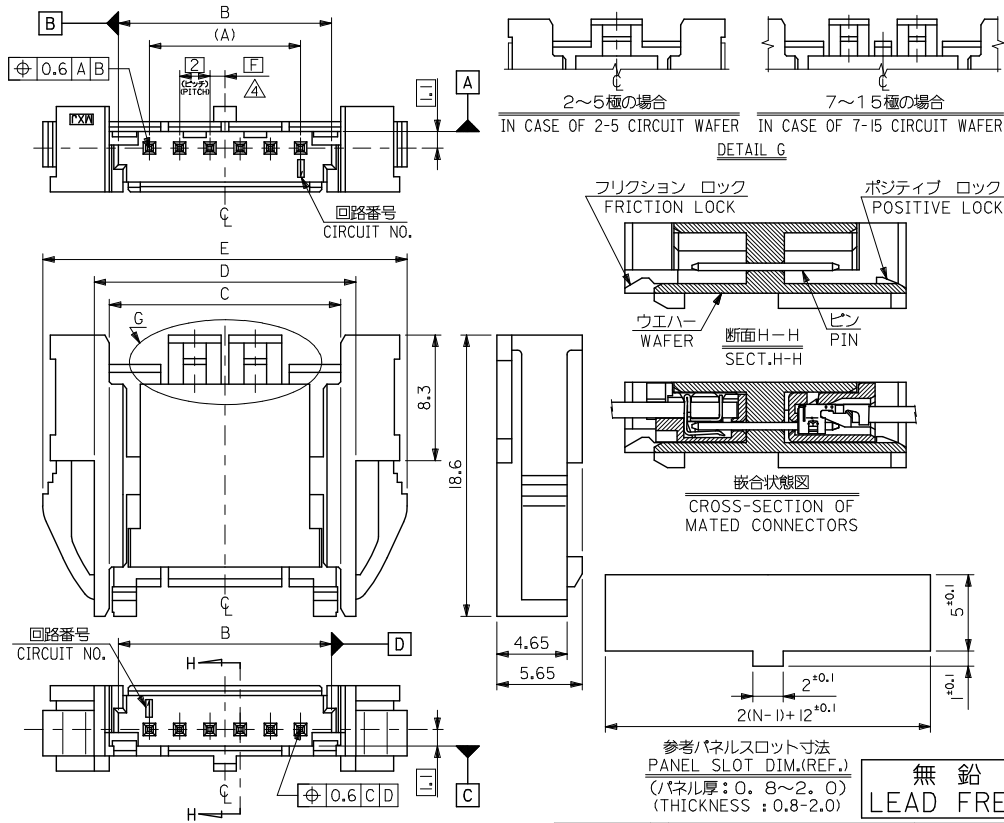
Stocking Distributor

Click to view price, real time Inventory, Delivery & Lifecycle Information:

[Molex Connector Corporation](#)
[0533581040](#)

For any questions, you can email us directly:
sales@integrated-circuit.com

10 9 8 7 6 5 4 3 2 1



注記
NOTES

- 材料 MATERIAL
ワエハー: PBT,UL94V-0
WAFER: PBT,UL94V-0
ピン: 黄銅, スズメッキ (0.5)
PIN: BRASS, TIN PLATED (0.5 SQUARE)
- 適合圧着ハウジング: 51090-***00
MATING CRIMP RECEPTACLE HOUSING: 51090-***00
- 適合圧接ハウジング: 52484-***1*
MATING 1DT RECEPTACLE HOUSING: 52484-***1*
- △ B寸法の中心から、隣接するピンの中心までの位置を示す。
THIS DIMENSION SHOWS SPACING BETWEEN CENTER OF PIN AND CENTER OF B DIMENSION.
- 本図は、6種を示す。
- 6 CIRCUIT VERSION IS SHOWN IN THIS DRAWING.
ハウジングは、パネル打抜き側から挿入すること。
INSERT HOUSING FROM PUNCH SIDE OF PANEL.
- 色
53358-***40: 自然色 (WHITE)
53358-***42: 赤色 (RED)
53358-***43: 黄色 (YELLOW)
53358-***44: 青色 (BLUE)

| | | | | | | | |
|---|------|------|------|------|----|------------|------|
| 2 | 42.1 | 35.3 | 33.3 | 32.1 | 28 | 53358-154* | 15 |
| 1 | 40.1 | 33.3 | 31.3 | 30.1 | 26 | -144* | 14 |
| 2 | 38.1 | 31.3 | 29.3 | 28.1 | 24 | -134* | 13 |
| 1 | 36.1 | 29.3 | 27.3 | 26.1 | 22 | -124* | 12 |
| 2 | 34.1 | 27.3 | 25.3 | 24.1 | 20 | -114* | 11 |
| 1 | 32.1 | 25.3 | 23.3 | 22.1 | 18 | -104* | 10 |
| 2 | 30.1 | 23.3 | 21.3 | 20.1 | 16 | -094* | 9 |
| 1 | 28.1 | 21.3 | 19.3 | 18.1 | 14 | -084* | 8 |
| 2 | 26.1 | 19.3 | 17.3 | 16.1 | 12 | -074* | 7 |
| 1 | 24.1 | 17.3 | 15.3 | 14.1 | 10 | -064* | 6 |
| 2 | 22.1 | 15.3 | 13.3 | 12.1 | 8 | -054* | 5 |
| 1 | 20.1 | 13.3 | 11.3 | 10.1 | 6 | -044* | 4 |
| 2 | 18.1 | 11.3 | 9.3 | 8.1 | 4 | -034* | 3 |
| 1 | 16.1 | 9.3 | 7.3 | 6.1 | 2 | 53358-024* | 2 |
| F | E | D | C | B | A | ENG. NO. | CKT. |

参考パネルスロット寸法
PANEL SLOT DIM.(REF.)
(パネル厚: 0.8~2.0)
(THICKNESS: 0.8-2.0)

無鉛
LEAD FREE

| | | | | | | | |
|--|--|--------------|----------------------------|--|---|------------------------|---------------------------|
| REVISED EC NO. J2015-0419 DRAWN BY DRINKAWATSUYAMA CHKD BY CHIKOKASAKAWA APPR. BY NAKITA DESCRIPTION 2014/09/26 2014/09/29 2014/11/11 | GENERAL TOLERANCES (UNLESS SPECIFIED) | | DIMENSION STYLE MM ONLY | | SCALE --- | DESIGN UNITS METRIC | THIRD ANGLE PROJECTION |
| | 10 UNDER | ± 0.2 | DRAWN BY SSHIBATA | DATE 2012/11/21 | TITLE 2.0 WIRE TO WIRE CONN. PANEL MOUNT WAFER ASSY | | |
| | 10 OVER 30 UNDER | ± 0.25 | CHECKED BY JMIZAWA | DATE 2012/11/21 | DOCUMENT NO. SD-53358-001 | | |
| | 30 OVER | ± 0.3 | APPROVED BY YOITO | DATE 2012/11/21 | | | |
| ANGULAR ± 3 ° | | MATERIAL NO. | | SHEET NO. 1 OF 1 | | SEE CHART | |
| DRAFT WHERE APPLICABLE MUST REMAIN WITHIN DIMENSIONS | | SIZE A | | THIS DRAWING CONTAINS INFORMATION THAT IS PROPRIETARY TO MOLEX INCORPORATED AND SHOULD NOT BE USED WITHOUT WRITTEN PERMISSION | | | |

9 8 7 6 5 4 3 2 1