

Excellent Integrated System Limited

Stocking Distributor

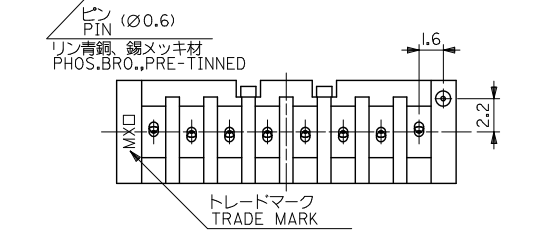
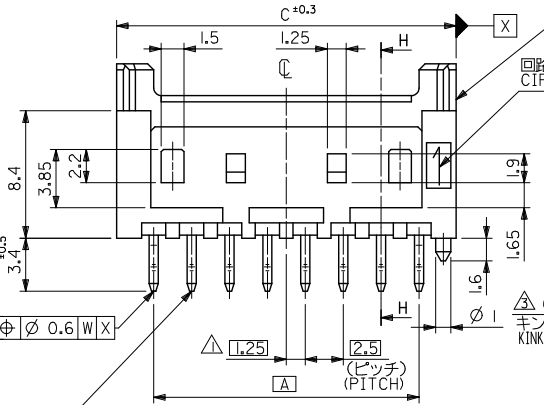
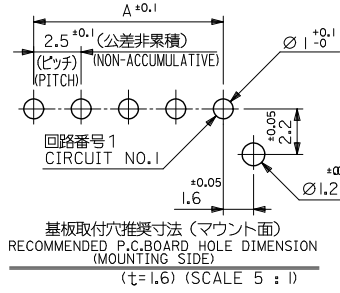
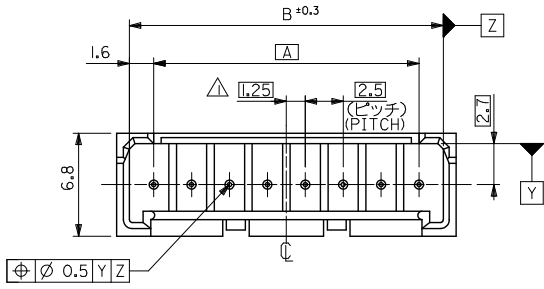
Click to view price, real time Inventory, Delivery & Lifecycle Information:

[Molex Connector Corporation](#)
[0533750810](#)

For any questions, you can email us directly:

sales@integrated-circuit.com

10 9 8 7 6 5 4 3 2 1



注記
NOTES

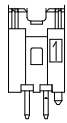
- △ 偶数極品に適用。
APPLIES ONLY TO EVEN NO. CKT. SIZES.
- 2. 嵌合相手: 51103 シリーズ
MATES WITH : 51103 SERIES.
- △ 3極以上のキック形状は両サイドが A、その他の極はすべて B 形状とする。
KINK FORM
MORE THAN 2 CIRCUIT:
PINS AT BOTH ENDS ARE KINK FORMED TO A, THE OTHER PINS ARE KINK FORMED TO B.
- 4. 製品番号の下1桁は色を表します。
LAST DIGIT OF PART NUMBER INDICATES COLOR.
0: 白 WHITE 1: 黒 BLACK 2: 赤 RED
3: 黄 YELLOW 4: 青 BLUE
- 5. 材料 ウエハー: PBTP(15%G.F.)、UL94V-0
WEFER
ピン: リン青銅 錫メッキ 1.0µm以上
下地銅メッキ 0.5µm以上
PIN: PHOSPHOR BRONZE,
TIN 1.0 micrometer MINIMUM
OVER COPPER 0.5 micrometer MINIMUM
PLATING.

39.9	38.2	35	53375-151*	15
37.4	35.7	32.5	-141*	14
34.9	33.2	30	-131*	13
32.4	30.7	27.5	-121*	12
29.9	28.2	25	-111*	11
27.4	25.7	22.5	-101*	10
24.9	23.2	20	-091*	9
22.4	20.7	17.5	-081*	8
19.9	18.2	15	-071*	7
17.4	15.7	12.5	-061*	6
14.9	13.2	10	-051*	5
12.4	10.7	7.5	-041*	4
9.9	8.2	5	-031*	3
7.4	5.7	2.5	53375-021*	2

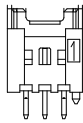
REVISED EC NO. J2013-1080 DRAWN BY CHKD BY APPR. Y010 H	2013/04/01	2013/04/01	2013/04/01	DESCRIPTION	GENERAL TOLERANCES (UNLESS SPECIFIED)	DIMENSION STYLE MM ONLY	SCALE 4:1	DESIGN UNITS METRIC	THIRD ANGLE PROJECTION	TITLE 2.5 W/B CONN WAFER ASSY WITH KINK -LEAD FREE- molex DOCUMENT NO. SD-53375-001 SHEET NO. 1 OF 2
	10 UNDER	±0.2	DRAWN BY K. TOJO		DATE 1992/05/06					
	10 OVER 30 UNDER	±0.25	CHECKED BY H. HIRAMOTO		DATE 1994/03/08					
	30 OVER	±0.3	APPROVED BY M. FUKUSUMA		DATE 1994/03/08					
ANGULAR ±3°					DRAFT WHERE APPLICABLE MUST REMAIN WITHIN DIMENSIONS	MATERIAL NO.	SEE TABLE	THIS DRAWING CONTAINS INFORMATION THAT IS PROPRIETARY TO MOLEX INCORPORATED AND SHOULD NOT BE USED WITHOUT WRITTEN PERMISSION		

9 8 7 6 5 4 3 2 1

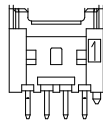
10 9 8 7 6 5 4 3 2 1



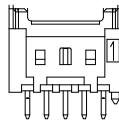
2極
2 CKT.



3極
3 CKT.



4極
4 CKT.



5極
5 CKT.

ロック形状図
LOCK CONFIGURATION

53375-1514	53375-1513		53375-1510	15
			53375-1410	14
			53375-1310	13
53375-1214	53375-1213		53375-1210	12
			53375-1110	11
			53375-1010	10
			53375-0910	9
53375-0814		53375-0812	53375-0810	8
		53375-0712	53375-0710	7
53375-0614	53375-0613	53375-0612	53375-0610	6
		53375-0512	53375-0510	5
			53375-0410	4
			53375-0310	3
53375-0214	53375-0213	53375-0212	53375-0210	2
53375-**14 COLOR : BLUE	53375-**13 COLOR : YELLOW	53375-**12 COLOR : RED	53375**10 COLOR : WHITE	CKT.

TRAY PACKAGE ORDER No.

MODEL NO. 53375-**1*

REVISED EC NO. J2013-1080 DRAWN BY CHIKIDAKAWA APPR. YOTO 2013/04/01 2013/04/01 2013/04/01	GENERAL TOLERANCES (UNLESS SPECIFIED)		DIMENSION STYLE MM ONLY	SCALE 4:1	DESIGN UNITS METRIC	THIRD ANGLE PROJECTION
	10 UNDER	± 0.2	DRAWN BY K. TOJO	DATE 1992/05/06	TITLE 2.5 W/B CONN WAFER ASSY WITH KINK -LEAD FREE-	
	10 OVER 30 UNDER	± 0.25	CHECKED BY H. HIRAMOTO	DATE 1994/03/08		
	30 OVER	± 0.3	APPROVED BY M. FUKUSUMA	DATE 1994/03/08		
ANGULAR ± 3 °		MATERIAL NO.		DOCUMENT NO.	SHEET NO.	
DRAFT WHERE APPLICABLE MUST REMAIN WITHIN DIMENSIONS		SEE TABLE		SD-53375-001		2 OF 2
SIZE A3 THIS DRAWING CONTAINS INFORMATION THAT IS PROPRIETARY TO MOLEX INCORPORATED AND SHOULD NOT BE USED WITHOUT WRITTEN PERMISSION						

9 8 7 6 5 4 3 2 1