



Excellent Integrated System Limited

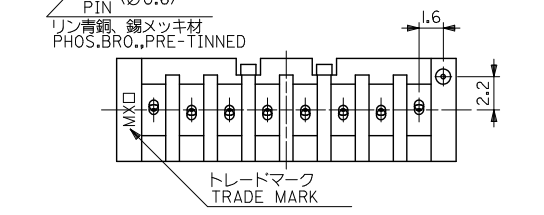
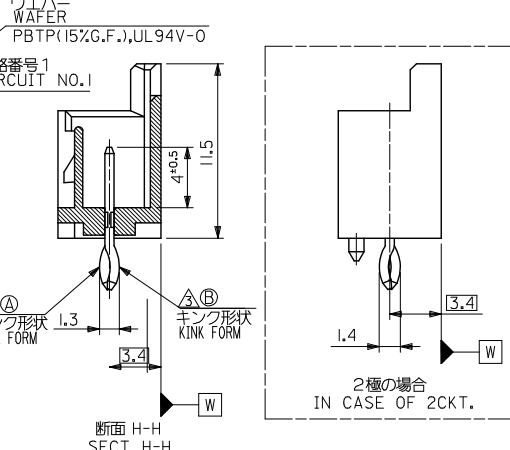
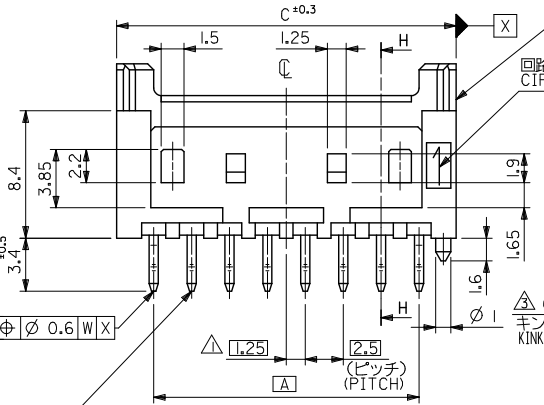
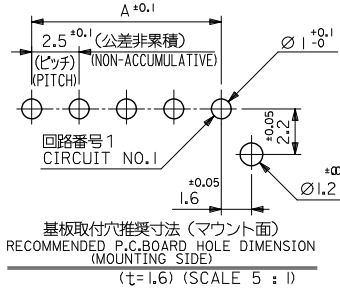
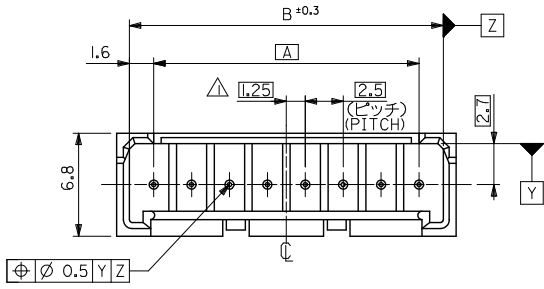
Stocking Distributor

Click to view price, real time Inventory, Delivery & Lifecycle Information:

[Molex Connector Corporation](#)
[0533751110](#)

For any questions, you can email us directly:
sales@integrated-circuit.com

10 9 8 7 6 5 4 3 2 1



注記 NOTES

△ 偶数極品に適用。
APPLIES ONLY TO EVEN NO. CKT. SIZES.

2. 嵌合相手: 51103 シリーズ
MATES WITH: 51103 SERIES.

△ 3極以上のキック形状は両サイドが(A)、その他の極はすべて(B)形状とする。
KINK FORM MORE THAN 2 CIRCUIT: PINS AT BOTH ENDS ARE KINK FORMED TO (A), THE OTHER PINS ARE KINK FORMED TO (B).

4. 製品番号の下1桁は色を表します。
LAST DIGIT OF PART NUMBER INDICATES COLOR.
0: 白 WHITE 1: 黒 BLACK 2: 赤 RED
3: 黄 YELLOW 4: 青 BLUE

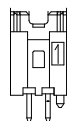
5. 材料 ウエハー: PBTP(15%G.F.), UL94V-0
WEFER
ピン: リン青銅 錫メッキ 1.0μm以上
下地銅メッキ 0.5μm以上
PIN: PHOSPHOR BRONZE, TIN 1.0 MICROMETER MINIMUM OVER COPPER 0.5 MICROMETER MINIMUM PLATING.

39.9	38.2	35	53375-151*	15
37.4	35.7	32.5	-141*	14
34.9	33.2	30	-131*	13
32.4	30.7	27.5	-121*	12
29.9	28.2	25	-111*	11
27.4	25.7	22.5	-101*	10
24.9	23.2	20	-091*	9
22.4	20.7	17.5	-081*	8
19.9	18.2	15	-071*	7
17.4	15.7	12.5	-061*	6
14.9	13.2	10	-051*	5
12.4	10.7	7.5	-041*	4
9.9	8.2	5	-031*	3
7.4	5.7	2.5	53375-021*	2

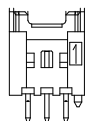
C	B	A	POLY BAG PACKAGE ORDER NO.	極数 NO. OF CKTS.
			MODEL NO. 53375-***1*	

REVISED EC NO. J2013-1080 DRAWN BY CHKD BY APPR. Y. ITO H	2013/04/01	2013/04/01	2013/04/01	DESCRIPTION	GENERAL TOLERANCES (UNLESS SPECIFIED)		DIMENSION STYLE		SCALE	DESIGN UNITS	TITLE	DOCUMENT NO.	SHEET NO.									
								MM ONLY						4:1	METRIC	2.5 W/B CONN WAFER ASSY WITH KINK -LEAD FREE-	SD-53375-001	1 OF 2				
						10 UNDER	±0.2	DRAWN BY											DATE	SEE TABLE	THIRD ANGLE PROJECTION	
						10 OVER 30 UNDER	±0.25	K. TOJO											1992/05/06			THIS DRAWING CONTAINS INFORMATION THAT IS PROPRIETARY TO MOLEX INCORPORATED AND SHOULD NOT BE USED WITHOUT WRITTEN PERMISSION
						30 OVER	±0.3	H. HIRAMOTO											1994/03/08			
				ANGULAR	±3°	M. FUKUSUMA	1994/03/08															

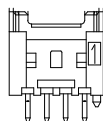
10 9 8 7 6 5 4 3 2 1



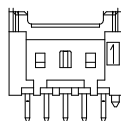
2極
2 CKT.



3極
3 CKT.



4極
4 CKT.



5極
5 CKT.

ロック形状図
LOCK CONFIGURATION

53375-1514	53375-1513		53375-1510	15
			53375-1410	14
			53375-1310	13
53375-1214	53375-1213		53375-1210	12
			53375-1110	11
			53375-1010	10
			53375-0910	9
53375-0814		53375-0812	53375-0810	8
		53375-0712	53375-0710	7
53375-0614	53375-0613	53375-0612	53375-0610	6
		53375-0512	53375-0510	5
			53375-0410	4
			53375-0310	3
53375-0214	53375-0213	53375-0212	53375-0210	2
53375-**14 COLOR : BLUE	53375-**13 COLOR : YELLOW	53375-**12 COLOR : RED	53375**10 COLOR : WHITE	CKT.

TRAY PACKAGE ORDER No.

MODEL NO. 53375-**1*

REVISED EC NO. J2013-1080 DRAWN BY 2013/04/01 CHIKIDAKAKAWA APPR. YOTO 2013/04/01 REV H	GENERAL TOLERANCES (UNLESS SPECIFIED)		DIMENSION STYLE	SCALE	DESIGN UNITS	THIRD ANGLE PROJECTION
			MM ONLY	4:1	METRIC	
	10 UNDER	± 0.2	DRAWN BY	DATE	TITLE	
	10 OVER 30 UNDER	± 0.25	K. TOJO	1992/05/06	2.5 W/B CONN WAFER ASSY WITH KINK -LEAD FREE-	
30 OVER	± 0.3	CHECKED BY	DATE	molex		
ANGULAR	± 3 °	H. HIRAMOTO	1994/03/08	DOCUMENT NO.		
DRAFT WHERE APPLICABLE MUST REMAIN WITHIN DIMENSIONS		APPROVED BY	DATE	SD-53375-001		
		M. FUKUSUMA	1994/03/08	SHEET NO.		
		SEE TABLE		2 OF 2		
		THIS DRAWING CONTAINS INFORMATION THAT IS PROPRIETARY TO MOLEX INCORPORATED AND SHOULD NOT BE USED WITHOUT WRITTEN PERMISSION				

9 8 7 6 5 4 3 2