

Excellent Integrated System Limited

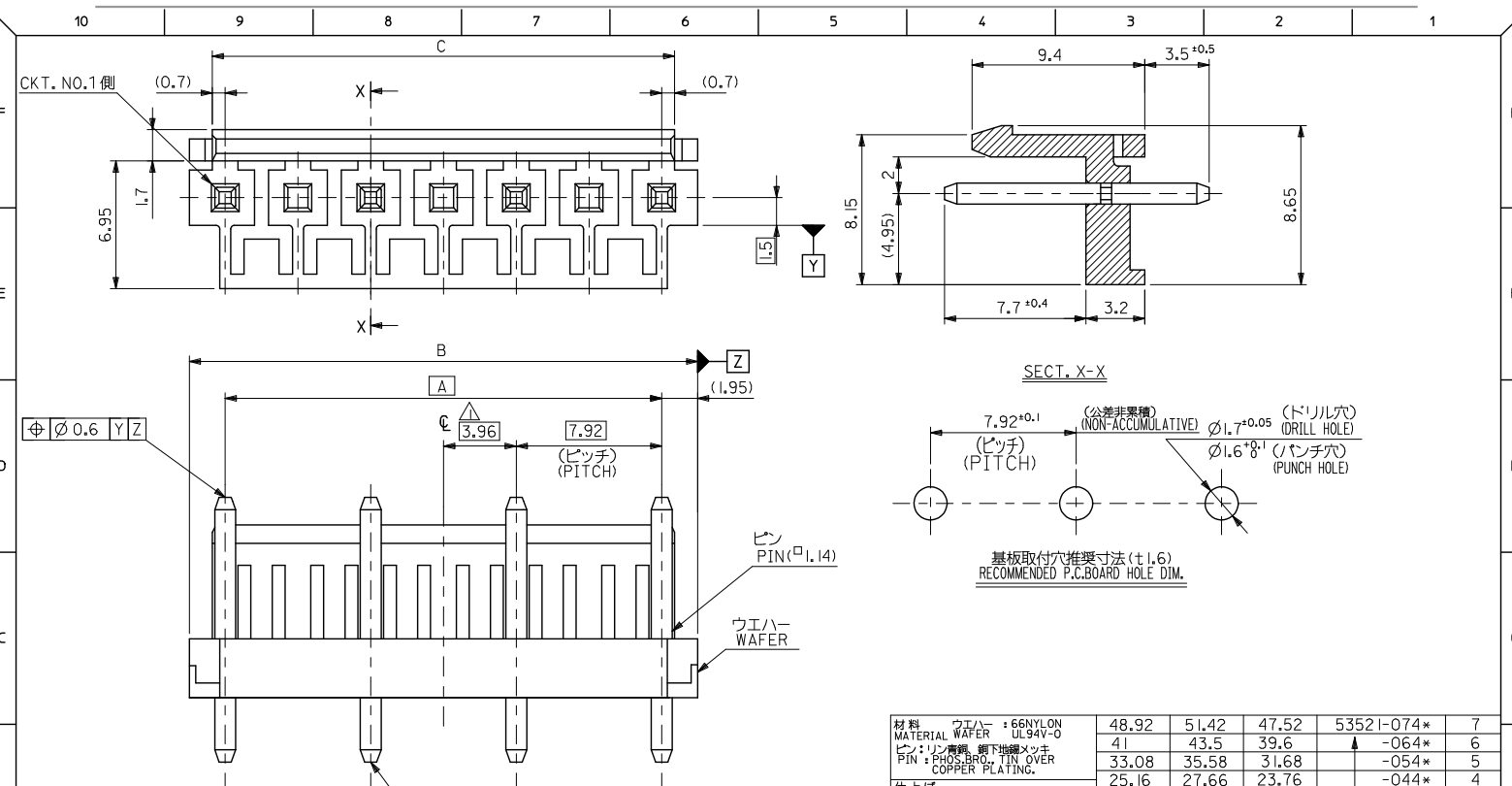
Stocking Distributor

Click to view price, real time Inventory, Delivery & Lifecycle Information:

[Molex Connector Corporation](#)
[0535210540](#)

For any questions, you can email us directly:

sales@integrated-circuit.com



注記
NOTES

- △ 偶数極品に適用。
APPLIES ONLY TO EVEN NO. CKT. SIZES.
- 2. 嵌合相手 : 51144 シリーズ
MATES WITH : 51144 SERIES.
- 3. 製品型番の下一桁は色を表します。
LAST DIGIT OF PART NUMBER INDICATES COLOR.
0:白 WHITE 1:黒 BLACK 2:赤 RED 3:黄 YELLOW 4:青 BLUE
5:灰 GRAY 6:緑 GREEN 7:茶 BROWN 8:橙 ORANGE 9:桃 PINK

材料	ウエハー : 66NYLON	48.92	51.42	47.52	53521-074*	7
MATERIAL	ウエハー : UL94V-0	41	43.5	39.6	▲ -064*	6
ピン : リン青銅 銅下地メッキ	PIN : PHOS.BRO. TIN OVER	33.08	35.58	31.68	▲ -054*	5
COPPER PLATING.		25.16	27.66	23.76	▲ -044*	4
仕上げ	—	17.24	19.74	15.84	▼ -034*	3
FINISH		9.32	11.82	7.92	53521-024*	2
適用電線範囲	—					2
WIRE RANGE						
被覆外径	—					
INS. RANGE						

REVISED EC NO. J2016-0406 T:DIRAKIMATSUYAMA 2015/10/20 CHIKIDAKAKAWA 2015/10/20 APPROX:UKITA 2015/10/26	GENERAL TOLERANCES (UNLESS SPECIFIED)		DIMENSION STYLE MM ONLY		SCALE ---	DESIGN UNITS METRIC	THIRD ANGLE PROJECTION
	0.25 UNDER	UNDER ±0.03	DRAWN BY	DATE	TITLE		
	0.25 OVER	0.5 UNDER ±0.05	C. ARIZONO	2009/04/07	7.92 WAFER WITH LOCK -LEAD FREE-		
	0.5 OVER	1.0 UNDER ±0.1	CHECKED BY	DATE			
	1.0 OVER	10 UNDER ±0.2	T. HARUYAMA	2009/04/07			
10 OVER	30 UNDER ±0.25	APPROVED BY	DATE	MATERIAL NO.	DOCUMENT NO.	SHEET NO.	
30 OVER	±0.3	N. UKITA	2009/04/07	SD-53521-001		1 OF 2	
ANGULAR	±3°	SEE TABLE		THIS DRAWING CONTAINS INFORMATION THAT IS PROPRIETARY TO MOLEX INCORPORATED AND SHOULD NOT BE USED WITHOUT WRITTEN PERMISSION			
DRAFT WHERE APPLICABLE MUST REMAIN WITHIN DIMENSIONS		SIZE					

10 9 8 7 6 5 4 3 2 1

										53521-0740	7			
										53521-0640	6			
									53521-0542	53521-0540	5			
									53521-0443	53521-0442	53521-0441	53521-0440	4	
									53521-0344	53521-0343	53521-0342	53521-0341	53521-0340	3
53521-0249	53521-0248	53521-0247	53521-0246	53521-0245	53521-0244	53521-0243	53521-0242	53521-0241	53521-0240					2
53521-***49 COLOR : PINK	53521-***48 COLOR : ORANGE	53521-***47 COLOR : BROWN	53521-***46 COLOR : GREEN	53521-***45 COLOR : GRAY	53521-***44 COLOR : BLUE	53521-***43 COLOR : YELLOW	53521-***42 COLOR : RED	53521-***41 COLOR : BLACK	53521-***40 COLOR : WHITE					極数 NO. OF CKTS.
PLASTIC BAG					PLASTIC BAG									
ORDER No. オ-ダ-番号					ORDER No. オ-ダ-番号									

REVISED										MODEL NO. 53521-***4*					
IEC NO. J2016-0406 T. DRANKAMATSUYAMA 2015/10/20 CHIKUDASAKAWA 2015/10/20 APPROX. NUKITA 2015/10/26										SCALE ---		DESIGN UNITS METRIC		THIRD ANGLE PROJECTION	
GENERAL TOLERANCES (UNLESS SPECIFIED) 0.25 UNDER UNDER ±0.03 0.25 OVER 0.5 UNDER ±0.05 0.5 OVER 1.0 UNDER ±0.1 1.0 OVER 10 UNDER ±0.2 10 OVER 30 UNDER ±0.25 30 OVER ±0.3 ANGULAR ±3 °										DIMENSION STYLE MM ONLY		DRAWN BY DATE C. ARIZONO 2009/04/07		TITLE 7.92 WAFER WITH LOCK -LEAD FREE-	
DRAFT WHERE APPLICABLE MUST REMAIN WITHIN DIMENSIONS										CHECKED BY DATE T. HARUYAMA 2009/04/07		APPROVED BY DATE N. UKITA 2009/04/07		DOCUMENT NO. SD-53521-001	
SEE TABLE										MATERIAL NO.		SHEET NO. 2 OF 2			
SIZE A3										THIS DRAWING CONTAINS INFORMATION THAT IS PROPRIETARY TO MOLEX INCORPORATED AND SHOULD NOT BE USED WITHOUT WRITTEN PERMISSION					

9 8 7 6 5 4 3 2 1