

## Excellent Integrated System Limited

Stocking Distributor

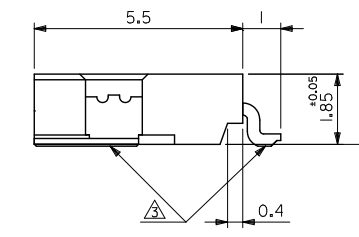
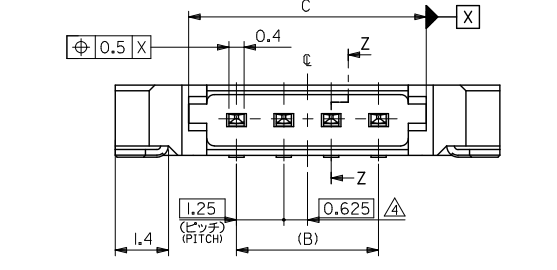
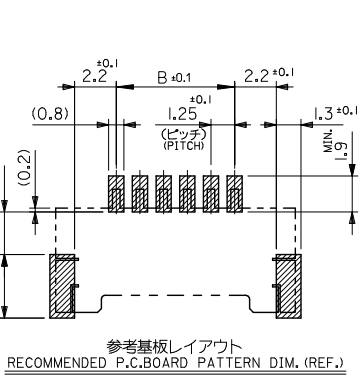
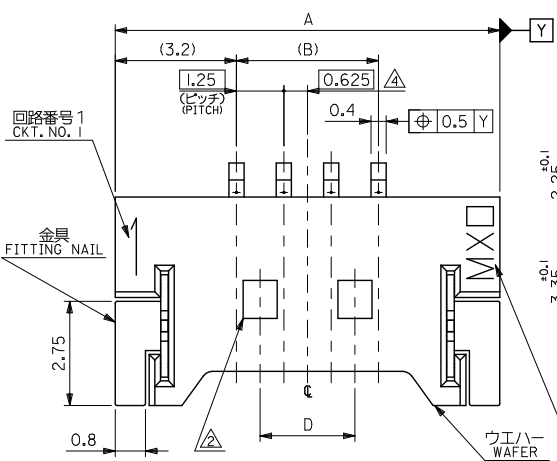
Click to view price, real time Inventory, Delivery & Lifecycle Information:

[Molex Connector Corporation](#)  
[0537801270](#)

For any questions, you can email us directly:

[sales@integrated-circuit.com](mailto:sales@integrated-circuit.com)

10 9 8 7 6 5 4 3 2 1



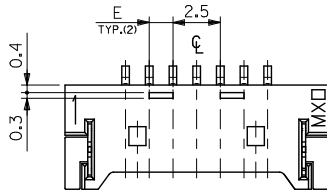
注記 NOTES

1. 嵌合相手: 51146 シリーズ  
MATES WITH: 51146 SERIES
2. ロック窓は2、3極品は1箇所、4極品以上は2箇所とする。  
LOCKING WINDOW: ONE PLACE FOR 2 AND 3 CIRCUIT PRODUCTS AND TWO PLACES FOR MORE THAN 3 CIRCUIT PRODUCTS.
3. 基準面 [V] からのソルダーテールと金具の半田付け面のズレ量は、上方向に 0.05MAX、下方向 0.15MAX、とし、20極以下の相互のバラツキ量は 0.1MAX、とする。  
MISALIGNMENT OF SOLDER TAIL AND FITTING NAIL FROM [V]: UPPER DIRECTION 0.05MAX, LOWER DIRECTION 0.15MAX, OFFSET BETWEEN UPPER AND LOWER 0.1MAX. (UNDER 20 CKTS.)
4. 偶数極の製品に適用。  
APPLY EVEN CIRCUIT PRODUCTS.
5. 材質 MATERIAL  
ウエハー WAFER: PPS, UL94V-0  
ピン: リン青銅 PIN: PHOSPHOR BRONZE  
コンタクト部: 金メッキ 0.2 マイクロメートル以上  
CONTACT AREA: GOLD 0.2 MICROMETER MINIMUM  
テール部: 錫メッキ 3.0 マイクロメートル以上  
TAIL AREA: TIN 3.0 MICROMETER MINIMUM  
下地メッキ: ニッケルメッキ 1.0 マイクロメートル以上  
UNDER PLATING: NICKEL 1.0 MICROMETER MINIMUM  
金具: リン青銅 FITTING NAIL: PHOSPHOR BRONZE  
錫メッキ 3.0 マイクロメートル以上  
TIN 3.0 MICROMETER MINIMUM  
下地メッキ: ニッケルメッキ 1.0 マイクロメートル以上  
UNDER PLATING: NICKEL 1.0 MICROMETER MINIMUM
6. 本製品は 53780-\*\*10/-\*\*18 の鉛フリー品である。  
THIS PRODUCT IS LEAD FREE OF 53780-\*\*10/-\*\*18.
7. ELV 及び RoHS 適合品  
ELV & RoHS COMPLIANT.

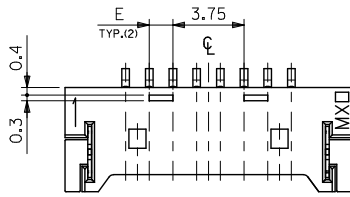
16.25	22.5	38.77	36.25	42.65	53780-3070	30
8.75	22.5	26.27	23.75	30.15		-2070
7.5	20	23.77	21.25	27.65		-1870
6.25	16.25	20.02	17.5	23.9		-1570
5	15	18.77	16.25	22.65		-1470
3.75	12.5	16.27	13.75	20.15		-1270
2.5	10	13.77	11.25	17.65		-1070
2.5	8.75	12.52	10	16.4		-0970
1.25	7.5	11.27	8.75	15.15		-0870
1.25	6.25	10.02	7.5	13.9		-0770
—	5	8.77	6.25	12.65		-0670
—	3.75	7.52	5	11.4		-0570
—	2.5	6.27	3.75	10.15		-0470
—	—	5.02	2.5	8.9		-0370
—	—	3.77	1.25	7.65		-0270
E	D	C	B	A	EMBOSSED PACKAGE	CKT.
					オーダー番号 ORDER No.	極数

REVISED EC NO. J2010-1927 DRAWN: SKUROSE 2010/03/25 CHKD: KASAKAWA 2010/03/26 APPR: NIKITA 2010/03/29	GENERAL TOLERANCES (UNLESS SPECIFIED)		DIMENSION STYLE	SCALE	DESIGN UNITS	CONNECTOR SERIES NO.
	10 UNDER	± 0.2	MM ONLY	---	METRIC	53780-**19
	10 OVER 30 UNDER	± 0.25				
	30 OVER	± 0.3				
	ANGULAR	± 3 °				
	DRAFT WHERE APPLICABLE MUST REMAIN WITHIN DIMENSIONS		SEE CHART			
			DRAWN BY T. UENO	DATE '04/04/15	TITLE 1.25 W/B CONN WAFER ASSY FOR SMT	
			CHECKED BY M. SASAO	DATE '04/04/15		
			APPROVED BY M. SASAO	DATE '04/04/15		
			MATERIAL NO.	DOCUMENT NO.		
				SD-53780-003		
			THIS DRAWING CONTAINS INFORMATION THAT IS PROPRIETARY TO MOLEX INCORPORATED AND SHOULD NOT BE USED WITHOUT WRITTEN PERMISSION			
						SHEET NO. 1 OF 2

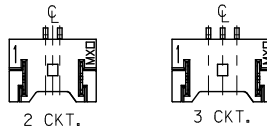
10 9 8 7 6 5 4 3 2 1



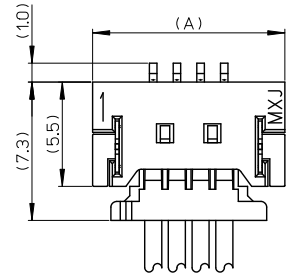
7~19 極の奇数極に適用  
APPLY FOR ODD CIRCUITS OF 7~19



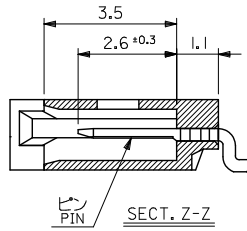
8~30 極の偶数極に適用  
APPLY FOR EVEN CIRCUITS OF 8~30



ロック形状図  
LOCK CONFIGURATION



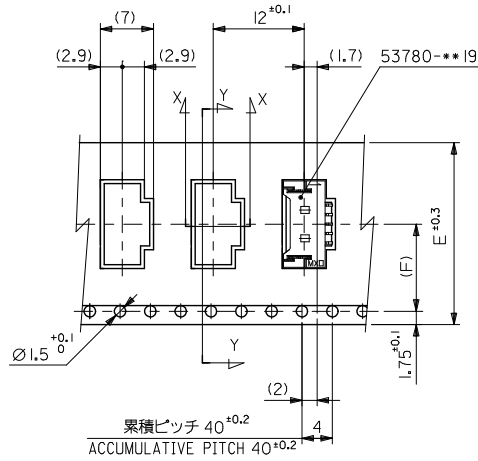
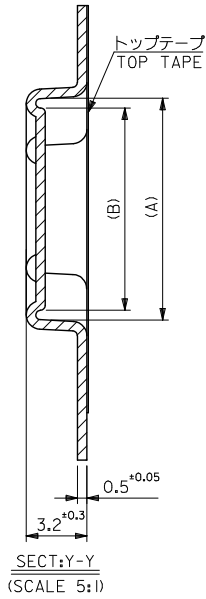
嵌合図 (SCALE 5:1)  
MATED CONNECTORS (SCALE 5:1)



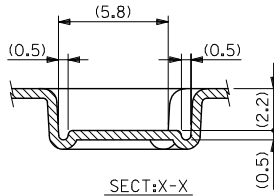
SECT. Z-Z

REVISED EC NO. J2010-1927 DRAWN:SKUROSE 2010/03/25 CHKD:KAKAWA 2010/03/26 APPR:MIKITA 2010/03/29	GENERAL TOLERANCES (UNLESS SPECIFIED)		DIMENSION STYLE MM ONLY		CONNECTOR SERIES NO. 53780-***19
	10 UNDER	± 0.2	DRAWN BY T. UENO	DATE '04/04/15	SCALE ---
	10 OVER 30 UNDER	± 0.25	CHECKED BY M. SASAO	DATE '04/04/15	DESIGN UNITS METRIC
	30 OVER	± 0.3	APPROVED BY M. SASAO	DATE '04/04/15	THIRD ANGLE PROJECTION
	ANGULAR ± 3 °	DRAFT WHERE APPLICABLE MUST REMAIN WITHIN DIMENSIONS		MATERIAL NO.	TITLE 1.25 W/B CONN WAFER ASSY FOR SMT
		SEE CHART		MOLEX INCORPORATED	DOCUMENT NO. SD-53780-003
		THIS DRAWING CONTAINS INFORMATION THAT IS PROPRIETARY TO MOLEX INCORPORATED AND SHOULD NOT BE USED WITHOUT WRITTEN PERMISSION		SIZE A3	SHEET NO. 2 OF 2

10 9 8 7 6 5 4 3 2 1



引き出し方向  
PULL OUT DIRECTION



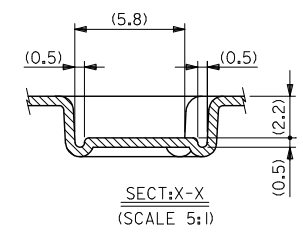
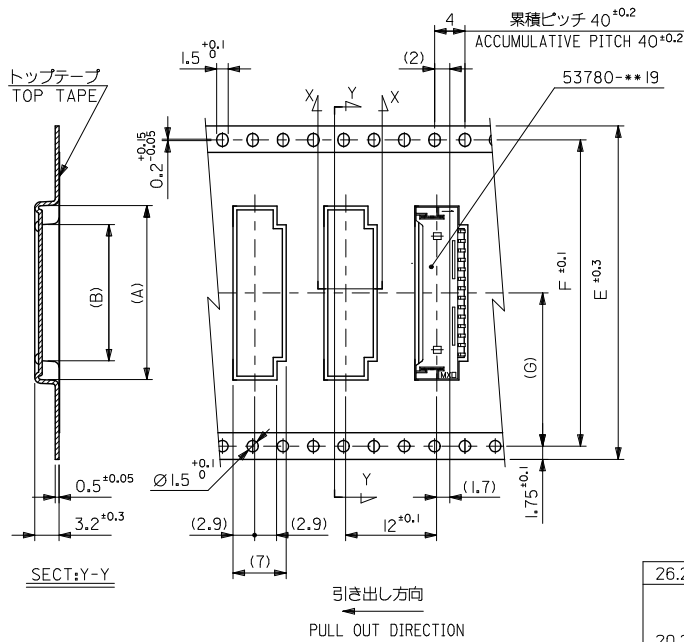
11.5	24	29.4	25.4	11.75	16.7	53780-0970	9
				10.5	15.45	53780-0870	8
				9.25	14.2	53780-0770	7
				8	12.95	53780-0670	6
7.5	16	21.4	17.4	6.75	11.7	53780-0570	5
				5.5	10.45	53780-0470	4
				4.25	9.2	53780-0370	3
(F)	E	D	C	(B)	(A)	MATERIAL NO.	継ぎ CKT.

キャリアテープ幅  
CARRIER TAPE WIDTH

MODEL NO. 53780-\*\*\*70  
DESIGN UNITS METRIC  
THIRD ANGLE PROJECTION

REVISED IEC NO. J2010-0021 DRAWN BY T. UENO 2009/07/07 CHECKED BY M. SASAO 2009/07/08 APPR. BY CHIKUMIYAMA 2009/07/08 DESCRIPTION REV. B	GENERAL TOLERANCES (UNLESS SPECIFIED)		DIMENSION STYLE	SCALE	DESIGN UNITS	TITLE 1.25 W/B WAFER ASSY EMBOSSED TAPE PACKAGE MOLEX INCORPORATED DOCUMENT NO. SD-53780-004 SHEET NO. 2 OF 3	
	10 UNDER	± 0.2	MM ONLY	---	METRIC		
	10 OVER 30 UNDER	± 0.25	DRAWN BY DATE T. UENO '04/04/15		APPROVED BY DATE M. SASAO '04/04/15		
	30 OVER	± 0.3	CHECKED BY DATE M. SASAO '04/04/15		APPROVED BY DATE M. SASAO '04/04/15		
	ANGULAR	± 3 °	MATERIAL NO.		MATERIAL NO.		
DRAFT WHERE APPLICABLE MUST REMAIN WITHIN DIMENSIONS			SEE CHART		THIS DRAWING CONTAINS INFORMATION THAT IS PROPRIETARY TO MOLEX INCORPORATED AND SHOULD NOT BE USED WITHOUT WRITTEN PERMISSION		

10 9 8 7 6 5 4 3 2 1



26.2	52.4	56	61.4	57.4	38	42.95	53780-3070	30
					25.5	30.45	53780-2070	20
					25.5	27.95	53780-1870	18
20.2	40.4	44	49.4	45.4	19.25	24.2	53780-1570	15
					18	22.95	53780-1470	14
					15.5	20.45	53780-1270	12
14.2	28.4	32	37.4	33.4	13	17.95	53780-1070	10
(G)	F	E キャリアテープ幅 CARRIER TAPE WIDTH	D	C	(B)	(A)	MATERIAL NO.	極数 CKT.

REVISED EC NO. J2010-0021 DRAWN BY DRWNTAKASAKI 2009/07/07 CHKD:MHAYASHI 2009/07/08 APPR:NIKIITA 2009/07/08	GENERAL TOLERANCES (UNLESS SPECIFIED)		DIMENSION STYLE MM ONLY		SCALE ---	MODEL NO. 53780-***70
	10 UNDER	± 0.2	DRAWN BY T. UENO	DATE '04/04/15	TITLE 1.25 W/B WAFER ASSY EMBOSSED TAPE PACKAGE	DESIGN UNITS METRIC
	10 OVER 30 UNDER	± 0.25	CHECKED BY M. SASAO	DATE '04/04/15	MATERIAL NO.	THIRD ANGLE PROJECTION
	30 OVER	± 0.3	APPROVED BY M. SASAO	DATE '04/04/15	DOCUMENT NO. SD-53780-004	SHEET NO. 3 OF 3
	ANGULAR ± 3 °	DRAFT WHERE APPLICABLE MUST REMAIN WITHIN DIMENSIONS		SEE CHART		THIS DRAWING CONTAINS INFORMATION THAT IS PROPRIETARY TO MOLEX INCORPORATED AND SHOULD NOT BE USED WITHOUT WRITTEN PERMISSION