

Excellent Integrated System Limited

Stocking Distributor

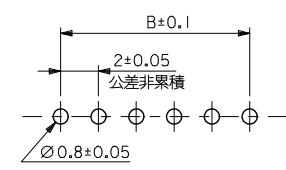
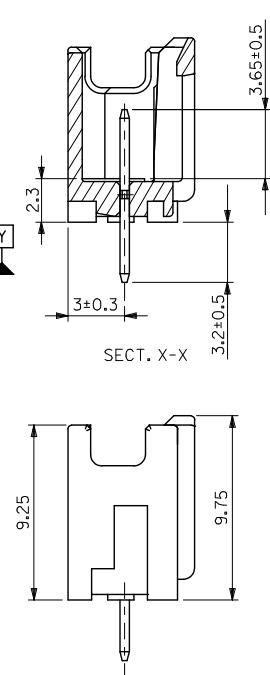
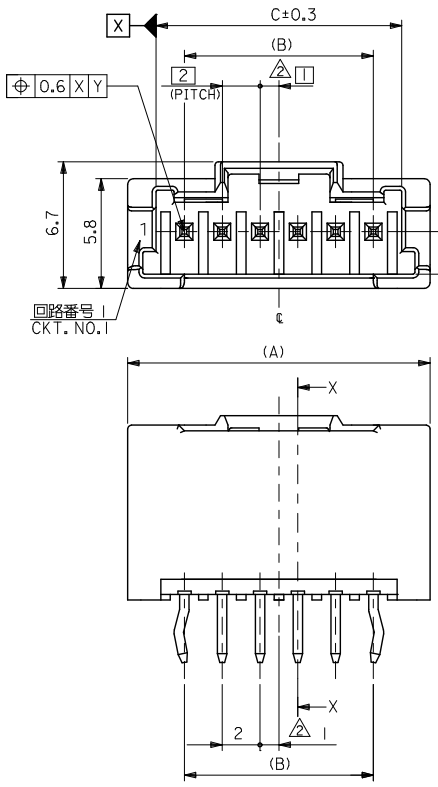
Click to view price, real time Inventory, Delivery & Lifecycle Information:

[Molex Connector Corporation](#)
[0559320230](#)

For any questions, you can email us directly:

sales@integrated-circuit.com

10 9 8 7 6 5 4 3 2 1



NOTE
 1. 嵌合相手: 51382-****
 2. 偶数種 (列) に適用。
 3. キングは両外側の位置に付加。
 4. 製品番号 MATERIAL NO.
 55932-****
 極数 CIRCUIT SIZE
 5. 材質
 ピン : 黄銅
 ハウジング : PBT
 6. めっき
 錫めっき
 下地 : ニッケルめっき

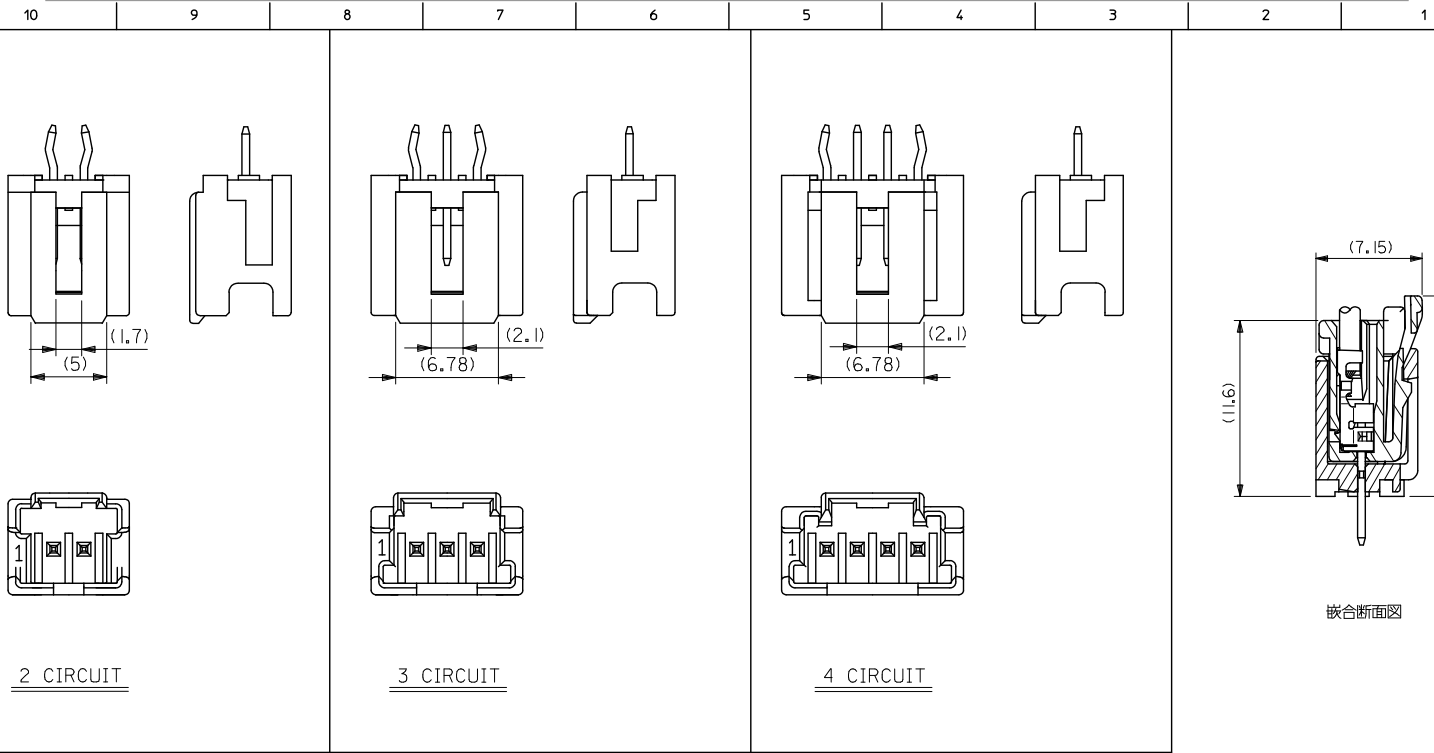
色 COLOR	極数 CIRCUIT SIZE
30 自然色 (白) NATURAL (WHITE)	
31 黒 BLACK	
32 赤 RED	
33 黄 YELLOW	
34 青 BLUE	
35 桃 PINK	
36 緑 GREEN	
37 茶 BROWN	
38 橙 ORANGE	
39 紫 VIOLET	
51 灰 GRAY	
53 蛍光黄 FLUORESCENT YELLOW	
54 水 PALE BLUE	
55 蛍光桃 FLUORESCENT PINK	
56 黄緑 YELLOWISH GREEN	
58 蛍光橙 FLUORESCENT ORANGE	

31	28	34	55932-15**	15
29	26	32	55932-14**	14
27	24	30	55932-13**	13
25	22	28	55932-12**	12
23	20	26	55932-11**	11
21	18	24	55932-10**	10
19	16	22	55932-09**	9
17	14	20	55932-08**	8
15	12	18	55932-07**	7
13	10	16	55932-06**	6
11	8	14	55932-05**	5
9	6	12	55932-04**	4
7	4	10	55932-03**	3
5	2	8	55932-02**	2

MODEL NO. : 55932-****

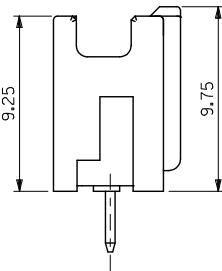
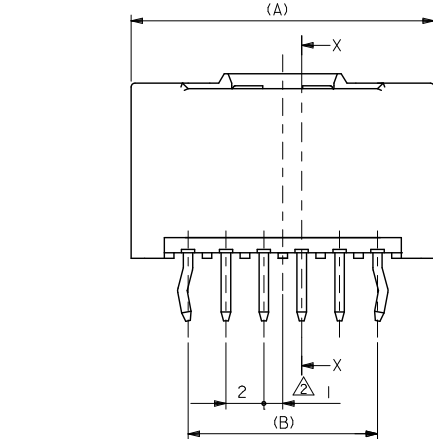
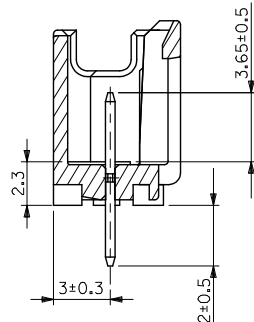
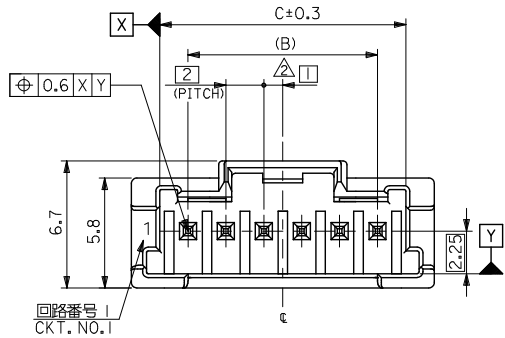
REVISED EC NO: J2015-0937 DRW: RMATSUYAMA 2015/10/05 CHK: KASAKAWA 2015/10/05 APPR: NIKITA 2015/10/26 REV: H	GENERAL TOLERANCES (UNLESS SPECIFIED)		DIMENSION STYLE		SCALE	DESIGN UNITS	THIRD ANGLE PROJECTION
	0.25 UNDER ±0.03		MM ONLY		---	METRIC	◎ □
	0.25 OVER 0.5 UNDER ±0.05	DRAWN BY T. NIITSU		DATE '02/02/08	TITLE		
	0.5 OVER 1.0 UNDER ±0.1	CHECKED BY K. ASAKAWA		DATE '03/06/12	2.0 W/B CONN. PLUG HOUSING ASS'Y ST -LEAD FREE-		
1.0 OVER 10 UNDER ±0.2	APPROVED BY T. YAMAGUCHI		DATE '03/06/12	molex			
10 OVER 30 UNDER ±0.25	MATERIAL NO.		SEE CHART	DOCUMENT NO. SD-55932-006		SHEET NO. 1 OF 2	
30 OVER ±0.3	ANGULAR ±3 °		THIS DRAWING CONTAINS INFORMATION THAT IS PROPRIETARY TO MOLEX INCORPORATED AND SHOULD NOT BE USED WITHOUT WRITTEN PERMISSION				
DRAFT WHERE APPLICABLE MUST REMAIN WITHIN DIMENSIONS							

10 9 8 7 6 5 4 3 2 1

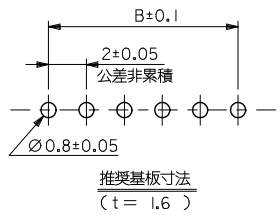


REVISED EC NO. J2015-0937 DRAWN BY MATSUJIMA 2015/10/05 CHIKIDAKAKAWA 2015/10/05 APPR. NIKITA 2015/10/26	GENERAL TOLERANCES (UNLESS SPECIFIED)		DIMENSION STYLE		SCALE	DESIGN UNITS	THIRD ANGLE PROJECTION 2.0 W/B CONN. PLUG HOUSING ASS'Y ST -LEAD FREE- molex DOCUMENT NO. SD-55932-006 SHEET NO. 2 OF 2
	0.25 UNDER ±0.03		MM ONLY		---	METRIC	
	0.25 OVER	0.5 UNDER ±0.05	DRAWN BY DATE		TITLE		
	0.5 OVER	1.0 UNDER ±0.1	T. NIITSU '02/02/08		2.0 W/B CONN. PLUG HOUSING ASS'Y ST -LEAD FREE-		
	1.0 OVER	10 UNDER ±0.2	CHECKED BY DATE		K. ASAKAWA '03/06/12		
10 OVER	30 UNDER ±0.25	APPROVED BY DATE		T. YAMAGUCHI '03/06/12			
30 OVER	±0.3	MATERIAL NO.		SEE SHEET 1			
ANGULAR	±3 °	DRAFT WHERE APPLICABLE MUST REMAIN WITHIN DIMENSIONS		SIZE A3		THIS DRAWING CONTAINS INFORMATION THAT IS PROPRIETARY TO MOLEX INCORPORATED AND SHOULD NOT BE USED WITHOUT WRITTEN PERMISSION	

10 9 8 7 6 5 4 3 2 1



NOTE
 1. 嵌合相手: 51382-****
 2. 偶数極 (列) に適用。
 3. キングは両外側の位置に付加。
 4. ピン: 黄銅, ニッケル下地鍍メッキ
 ハウジング: PBT
 適合リテーナー: 500638シリーズ
 APPLICABLE RETAINER: 500638 SERIES.
 製品番号 MATERIAL NO.
55932-****
 極数 CIRCUIT SIZE

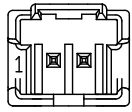
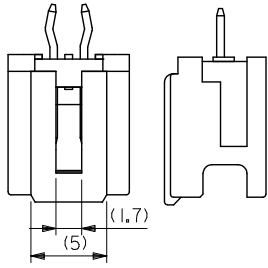


色 COLOR
30 自然色 (白) NATURAL (WHITE)
31 黒 BLACK
32 赤 RED
33 黄 YELLOW
34 青 BLUE
35 桃 PINK
36 緑 GREEN
37 茶 BROWN
38 橙 ORANGE
39 紫 VIOLET
51 灰 GRAY
53 蛍光黄 FLUORESCENT YELLOW
54 水 PALE BLUE
55 蛍光桃 FLUORESCENT PINK
56 黄緑 YELLOWISH GREEN
58 蛍光橙 FLUORESCENT ORANGE

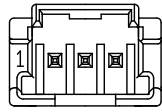
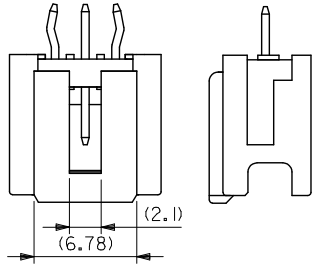
31	28	34	55932-15**	15
29	26	32	55932-14**	14
27	24	30	55932-13**	13
25	22	28	55932-12**	12
23	20	26	55932-11**	11
21	18	24	55932-10**	10
19	16	22	55932-09**	9
17	14	20	55932-08**	8
15	12	18	55932-07**	7
13	10	16	55932-06**	6
11	8	14	55932-05**	5
9	6	12	55932-04**	4
7	4	10	55932-03**	3
5	2	8	55932-02**	2

REVISED EC NO. J2016-0482 DRWN: MIYABE 2015/10/15 CHKD: KAKAWA 2015/11/10 APPR: NUKITA 2015/12/24	GENERAL TOLERANCES (UNLESS SPECIFIED)			MODEL NO.: 55932-****		DIMENSION STYLE		SCALE	DESIGN UNITS		MATERIAL NO. CKT. 2.0 W/B CONN.PLUG HOUSING ASS'Y WO BOSS -LEAD FREE- molex SEE CHART SD-55932-007 SHEET NO. 1 OF 2
	0.25 UNDER	UNDER	±0.03	MM ONLY		DATE		---	METRIC		
	0.25 OVER	0.5 UNDER	±0.05	DRAWN BY		TITLE					
	0.5 OVER	1.0 UNDER	±0.1	YMAEDA		2005/06/13					
1.0 OVER	10 UNDER	±0.2	CHECKED BY		DATE						
10 OVER	30 UNDER	±0.25	MTANAKA		2005/06/13						
30 OVER		±0.3	APPROVED BY		DATE						
	ANGULAR	±3°	NUKITA		2005/06/13						
	DRAFT WHERE APPLICABLE MUST REMAIN WITHIN DIMENSIONS		MATERIAL NO.		DOCUMENT NO.						

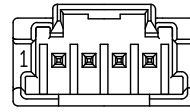
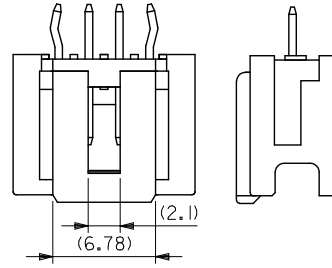
9 8 7 6 5 4 3 2 1



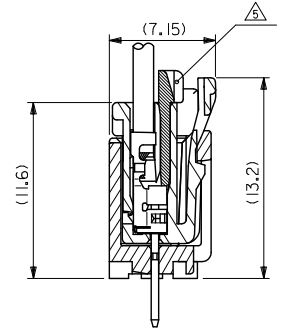
2 CIRCUIT



3 CIRCUIT



4 CIRCUIT



嵌合断面图

REVISED IEC NO. J2016-0482 DRAWN: MIYABE 2015/10/13 CHIKUDASAKAWA 2015/11/10 APPROVED: NUKITA 2015/12/24 REV A	GENERAL TOLERANCES (UNLESS SPECIFIED)			DIMENSION STYLE		SCALE	DESIGN UNITS	MODEL NO. : 55932-****	
				MM ONLY		---	METRIC	THIRD ANGLE PROJECTION	
	0.25 UNDER	UNDER	±0.03	DRAWN BY	DATE	TITLE			
	0.25 OVER	0.5 UNDER	±0.05	YMAEDA	2005/06/13	2.0 W/B CONN.PLUG HOUSING ASS'Y WO BOSS			
	0.5 OVER	1.0 UNDER	±0.1	CHECKED BY	DATE	-LEAD FREE-			
1.0 OVER	10 UNDER	±0.2	MTANAKA	2005/06/13	molex				
10 OVER	30 UNDER	±0.25	APPROVED BY	DATE	MATERIAL NO.		DOCUMENT NO.	SHEET NO.	
30 OVER		±0.3	NUKITA	2005/06/13	SEE SHEET 1		SD-55932-007	2 OF 2	
ANGULAR ±3 °			DRAFT WHERE APPLICABLE MUST REMAIN WITHIN DIMENSIONS		THIS DRAWING CONTAINS INFORMATION THAT IS PROPRIETARY TO MOLEX INCORPORATED AND SHOULD NOT BE USED WITHOUT WRITTEN PERMISSION				