

## Excellent Integrated System Limited

Stocking Distributor

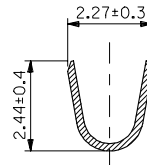
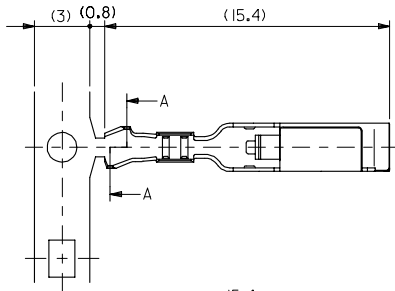
Click to view price, real time Inventory, Delivery & Lifecycle Information:

[Molex Connector Corporation](#)  
[0560560005](#)

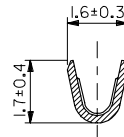
For any questions, you can email us directly:

[sales@integrated-circuit.com](mailto:sales@integrated-circuit.com)

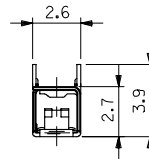
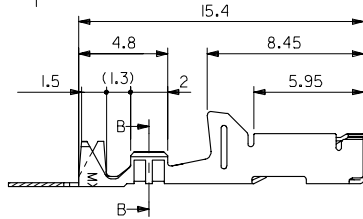
10 9 8 7 6 5 4 3 2 1



A-A  
(10-1)



B-B  
(10-1)



注記  
NOTES

1. 適合ハウジング:51154-160\*, 501598-1604  
APPLICABLE HOUSING:51154-160\*, 501598-1604
2. 材料:リン青銅、鍍メッキ材 (t=0.2)  
MATERIAL:PRE-TINNED PHOSPHOR BRONZE (t=0.2)
3. 適用電線:APPLICABLE WIRE RANGE  
CAVS-0.3,0.22  
CAVS-0.3  
AVSS-0.3
4. 被覆外径 Ø0.95-1.5  
INS. RANGE

56056-0005	連鎖状 CHAIN
MATERIAL NO.	端子形状 FORM

REVISED EC NO: J2006-1214 DRW: NISHIBATA 2005/10/14 CHKD: TAITO 2005/10/14 APPR: AKANE SHIGE 2005/10/18 A	GENERAL TOLERANCES (UNLESS SPECIFIED)		DIMENSION STYLE MM ONLY	SCALE 5:1	DESIGN UNITS METRIC	THIRD ANGLE PROJECTION
	10 UNDER	±0.2	DRAWN BY HKOMATSU	DATE 2001/7/5	TITLE 4.0 WIRE TO WIRE CRIMP RECEPTACLE (SAE J1962 DIAGNOSTIC CONNECTOR)	
	10 OVER 30 UNDER	±0.25	CHECKED BY MAYAMAMOTO	DATE 2001/7/5	MOLEX INCORPORATED	
	30 OVER	±0.3	APPROVED BY YOITO	DATE 2001/7/5	MATERIAL NO. SEE CHART	DOCUMENT NO. SD-56056-002
ANGULAR ±3°		DRAFT WHERE APPLICABLE MUST REMAIN WITHIN DIMENSIONS	SIZE A3 THIS DRAWING CONTAINS INFORMATION THAT IS PROPRIETARY TO MOLEX INCORPORATED AND SHOULD NOT BE USED WITHOUT WRITTEN PERMISSION			