



Distributor of Molex Connector Corporation: Excellent Integrated System Limited
Datasheet of 0579899810 - Connector Quick Connect Tab 14-18 AWG 0.250" (6.35mm) Crimp

Contact us: sales@integrated-circuit.com Website: www.integrated-circuit.com

Excellent Integrated System Limited

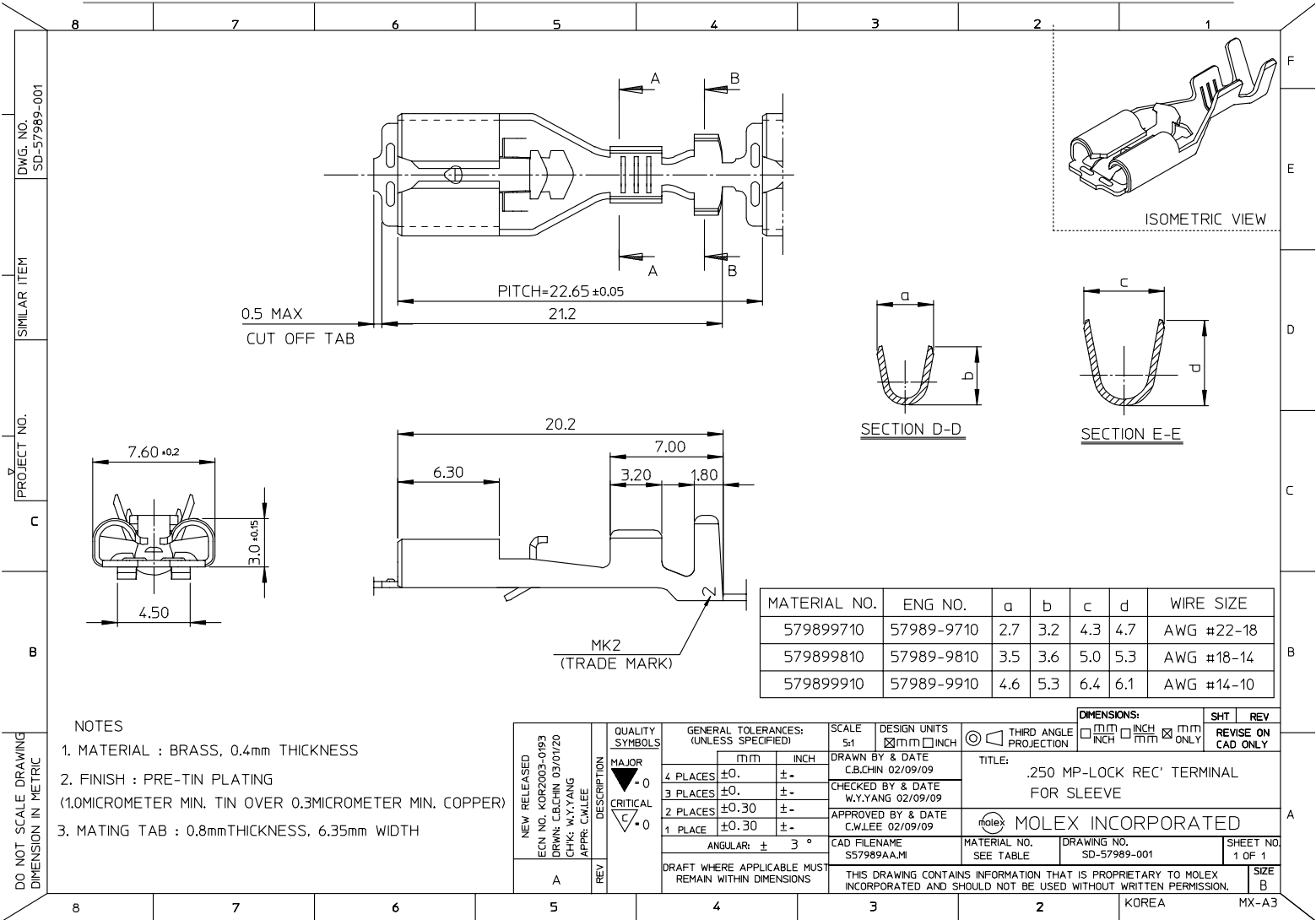
Stocking Distributor

Click to view price, real time Inventory, Delivery & Lifecycle Information:

[Molex Connector Corporation](#)
[0579899810](#)

For any questions, you can email us directly:

sales@integrated-circuit.com



NOTES

1. MATERIAL : BRASS, 0.4mm THICKNESS
2. FINISH : PRE-TIN PLATING (1.0MICROMETER MIN. TIN OVER 0.3MICROMETER MIN. COPPER)
3. MATING TAB : 0.8mmTHICKNESS, 6.35mm WIDTH

NEW RELEASED ECN NO. KOR2003-0193 DRWN: C.B.CHIN 02/01/20 CHK: W.Y.YANG APPR: C.W.LEE	DESCRIPTION MAJOR -0 CRITICAL C/-0	GENERAL TOLERANCES: (UNLESS SPECIFIED)		SCALE 5:1	DESIGN UNITS <input checked="" type="checkbox"/> mm <input type="checkbox"/> INCH	THIRD ANGLE PROJECTION <input checked="" type="checkbox"/> <input type="checkbox"/>	DIMENSIONS: <input type="checkbox"/> mm <input type="checkbox"/> INCH <input checked="" type="checkbox"/> mm ONLY		SHT 1	REV
		4 PLACES ±0.	±-	DRAWN BY & DATE C.B.CHIN 02/09/09	TITLE: .250 MP-LOCK REC' TERMINAL FOR SLEEVE				SHEET NO. 1 OF 1	SIZE B
		3 PLACES ±0.	±-	CHECKED BY & DATE W.Y.YANG 02/09/09	MOLEX INCORPORATED					
		2 PLACES ±0.30	±-	APPROVED BY & DATE C.W.LEE 02/09/09	CAD FILENAME S57989AA.MI	MATERIAL NO. SEE TABLE	DRAWING NO. SD-57989-001			
1 PLACE ±0.30	±-	ANGULAR: ± 3°	THIS DRAWING CONTAINS INFORMATION THAT IS PROPRIETARY TO MOLEX INCORPORATED AND SHOULD NOT BE USED WITHOUT WRITTEN PERMISSION.							
DRAFT WHERE APPLICABLE MUST REMAIN WITHIN DIMENSIONS		KOREA MX-A3								

DO NOT SCALE DRAWING DIMENSION IN METRIC