

Excellent Integrated System Limited

Stocking Distributor

Click to view price, real time Inventory, Delivery & Lifecycle Information:

[Molex Connector Corporation](#)
[0674910022](#)

For any questions, you can email us directly:

sales@integrated-circuit.com

10 9 8 7 6 5 4 3 2 1

F

E

D

C

B

A

F

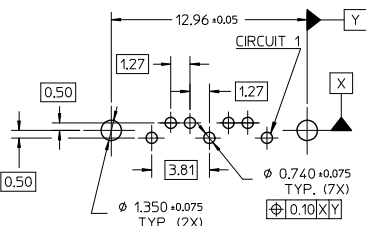
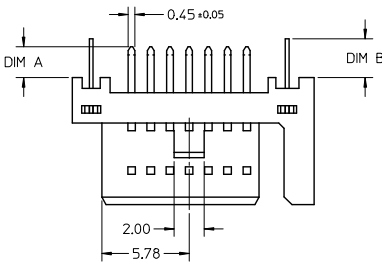
E

D

C

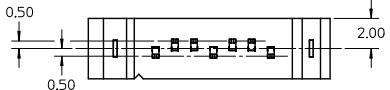
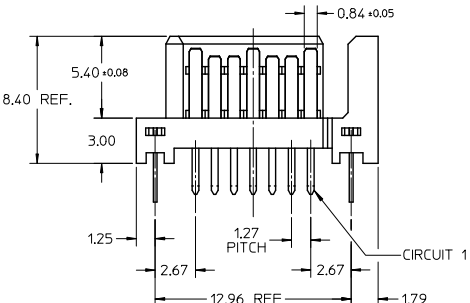
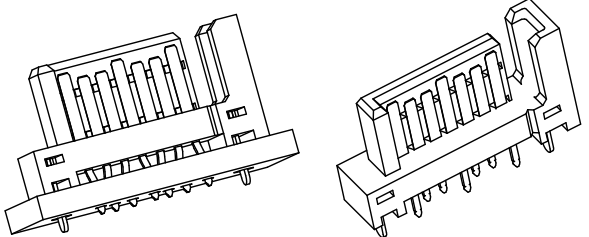
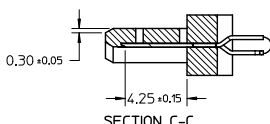
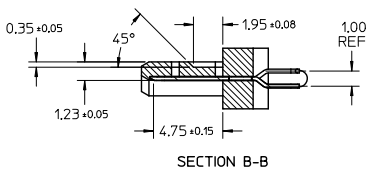
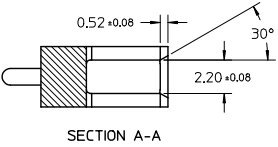
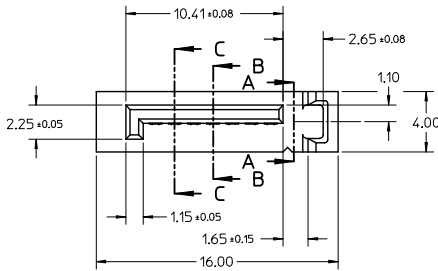
B

A



RECOMMENDED P.C.B. LAYOUT (T=1.6mm/2.0mm/2.4mm)

- NOTES:**
- MATERIAL:**
HOUSING: THERMAL PLASTIC, UL94V-0, COLOR: SEE SHEET2
TERMINAL/PEG: COPPER ALLOY, THICKNESS=0.25MM
 - TERMINAL PLATING:**
CONTACT AREA: (a) GOLD FLASH
(b) 0.76 MICRON GOLD PLATED
(c) 0.38 MICRON GOLD PLATED
 - SOLDER TAIL:**
1.27 MICRON MIN. MATTE TIN PLATED
 - UNDER PLATE:**
1.27 MICRON MIN. NICKEL PLATED
 - PEG PLATING:**
1.27 MICRON MIN. MATTE TIN PLATED OVERALL
1.27 MICRON MIN. NICKEL UNDER PLATED
 - PACKAGING SPECIFICATION REFER TO PK-67491-001**
 - PRODUCT SPECIFICATION REFER TO PS-67491-001**
 - MATING PART: 67489**
 - RECOMMENDED PROCESS: WAVE SOLDERING**



OBsolete PARTS EC NO: SH2012-0231 DRAWING: LI CHKD: XZhang APPR: ATIN REV: J	QUALITY SYMBOLS √=0 √=0 √=0	GENERAL TOLERANCES (UNLESS SPECIFIED)		DIMENSION STYLE MM ONLY		SCALE 4:1	DESIGN UNITS METRIC	THIRD ANGLE PROJECTION		
		4 PLACES ± --- ± ---	3 PLACES ± --- ± ---	2 PLACES ± 0.15 ± ---	1 PLACE ± 0.25 ± ---	ANGULAR ± 3 °	DRAWN BY GRATE MA DATE 2004/02/02	CHECKED BY YAJUN DATE 2004/02/02	APPROVED BY RZHANG DATE 2010/11/03	TITLE 1.27MM HIGH SPEED PLUG VERTICAL TYPE
		DRAFT WHERE APPLICABLE MUST REMAIN WITHIN DIMENSIONS		SEE CHART IN SHEET 2		MATERIAL NO.	MOLEX INCORPORATED	DOCUMENT NO. SD-67491-001	SHEET NO. 1 OF 2	
		THIS DRAWING CONTAINS INFORMATION THAT IS PROPRIETARY TO MOLEX INCORPORATED AND SHOULD NOT BE USED WITHOUT WRITTEN PERMISSION								

10 9 8 7 6 5 4 3 2 1

10	9	8	7	6	5	4	3	2	1
P/N	PLATING TYPE	DIM 'A'	DIM 'B'	COLOR	SOLDE AREA PLATING				
67491-0020	SEE NOTE 2(a)	2.05	2.57	BLACK	PURE TIN MATTE FINISH				
67491-0021	SEE NOTE 2(b)								
67491-0022	SEE NOTE 2(c)								
67491-0025	SEE NOTE 2(a)	2.05	2.57	BLUE, PANTONE NO. 293C ΔE<3					
67491-2020	SEE NOTE 2(a)								
67491-2021	SEE NOTE 2(b)	2.35	3.20	BLACK					
67491-2025	SEE NOTE 2(a)								
67491-2027	SEE NOTE 2(c)	3.00	3.20	BLACK					
67491-3010	SEE NOTE 2(a)								
67491-3011	SEE NOTE 2(b)								
67491-3012	SEE NOTE 2(c)	3.00	3.20	BLUE, PANTONE NO. 293C ΔE<3					
67491-3110	SEE NOTE 2(a)								



OBSOLETE PARTS EC NO: SH2012-0231 DRWING: LI CHKD: XZJHANG APPR: JATIN	2012/01/17	2012/01/17	2012/01/20	QUALITY SYMBOLS √=0 √=0 √=0	GENERAL TOLERANCES (UNLESS SPECIFIED) mm INCH 4 PLACES ± --- ± --- 3 PLACES ± --- ± --- 2 PLACES ± 0.15 ± --- 1 PLACE ± 0.25 ± --- ANGULAR ± 3 °	DIMENSION STYLE MM ONLY		SCALE 4:1	DESIGN UNITS METRIC	THIRD ANGLE PROJECTION
	DRAWN BY GRATE MA		DATE 2004/02/02			TITLE 1.27MM HIGH SPEED PLUG VERTICAL TYPE				
	CHECKED BY YA JUN		DATE 2004/02/02			MOLEX INCORPORATED				
	APPROVED BY RZHANG		DATE 2010/11/03			DOCUMENT NO. SD-67491-001				
DRAFT WHERE APPLICABLE MUST REMAIN WITHIN DIMENSIONS					SEE CHART		SHEET NO. 2 OF 2			
THIS DRAWING CONTAINS INFORMATION THAT IS PROPRIETARY TO MOLEX INCORPORATED AND SHOULD NOT BE USED WITHOUT WRITTEN PERMISSION										

ib_frame_A3_P_AM_T
Rev. F 2009/06/18