

Excellent Integrated System Limited

Stocking Distributor

Click to view price, real time Inventory, Delivery & Lifecycle Information:

[Molex Connector Corporation](#)
[0674913011](#)

For any questions, you can email us directly:

sales@integrated-circuit.com

10 9 8 7 6 5 4 3 2 1

F

E

D

C

B

A

F

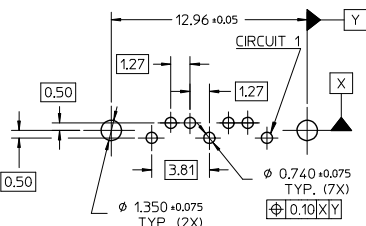
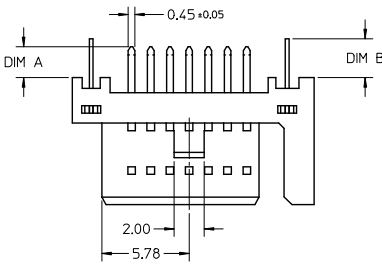
E

D

C

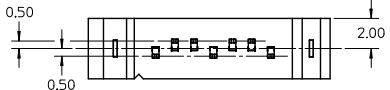
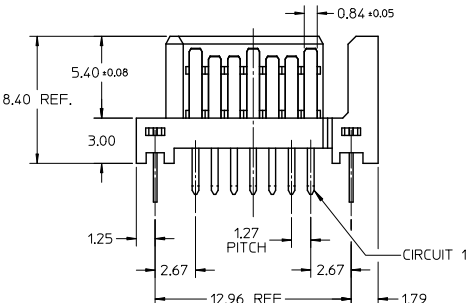
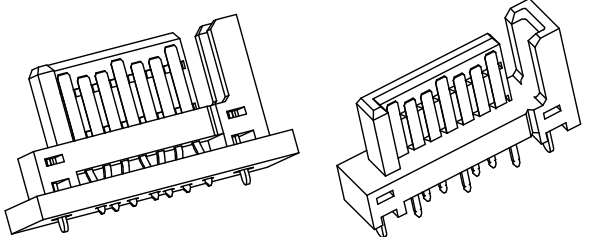
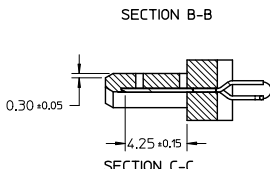
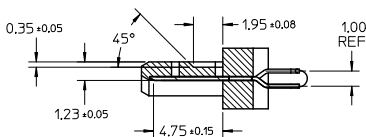
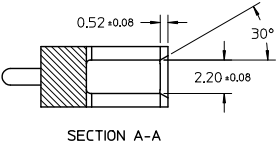
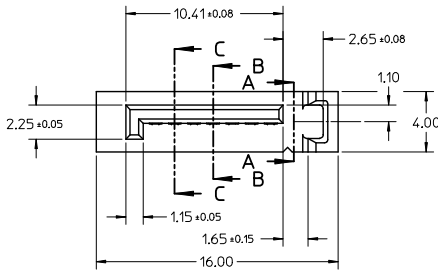
B

A



RECOMMENDED P.C.B. LAYOUT (T=1.6mm/2.0mm/2.4mm)

- NOTES:**
- MATERIAL:**
HOUSING: THERMAL PLASTIC, UL94V-0, COLOR: SEE SHEET 2
TERMINAL/PEG: COPPER ALLOY, THICKNESS=0.25MM
 - TERMINAL PLATING:**
CONTACT AREA: (a) GOLD FLASH
(b) 0.76 MICRON GOLD PLATED
(c) 0.38 MICRON GOLD PLATED
 - SOLDER TAIL:**
1.27 MICRON MIN. MATTE TIN PLATED
 - UNDER PLATE:**
1.27 MICRON MIN. NICKEL PLATED
 - PEG PLATING:**
1.27 MICRON MIN. MATTE TIN PLATED OVERALL
1.27 MICRON MIN. NICKEL UNDER PLATED
 - PACKAGING SPECIFICATION REFER TO PK-67491-001**
 - PRODUCT SPECIFICATION REFER TO PS-67491-001**
 - MATING PART: 67489**
 - RECOMMENDED PROCESS: WAVE SOLDERING**



OBSOLETE PARTS EC NO. SH2012-0231 DRAWING: LI CHKD: XZhang APPR: ATIN	DESCRIPTION REV	QUALITY SYMBOLS √=0 √=0 √=0	GENERAL TOLERANCES (UNLESS SPECIFIED)		DIMENSION STYLE MM ONLY		SCALE 4:1	DESIGN UNITS METRIC	THIRD ANGLE PROJECTION		
			mm	INCH	DRAWN BY GRATE MA	DATE 2004/02/02	TITLE 1.27MM HIGH SPEED PLUG VERTICAL TYPE				
			4 PLACES ±---	±---	CHECKED BY YAJUN	DATE 2004/02/02	MATERIAL NO. SD-67491-001				
			3 PLACES ±---	±---	APPROVED BY RZHANG	DATE 2010/11/03	DOCUMENT NO. SD-67491-001				
		1 PLACE ±0.25 ±---		ANGULAR ± 3 °		MATERIAL NO. SD-67491-001		SHEET NO. 1 OF 2			
DRAFT WHERE APPLICABLE MUST REMAIN WITHIN DIMENSIONS			SEE CHART IN SHEET 2		THIS DRAWING CONTAINS INFORMATION THAT IS PROPRIETARY TO MOLEX INCORPORATED AND SHOULD NOT BE USED WITHOUT WRITTEN PERMISSION						

10 9 8 7 6 5 4 3 2 1

10	9	8	7	6	5	4	3	2	1
P/N	PLATING TYPE	DIM 'A'	DIM 'B'	COLOR	SOLDE AREA PLATING				
67491-0020	SEE NOTE 2(a)	2.05	2.57	BLACK	PURE TIN MATTE FINISH				
67491-0021	SEE NOTE 2(b)								
67491-0022	SEE NOTE 2(c)								
67491-0025	SEE NOTE 2(a)	2.05	2.57	BLUE, PANTONE NO. 293C ΔE<3					
67491-2020	SEE NOTE 2(a)								
67491-2021	SEE NOTE 2(b)	2.35	3.20	BLACK					
67491-2025	SEE NOTE 2(a)								
67491-2027	SEE NOTE 2(c)	3.00	3.20	BLACK					
67491-3010	SEE NOTE 2(a)								
67491-3011	SEE NOTE 2(b)								
67491-3012	SEE NOTE 2(c)	3.00	3.20	BLUE, PANTONE NO. 293C ΔE<3					
67491-3110	SEE NOTE 2(a)								



OBSOLETE PARTS EC NO: SH2012-0231 DRAWING: 2012/01/17 CHKD: XZJANG APPR: JATIN 2012/01/17 2012/01/20	QUALITY SYMBOLS	GENERAL TOLERANCES (UNLESS SPECIFIED)	DIMENSION STYLE	SCALE	DESIGN UNITS	THIRD ANGLE PROJECTION
	$\sqrt{\text{A}}=0$ $\sqrt{\text{B}}=0$ $\sqrt{\text{C}}=0$	mm INCH 4 PLACES ± --- ± --- 3 PLACES ± --- ± --- 2 PLACES ± 0.15 ± --- 1 PLACE ± 0.25 ± --- ANGULAR ± 3 °	MM ONLY	4:1	METRIC	
	DESCRIPTION	DRAFT WHERE APPLICABLE MUST REMAIN WITHIN DIMENSIONS	SEE CHART	TITLE		MOLEX INCORPORATED
	REV	MATERIAL NO.	DOCUMENT NO.	SD-67491-001		SHEET NO. 2 OF 2

ib_frame_A3_P_AM_T
Rev. F 2009/06/18

9	8	7	6	5	4	3	2	1
---	---	---	---	---	---	---	---	---