

Excellent Integrated System Limited

Stocking Distributor

Click to view price, real time Inventory, Delivery & Lifecycle Information:

[Molex Connector Corporation](#)
[0716910003](#)

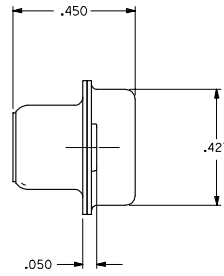
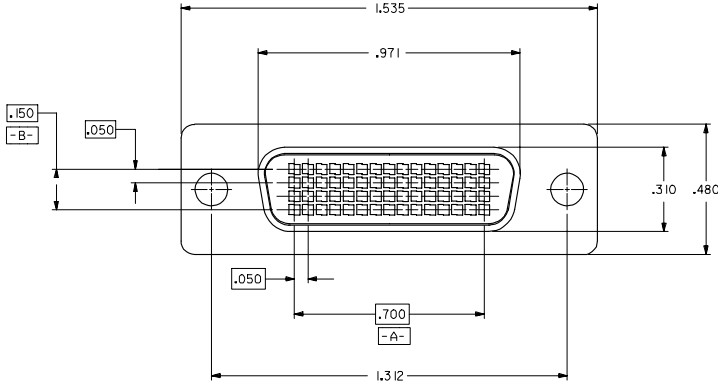
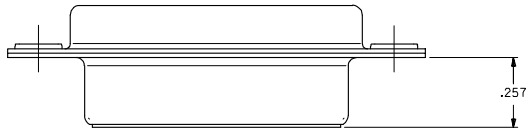
For any questions, you can email us directly:

sales@integrated-circuit.com

PART NUMBER	PRODUCT DESCRIPTION	FRONT SHELL PLATING
71691-0003	60ckt I/O RECEPTACLE CONNECTOR SUB-ASSEMBLY	BRIGHT TIN
71691-9003	60ckt I/O RECEPTACLE CONNECTOR SUB-ASSEMBLY	BRIGHT NICKEL

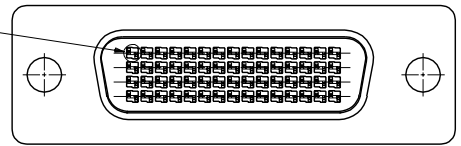
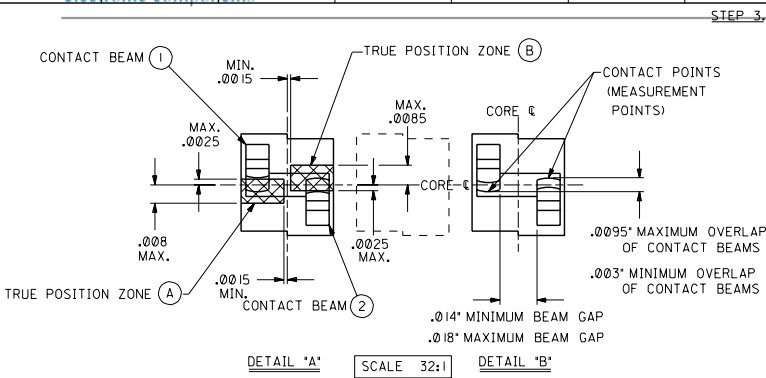
NOTES:

- DAMAGE OF THE CONTACT FINGERS DURING THE ASSEMBLY OPERATION IS UNACCEPTABLE. CORRECT ALIGNMENT OF THE TERMINAL STRIP ASSEMBLIES, PRIOR TO AND DURING ASSEMBLY IS NECESSARY TO AVOID DAMAGE.
- PLASTIC HOUSING: GLASS FILLED LCP (LIQUID CRYSTAL POLYMER), UL 94 V-0, COLOR: BLACK.
- FRONT SHELL:
DEEP DRAWN STEEL, .016" THICK:
PLATING: SEE TABLE
BRIGHT TIN: 150-250 MICRONS BRIGHT TIN OVER 50-150 MICRONS NICKEL OVER COPPER FLASH OVERALL (OPTIONAL).
BRIGHT NICKEL: 100-175 MICRONS BRIGHT NICKEL OVER 50 MICRONS MAXIMUM COPPER OVERALL.
- BACK SHELL:
DEEP DRAWN STEEL, .016" THICK:
PLATING: 150-250 MICRONS BRIGHT TIN OVER 50-150 MICRONS NICKEL OVER COPPER FLASH OVERALL (OPTIONAL).
- THIS PRODUCT CONFORMS TO PRODUCT SPECIFICATION PS-70928.
- INSERT-MOLDED TERMINAL STRIP ASSEMBLIES ARE SUPPLIED SEPARATELY (SEE SHEET 2 FOR ORDERING INFORMATION).
- PACKAGING SPECIFICATION PK-70873-0236 APPLIES.



2	A
1	C
SHT	REV

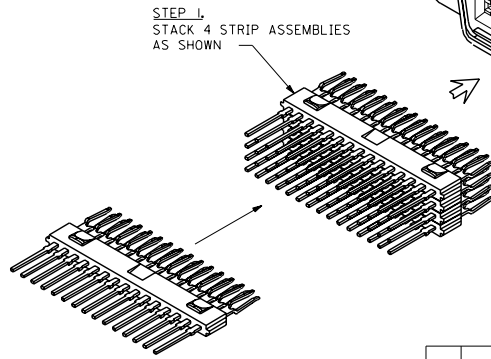
ADD 71691-9003 EC NO: UCP2006-0666 DRAWING BARRA 2006/02/06 CHK KJUMINGAN 2006/02/07 APPR: SMILLER 2006/02/09 REV DESCRIPTION	QUALITY SYMBOLS	GENERAL TOLERANCES (UNLESS SPECIFIED)	DIMENSION STYLE	SCALE	DESIGN UNITS	THIRD ANGLE PROJECTION
	▽=0 ∇=0	mm INCH 4 PLACES ±--- ±--- 3 PLACES ±--- ±--- 2 PLACES ±--- ±--- 1 PLACE ±--- ±--- ANGULAR ±1/2°	INCH ONLY DRAWN BY DATE SCHMIDGALL 93/08/04 CHECKED BY DATE DSULLIVAN 93/08/04 APPROVED BY DATE BIXLER 93/08/04	4:1	INCH	THIRD ANGLE PROJECTION
						TITLE .050 PITCH LFH 60 CKT I/O SALES ASSEMBLY
						MATERIAL NO. DOCUMENT NO. SEE TABLE SDA-71691-0003 MOLEX INCORPORATED
		DRAFT WHERE APPLICABLE MUST REMAIN WITHIN DIMENSIONS	SIZE C			SHEET NO. 1 OF 2



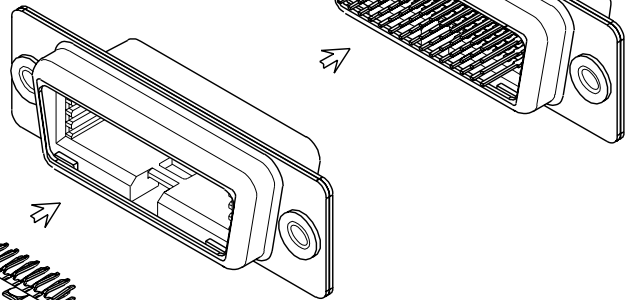
CONTACT TRUE POSITION REQUIREMENTS

- CONTACT BEAM (1) MAY BE LOCATED ANYWHERE WITHIN THE BOUNDARIES OF TRUE POSITION ZONE (A) PROVIDED THAT THE CONDITIONS OF DETAIL 'B' ARE MET.
- CONTACT BEAM (2) MAY BE LOCATED ANYWHERE WITHIN THE BOUNDARIES OF TRUE POSITION ZONE (B) PROVIDED THAT THE CONDITIONS OF DETAIL 'B' ARE MET.

NOTE: ALL TRUE POSITION MEASUREMENTS TO BE TAKEN AT CONTACT POINTS, NOT AT CONTACT TIPS. ALL TRUE POSITION ZONES ARE TO BE DEFINED RELATIVE TO THE HOUSING CORE CENTERLINES.



INSERT-MOLDED TERMINAL STICKS
FOUR REQUIRED PER ASSEMBLY
(SEE SALES DRAWING: SDA-70985-1000*)



DIMENSIONS SHOWN IN METRIC/INCH UNLESS OTHERWISE SPECIFIED TOLERANCES ARE AS FOLLOWS		MFG. SH. REV.	
3 PLACES ± .001	INCH	REVISE ONLY ON CAD SYSTEM	
2 PLACES ± .002	METRIC	TITLE	
1 PLACE ± .005		.050" PITCH LFH 60 ckt I/O SALES ASSEMBLY	
UNLESS OTHERWISE APPLICABLE MUST REMAIN WITHIN DIMENSIONS		DATE	
BY: SCHMIDT, CALISTO SULLIVAN		08/04/93	
APP'D: BIXLER		MOLEX INCORPORATED	
SCALE: 4:1		SHEET NO. 2	
FILE NAME: S7169102.DWG		DRAWING NO. SDA-71691-0003	
LTR. REVISIONS		THIS DRAWING CONTAINS INFORMATION THAT IS PROPRIETARY TO MOLEX INC. AND SHALL NOT BE USED WITHOUT WRITTEN PERMISSION.	
LTR. REVISIONS		TEST. CD	