

Excellent Integrated System Limited

Stocking Distributor

Click to view price, real time Inventory, Delivery & Lifecycle Information:

[Molex Connector Corporation](#)
[0731740270](#)

For any questions, you can email us directly:

sales@integrated-circuit.com

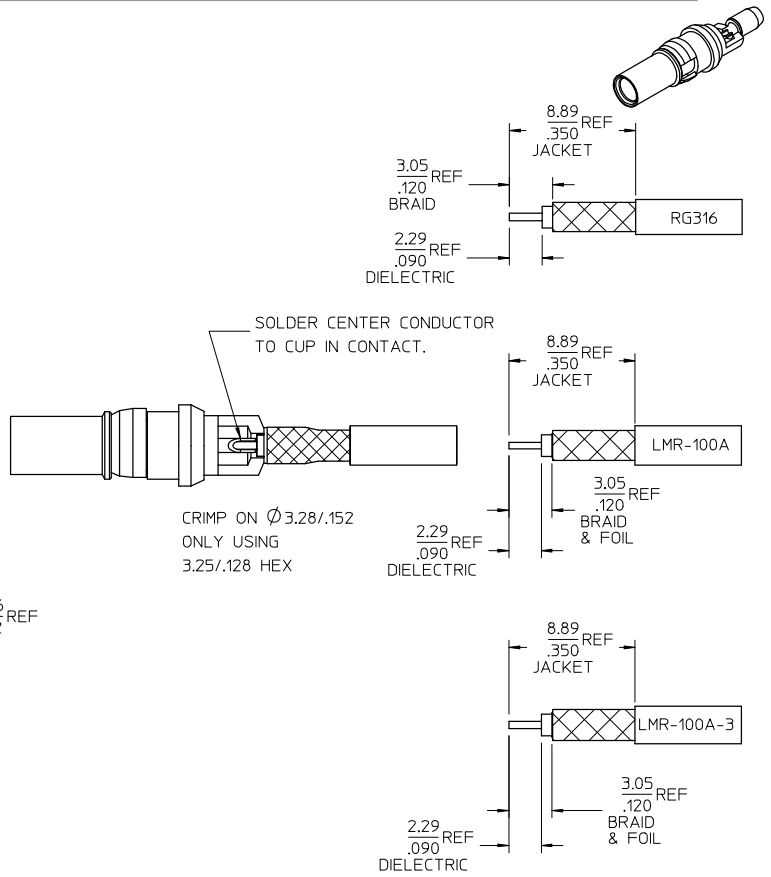
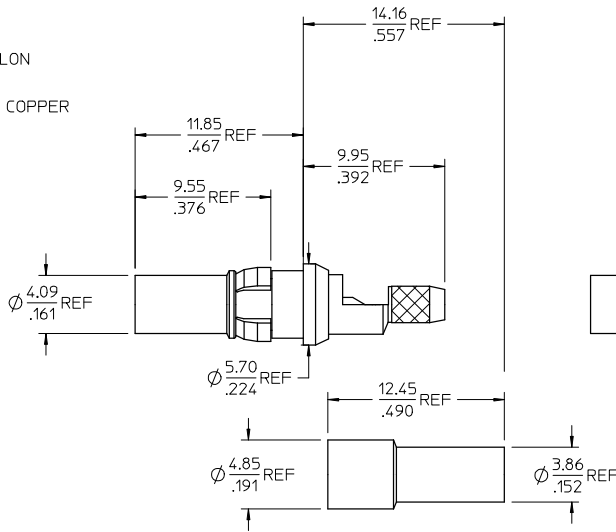
MATERIALS AND FINISHES

BODY, CRIMP TUBE: BRASS
PLATED GOLD

CONTACT: BERYLLIUM COPPER
PLATED GOLD

INSULATOR: TEFLON

CLIP: BERYLLIUM COPPER
PLATED NICKEL



PART # 73174-0270

PS-89675-3450	ELEC/MECH PERFORMANCE
DIN-41626	INTERFACE
SPECIFICATION	DESCRIPTION

CHG: RELEASE DRAWING EC NO: URF2008-0416 DRW: ANDREWS 2008/02/11 CHK: S. SHAH 2008/02/11 APPR: J. WENNER 2008/02/11 A	QUALITY SYMBOLS	GENERAL TOLERANCES (UNLESS SPECIFIED)	DIMENSION STYLE	SCALE	DESIGN UNITS	THIRD ANGLE PROJECTION
	▼=0 ▽=0	mm INCH 4 PLACES ± --- ± --- 3 PLACES ± --- ± --- 2 PLACES ± --- ± --- 1 PLACE ± --- ± --- ANGULAR ± 2°	MM/IN		METRIC	
			DRAWN BY DATE	TITLE	DIN 41626 JACK, 50 OHM RG316, LMR100A, LMR100A3 10/23-JC, EWR-3224	
			CHECKED BY DATE	APPROVED BY DATE	MOLEX INCORPORATED MOLEX INCORPORATED	
			MATERIAL NO.	DOCUMENT NO.	SHEET NO.	
		DRAFT WHERE APPLICABLE MUST REMAIN WITHIN DIMENSIONS	731740270	SD-73174-027	1 OF 1	
			THIS DRAWING CONTAINS INFORMATION THAT IS PROPRIETARY TO MOLEX INCORPORATED AND SHOULD NOT BE USED WITHOUT WRITTEN PERMISSION			