

Excellent Integrated System Limited

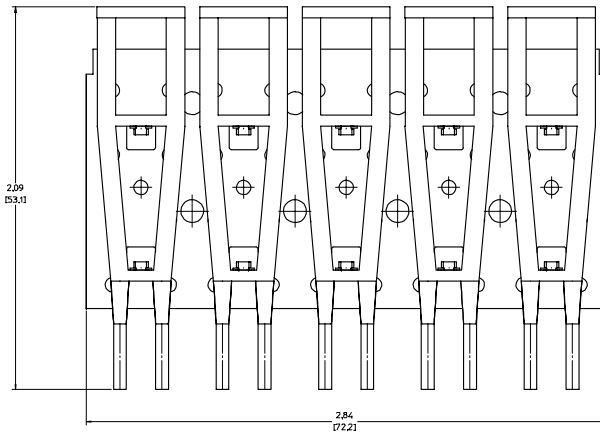
Stocking Distributor

Click to view price, real time Inventory, Delivery & Lifecycle Information:

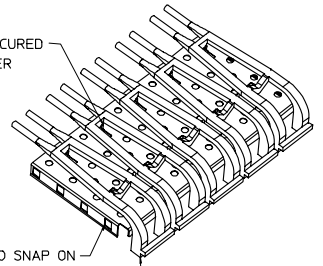
[Molex Connector Corporation](#)
[0747290001](#)

For any questions, you can email us directly:

sales@integrated-circuit.com

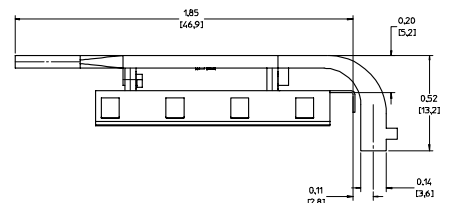
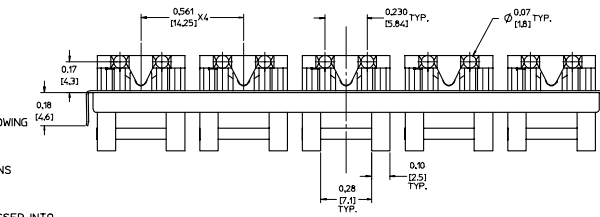


LIGHT PIPES SECURED TO METAL COVER



COVER DESIGNED TO SNAP ON THE SFP CAGE ASSEMBLY

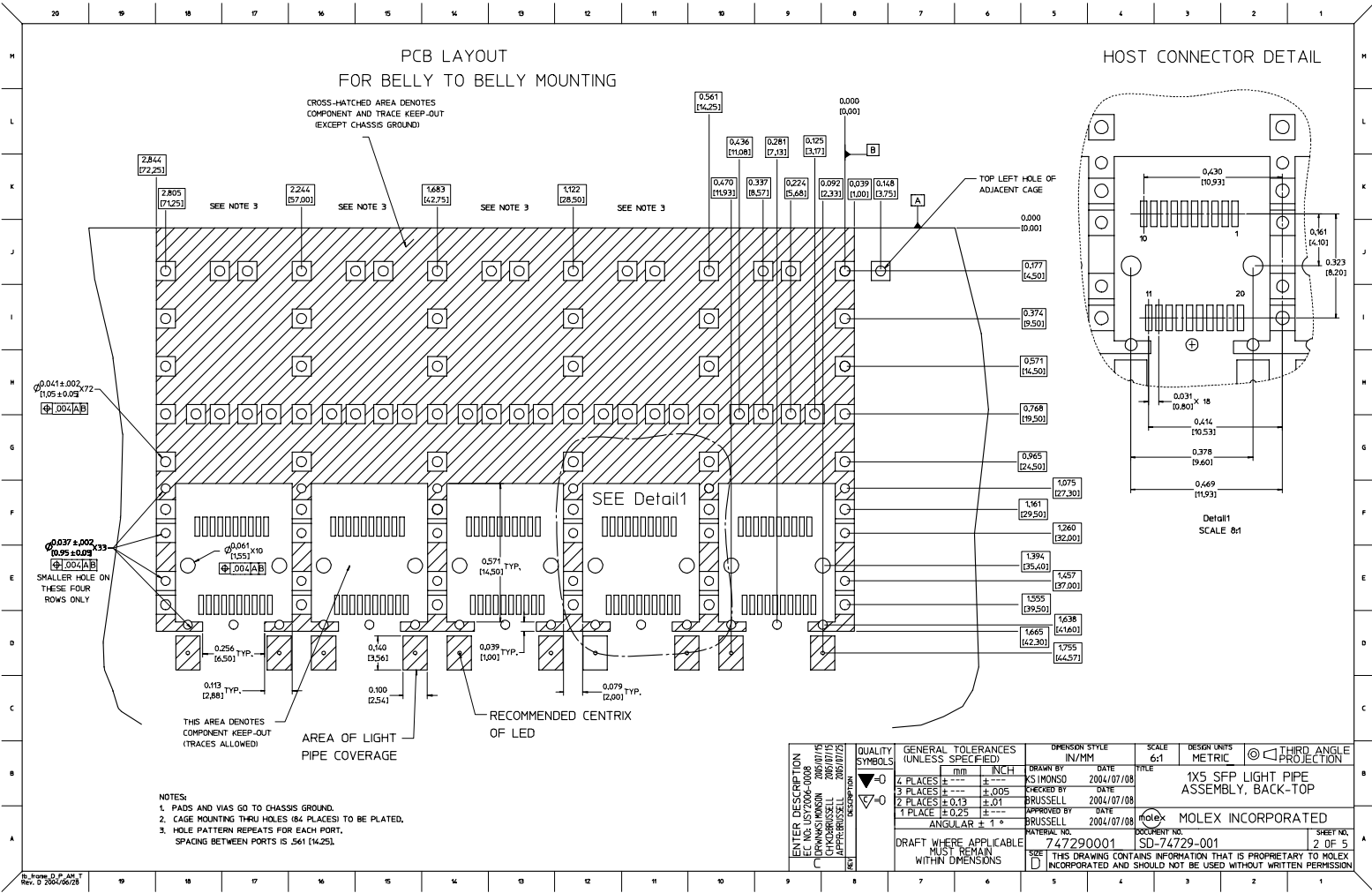
LIGHT PIPES MOLDED WITH V0 RATED MATERIAL



NOTES:

1. THIS LIGHT PIPE ASSEMBLY TO BE USED WITH THE FOLLOWING 1X5 SFP CAGE ASSEMBLIES:
747230001 - 1X5 SFP CAGE ASSEMBLY W/ PRESS FIT PINS (REFER TO DOCUMENT SD-74723-001)
2. IT IS RECOMMENDED THAT THE CAGE ASSEMBLY BE PRESSED INTO THE PCB PRIOR TO ASSEMBLING THE LIGHT PIPE ASSEMBLY.
3. LED'S TO HAVE A MAXIMUM HEIGHT OF 1.4mm AND A MINIMUM HEIGHT OF 0.7mm.
4. RECOMMENDED LED'S INCLUDE THE FOLLOWING MANUFACTURERS:
DIALIGHT: 597-77x1-5xx SERIES
CHICAGO MINIATURE: 7016 SERIES
KINGBRIGHT: APBL3025 SERIES (BICOLOR)
APL3015 SERIES (SINGLE COLOR)
5. THIS PART MEETS THE RESTRICTION OF HAZARDOUS SUBSTANCES IN ELECTRICAL AND ELECTRONIC EQUIPMENT (ROHS) DIRECTIVE (2002/95/EC).

ENTER DESCRIPTION E.C. NO. 0747290001 DRAWN BY APPROVED BY DATE 2004/07/08 2004/07/08 2004/07/08	QUALITY SYMBOLS ▽=0 ▽=0	GENERAL TOLERANCES (UNLESS SPECIFIED)		DIMENSION STYLE IN/MM	SCALE 4:1	DESIGN UNITS METRIC	THIRD ANGLE PROJECTION
		4 PLACES ± 0.13 3 PLACES ± 0.05 2 PLACES ± 0.01 1 PLACE ± 0.25 ANGULAR ± 1°	4 PLACES ± 0.005 3 PLACES ± 0.005 2 PLACES ± 0.01 1 PLACE ± 0.25 ANGULAR ± 1°	DRAWN BY XS MONSO DATE 2004/07/08	CHECKED BY BRUSSELL DATE 2004/07/08	APPROVED BY BRUSSELL DATE 2004/07/08	TITLE 1X5 SFP LIGHT PIPE ASSEMBLY, BACK-TOP
DRAFT WHERE APPLICABLE MUST REMAIN WITHIN DIMENSIONS	MATERIAL NO. 747290001	DOCUMENT NO. SD-74729-001	SHEET NO. 1 OF 5				



PCB LAYOUT
FOR SINGLE SIDE MOUNTING

CROSS-HATCHED AREA DENOTES
COMPONENT AND TRACE KEEP-OUT
(EXCEPT CHASSIS GROUND)

$\phi 0.041$
[1.05]^{+0.004}
[0.100]

THIS AREA DENOTES
COMPONENT KEEP-OUT
(TRACES ALLOWED)

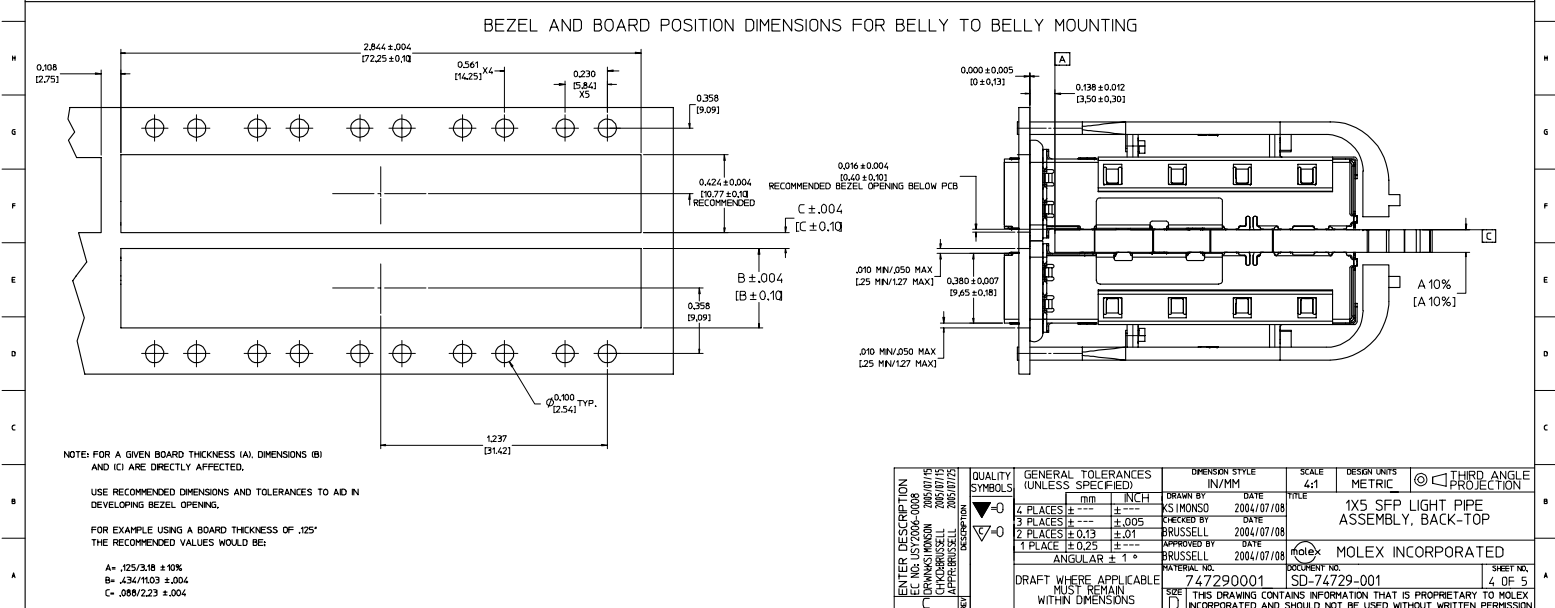
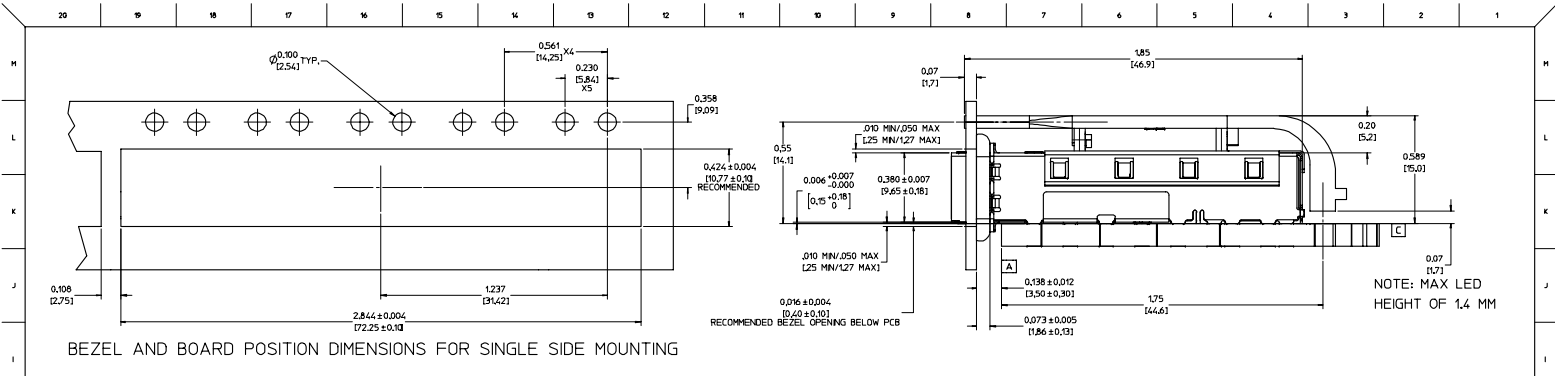
$\phi 0.037$
[0.95]^{+0.002}
[0.076]

SMALLER HOLE ON
THESE FOUR ROWS ONLY

NOTES:

1. PADS AND WAS GO TO CHASSIS GROUND.
2. CASE MOUNTING THRU HOLES (42 PLACES) TO BE PLATED.
3. HOLE PATTERN REPEATS FOR EACH PORT.
SPACING BETWEEN PORTS IS .561 [14.25].

ENTER DESCRIPTION E.C. NO. USY2006-0008 DRAWN BY: KX MONSO DATE: 2004/07/08 CHECKED BY: BRUSSELL DATE: 2004/07/08 APPROVED BY: BRUSSELL DATE: 2004/07/08	QUALITY SYMBOLS ▽=0 ▽=0	GENERAL TOLERANCES (UNLESS SPECIFIED)		DRIVEN STYLE IN/MM	SCALE 6:1	DESIGN UNITS METRIC	THIRDO ANGLE PROJECTION
		4 PLACES ± .010 3 PLACES ± .005 2 PLACES ± 0.13 1 PLACE ± 0.25 ANGULAR ± 1°	4 PLACES ± .0004 3 PLACES ± .0004 2 PLACES ± .0004 1 PLACE ± .0004 ANGULAR ± 1°	DRAWN BY: KX MONSO DATE: 2004/07/08	CHECKED BY: BRUSSELL DATE: 2004/07/08	FILE: 1X5 SFP LIGHT PIPE ASSEMBLY, BACK-TOP	MOLEX INCORPORATED
DRAFT WHERE APPLICABLE MUST REMAIN WITHIN DIMENSIONS		MATERIAL NO. 747290001	DOCUMENT NO. SD-74729-001	SET THIS DRAWING CONTAINS INFORMATION THAT IS PROPRIETARY TO MOLEX INCORPORATED AND SHOULD NOT BE USED WITHOUT WRITTEN PERMISSION			



NOTE: FOR A GIVEN BOARD THICKNESS (A), DIMENSIONS (B) AND (C) ARE DIRECTLY AFFECTED.
 USE RECOMMENDED DIMENSIONS AND TOLERANCES TO AID IN DEVELOPING BEZEL OPENING.
 FOR EXAMPLE USING A BOARD THICKNESS OF .105" THE RECOMMENDED VALUES WOULD BE:
 A = .125/3.18 ± 10%
 B = .434/11.03 ± .004
 C = .088/2.23 ± .004

ENTER DESCRIPTION ELEC. NO. UST2006-0008 DRAWN BY MONSON CHECKED BY BRUSSELL APPROVED BY BRUSSELL DATE 2004/07/08 DATE 2004/07/08 DATE 2004/07/08	QUALITY SYMBOLS	GENERAL TOLERANCES (UNLESS SPECIFIED)	DIMENSION STYLE	SCALE	DESIGN UNITS	THIRD ANGLE PROJECTION	
	▽=0 ▽=0	4 PLACES ± --- ± --- 3 PLACES ± --- ± --- 2 PLACES ± 0.13 ± .01 1 PLACE ± 0.25 ± --- ANGULAR ± 1°	IN/MM 4:1	METRIC	1X5 SFP LIGHT PIPE ASSEMBLY, BACK-TOP	THIRD ANGLE PROJECTION	
	MATERIAL NO. 747290001 DOCUMENT NO. SD-74729-001	DRAFT WHERE APPLICABLE MUST REMAIN WITHIN DIMENSIONS	DRAWN BY KS MONSON CHECKED BY BRUSSELL APPROVED BY BRUSSELL DATE 2004/07/08 DATE 2004/07/08 DATE 2004/07/08	MOLEX INCORPORATED	SHEET NO. 4 OF 5	SET THIS DRAWING CONTAINS INFORMATION THAT IS PROPRIETARY TO MOLEX INCORPORATED AND SHOULD NOT BE USED WITHOUT WRITTEN PERMISSION	MOLEX INCORPORATED
	REVISIONS: 1 DESCRIPTION:						

DATE	REV	CHANGES	COMMENTS
2004/07/08	A	INITIAL RELEASE	N/A
2005/06/03	B	CORRECTED P/N FOR DIALIGHT LED	DOCUMENT CHANGE ONLY
2005/06/10	C	UPDATED VIEWS TO SHOW CLEARANCE HOLES ADDED TO THE COVER	N/A

ENTER DESCRIPTION E.C. NO. US72006-0008 DRAWN BY MONSO 2004/07/08 CHECKED BY BRUSSELL 2004/07/08 APPROVED BY BRUSSELL 2004/07/08 PART DESCRIPTION	QUALITY SYMBOLS	GENERAL TOLERANCES (UNLESS SPECIFIED)	DIMENSION STYLE IN/MM	SCALE 1:1	DESIGN UNITS METRIC	THIRD ANGLE PROJECTION																		
	▽=0 ▽=0	<table border="1"> <thead> <tr> <th></th> <th>MILL</th> <th>INCH</th> </tr> </thead> <tbody> <tr> <td>4 PLACES ± ---</td> <td>± ---</td> <td>± ---</td> </tr> <tr> <td>3 PLACES ± ---</td> <td>± .005</td> <td></td> </tr> <tr> <td>2 PLACES ± 0.13</td> <td>± .01</td> <td></td> </tr> <tr> <td>1 PLACE ± 0.25</td> <td>± ---</td> <td></td> </tr> <tr> <td>ANGULAR ± 1°</td> <td></td> <td></td> </tr> </tbody> </table>		MILL	INCH	4 PLACES ± ---	± ---	± ---	3 PLACES ± ---	± .005		2 PLACES ± 0.13	± .01		1 PLACE ± 0.25	± ---		ANGULAR ± 1°			DRAWN BY DATE KS MONSO 2004/07/08 CHECKED BY DATE BRUSSELL 2004/07/08 APPROVED BY DATE BRUSSELL 2004/07/08	TITLE 1X5 SFP LIGHT PIPE ASSEMBLY, BACK-TOP	MATERIAL NO. 747290001	DOCUMENT NO. SD-74729-001
	MILL	INCH																						
4 PLACES ± ---	± ---	± ---																						
3 PLACES ± ---	± .005																							
2 PLACES ± 0.13	± .01																							
1 PLACE ± 0.25	± ---																							
ANGULAR ± 1°																								