

Excellent Integrated System Limited

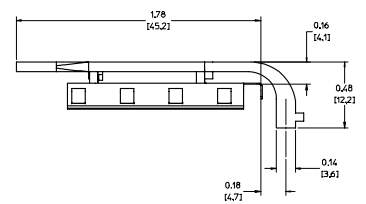
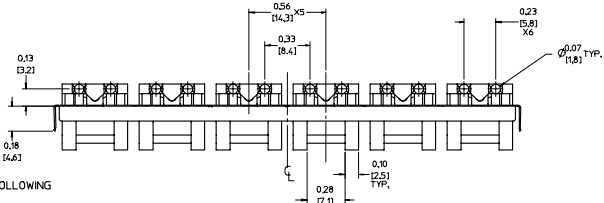
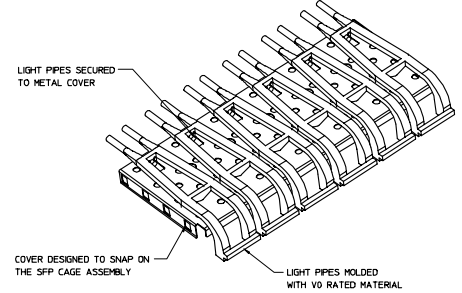
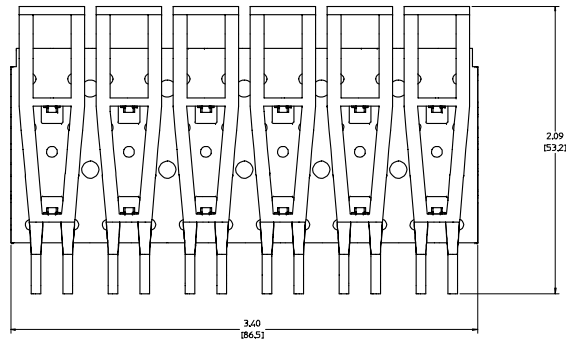
Stocking Distributor

Click to view price, real time Inventory, Delivery & Lifecycle Information:

[Molex Connector Corporation](#)
[0747480002](#)

For any questions, you can email us directly:

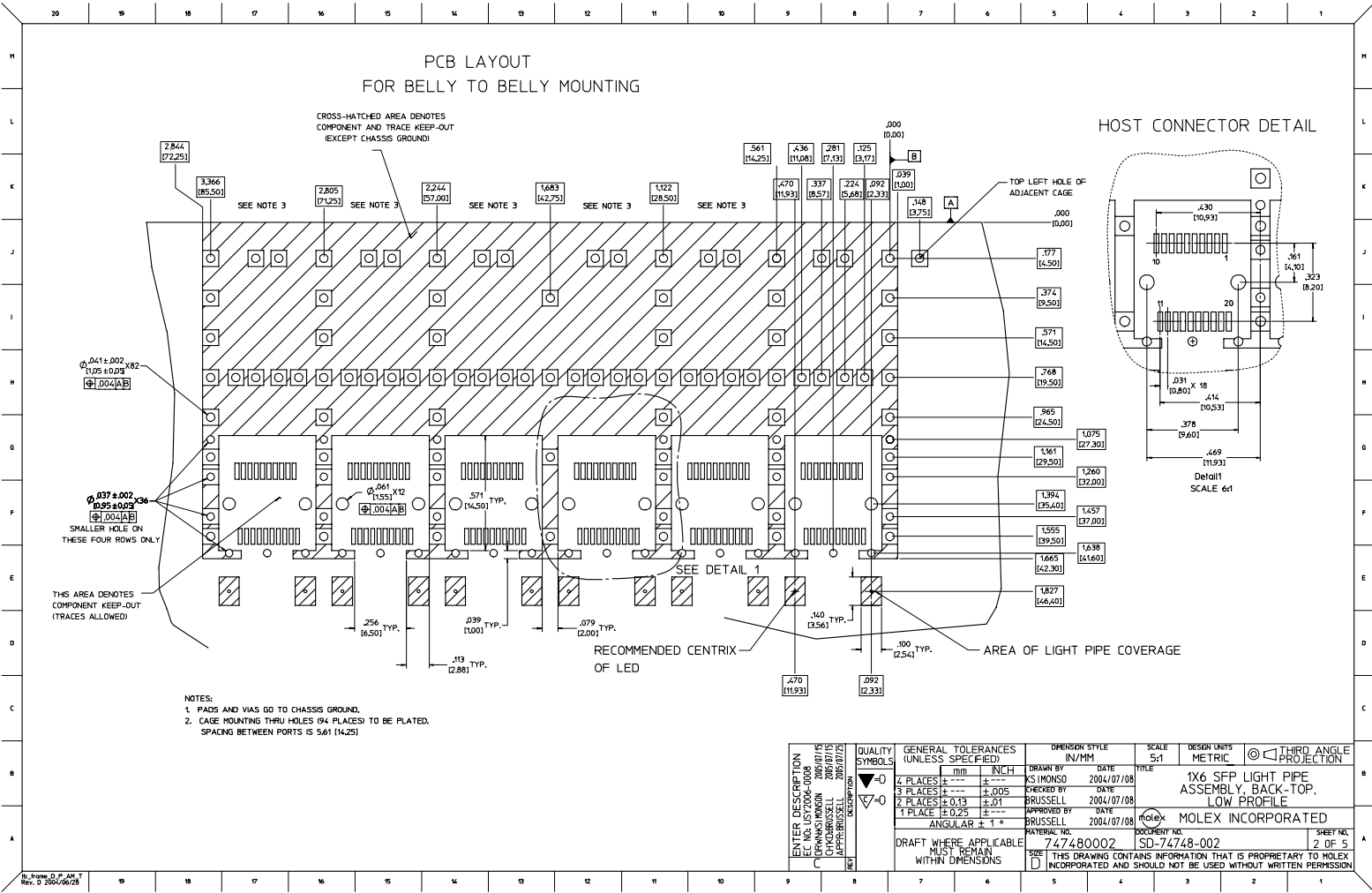
sales@integrated-circuit.com



NOTES:

- THIS LIGHT PIPE ASSEMBLY TO BE USED WITH THE FOLLOWING 1X6 SFP CAGE ASSEMBLIES:
 747470001 - 1X6 SFP CAGE ASSEMBLY, W/ PRESS FIT PINS, W/ 0.090 GASKET (REFER TO DOCUMENT SD-74747-001)
 747470003 - 1X6 SFP CAGE ASSEMBLY, W/ SPRING FINGER GASKET, (REFER TO DOCUMENT SD-74747-003)
- IT IS RECOMMENDED THAT THE CAGE ASSEMBLY BE PRESSED INTO THE PCB PRIOR TO ASSEMBLING THE LIGHT PIPE ASSEMBLY.
- LED'S TO HAVE A MAXIMUM HEIGHT OF 1.4mm AND A MINIMUM HEIGHT OF 0.7mm.
- RECOMMENDED LED'S INCLUDE THE FOLLOWING MANUFACTURERS:
 DIALIGHT: 597-77x1-5xx SERIES
 CHICAGO MINIATURE: 7016 SERIES
 KINGBRIGHT: APBL3025 SERIES (BICOLOR)
 APL3015 SERIES (SINGLE COLOR)
- THIS PART MEETS THE RESTRICTION OF HAZARDOUS SUBSTANCES IN ELECTRICAL AND ELECTRONIC EQUIPMENT (ROHS) DIRECTIVE (2002/95/EC).

ENTER DESCRIPTION ELEC. NO. LSTY2006-0008 DRAWN BY: MINDON 2006/07/08 CHECKED BY: BRUSSELL 2006/07/08 APPROVED BY: BRUSSELL 2006/07/08 DATE: 2006/07/08	QUALITY SYMBOLS ▽=0 ▽=0	GENERAL TOLERANCES (UNLESS SPECIFIED)		DIMENSION STYLE		SCALE	DESIGN UNITS	THIRD ANGLE PROJECTION
		4 PLACES ± --- ± --- 3 PLACES ± --- ± 0.05 2 PLACES ± 0.13 ± 0.01 1 PLACE ± 0.25 ± --- ANGULAR ± 1°	INCH INCH INCH INCH	IN/MM IN/MM IN/MM IN/MM	3:1	METRIC	THIRD ANGLE PROJECTION 1X6 SFP LIGHT PIPE ASSEMBLY, BACK-TOP, LOW PROFILE MOLEX INCORPORATED	
DRAFT WHERE APPLICABLE MUST REMAIN WITHIN DIMENSIONS		MATERIAL NO. 747480002 DOCUMENT NO. SD-74748-002		MOLEX INCORPORATED		SHEET NO. 1 OF 5		



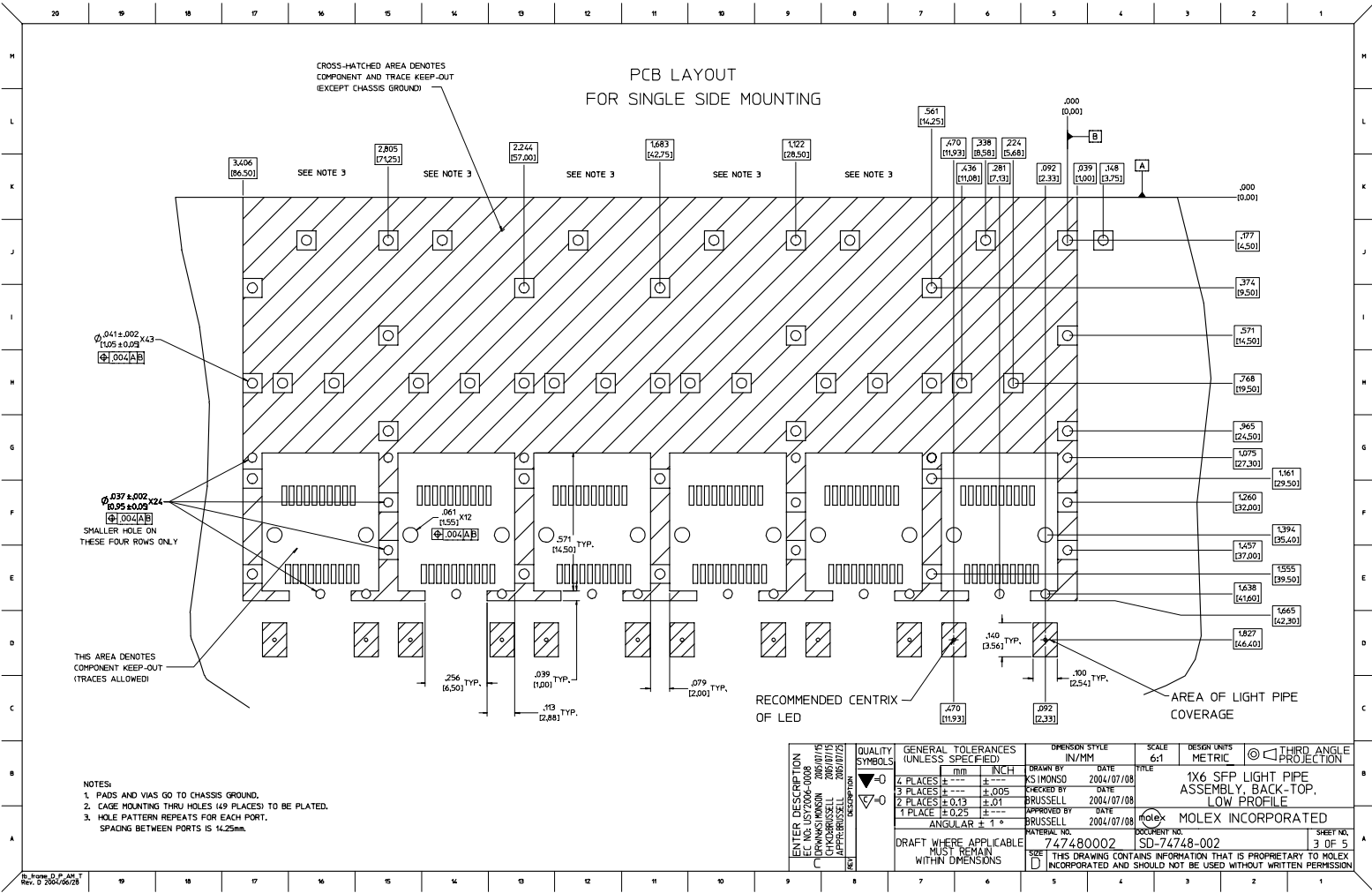
PCB LAYOUT
FOR BELLY TO BELLY MOUNTING

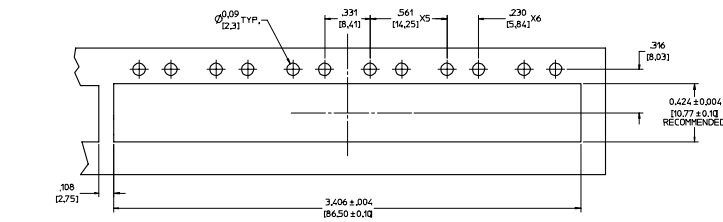
CROSS-HATCHED AREA DENOTES
COMPONENT AND TRACE KEEP-OUT
(EXCEPT CHASSIS GROUND)

HOST CONNECTOR DETAIL

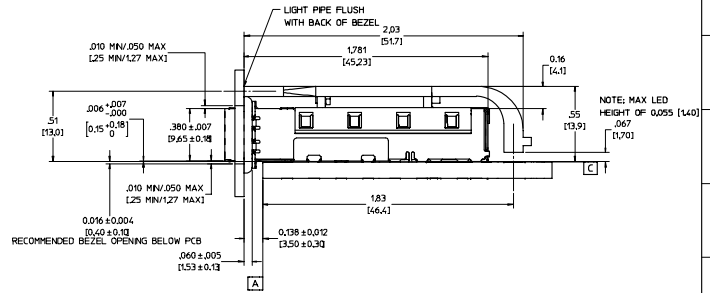
- NOTES:
1. PADS AND VIAS GO TO CHASSIS GROUND.
2. CAGE MOUNTING THRU HOLES (94 PLACES) TO BE PLATED.
SPACING BETWEEN PORTS IS 5.61 (14.25)

ENTER DESCRIPTION E.C. NO. UST2006-0008 DRAWN BY MONSON DATE 2006/07/08 CHECKED BY BRUSSELL DATE 2006/07/08 APPROVED BY BRUSSELL DATE 2006/07/08	QUALITY SYMBOLS ▽=0 ▽=0	GENERAL TOLERANCES (UNLESS SPECIFIED)		DIMENSION STYLE IN/MM	SCALE 5:1	DESIGN UNITS METRIC	THIRD ANGLE PROJECTION
		PLACES	TOLERANCE				
4 PLACES	± .01	± .005					
3 PLACES	± .01	± .005					
2 PLACES	± 0.13	± .01					
1 PLACE	± 0.25	± .01					
		ANGULAR ± 1°					
DRAFT WHERE APPLICABLE MUST REMAIN WITHIN DIMENSIONS		MATERIAL NO. 747480002		DOCUMENT NO. SD-74748-002		SHEET NO. 2 OF 5	
SEE THIS DRAWING CONTAINS INFORMATION THAT IS PROPRIETARY TO MOLEX INCORPORATED AND SHOULD NOT BE USED WITHOUT WRITTEN PERMISSION							

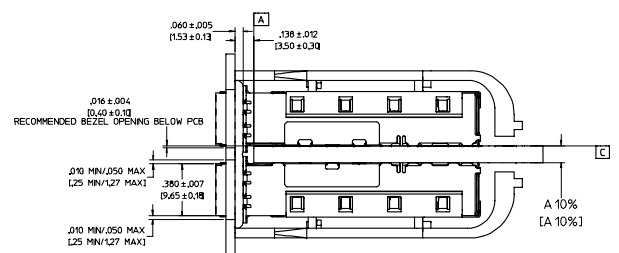
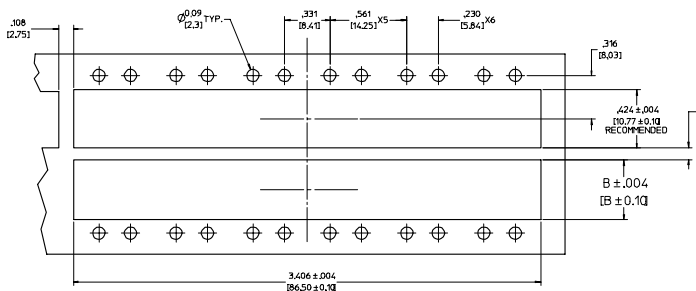




BEZEL AND BOARD POSITION DIMENSIONS FOR SINGLE SIDE MOUNTING



BEZEL AND BOARD POSITION DIMENSIONS FOR BELLY TO BELLY MOUNTING



NOTE: FOR A GIVEN BOARD THICKNESS (A), DIMENSIONS (B) AND (C) ARE DIRECTLY AFFECTED.
USE RECOMMENDED DIMENSIONS AND TOLERANCES TO AID IN DEVELOPING BEZEL OPENING.
FOR EXAMPLE USING A BOARD THICKNESS OF .125" THE RECOMMENDED VALUES WOULD BE:
A = .125/3.18 ± 10%
B = .434/11.03 ± .004
C = .088/2.23 ± .004

ENTER DESCRIPTION E.C. NO. U572006-0008 DRAWN BY KSPRINSON CHECKED BY BRUSSELL APPROVED BY BRUSSELL DATE 2004/07/08 2004/07/08 2004/07/08	QUALITY SYMBOLS ▽=0 ▽=0	GENERAL TOLERANCES (UNLESS SPECIFIED)		DRAGON STYLE	SCALE	DESIGN UNITS	THIRD ANGLE PROJECTION
		4 PLACES ± .005	3 PLACES ± .010	2 PLACES ± 0.13	1 PLACE ± 0.25	IN/MM	4:1
DRAFT WHERE APPLICABLE (MUST) REMAIN WITHIN DIMENSIONS		MATERIAL NO. 747480002		DOCUMENT NO. SD-74748-002		SHEET NO. 4 OF 5	
THIS DRAWING CONTAINS INFORMATION THAT IS PROPRIETARY TO MOLEX INCORPORATED AND SHOULD NOT BE USED WITHOUT WRITTEN PERMISSION							

DATE	REV	CHANGES	COMMENTS
2004/04/15	1	PRELIMINARY DOCUMENT	N/A
2004/07/08	A	INITIAL RELEASE	N/A
2005/06/03	B	CORRECTED P/N FOR DIALIGHT LED	DOCUMENT CHANGE ONLY
2005/06/10	C	UPDATED VIEWS TO SHOW CLEARANCE HOLES ADDED TO THE COVER	N/A

ENTER DESCRIPTION EIC NO: 0747480002 DRAWN BY: K. MONSO CHECKED BY: BRUSSELL APPROVED BY: BRUSSELL DATE: 2004/07/08	QUALITY SYMBOLS ▽=0 ▽=0	GENERAL TOLERANCES (UNLESS SPECIFIED)		DIMENSION STYLE IN/MM	SCALE 1:1	DESIGN UNITS METRIC	THIRD ANGLE PROJECTION
		4 PLACES ± --- ± --- 3 PLACES ± --- ±.005 2 PLACES ± 0.13 ±.01 1 PLACE ± 0.25 ± --- ANGULAR ± 1°	DRAWN BY: K. MONSO CHECKED BY: BRUSSELL APPROVED BY: BRUSSELL DATE: 2004/07/08	DATE: 2004/07/08	TITLE: 1X6 SFP LIGHT PIPE ASSEMBLY, BACK-TOP, LOW PROFILE	MATERIAL NO.: 747480002 DOCUMENT NO.: SD-74748-002	MOLEX INCORPORATED
DRAFT WHERE APPLICABLE MUST REMAIN WITHIN DIMENSIONS		SET THIS DRAWING CONTAINS INFORMATION THAT IS PROPRIETARY TO MOLEX INCORPORATED AND SHOULD NOT BE USED WITHOUT WRITTEN PERMISSION					