

## Excellent Integrated System Limited

Stocking Distributor

Click to view price, real time Inventory, Delivery & Lifecycle Information:

[Molex Connector Corporation](#)  
[0751152028](#)

For any questions, you can email us directly:

[sales@integrated-circuit.com](mailto:sales@integrated-circuit.com)

CKT SIZE	*A* DIM	*B* DIM	*C* DIM	*D* DIM	*E* DIM	CABLE OD
18	1.320/33.55	.691/17.56	.950/24.13	1.835/46.62	.490/12.45	.310/7.87
28	1.570/39.90	.941/23.91	1.200/30.48	1.835/46.62	.490/12.45	.335/8.51
38	1.820/46.25	1.191/30.26	1.450/36.83	2.270/57.65	.490/12.45	.355/9.02
48	2.070/52.60	1.441/36.61	1.700/43.18	2.478/62.93	.569/14.45	.440/11.18
72	2.670/67.84	2.041/51.85	2.300/58.42	2.741/69.62	.726/18.45	.635/16.13

NOTES:

1. MATERIALS:

BACKSHELL - ZINC ALLOY DIE CAST, FINISH DULL NICKEL PLATING.

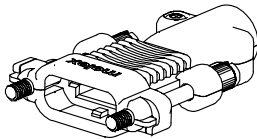
JACKSCREW - STAINLESS STEEL, FINISH PASSIVATE.

MOUNTING SCREW - STEEL ALLOY, FINISH CLEAR ZINC PLATING.

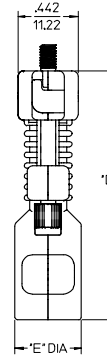
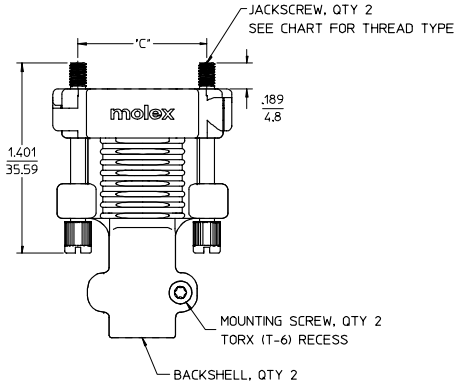
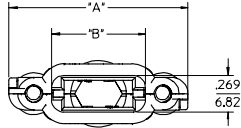
2. PLUG CABLE KIT COMPONENTS TO BE BULK PACKAGED PER PK-75115-991.

3. MOUNTING SCREW APPLICATION TORQUE TO BE MIN. 3 lbf-in AND NOT TO EXCEED 4 lbf-in.

5. STRAIN RELIEF IS DESIGNED FOR THE CABLE DIAMETER SPECIFIED IN TABLE ON THIS PAGE. WHEN USING SMALLER CABLE DIAMETER, USE HEAT SHRINK TUBING TO BUILD UP THE CABLE TO THE SPECIFIED DIAMETER.



18 CKT PLUG CABLE KIT



75115-2072	75115-3072	72	X	CONTACT PRODUCT MARKETING
75115-2048	75115-3048	48		
75115-2038	75115-3038	38	X	CONTACT PRODUCT MARKETING
75115-2028	75115-3028	28		
75115-2018	75115-3018	18		
PLUG CABLE KIT (4-40 JACKSCREW)	PLUG CABLE KIT (M3 JACKSCREW)	CIRCUIT SIZE	NOT TOOLED	

MOD. JACKSCREW MATERIAL EC NO: UCP 2007-1309 DRW: MSBARRAZ2007/02/27 CHKD: DMORGAN2007/03/05 APPR: SMILLER 2007/03/06	QUALITY SYMBOLS ◻ 0 ◻ 0	GENERAL TOLERANCES (UNLESS SPECIFIED) 4 PLACES ± --- ± --- 3 PLACES ± --- ± .010 2 PLACES ± 0.25 ± --- 1 PLACE ± --- ± --- ANGULAR ± 1/2°	SCALE 2:1 DESIGN UNITS METRIC DIMENSION STYLE IN/MM	THIRD ANGLE PROJECTION REVISE ON CAD ONLY
		DRAFT WHERE APPLICABLE MUST REMAIN WITHIN DIMENSIONS	DRAWN BY DATE TMCCLELL 02/11/06 CHECKED BY DATE TMCCLELL 02/11/07 APPROVED BY DATE BANAKIS 02/11/07	TITLE SALES DRAWING TDP PLUG CABLE KIT DULL NICKEL FINISH MOLEX INCORPORATED MATERIAL NO. SEE CHART DOCUMENT NO. SD-75115-002 SHEET NO. 1 OF 1