

Excellent Integrated System Limited

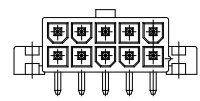
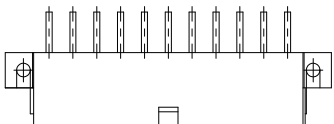
Stocking Distributor

Click to view price, real time Inventory, Delivery & Lifecycle Information:

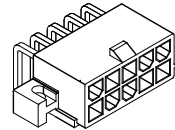
[Molex Connector Corporation](#)
[0874271012](#)

For any questions, you can email us directly:

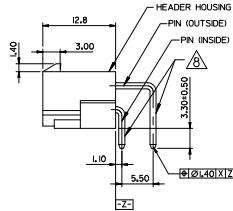
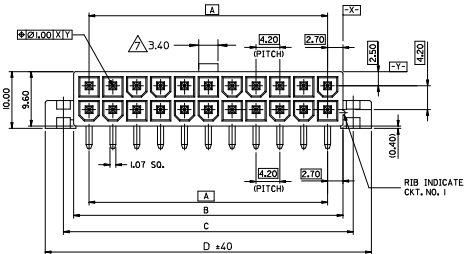
sales@integrated-circuit.com



CKT. SIZE 10



ISOMETRIC VIEW



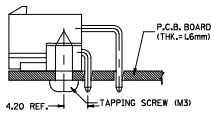
LEGEND

87427-****
CKT. SIZE (SEE SHEET 2) PLATING OPTIONS
2 = NOTE

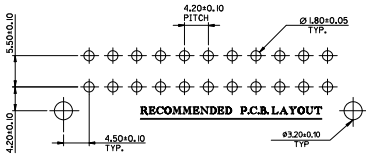
PACKAGING OPTIONS
1 = TRAY PACKED - COLOR: BEIGE

NOTES

- MATERIALS:
- HEADER: NYLON 46, UL94V-0, COLOR SEE LEGEND.
- PIN: BRASS
- FINISH- PLATING OF PIN:
△ .00254 MIN. MATTE TIN OVER .00127 MIN. NICKEL
- PRODUCT SPECIFICATION: PS-87427-0001.
- PACKAGING SPECIFICATION:
TRAY PACK PER PK-87427-003.
- MATES WITH: MINI-FIT JR. RECEPTACLE SERIES 5557.
- THESE PARTS CONFORM TO CLASS 'B' REQUIREMENTS OF COSMETIC SPECIFICATION PS-45499-002.
THIS DIMENSION IS 4.2 ON 2 CKT PARTS.
△ FORMING MARKS ARE ACCEPTABLE
- DISCOLORATION IN THE BANDOLIER CARRIER AREA OF THE PIN IS INHERENT TO THE PLATING PROCESS AND IS DUE TO THE MASKING EFFECT OF THE CARRIER. THIS DISCOLORATION IS IN A NON-FUNCTIONAL AREA OF THE PIN AND WILL NOT AFFECT THE PERFORMANCE OF THE HEADER ASSEMBLY.
- PARTS ARE NOT DESIGNED FOR CURRENT SHARING.
- CONNECTORS ARE NOT TO BE MATED AND UNMATED WHILE CIRCUITS ARE LIVE.

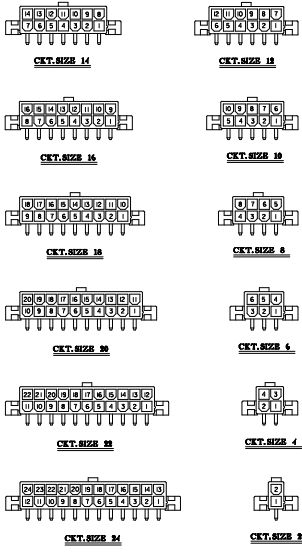


RECOMMENDED INSTALLATION PATTERN



RECOMMENDED P.C.B. LAYOUT

CHANGE PLATING EC NO: UCP2012-1560 DRAWN BY: NGUYEN CHKD: BELL APPR: SMITH	QUALITY SYMBOLS ▽=0 ▽=0 ▽=0	DESCRIPTION REV	GENERAL TOLERANCES (UNLESS SPECIFIED)		DIMENSION STYLE MM ONLY		SCALE 2:1	DESIGN UNITS METRIC	THIRD ANGLE PROJECTION
			mm	INCH	DRAWN BY STEVEN	DATE 1994/06/24	TITLE 4.2MM W-T-B RIGHT ANGLE HEADER (WITH MOUNTING FLANGES)		
			4 PLACES ±---	±---	CHECKED BY EDMUND	DATE 1995/03/01	MOLEX INCORPORATED		
			3 PLACES ±---	±---	APPROVED BY SMITH	DATE 2012/02/02	MATERIAL NO. DOCUMENT NO. SD-87427-***1*		
			DRAFT WHERE APPLICABLE MUST REMAIN WITHIN DIMENSIONS		SEE CHART		SHEET NO. 1 OF 2		
					THIS DRAWING CONTAINS INFORMATION THAT IS PROPRIETARY TO MOLEX INCORPORATED AND SHOULD NOT BE USED WITHOUT WRITTEN PERMISSION				



BEIGE					
D	C	B	A	ENGRD.	TRAY PACKED
61.60	55.20	51.60±0.55	46.20	87427-2412	24
57.40	51.00	47.40±0.55	42.00	87427-2212	22
53.20	46.80	43.20±0.50	37.80	87427-2012	20
49.00	42.60	39.00±0.45	33.60	87427-1812	18
44.80	38.40	34.80±0.35	29.40	87427-1612	16
40.60	34.20	30.60±0.30	25.20	87427-1412	14
36.40	30.00	26.40±0.30	21.00	87427-1212	12
32.20	25.80	22.20±0.30	16.80	87427-1012	10
28.00	21.60	18.00±0.30	12.60	87427-0812	8
23.80	17.40	13.80±0.25	8.40	87427-0612	6
19.60	13.20	9.60±0.25	4.20	87427-0412	4
15.40	9.00	5.40±0.20	--	87427-0212	2

SEE SHEET 1 EC NO: UCP2072-1560 DRAWING NO: 2012/0176 CHKD: BELL APPR: SMITH DATE: 2012/02/02	QUALITY SYMBOLS ∇=0 ∇=0 ∇=0	GENERAL TOLERANCES (UNLESS SPECIFIED)		DIMENSION STYLE MM ONLY		SCALE 1:1	DESIGN UNITS METRIC	THIRD ANGLE PROJECTION
		4 PLACES ±--- ±--- 3 PLACES ±--- ±--- 2 PLACES ±0.20 ±--- 1 PLACE ±0.20 ±--- ANGULAR ±---°	DRAWN BY STEVEN DATE 1994/06/24	CHECKED BY EDMUND DATE 1995/03/01	APPROVED BY F SMITH DATE 2012/02/02	MATERIAL NO.		DOCUMENT NO. SD-87427-**-1*
DRAFT WHERE APPLICABLE MUST REMAIN WITHIN DIMENSIONS			SEE CHART		THIS DRAWING CONTAINS INFORMATION THAT IS PROPRIETARY TO MOLEX INCORPORATED AND SHOULD NOT BE USED WITHOUT WRITTEN PERMISSION			