

Excellent Integrated System Limited

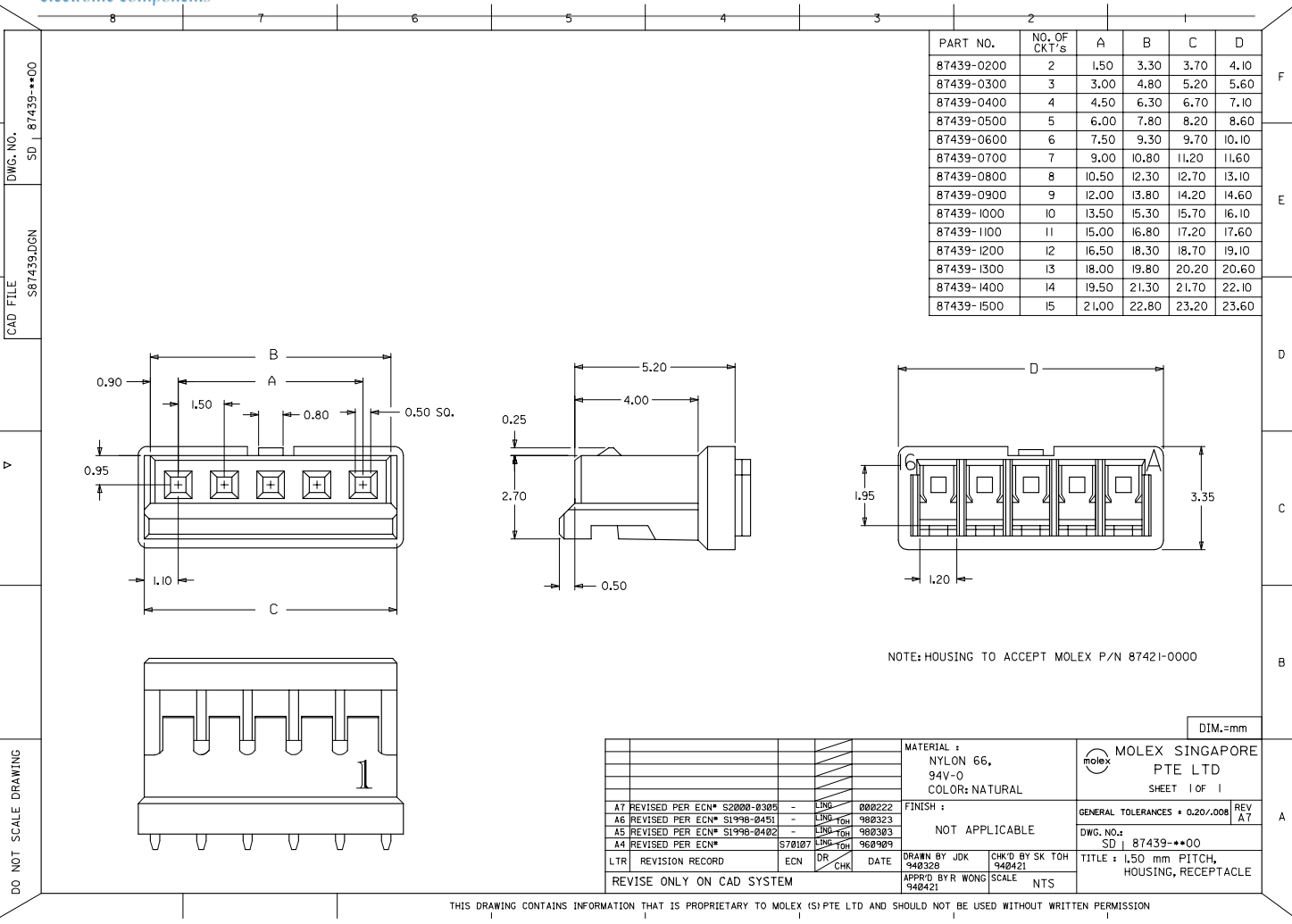
Stocking Distributor

Click to view price, real time Inventory, Delivery & Lifecycle Information:

[Molex Connector Corporation](#)
[0874390601](#)

For any questions, you can email us directly:

sales@integrated-circuit.com



DWG. NO. SD 87439-0000

CAD FILE S87439.DGN

V

DO NOT SCALE DRAWING

NOTE: HOUSING TO ACCEPT MOLEX P/N 87421-0000

DIM.=mm

				MATERIAL : NYLON 66, 94V-0 COLOR: NATURAL		MOLEX SINGAPORE PTE LTD SHEET 1 of 1	
				FINISH :		GENERAL TOLERANCES ± 0.20/008	
				NOT APPLICABLE		REV A7	
				DRAWN BY JDK 948328		DWG. NO. SD 1 87439-0000	
				CHK'D BY SK TOH 948421		TITLE : 1.50 mm PITCH, HOUSING, RECEPTACLE	
				APPR'D BYR WONG 948421		SCALE NTS	
LTR REVISION RECORD				ECN	DR	CHK	DATE
REVISE ONLY ON CAD SYSTEM							

THIS DRAWING CONTAINS INFORMATION THAT IS PROPRIETARY TO MOLEX (S) PTE LTD AND SHOULD NOT BE USED WITHOUT WRITTEN PERMISSION

A3 REVISED PER ECN*	S68591 LING TOH	968619
A2 REVISED PER ECN*	S68427 LING POH	968311
A1 REVISED PER ECN*	S58567 LING POH	958525
A REVISED PER ECN*	S58336 LING POH	958386
3 REVISED PER ECN*	S58886 LING POH	948914
2 REVISED PER ECN*	S48529 LING TOH	948512
1 PRELIMINARY RELEASE	S48488 JDK TOH	948328