

## Excellent Integrated System Limited

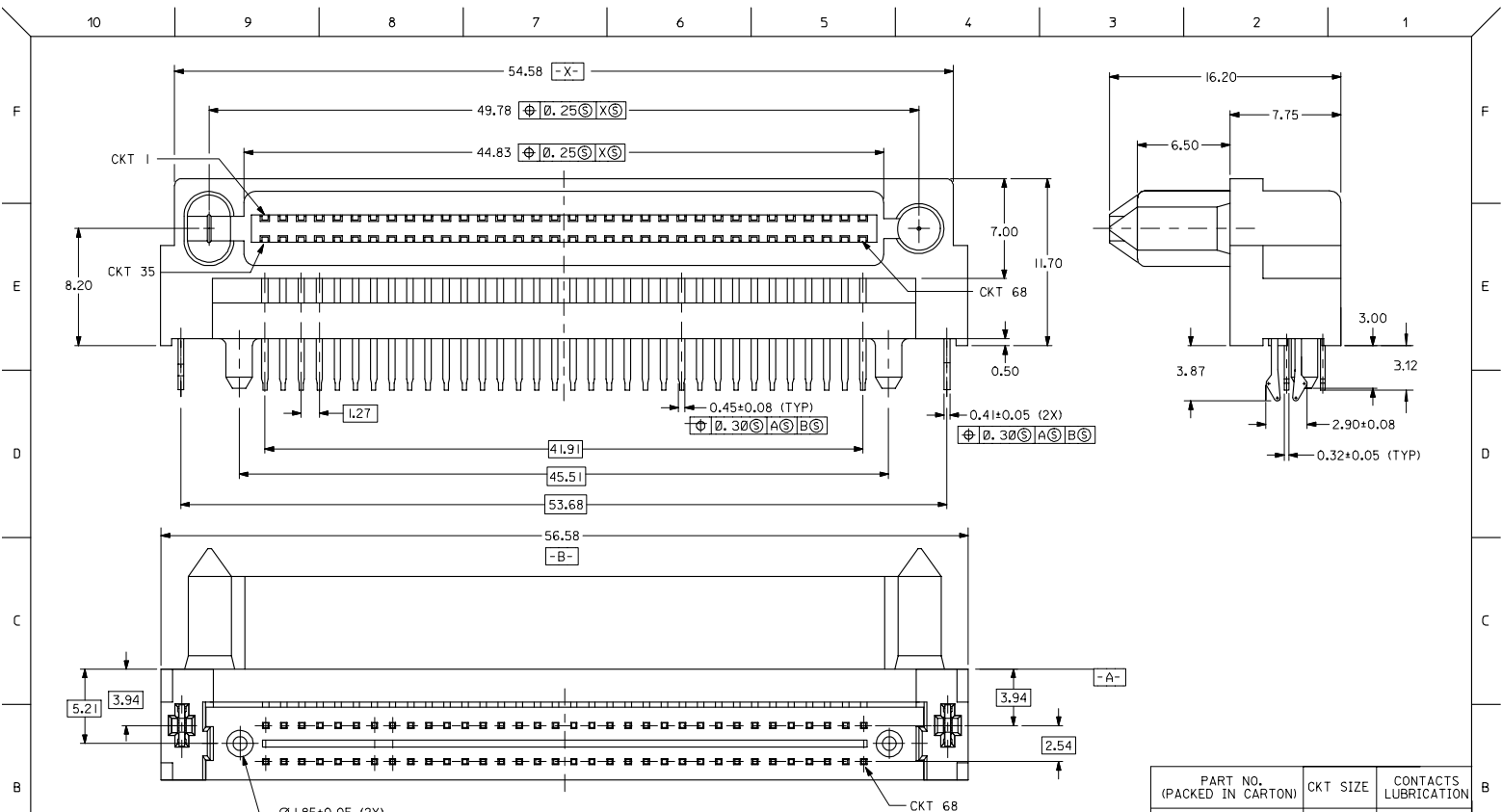
Stocking Distributor

Click to view price, real time Inventory, Delivery & Lifecycle Information:

[Molex Connector Corporation](#)  
[0875370100](#)

For any questions, you can email us directly:

[sales@integrated-circuit.com](mailto:sales@integrated-circuit.com)

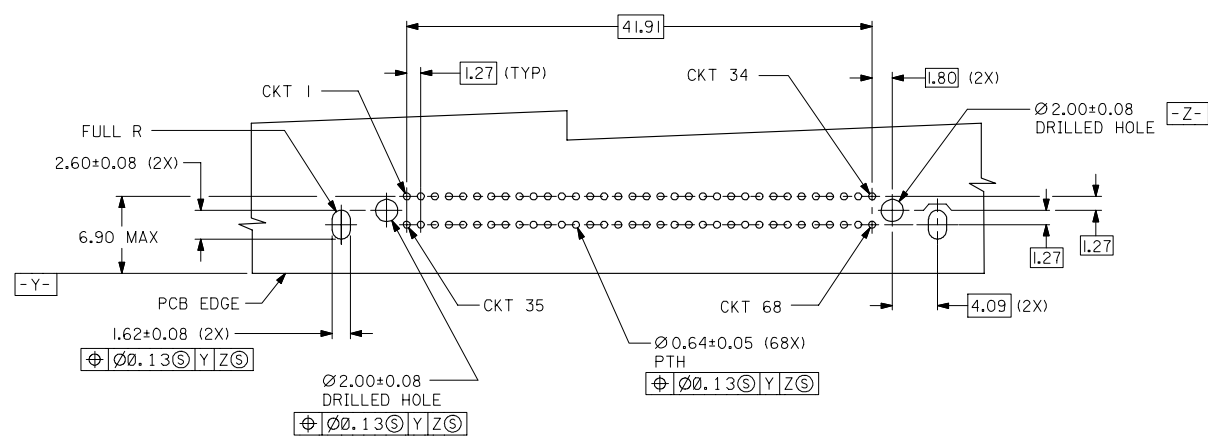


PART NO. (PACKED IN CARTON)	CKT SIZE	CONTACTS LUBRICATION
87537-0100	68	YES

ADD LUBRICATION EC NO: S2007-0048 DRAWN BY: URMWATSE CHK'D: SHONG APPROX. CLING: 2006/07/24 REV: B1	QUALITY SYMBOLS	GENERAL TOLERANCES (UNLESS SPECIFIED)	DIMENSION STYLE	SCALE	DESIGN UNITS	THIRD ANGLE PROJECTION
	$\nabla=0$ $\nabla=0$	4 PLACES ± --- ± --- 3 PLACES ± --- ± --- 2 PLACES ± 0.25 ± --- 1 PLACE ± --- ± --- ANGULAR ± 3 °	MM ONLY	NTS	METRIC	
		DRAFT WHERE APPLICABLE MUST REMAIN WITHIN DIMENSIONS	DRAWN BY: BBTAN CHECKED BY: CGTAN APPROVED BY: SHONG DATE: 2005/09/29 DATE: 2005/10/31 DATE: 2005/10/31			TITLE: EBB1, RECEPTACLE, CONN. 1.27MM CTR, 68 CKTS, R/A BLIND-MATE, 0.093 BRD MOLEX INCORPORATED
			MATERIAL NO. SEE TABLE DOCUMENT NO. SD-87537-100 SHEET NO. 1 OF 2			

10 9 8 7 6 5 4 3 2 1

F  
E  
D  
C  
B  
A



RECOMMENDED PC BOARD LAYOUT  
COMPONENT SIDE

NOTES :

- MATERIALS:  
HOUSING - LIQUID CRYSTAL POLYMER, GLASS FILLED, UL94V-0, BLACK  
TERMINALS - PHOSPHOR BRONZE
- PLATING :  
0.76µm MIN. GOLD IN SELECTIVE CONTACT AREA AND  
2.54µm MIN. TIN IN SOLDER TAIL AREA, BOTH  
OVER 127µm MIN. NICKEL.
- RECOMMENDED PCB THICKNESS IS 2.36 ± 0.13 mm.
- CIRCUIT #58 TO BE RECESSED 0.50mm BEHIND ALL OTHER CONTACTS.
- MATES WITH 71661-7XXX, 71661-25XXX.
- PRODUCT SPECIFICATION PS-87537-0001 APPLIES.
- PART IS LUBRICATED AT TERMINAL CONTACTS TO MINIMISE UNMATE FORCE.

ADD LUBRICATION EC NO: S2007-0048 DRINKWATER CHODSIRONG APPROX. CLING B1 REV	QUALITY SYMBOLS ▽=0 ▽=0	GENERAL TOLERANCES (UNLESS SPECIFIED) <table border="1"> <tr> <th></th> <th>mm</th> <th>INCH</th> </tr> <tr> <td>4 PLACES</td> <td>± ---</td> <td>± ---</td> </tr> <tr> <td>3 PLACES</td> <td>± ---</td> <td>± ---</td> </tr> <tr> <td>2 PLACES</td> <td>± 0.25</td> <td>± ---</td> </tr> <tr> <td>1 PLACE</td> <td>± ---</td> <td>± ---</td> </tr> <tr> <td colspan="3">ANGULAR ± 3 °</td> </tr> </table>		mm	INCH	4 PLACES	± ---	± ---	3 PLACES	± ---	± ---	2 PLACES	± 0.25	± ---	1 PLACE	± ---	± ---	ANGULAR ± 3 °			DIMENSION STYLE MM ONLY	SCALE NTS	DESIGN UNITS METRIC	THIRD ANGLE PROJECTION
		mm	INCH																					
	4 PLACES	± ---	± ---																					
	3 PLACES	± ---	± ---																					
	2 PLACES	± 0.25	± ---																					
1 PLACE	± ---	± ---																						
ANGULAR ± 3 °																								
DRAWN BY BBTAN	DATE 2005/09/29	TITLE EBBI, RECEPTACLE, CONN. 1.27MM CTR, 68 CKTS, R/A BLIND-MATE, 0.093 BRD																						
CHECKED BY CGTAN	DATE 2005/10/31	MOLEX INCORPORATED																						
APPROVED BY SHONG	DATE 2005/10/31	MATERIAL NO. SEE TABLE	DOCUMENT NO. SD-87537-100	SHEET NO. 2 OF 2																				
DRAFT WHERE APPLICABLE MUST REMAIN WITHIN DIMENSIONS																								

9 8 7 6 5 4 3 2 1