

Excellent Integrated System Limited

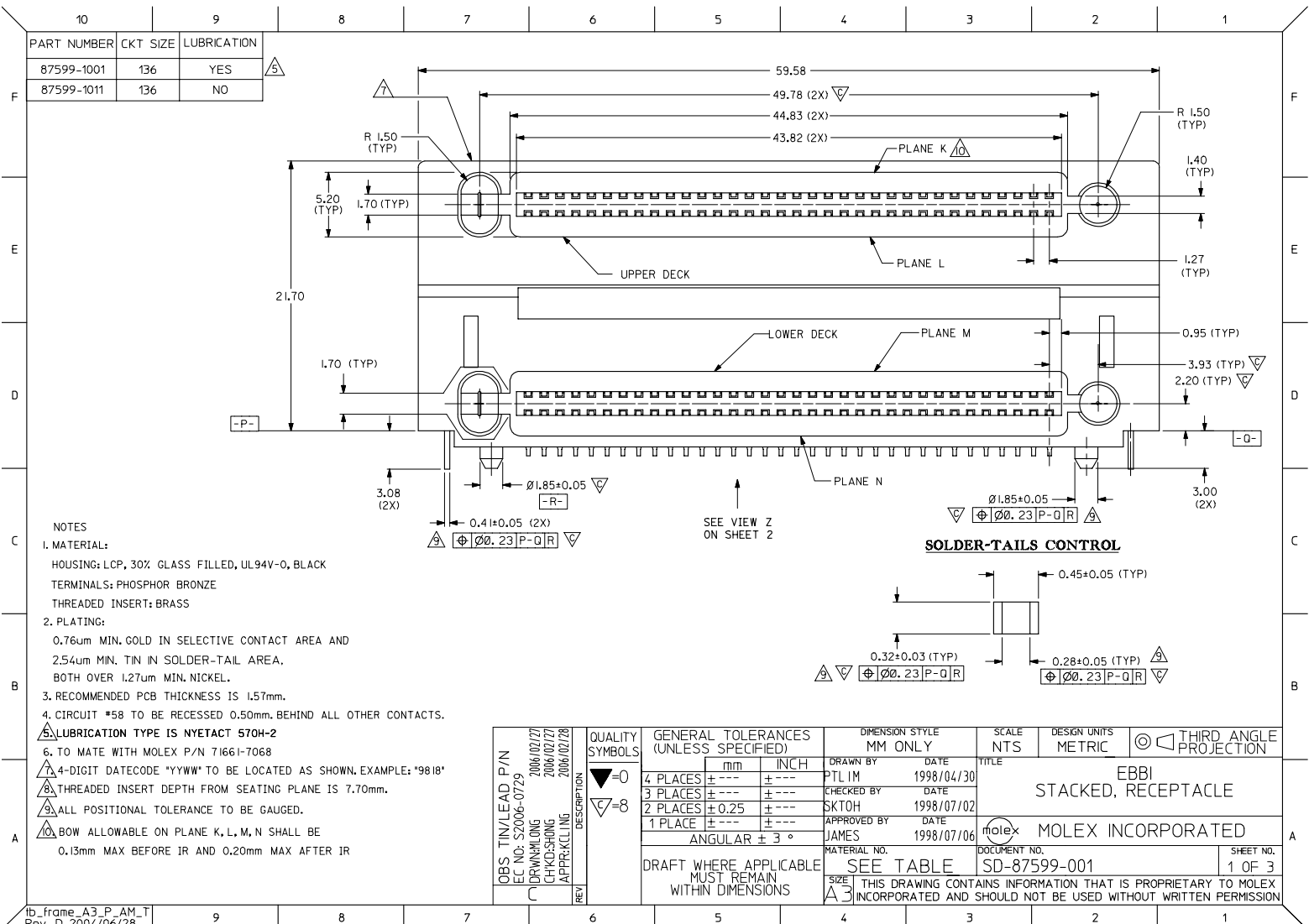
Stocking Distributor

Click to view price, real time Inventory, Delivery & Lifecycle Information:

[Molex Connector Corporation](#)
[0875991001](#)

For any questions, you can email us directly:

sales@integrated-circuit.com

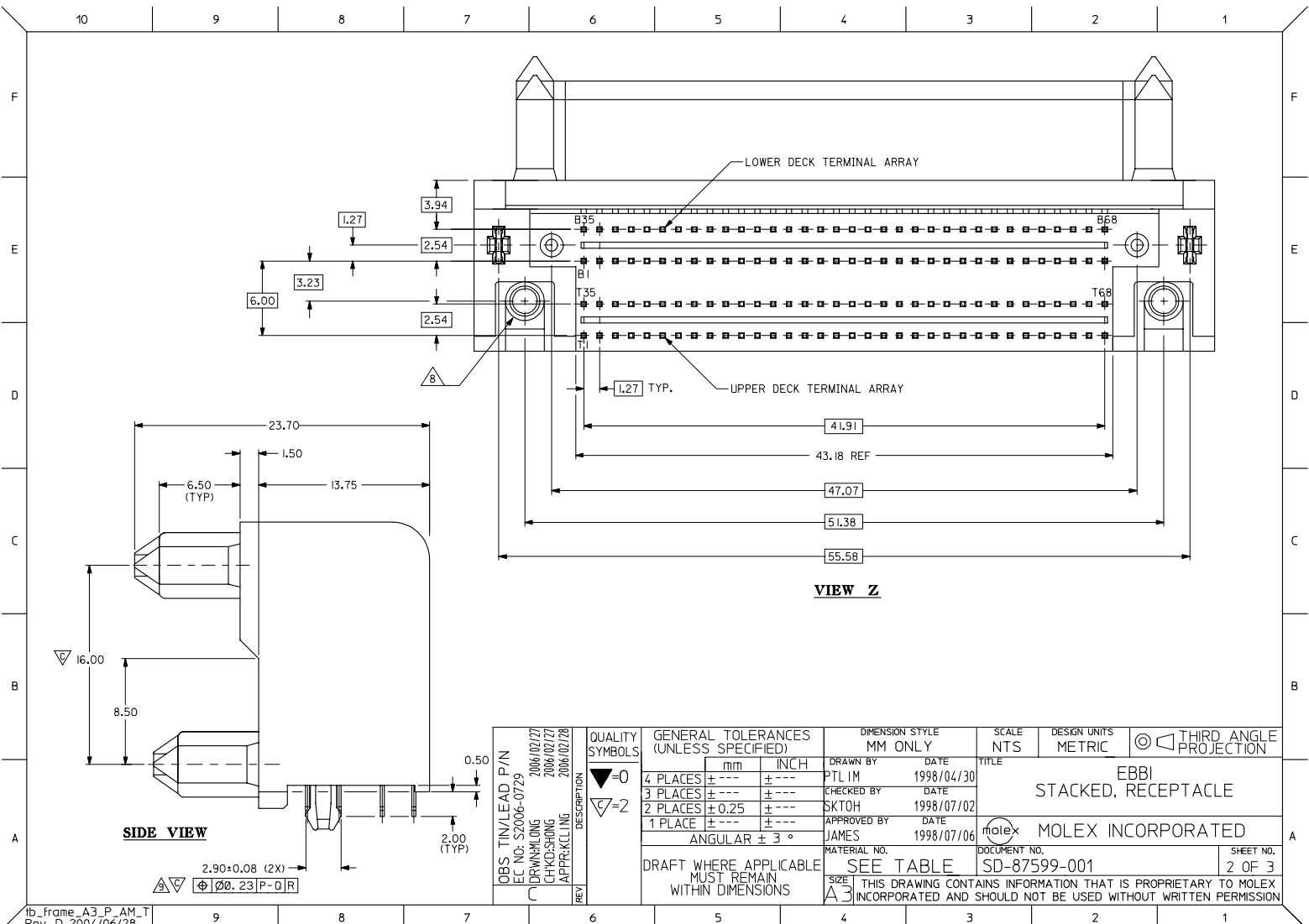


- NOTES**
- MATERIAL:**
HOUSING: LCP, 30% GLASS FILLED, UL94V-0, BLACK
TERMINALS: PHOSPHOR BRONZE
THREADED INSERT: BRASS
 - PLATING:**
0.76µm MIN. GOLD IN SELECTIVE CONTACT AREA AND
2.54µm MIN. TIN IN SOLDER-TAIL AREA.
BOTH OVER 1.27µm MIN. NICKEL.
 - RECOMMENDED PCB THICKNESS IS 1.57mm.
 - CIRCUIT #58 TO BE RECESSED 0.50mm. BEHIND ALL OTHER CONTACTS.
 - LUBRICATION TYPE IS NYETA CT 570H-2
 - TO MATE WITH MOLEX P/N 71661-7068
 - 4-DIGIT DATECODE 'YYWW' TO BE LOCATED AS SHOWN, EXAMPLE: '9818'
 - THREADED INSERT DEPTH FROM SEATING PLANE IS 7.70mm.
 - ALL POSITIONAL TOLERANCE TO BE GAUGED.
 - BOW ALLOWABLE ON PLANE K, L, M, N SHALL BE
0.13mm MAX BEFORE 1R AND 0.20mm MAX AFTER 1R

OBS. TIN/LEAD P/N EC. NO.: S2006-0729 DRAWN/CHKD/APPR: M/LONG/KS/SHONG/KL/ING 2006/07/27 2006/07/27 2006/07/28	QUALITY SYMBOLS ▽=0 ▽=8	GENERAL TOLERANCES (UNLESS SPECIFIED)		DIMENSION STYLE MM ONLY		SCALE NTS	DESIGN UNITS METRIC	THIRD ANGLE PROJECTION
		4 PLACES ± --- ± ---	3 PLACES ± --- ± ---	2 PLACES ± 0.25 ± ---	1 PLACE ± --- ± ---	ANGULAR ± 3 °	DRAWN BY: PTL/IM DATE: 1998/04/30 CHECKED BY: SKT/0H DATE: 1998/07/02 APPROVED BY: JAMES DATE: 1998/07/06	
DRAFT WHERE APPLICABLE MUST REMAIN WITHIN DIMENSIONS		SEE TABLE		MATERIAL NO.		DOCUMENT NO. SD-87599-001		SHEET NO. 1 OF 3

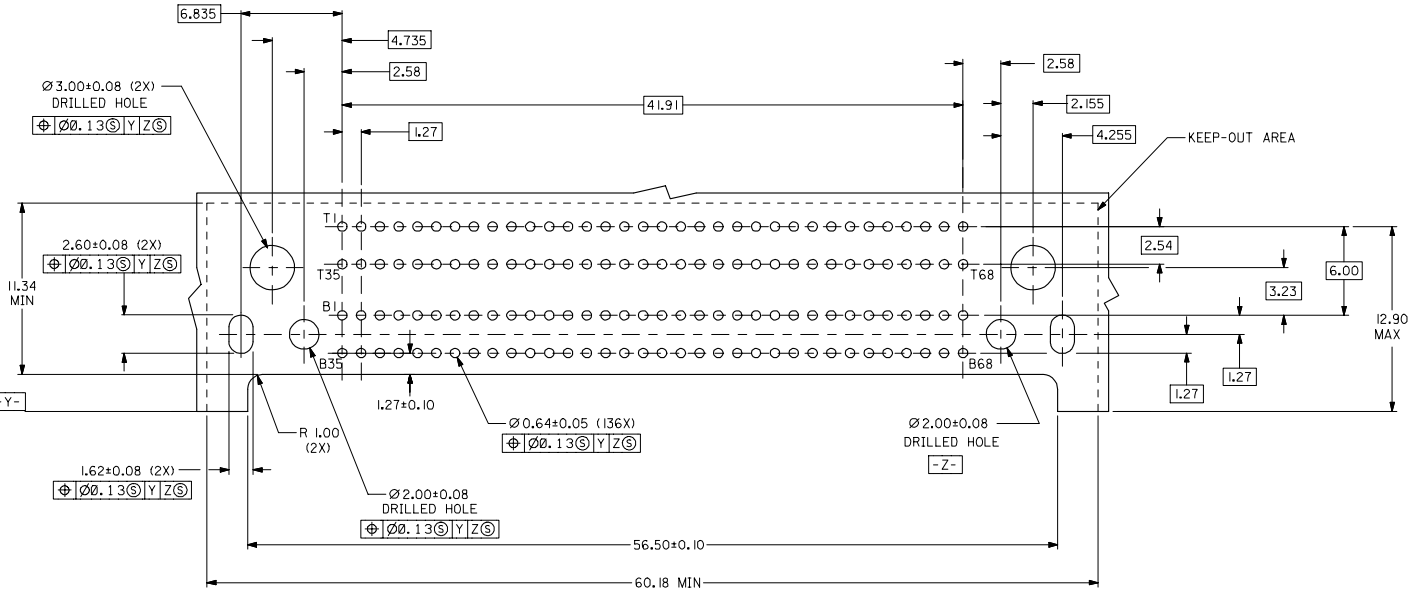
EBBI
STACKED, RECEPTACLE

MOLEX INCORPORATED



OBS TIN/LEAD P/N EC NO: S2006-0729 DRAWN BY: IRWIN/M/LONG CHKD: S/SHONG APPR: K/CLING 2006/07/27 2006/07/28	QUALITY SYMBOLS ▽=0 ▽=2	GENERAL TOLERANCES (UNLESS SPECIFIED) <table border="1"> <thead> <tr> <th></th> <th>mm</th> <th>INCH</th> </tr> </thead> <tbody> <tr> <td>4 PLACES</td> <td>± ---</td> <td>± ---</td> </tr> <tr> <td>3 PLACES</td> <td>± ---</td> <td>± ---</td> </tr> <tr> <td>2 PLACES</td> <td>± 0.25</td> <td>± ---</td> </tr> <tr> <td>1 PLACE</td> <td>± ---</td> <td>± ---</td> </tr> </tbody> </table> ANGULAR ± 3°		mm	INCH	4 PLACES	± ---	± ---	3 PLACES	± ---	± ---	2 PLACES	± 0.25	± ---	1 PLACE	± ---	± ---	DIMENSION STYLE MM ONLY	SCALE NTS	DESIGN UNITS METRIC	THIRD ANGLE PROJECTION
		mm	INCH																		
4 PLACES	± ---	± ---																			
3 PLACES	± ---	± ---																			
2 PLACES	± 0.25	± ---																			
1 PLACE	± ---	± ---																			
DRAWN BY: PTL/IM CHECKED BY: SKT/0H APPROVED BY: JAMES DATE: 1998/04/30 DATE: 1998/07/02 DATE: 1998/07/06	MATERIAL NO. SEE TABLE	DOCUMENT NO. SD-87599-001	TITLE EBBI STACKED, RECEPTACLE	MOLEX INCORPORATED	SHEET NO. 2 OF 3	THIS DRAWING CONTAINS INFORMATION THAT IS PROPRIETARY TO MOLEX INCORPORATED AND SHOULD NOT BE USED WITHOUT WRITTEN PERMISSION															

RECOMMENDED PCB LAYOUT



OBS TIN/LEAD P/N EC NO: S2006-0729 DRAWN/CHKD/APPR: DRW/M/CLG 2006/07/27 2006/07/27 2006/07/28	DESCRIPTION APPROX/CLG	QUALITY SYMBOLS	GENERAL TOLERANCES (UNLESS SPECIFIED)		DIMENSION STYLE MM ONLY		SCALE NTS	DESIGN UNITS METRIC	THIRD ANGLE PROJECTION																														
		$\nabla=0$ $\nabla=0$	<table border="1"> <tr> <th></th> <th>mm</th> <th>INCH</th> </tr> <tr> <td>4 PLACES</td> <td>±---</td> <td>±---</td> </tr> <tr> <td>3 PLACES</td> <td>±---</td> <td>±---</td> </tr> <tr> <td>2 PLACES</td> <td>±0.25</td> <td>±---</td> </tr> <tr> <td>1 PLACE</td> <td>±---</td> <td>±---</td> </tr> </table>		mm	INCH	4 PLACES	±---	±---	3 PLACES	±---	±---	2 PLACES	±0.25	±---	1 PLACE	±---	±---	<table border="1"> <tr> <th colspan="2">DRAWN BY</th> <th>DATE</th> </tr> <tr> <td colspan="2">PTL IM</td> <td>1998/04/30</td> </tr> <tr> <th colspan="2">CHECKED BY</th> <th>DATE</th> </tr> <tr> <td colspan="2">SKTOH</td> <td>1998/07/02</td> </tr> <tr> <th colspan="2">APPROVED BY</th> <th>DATE</th> </tr> <tr> <td colspan="2">JAMES</td> <td>1998/07/06</td> </tr> </table>	DRAWN BY		DATE	PTL IM		1998/04/30	CHECKED BY		DATE	SKTOH		1998/07/02	APPROVED BY		DATE	JAMES		1998/07/06	TITLE EBBI STACKED, RECEPTACLE	
			mm	INCH																																			
		4 PLACES	±---	±---																																			
3 PLACES	±---	±---																																					
2 PLACES	±0.25	±---																																					
1 PLACE	±---	±---																																					
DRAWN BY		DATE																																					
PTL IM		1998/04/30																																					
CHECKED BY		DATE																																					
SKTOH		1998/07/02																																					
APPROVED BY		DATE																																					
JAMES		1998/07/06																																					
DRAFT WHERE APPLICABLE MUST REMAIN WITHIN DIMENSIONS		MATERIAL NO. SEE TABLE		DOCUMENT NO. SD-87599-001		SHEET NO. 3 OF 3																																	
THIS DRAWING CONTAINS INFORMATION THAT IS PROPRIETARY TO MOLEX INCORPORATED AND SHOULD NOT BE USED WITHOUT WRITTEN PERMISSION																																							