

Excellent Integrated System Limited

Stocking Distributor

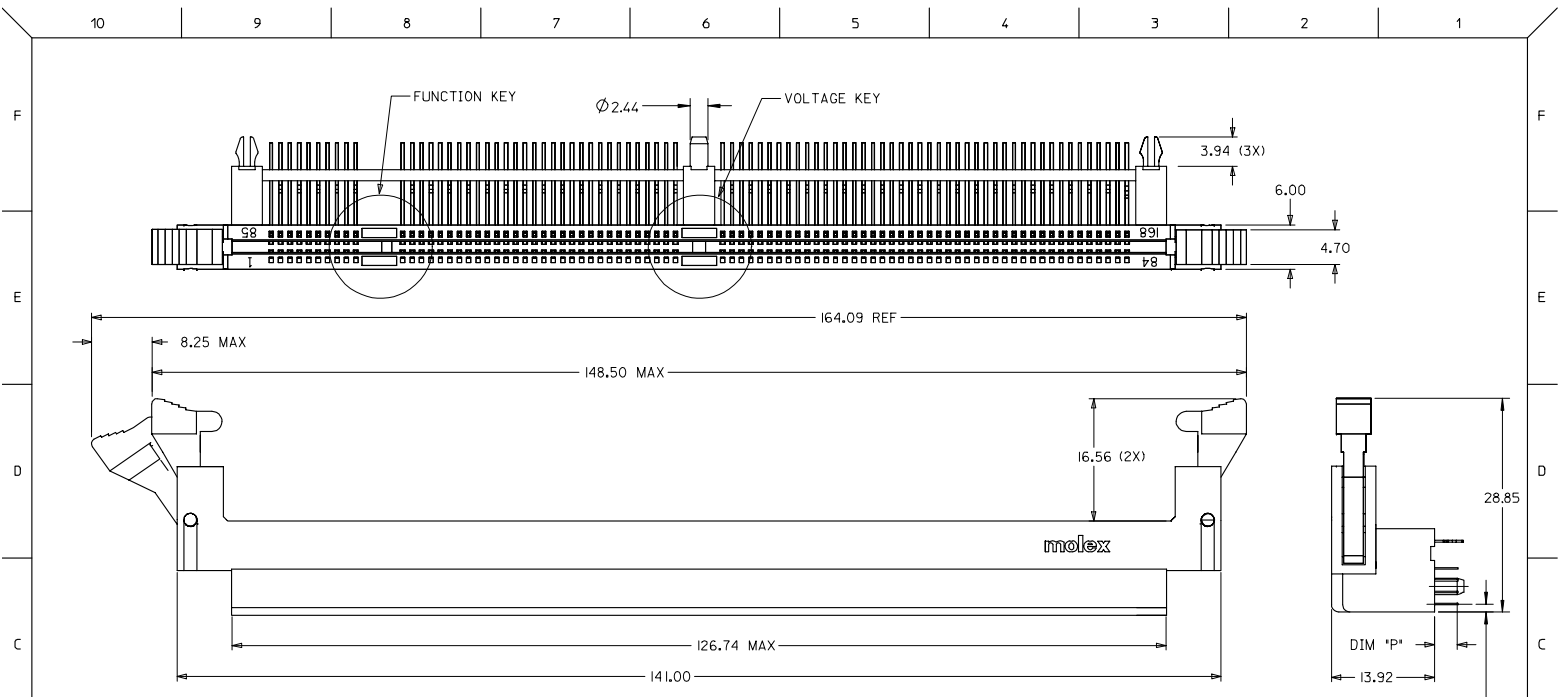
Click to view price, real time Inventory, Delivery & Lifecycle Information:

[Molex Connector Corporation](#)

[0876090153](#)

For any questions, you can email us directly:

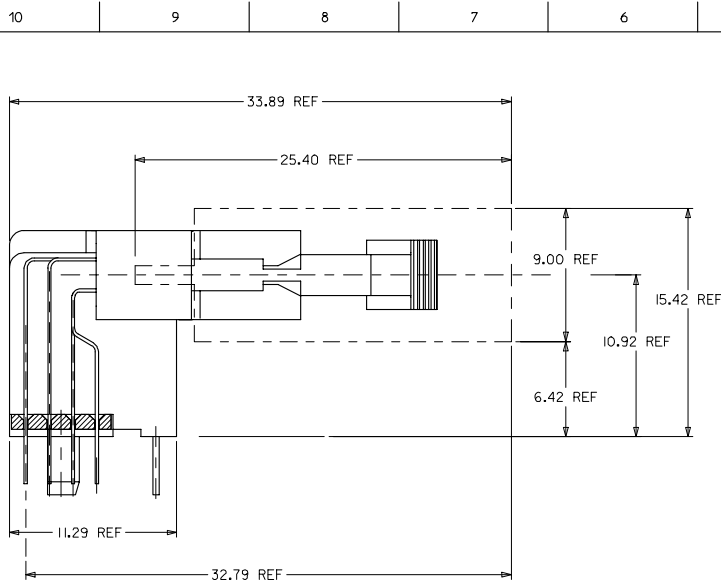
sales@integrated-circuit.com



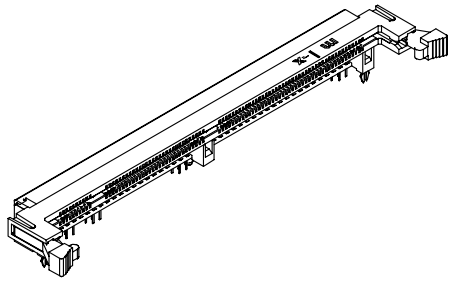
NOTES:

1. PRODUCT SPEC PS-87609-002 APPLIES.
2. PRODUCT IS PACKAGED IN TRAYS.
3. MATERIALS:
HOUSING, COVER & BASEPLATE - LCP, GLASS FILLED, UL 94V-0, COLOR: BLACK
TERMINAL - PHOSPHOR BRONZE
LATCHES - HIGH-TEMP NYLON, GLASS FILLED, UL 94V-0, COLOR: BEIGE
FORCKLOCKS - COPPER ALLOY OR STEEL ALLOY
4. PLATING:
CONTACT AREA:
SEE TABLE ON SHEET 3 OF 3
FOR GOLD PLATING OPTION AT CONTACT AREA
SOLDER TAIL: 75MIN/(1.91MM) MIN. TIN
UNDERPLATE: 50MIN/(1.27MM) MIN. NICKEL

VOID P/N EC NO: S2007-0207 2006/11/08 DRUMSANG 2006/11/09 CHOKHONG APPR:SKLOH 2006/11/10	DESCRIPTION REV	QUALITY SYMBOLS ▽=0 ▽=0	GENERAL TOLERANCES (UNLESS SPECIFIED)		DIMENSION STYLE MM ONLY		SCALE NTS	DESIGN UNITS METRIC	THIRD ANGLE PROJECTION
		4 PLACES ± --- ± --- 3 PLACES ± --- ± --- 2 PLACES ± 0.25 ± --- 1 PLACE ± --- ± ---	mm INCH	DRAWN BY SQUEK	DATE 2000/01/21	TITLE DDR DIMM, 127MM PITCH 168 CKTS, R/A			
		ANGULAR ± 5 °		CHECKED BY KCLING	DATE 2000/03/01	MOLEX INCORPORATED			
		DRAFT WHERE APPLICABLE MUST REMAIN WITHIN DIMENSIONS		APPROVED BY SKTOH	DATE 2000/03/03	MATERIAL NO. SEE TABLE	DOCUMENT NO. SD-87609-001	SHEET NO. 1 OF 3	



ACTUAL MODULE HEIGHT AND CLEARANCE
WHEN USING A 9.00MM THICK BY 25.40MM HEIGHT
MODULE (TYPICAL SOJ PACKAGING).



PART NUMBER	FUNCTION KEY	GOLD PLATING OPTION AT CONTACT AREA	DATUM VOLTAGE KEY	TAIL LENGTH P±0.25	RECOMMENDED PCB THICKNESS
87609-0051	LEFT	154N/(0.384M) MIN.	CENTER (3.3V)	2.79	1.57
87609-0052	CENTRE				
87609-0053	RIGHT				
87609-0151	LEFT	304N/(0.764M) MIN.	CENTER (3.3V)	3.18	2.36
87609-0152	CENTRE				
87609-0153	RIGHT				
87609-0061	CENTRE	154N/(0.384M) MIN.	CENTER (3.3V)	3.56	2.79
87609-0062	RIGHT				
87609-0162	RIGHT				
87609-0069	LEFT	154N/(0.384M) MIN.	CENTER (3.3V)	3.56	2.79
87609-0070	CENTRE				
87609-0071	RIGHT				
87609-0171	RIGHT	304N/(0.764M) MIN.			

VOID P/N EC NO: S2007-0207 THERMINSKIANIC CHKD:HLONG APPR:SKLOH	DESCRIPTION 2006/11/08 2006/11/09 2006/11/10	QUALITY SYMBOLS	GENERAL TOLERANCES (UNLESS SPECIFIED)	DIMENSION STYLE	SCALE	DESIGN UNITS	THIRD ANGLE PROJECTION															
		$\nabla=0$ $\nabla=0$	<table border="1"> <tr> <th></th> <th>mm</th> <th>INCH</th> </tr> <tr> <td>4 PLACES</td> <td>±---</td> <td>±---</td> </tr> <tr> <td>3 PLACES</td> <td>±---</td> <td>±---</td> </tr> <tr> <td>2 PLACES</td> <td>±0.25</td> <td>±---</td> </tr> <tr> <td>1 PLACE</td> <td>±---</td> <td>±---</td> </tr> </table>		mm	INCH	4 PLACES	±---	±---	3 PLACES	±---	±---	2 PLACES	±0.25	±---	1 PLACE	±---	±---	MM ONLY	NTS	METRIC	
			mm	INCH																		
		4 PLACES	±---	±---																		
3 PLACES	±---	±---																				
2 PLACES	±0.25	±---																				
1 PLACE	±---	±---																				
DRAFT WHERE APPLICABLE MUST REMAIN WITHIN DIMENSIONS	<table border="1"> <tr> <td>DRAWN BY</td> <td>DATE</td> <td>TITLE</td> </tr> <tr> <td>SQUEK</td> <td>2000/01/21</td> <td>DDR DIMM, 127MM PITCH 168 CKTS, R/A</td> </tr> <tr> <td>CHECKED BY</td> <td>DATE</td> <td></td> </tr> <tr> <td>KCL ING</td> <td>2000/03/01</td> <td></td> </tr> <tr> <td>APPROVED BY</td> <td>DATE</td> <td></td> </tr> <tr> <td>SKTOH</td> <td>2000/03/03</td> <td></td> </tr> </table>	DRAWN BY	DATE	TITLE	SQUEK	2000/01/21	DDR DIMM, 127MM PITCH 168 CKTS, R/A	CHECKED BY	DATE		KCL ING	2000/03/01		APPROVED BY	DATE		SKTOH	2000/03/03		MATERIAL NO. SEE TABLE	DOCUMENT NO. SD-87609-001	SHEET NO. 3 OF 3
DRAWN BY	DATE	TITLE																				
SQUEK	2000/01/21	DDR DIMM, 127MM PITCH 168 CKTS, R/A																				
CHECKED BY	DATE																					
KCL ING	2000/03/01																					
APPROVED BY	DATE																					
SKTOH	2000/03/03																					
THIS DRAWING CONTAINS INFORMATION THAT IS PROPRIETARY TO MOLEX INCORPORATED AND SHOULD NOT BE USED WITHOUT WRITTEN PERMISSION																						