

## Excellent Integrated System Limited

Stocking Distributor

Click to view price, real time Inventory, Delivery & Lifecycle Information:

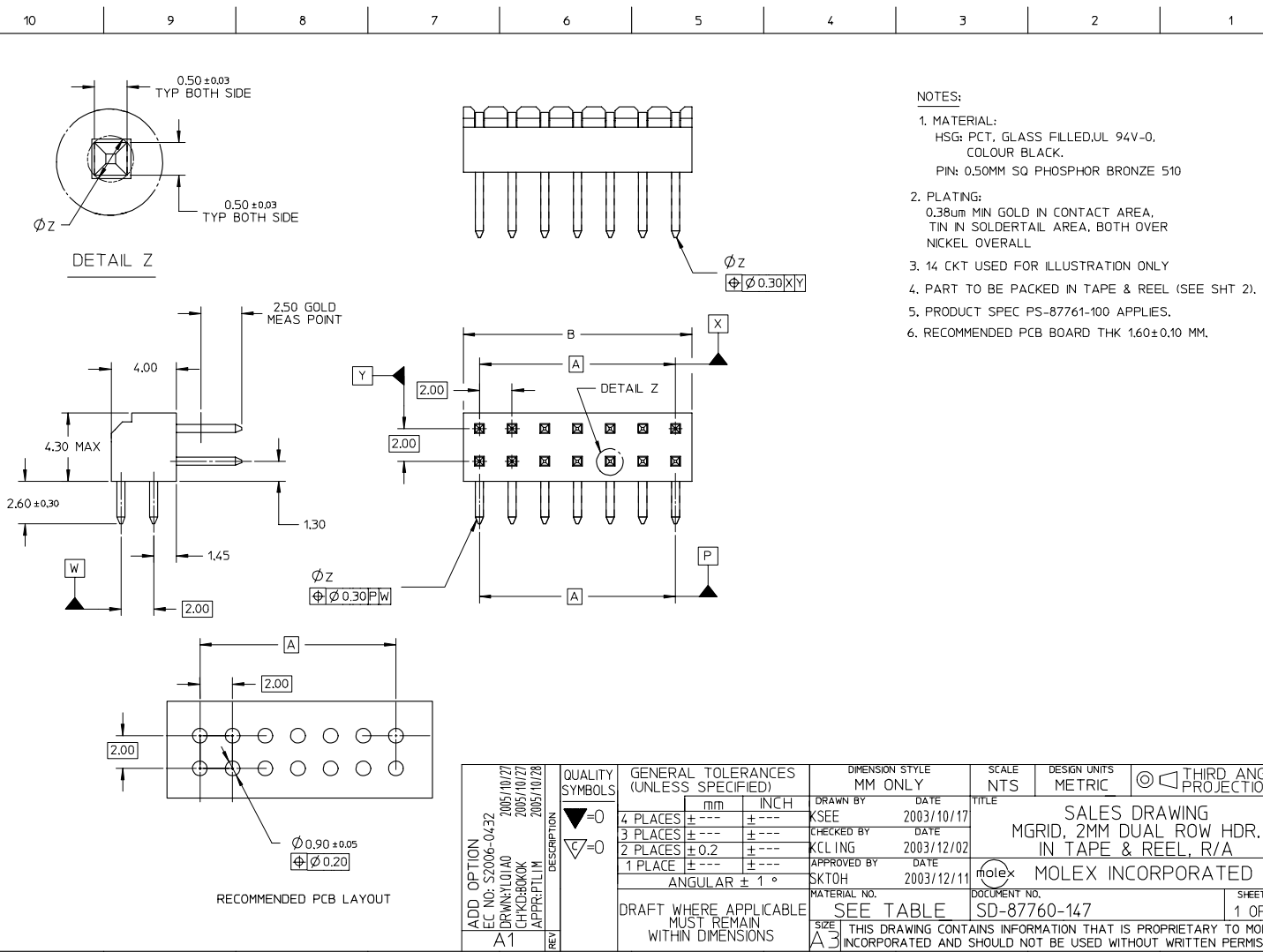
[Molex Connector Corporation](#)  
[0877608112](#)

For any questions, you can email us directly:

[sales@integrated-circuit.com](mailto:sales@integrated-circuit.com)

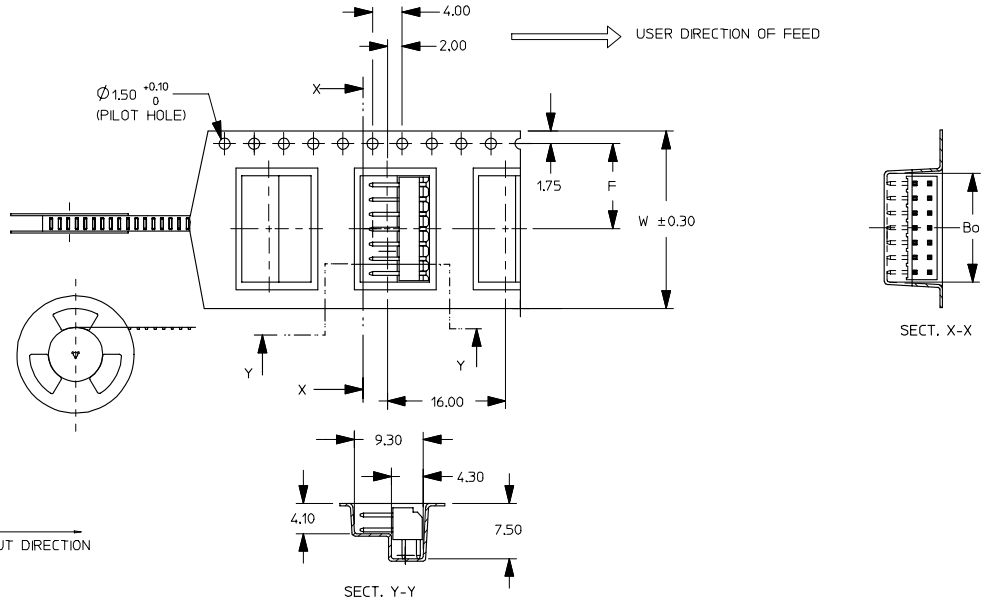
**NOTES:**

1. MATERIAL:  
HSG: PCT, GLASS FILLED, UL 94V-0,  
COLOUR BLACK.  
PIN: 0.50MM SQ PHOSPHOR BRONZE 510
2. PLATING:  
0.38um MIN GOLD IN CONTACT AREA,  
TIN IN SOLDER TAIL AREA, BOTH OVER  
NICKEL OVERALL
3. 14 CKT USED FOR ILLUSTRATION ONLY
4. PART TO BE PACKED IN TAPE & REEL (SEE SHT 2).
5. PRODUCT SPEC PS-87761-100 APPLIES.
6. RECOMMENDED PCB BOARD THK 1.60±0.10 MM.



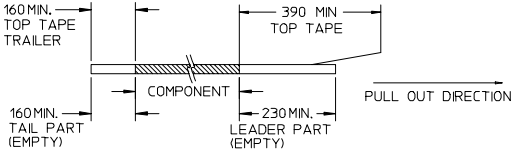
ADD OPTION EC NO: S2006-0432 DRAWN BY: 2005/10/27 CHK'D BY: 2005/10/27 APPROV'D BY: 2005/10/28	DESCRIPTION A1	QUALITY SYMBOLS ▽=0 ▽=0	GENERAL TOLERANCES (UNLESS SPECIFIED)		DIMENSION STYLE MM ONLY		SCALE NTS	DESIGN UNITS METRIC	THIRD ANGLE PROJECTION
		4 PLACES ± --- ± --- 3 PLACES ± --- ± --- 2 PLACES ± 0.2 ± --- 1 PLACE ± --- ± ---	mm      INCH	DRAWN BY: KSEE DATE: 2003/10/17	TITLE SALES DRAWING MGRID, 2MM DUAL ROW HDR. IN TAPE & REEL, R/A				
		ANGULAR ± 1 °		CHECKED BY: KCL ING DATE: 2003/12/02	MOLEX INCORPORATED				
		DRAFT WHERE APPLICABLE MUST REMAIN WITHIN DIMENSIONS		APPROVED BY: SKTOH DATE: 2003/12/11					
MATERIAL NO. SEE TABLE			DOCUMENT NO. SD-87760-147		SHEET NO. 1 OF 2				

10	9	8	7	6	5	4	3	2	1
PART NUMBER (IN TAPE/REEL)	PART NUMBER (IN TRAY)	CKT SIZE	A	B	Bo	F	So	W	
87760-8010	87760-1416	14	12.00	14.00	14.40	11.50	-	24.00	
87760-8112	87760-1216	12	10.00	12.00	12.40	11.50	-	24.00	

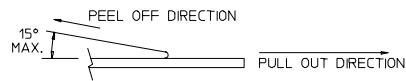


NOTES:

1. LEADER AND TRAILER TAPE



2. PEELING OFF FORCE OF THE TOP TAPE: 20-80gf. (PEELING DIRECTION AS SHOWN IN FOLLOWING FIGURE)



3. PACKAGING STANDARD IS AS PER EIA-481.

4. TAPE & REEL QUANTITY = 500 PCS/REEL

ADD OPTION EC NO: S2006-0432 DRAWN BY: JLN CHECKED BY: CHK APPROVED BY: PLM DATE: 2005/10/27 DATE: 2005/10/27 DATE: 2005/10/28	QUALITY SYMBOLS ▽=0 ▽=0	GENERAL TOLERANCES (UNLESS SPECIFIED)		DIMENSION STYLE MM ONLY		SCALE NTS	DESIGN UNITS METRIC	THIRD ANGLE PROJECTION	
		4 PLACES ± --- ± ---	3 PLACES ± --- ± ---	2 PLACES ± 0.2 ± ---	1 PLACE ± --- ± ---	DRAWN BY: KSEE	DATE: 2003/10/17	TITLE: SALES DRAWING MGRID, 2MM DUAL ROW HDR. IN TAPE & REEL, R/A	
		ANGULAR ± 1 °				CHECKED BY: KCL	DATE: 2003/12/02	MOLEX INCORPORATED	
		DRAFT WHERE APPLICABLE MUST REMAIN WITHIN DIMENSIONS				APPROVED BY: SKTOH	DATE: 2003/12/11	MATERIAL NO. SEE TABLE	DOCUMENT NO. SD-87760-147