

Excellent Integrated System Limited

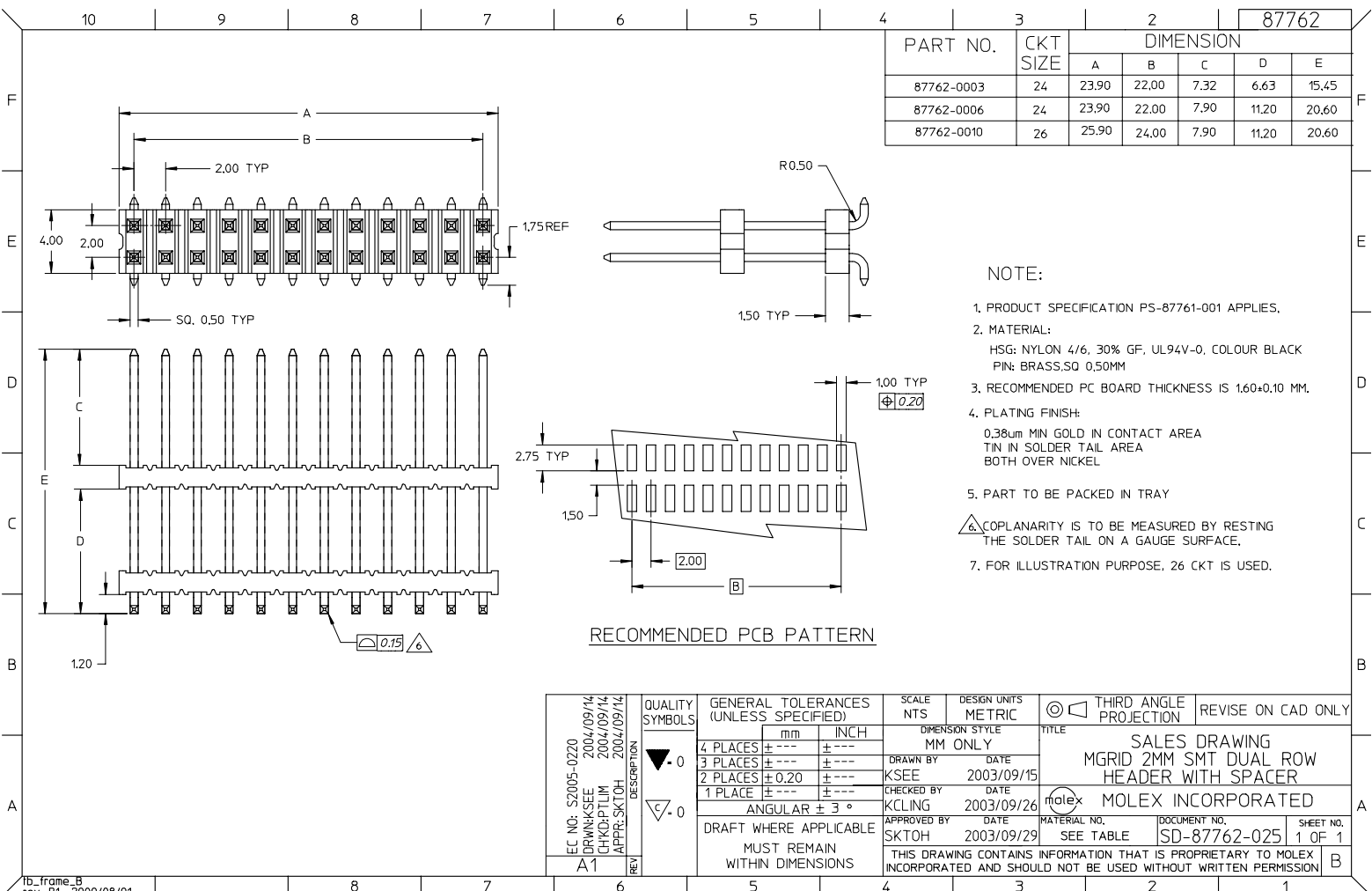
Stocking Distributor

Click to view price, real time Inventory, Delivery & Lifecycle Information:

[Molex Connector Corporation](#)
[0877620010](#)

For any questions, you can email us directly:

sales@integrated-circuit.com



PART NO.	CKT SIZE	DIMENSION				
		A	B	C	D	E
87762-0003	24	23.90	22.00	7.32	6.63	15.45
87762-0006	24	23.90	22.00	7.90	11.20	20.60
87762-0010	26	25.90	24.00	7.90	11.20	20.60

- NOTE:
- PRODUCT SPECIFICATION PS-87761-001 APPLIES.
 - MATERIAL:
HSG: NYLON 4/6, 30% GF, UL94V-0. COLOUR BLACK
PIN: BRASS, SQ 0.50MM
 - RECOMMENDED PC BOARD THICKNESS IS 1.60±0.10 MM.
 - PLATING FINISH:
0.38µm MIN GOLD IN CONTACT AREA
TIN IN SOLDER TAIL AREA
BOTH OVER NICKEL
 - PART TO BE PACKED IN TRAY
 - COPLANARITY IS TO BE MEASURED BY RESTING THE SOLDER TAIL ON A GAUGE SURFACE.
 - FOR ILLUSTRATION PURPOSE, 26 CKT IS USED.

RECOMMENDED PCB PATTERN

EC NO: S2005-0220 DRAWN/SEE: 2004/09/14 CHKD:PTLM 2004/09/14 APPR: SKTOH 2004/09/14	QUALITY SYMBOLS	GENERAL TOLERANCES (UNLESS SPECIFIED) <table border="1"> <tr> <th></th> <th>mm</th> <th>INCH</th> </tr> <tr> <td>4 PLACES</td> <td>±---</td> <td>±---</td> </tr> <tr> <td>3 PLACES</td> <td>±---</td> <td>±---</td> </tr> <tr> <td>2 PLACES</td> <td>±0.20</td> <td>±---</td> </tr> <tr> <td>1 PLACE</td> <td>±---</td> <td>±---</td> </tr> </table>		mm	INCH	4 PLACES	±---	±---	3 PLACES	±---	±---	2 PLACES	±0.20	±---	1 PLACE	±---	±---	SCALE NTS	DESIGN UNITS METRIC	THIRD ANGLE PROJECTION	REVISE ON CAD ONLY
			mm	INCH																	
	4 PLACES		±---	±---																	
	3 PLACES		±---	±---																	
2 PLACES	±0.20	±---																			
1 PLACE	±---	±---																			
DESCRIPTION	▽-0	DIMENSION STYLE MM ONLY DRAFT WHERE APPLICABLE MUST REMAIN WITHIN DIMENSIONS	DRAWN BY	DATE	TITLE SALES DRAWING MGRID 2MM SMT DUAL ROW HEADER WITH SPACER	MOLEX INCORPORATED															
	▽.0		ANGULAR ± 3° DRAFT WHERE APPLICABLE MUST REMAIN WITHIN DIMENSIONS	CHECKED BY KCLING			DATE 2003/09/26														
REV	A1		APPROVED BY SKTOH	DATE 2003/09/29	MATERIAL NO. SEE TABLE	DOCUMENT NO. SD-87762-025	SHEET NO. 1 OF 1														