

## Excellent Integrated System Limited

Stocking Distributor

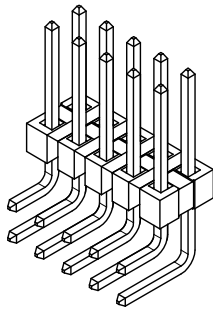
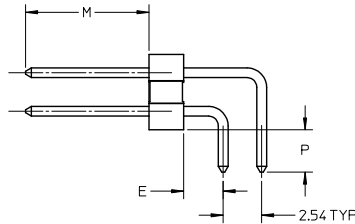
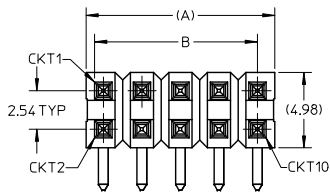
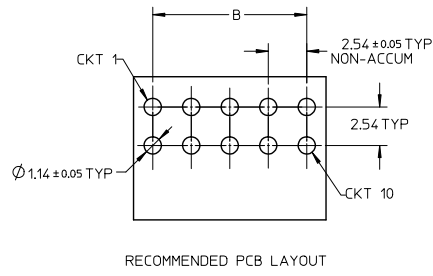
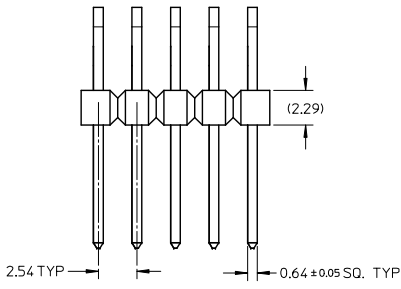
Click to view price, real time Inventory, Delivery & Lifecycle Information:

[Molex Connector Corporation](#)  
[0879111207](#)

For any questions, you can email us directly:

[sales@integrated-circuit.com](mailto:sales@integrated-circuit.com)

10 9 8 7 6 5 4 3 2 1



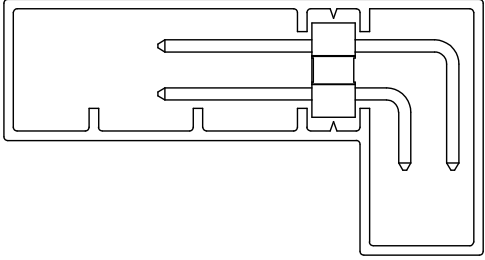
**NOTES**

- MATERIAL:**  
HSG: LCP, GLASS-FILLED, UL94V-0  
COLOR, BLACK  
PIN: COPPER ALLOY 0.64 mm SQ.
- PLATING TYPE:**
  - 0.38µm MIN GOLD IN CONTACT AREA OVER  
2.00µm MIN TIN SELECTIVE IN SOLDER AREA BOTH OVER  
1.25µm NICKEL OVERALL
  - 0.75µm MIN GOLD IN CONTACT AREA OVER  
2.00µm MIN TIN SELECTIVE IN SOLDER AREA BOTH OVER  
1.25µm NICKEL OVERALL
  - 2.50µm MIN TIN OVERALL  
1.25µm NICKEL OVERALL
- FOR PACKAGING OPTION PLEASE REFER TO THE TABLE
- PCB THICKNESS 1.6+/-0.10mm
- PIN PUSHOUT FORCE 1kgf MIN IN EITHER DIRECTION
- PRODUCT SPECIFICATION: PS-87920-019
- WAFER TO BE FLAT WITHIN 0.003 mm/mm
- THE ABOVE 10CKT SHOWN IS FOR ILLUSTRATION ONLY.
- EDGES WILL BE ROUGH OR IRREGULAR FOR THESE PARTS DUE TO BREAK-OFF. DIM SHOULD BE TAKEN AS REFERENCE
- PACKAGING SPECIFICATION: PK-89990-520

PDR#1872.ADD 879112610 EC NO. S2009-0252 DRAWN: YCHONG 2008/10/15 CHKD: SKANG 2008/10/16 APPR: HLONG 2008/10/16	QUALITY SYMBOLS	GENERAL TOLERANCES (UNLESS SPECIFIED)		DIMENSION STYLE MM ONLY		SCALE NTS	DESIGN UNITS METRIC	THIRD ANGLE PROJECTION
	▽=0	4 PLACES ± ---	± ---	mm	INCH	DRAWN BY SKLIM01	DATE 2006/01/24	TITLE CUSTOM HEADER C-GRID, DUAL ROW HEADER SINGLE WAFER, R/A
	▽=0	3 PLACES ± ---	± ---			CHECKED BY PATEY	DATE 2006/02/08	MATERIAL NO. SEE TABLE
		2 PLACES ± 0.20	± ---			APPROVED BY PATEY	DATE 2006/02/08	DOCUMENT NO. SD-87911-037
REV B2	DESCRIPTION	1 PLACE ± ---	± ---	ANGULAR ± 3°		MATERIAL NO. SEE TABLE		SHEET NO. 1 OF 5
DRAFT WHERE APPLICABLE MUST REMAIN WITHIN DIMENSIONS		THIS DRAWING CONTAINS INFORMATION THAT IS PROPRIETARY TO MOLEX INCORPORATED AND SHOULD NOT BE USED WITHOUT WRITTEN PERMISSION						

10 9 8 7 6 5 4 3 2 1

10 9 8 7 6 5 4 3 2 1



PART IN TUBE ORIENTATION

TRAY	TUBE WITHOUT CAP	TUBE WITH CAP	CKT SIZE	VOID POSITION	PLATING TYPE	DIMENSION				
						A	B	M	P	E
87911-0407	-----	-----	4	----	1	5.08	2.54	8.13	2.79	2.61
87911-0408	-----	-----	4	----	2	5.08	2.54	8.13	2.79	2.61
87911-0409	-----	-----	4	----	3	5.08	2.54	8.13	2.79	2.61
87911-0607	-----	-----	6	----	1	7.62	5.08	8.13	2.79	2.61
87911-0608	-----	-----	6	----	2	7.62	5.08	8.13	2.79	2.61
87911-0609	-----	-----	6	----	3	7.62	5.08	8.13	2.79	2.61
-----	87911-0807	-----	8	----	1	10.16	7.62	8.13	2.79	2.61
-----	87911-0808	-----	8	----	2	10.16	7.62	8.13	2.79	2.61
-----	87911-0809	-----	8	----	3	10.16	7.62	8.13	2.79	2.61
-----	87911-1007	-----	10	----	1	12.70	10.16	8.13	2.79	2.61
-----	87911-1008	-----	10	----	2	12.70	10.16	8.13	2.79	2.61
-----	87911-1009	-----	10	----	3	12.70	10.16	8.13	2.79	2.61
-----	87911-1207	-----	12	----	1	15.24	12.70	8.13	2.79	2.61
-----	87911-1208	-----	12	----	2	15.24	12.70	8.13	2.79	2.61
-----	87911-1209	-----	12	----	3	15.24	12.70	8.13	2.79	2.61
-----	87911-1407	-----	14	----	1	17.78	15.24	8.13	2.79	2.61
-----	87911-1408	-----	14	----	2	17.78	15.24	8.13	2.79	2.61
-----	87911-1409	-----	14	----	3	17.78	15.24	8.13	2.79	2.61

PDR#1872.ADD 879112610 EC NO: S2009-0252 DRAWN: MCHONG 2008/10/15 CHKD: SKANG 2008/10/16 APPR: HLONG 2008/10/16	QUALITY SYMBOLS ▽=0 ▽=0	GENERAL TOLERANCES (UNLESS SPECIFIED)		DIMENSION STYLE MM ONLY		SCALE NTS	DESIGN UNITS METRIC	THIRD ANGLE PROJECTION
		4 PLACES ± --- ± --- 3 PLACES ± --- ± --- 2 PLACES ± 0.20 ± --- 1 PLACE ± --- ± --- ANGULAR ± 3°	DRAWN BY SKLIM01 DATE 2006/01/24	CHECKED BY PATEY DATE 2006/02/08	APPROVED BY PATEY DATE 2006/02/08	MATERIAL NO. SEE TABLE	DOCUMENT NO. SD-87911-037	TITLE CUSTOM HEADER C-GRID, DUAL ROW HEADER SINGLE WAFER, R/A

9 8 7 6 5 4 3 2 1



Distributor of Molex Connector Corporation: Excellent Integrated System Limited

Datasheet of 0879111207 - 2.54MMCGRID DRSW HDR RA O/PG

Contact us: sales@integrated-circuit.com Website: www.integrated-circuit.com

PACKAGING OPTION PART NO.		TRAY	TUBE WITHOUT CAP	TUBE WITH CAP	CKT SIZE	VOID POSITION	PLATING TYPE	DIMENSION					PACKAGING OPTION PART NO.		CKT SIZE	VOID POSITION	PLATING TYPE	DIMENSION					
TRAY	TUBE WITHOUT CAP							TUBE WITH CAP	A	B	M	P	E	TRAY				TUBE WITHOUT CAP	TUBE WITH CAP	A	B	M	P
F	-----	87911-1607	-----	-----	16	----	1	20.32	17.78	8.13	2.79	2.61	-----	87911-2807	-----	28	----	1	35.56	33.02	8.13	2.79	2.61
	-----	87911-1608	-----	-----	16	----	2	20.32	17.78	8.13	2.79	2.61	-----	87911-2808	-----	28	----	2	35.56	33.02	8.13	2.79	2.61
	-----	87911-1609	-----	-----	16	----	3	20.32	17.78	8.13	2.79	2.61	-----	87911-2809	-----	28	----	3	35.56	33.02	8.13	2.79	2.61
	-----	87911-1807	-----	-----	18	----	1	22.86	20.32	8.13	2.79	2.61	-----	87911-3007	-----	30	----	1	38.10	35.56	8.13	2.79	2.61
	-----	87911-1808	-----	-----	18	----	2	22.86	20.32	8.13	2.79	2.61	-----	87911-3008	-----	30	----	2	38.10	35.56	8.13	2.79	2.61
	-----	87911-1809	-----	-----	18	----	3	22.86	20.32	8.13	2.79	2.61	-----	87911-3009	-----	30	----	3	38.10	35.56	8.13	2.79	2.61
	-----	87911-2007	-----	-----	20	----	1	25.40	22.86	8.13	2.79	2.61	-----	87911-3207	-----	32	----	1	40.64	38.10	8.13	2.79	2.61
	-----	87911-2008	-----	-----	20	----	2	25.40	22.86	8.13	2.79	2.61	-----	87911-3208	-----	32	----	2	40.64	38.10	8.13	2.79	2.61
	-----	87911-2009	-----	-----	20	----	3	25.40	22.86	8.13	2.79	2.61	-----	87911-3209	-----	32	----	3	40.64	38.10	8.13	2.79	2.61
	-----	87911-2207	-----	-----	22	----	1	27.94	25.40	8.13	2.79	2.61	-----	87911-3407	-----	34	----	1	43.18	40.64	8.13	2.79	2.61
	-----	87911-2208	-----	-----	22	----	2	27.94	25.40	8.13	2.79	2.61	-----	87911-3408	-----	34	----	2	43.18	40.64	8.13	2.79	2.61
	-----	87911-2209	-----	-----	22	----	3	27.94	25.40	8.13	2.79	2.61	-----	87911-3409	-----	34	----	3	43.18	40.64	8.13	2.79	2.61
	-----	87911-2407	-----	-----	24	----	1	30.48	27.94	8.13	2.79	2.61	-----	87911-3607	-----	36	----	1	45.72	43.18	8.13	2.79	2.61
	-----	87911-2408	-----	-----	24	----	2	30.48	27.94	8.13	2.79	2.61	-----	87911-3608	-----	36	----	2	45.72	43.18	8.13	2.79	2.61
	-----	87911-2409	-----	-----	24	----	3	30.48	27.94	8.13	2.79	2.61	-----	87911-3609	-----	36	----	3	45.72	43.18	8.13	2.79	2.61
	-----	87911-2607	-----	-----	26	----	1	33.02	30.48	8.13	2.79	2.61	-----	87911-3807	-----	38	----	1	48.26	45.72	8.13	2.79	2.61
	-----	87911-2608	-----	-----	26	----	2	33.02	30.48	8.13	2.79	2.61	-----	87911-3808	-----	38	----	2	48.26	45.72	8.13	2.79	2.61
	-----	87911-2609	-----	-----	26	----	3	33.02	30.48	8.13	2.79	2.61	-----	87911-3809	-----	38	----	3	48.26	45.72	8.13	2.79	2.61
	-----	87911-2610	-----	-----	26	----	3	33.02	30.48	4.00	2.79	1.32											

PDR#1872.ADD 879112610 EC NO. S2009-0252 DRAWN: MCHONG 2008/10/15 CHKD: SKANG 2008/10/16 APPR: HLONG 2008/10/16	QUALITY SYMBOLS ▽=0 ▽=0	GENERAL TOLERANCES (UNLESS SPECIFIED) 4 PLACES ± --- ± --- 3 PLACES ± --- ± --- 2 PLACES ± 0.20 ± --- 1 PLACE ± --- ± --- ANGULAR ± 3°	DIMENSION STYLE MM ONLY DRAWN BY SKL IM01 DATE 2006/01/24 CHECKED BY PATEY DATE 2006/02/08 APPROVED BY PATEY DATE 2006/02/08	SCALE NTS DESIGN UNITS METRIC THIRD ANGLE PROJECTION	TITLE CUSTOM HEADER C-GRID, DUAL ROW HEADER SINGLE WAFER, R/A	MOLEX INCORPORATED MATERIAL NO. SEE TABLE DOCUMENT NO. SD-87911-037	SHEET NO. 3 OF 5
		DRAFT WHERE APPLICABLE MUST REMAIN WITHIN DIMENSIONS	THIS DRAWING CONTAINS INFORMATION THAT IS PROPRIETARY TO MOLEX INCORPORATED AND SHOULD NOT BE USED WITHOUT WRITTEN PERMISSION				



Distributor of Molex Connector Corporation: Excellent Integrated System Limited

Datasheet of 0879111207 - 2.54MMCGRID DRSW HDR RA O/PG

Contact us: sales@integrated-circuit.com Website: www.integrated-circuit.com

PACKAGING OPTION PART NO.										PACKAGING OPTION PART NO.											
TRAY	TUBE WITHOUT CAP	TUBE WITH CAP	CKT SIZE	VOID POSITION	PLATING TYPE	DIMENSION					TRAY	TUBE WITHOUT CAP	TUBE WITH CAP	CKT SIZE	VOID POSITION	PLATING TYPE	DIMENSION				
						A	B	M	P	E							A	B	M	P	E
F	87911-4007		40		1	50.80	48.26	8.13	2.79	2.61		87911-5207		52		1	66.04	63.50	8.13	2.79	2.61
	87911-4008		40		2	50.80	48.26	8.13	2.79	2.61		87911-5208		52		2	66.04	63.50	8.13	2.79	2.61
	87911-4009		40		3	50.80	48.26	8.13	2.79	2.61		87911-5209		52		3	66.04	63.50	8.13	2.79	2.61
	87911-4207		42		1	53.34	50.80	8.13	2.79	2.61		87911-5407		54		1	68.58	66.04	8.13	2.79	2.61
	87911-4208		42		2	53.34	50.80	8.13	2.79	2.61		87911-5408		54		2	68.58	66.04	8.13	2.79	2.61
E	87911-4209		42		3	53.34	50.80	8.13	2.79	2.61		87911-5409		54		3	68.58	66.04	8.13	2.79	2.61
	87911-4407		44		1	55.88	53.34	8.13	2.79	2.61		87911-5607		56		1	71.12	68.58	8.13	2.79	2.61
	87911-4408		44		2	55.88	53.34	8.13	2.79	2.61		87911-5608		56		2	71.12	68.58	8.13	2.79	2.61
	87911-4409		44		3	55.88	53.34	8.13	2.79	2.61		87911-5609		56		3	71.12	68.58	8.13	2.79	2.61
D	87911-4607		46		1	58.42	55.88	8.13	2.79	2.61		87911-5807		58		1	73.66	71.12	8.13	2.79	2.61
	87911-4608		46		2	58.42	55.88	8.13	2.79	2.61		87911-5808		58		2	73.66	71.12	8.13	2.79	2.61
	87911-4609		46		3	58.42	55.88	8.13	2.79	2.61		87911-5809		58		3	73.66	71.12	8.13	2.79	2.61
	87911-4807		48		1	60.96	58.42	8.13	2.79	2.61		87911-6007		60		1	76.20	73.66	8.13	2.79	2.61
	87911-4808		48		2	60.96	58.42	8.13	2.79	2.61		87911-6008		60		2	76.20	73.66	8.13	2.79	2.61
C	87911-4809		48		3	60.96	58.42	8.13	2.79	2.61		87911-6009		60		3	76.20	73.66	8.13	2.79	2.61
	87911-5007		50		1	63.50	60.96	8.13	2.79	2.61		87911-6207		62		1	78.74	76.20	8.13	2.79	2.61
	87911-5008		50		2	63.50	60.96	8.13	2.79	2.61		87911-6208		62		2	78.74	76.20	8.13	2.79	2.61
	87911-5009		50		3	63.50	60.96	8.13	2.79	2.61		87911-6209		62		3	78.74	76.20	8.13	2.79	2.61

PDR#1872.ADD 879112610 EC NO. S2009-0252 DRAWN: MCHONG 2008/10/15 CHKD: SKANG 2008/10/16 APPR: HLONG 2008/10/16 REV DESCRIPTION	QUALITY SYMBOLS	GENERAL TOLERANCES (UNLESS SPECIFIED) 4 PLACES ± --- ± --- 3 PLACES ± --- ± --- 2 PLACES ± 0.20 ± --- 1 PLACE ± --- ± --- ANGULAR ± 3° DRAFT WHERE APPLICABLE MUST REMAIN WITHIN DIMENSIONS	DIMENSION STYLE	SCALE	DESIGN UNITS	THIRD ANGLE PROJECTION	
	▽=0		MM ONLY	NTS	METRIC		
	▽=0		DRAWN BY	DATE	TITLE	CUSTOM HEADER	
			CHECKED BY	DATE		C-GRID, DUAL ROW HEADER	
		APPROVED BY	DATE		SINGLE WAFER, R/A		
		MATERIAL NO.			MOLEX INCORPORATED		
		SEE TABLE			DOCUMENT NO.	SHEET NO.	
					SD-87911-037	4 OF 5	
					THIS DRAWING CONTAINS INFORMATION THAT IS PROPRIETARY TO MOLEX INCORPORATED AND SHOULD NOT BE USED WITHOUT WRITTEN PERMISSION		



F	PACKAGING OPTION PART NO.					DIMENSION					5	PACKAGING OPTION PART NO.					DIMENSION					1		
	TRAY	TUBE WITHOUT CAP	TUBE WITH CAP	CKT SIZE	VOID POSITION	PLATING TYPE	A	B	M	P		E	TRAY	TUBE WITHOUT CAP	TUBE WITH CAP	CKT SIZE	VOID POSITION	PLATING TYPE	A	B	M		P	E
-----	87911-6408	-----	64	-----	2	81.28	78.74	8.13	2.79	2.61	-----	87911-7608	-----	76	-----	2	96.52	93.98	8.13	2.79	2.61			
-----	87911-6409	-----	64	-----	3	81.28	78.74	8.13	2.79	2.61	-----	87911-7609	-----	76	-----	3	96.52	93.98	8.13	2.79	2.61			
-----	87911-6607	-----	66	-----	1	83.82	81.28	8.13	2.79	2.61	-----	87911-7807	-----	78	-----	1	99.06	96.52	8.13	2.79	2.61			
-----	87911-6608	-----	66	-----	2	83.82	81.28	8.13	2.79	2.61	-----	87911-7808	-----	78	-----	2	99.06	96.52	8.13	2.79	2.61			
-----	87911-6609	-----	66	-----	3	83.82	81.28	8.13	2.79	2.61	-----	87911-7809	-----	78	-----	3	99.06	96.52	8.13	2.79	2.61			
-----	87911-6807	-----	68	-----	1	86.36	83.82	8.13	2.79	2.61	-----	87911-8007	-----	80	-----	1	101.60	99.06	8.13	2.79	2.61			
-----	87911-6808	-----	68	-----	2	86.36	83.82	8.13	2.79	2.61	-----	87911-8008	-----	80	-----	2	101.60	99.06	8.13	2.79	2.61			
-----	87911-6809	-----	68	-----	3	86.36	83.82	8.13	2.79	2.61	-----	87911-8009	-----	80	-----	3	101.60	99.06	8.13	2.79	2.61			
-----	87911-7007	-----	70	-----	1	88.90	86.36	8.13	2.79	2.61														
-----	87911-7008	-----	70	-----	2	88.90	86.36	8.13	2.79	2.61														
-----	87911-7009	-----	70	-----	3	88.90	86.36	8.13	2.79	2.61														
-----	87911-7207	-----	72	-----	1	91.44	88.90	8.13	2.79	2.61														
-----	87911-7208	-----	72	-----	2	91.44	88.90	8.13	2.79	2.61														
-----	87911-7209	-----	72	-----	3	91.44	88.90	8.13	2.79	2.61														
-----	87911-7407	-----	74	-----	1	93.98	91.44	8.13	2.79	2.61														
-----	87911-7408	-----	74	-----	2	93.98	91.44	8.13	2.79	2.61														
-----	87911-7409	-----	74	-----	3	93.98	91.44	8.13	2.79	2.61														

PDR#1872.ADD 879112610 EC NO. S2009-0252 DRAWN: WCHONG 2008/10/15 CHKD: SKANG 2008/10/16 APPR: HLONG 2008/10/16	QUALITY SYMBOLS ▽=0 ▽=0	GENERAL TOLERANCES (UNLESS SPECIFIED) 4 PLACES ± --- ± --- 3 PLACES ± --- ± --- 2 PLACES ± 0.20 ± --- 1 PLACE ± --- ± --- ANGULAR ± 3 °	DIMENSION STYLE MM ONLY DRAWN BY SKL IM01 DATE 2006/01/24 CHECKED BY PATEY DATE 2006/02/08 APPROVED BY PATEY DATE 2006/02/08	SCALE NTS DESIGN UNITS METRIC THIRD ANGLE PROJECTION	TITLE CUSTOM HEADER C-GRID, DUAL ROW HEADER SINGLE WAFER, R/A	MOLEX INCORPORATED	MATERIAL NO. SEE TABLE DOCUMENT NO. SD-87911-037	SHEET NO. 5 OF 5