

## Excellent Integrated System Limited

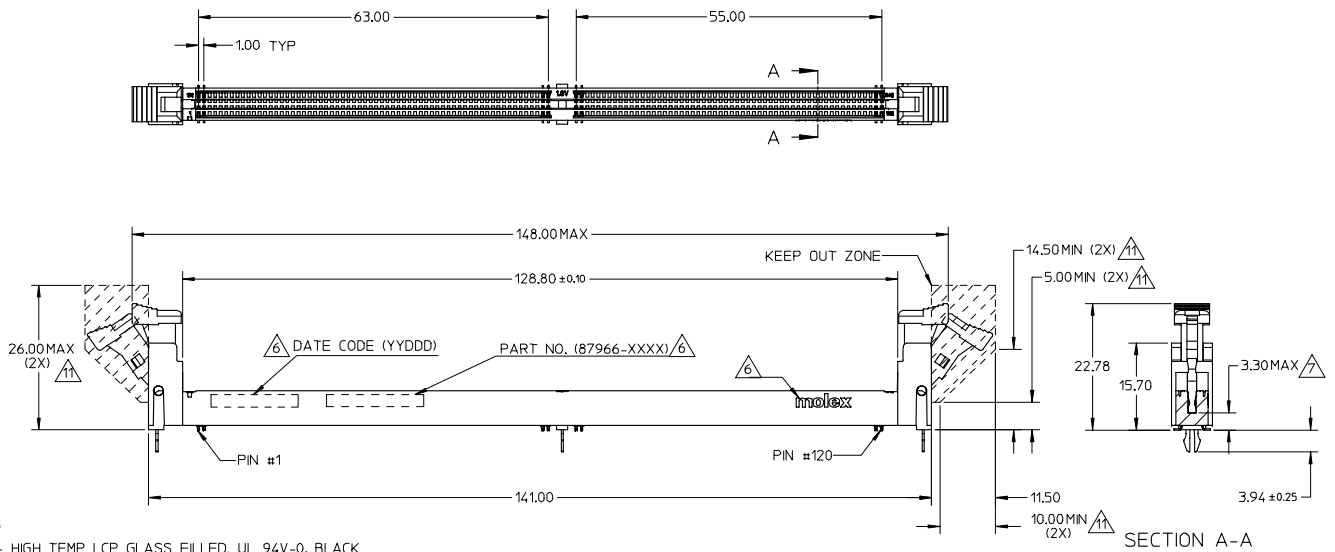
Stocking Distributor

Click to view price, real time Inventory, Delivery & Lifecycle Information:

[Molex Connector Corporation](#)  
[0879660032](#)

For any questions, you can email us directly:

[sales@integrated-circuit.com](mailto:sales@integrated-circuit.com)



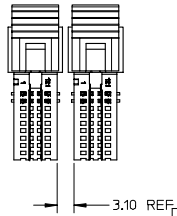
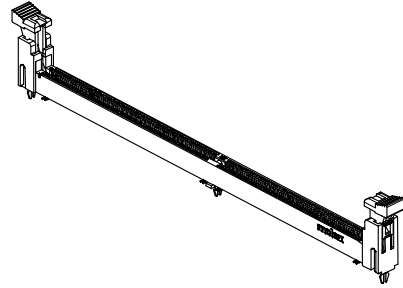
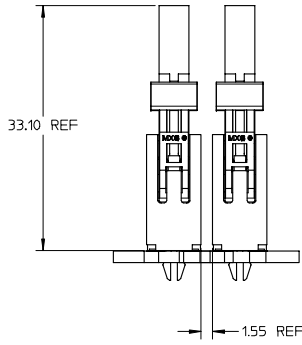
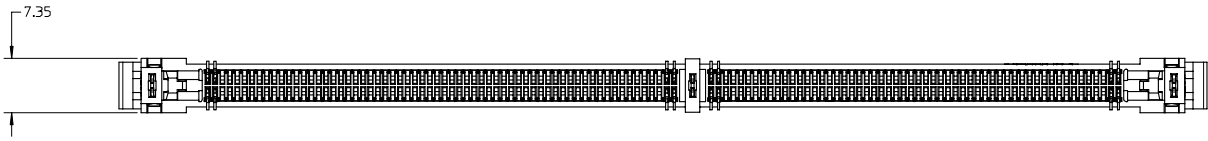
NOTES:

1. MATERIALS  
HOUSING - HIGH TEMP LCP GLASS FILLED, UL 94V-0, BLACK  
EJECTORS - HIGH TEMP NYLON GLASS FILLED, UL 94V-0, BLACK  
TERMINALS - COPPER ALLOY
2. PLATING OPTION - PLS REFER TO SHEET 5.
3. CARD SLOT ACCEPTS 1.27±0.10MM MODULE THICKNESS, (MEASURED OVER PC PADS)
4. RECOMMENDED MODULE LAYOUT SHALL BE AS PER JEDEC MO-237. PLS REFER TO SHEET 3.
5. PRODUCT IS PACKED INTO TRAYS.
6. MOLEX LOGO, DATE CODE & PART NO. INDICATED ON HOUSING.
7. DIMM MODULE SEATING PLANE FROM TOP OF PCB.
8. COPLANARITY FOR SOLDER TAILS SHALL NOT EXCEED 0.20MM.
9. REFER TO PRODUCT SPEC. PS-87966-001 FOR PERFORMANCE SPECIFICATIONS.
10. THE KEEP OUT AREA IS THE AREA WHERE THE CONNECTOR IS MOUNTED ONTO THE PCB, WHICH DOES NOT INCLUDE THE LATCH.
11. KEEP OUT ZONE AS PER JEDEC SO-001.
12. CONTACT MOLEX FOR AVAILABILITY OF PRODUCT OPTIONS.

REVISED PAD SIZE EC NO: S2007-0667 DRAWN/CHEK CHKD/SRRAMESH APPR/SILENI	DESCRIPTION 2007/02/08 2007/02/08 2007/02/09	QUALITY SYMBOLS	GENERAL TOLERANCES (UNLESS SPECIFIED)	DIMENSION STYLE	SCALE	DESIGN UNITS	THIRD ANGLE PROJECTION	
		▽=0	mm INCH	MM ONLY	NTS	METRIC		
		▽=0	4 PLACES ± --- ± ---	DRAWN BY DATE	TITLE	DDR2 DIMM, 1.00MM PITCH 240 CKTS, SMT		
			3 PLACES ± --- ± ---	CHEKED BY DATE	MATERIAL NO. MOLEX INCORPORATED			
		2 PLACES ± 0.10 ± ---	APPROVED BY DATE	SEE TABLE	SD-87966-002	SHEET NO. 1 OF 5		
		1 PLACE ± --- ± ---	GGLEE 2005/11/21	THIS DRAWING CONTAINS INFORMATION THAT IS PROPRIETARY TO MOLEX INCORPORATED AND SHOULD NOT BE USED WITHOUT WRITTEN PERMISSION				
DRAFT WHERE APPLICABLE MUST REMAIN WITHIN DIMENSIONS								

10 9 8 7 6 5 4 3 2 1

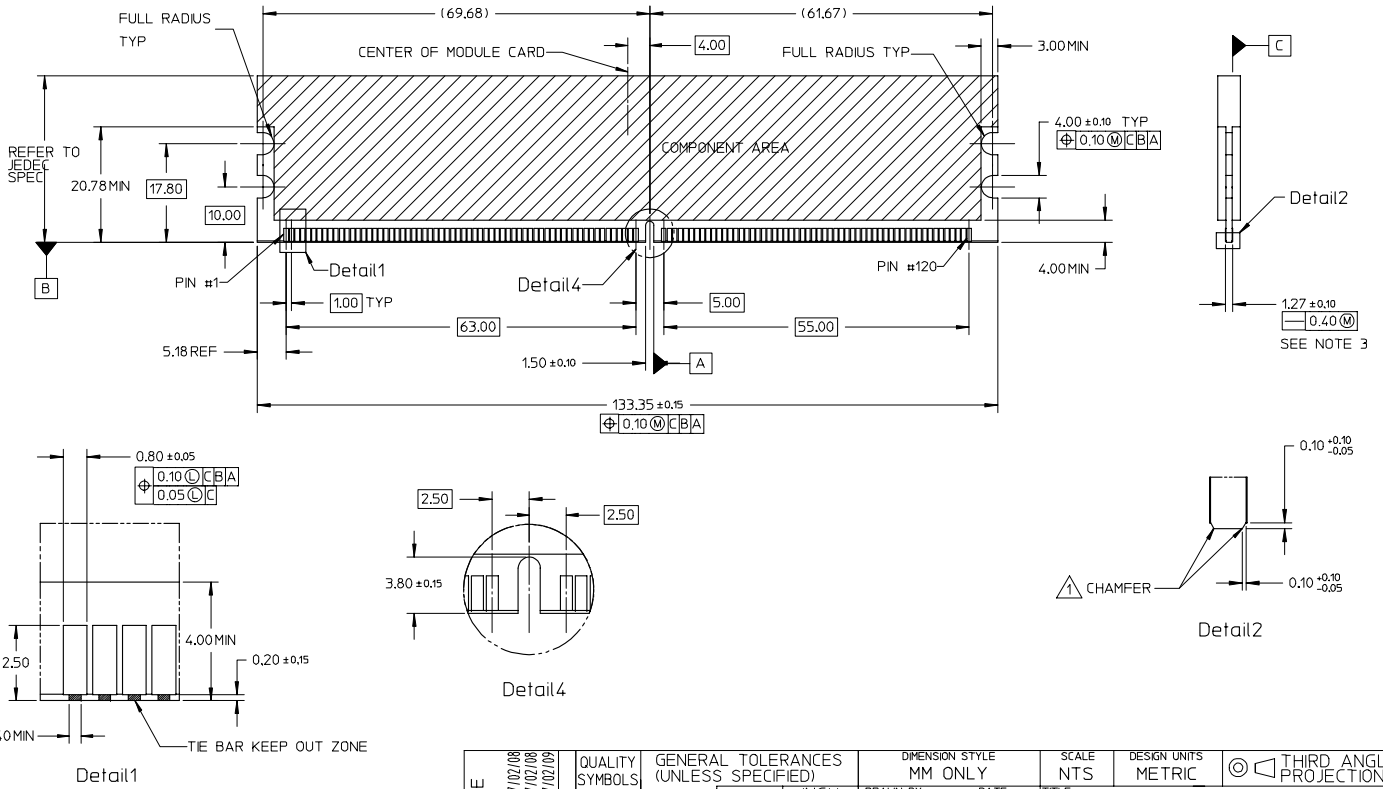
F  
E  
D  
C  
B  
A



REVISED PAD SIZE EC NO: S2007-0667 DRAWN/CHEK 2007/02/08 CHKD/SRRAMESH 2007/02/08 APPR/SILENI 2007/02/09 B1	QUALITY SYMBOLS ▽=0 ▽=0	GENERAL TOLERANCES (UNLESS SPECIFIED)		DIMENSION STYLE MM ONLY	SCALE NTS	DESIGN UNITS METRIC	THIRD ANGLE PROJECTION
		4 PLACES ± --- ± ---	3 PLACES ± --- ± ---	DRAWN BY CCTEH	DATE 2005/10/19	TITLE DDR2 DIMM, 1.00MM PITCH 240 CKTS, SMT	
		2 PLACES ± 0.10 ± ---	1 PLACE ± --- ± ---	CHECKED BY SRRAMESH	DATE 2005/11/21		
		ANGULAR ± 1 °		APPROVED BY GGLEE	DATE 2005/11/21		
DRAFT WHERE APPLICABLE MUST REMAIN WITHIN DIMENSIONS		MATERIAL NO. SEE TABLE	DOCUMENT NO. SD-87966-002	SHEET NO. 2 OF 5			

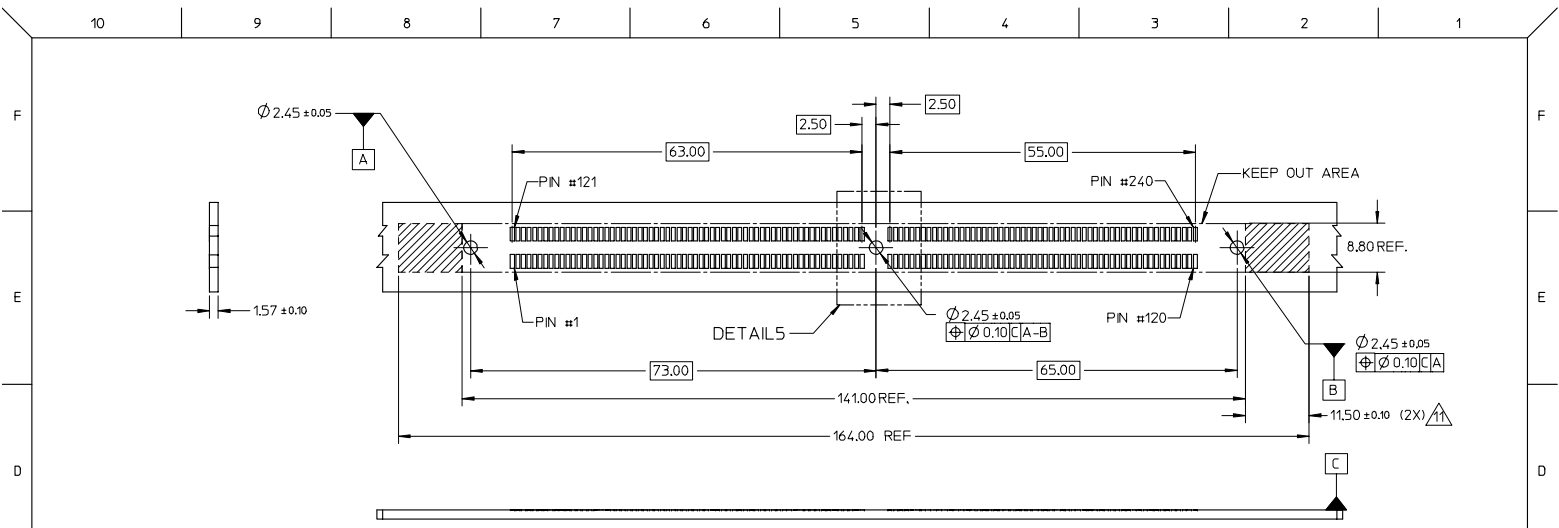
9 8 7 6 5 4 3 2 1

RECOMMENDED MODULE LAYOUT

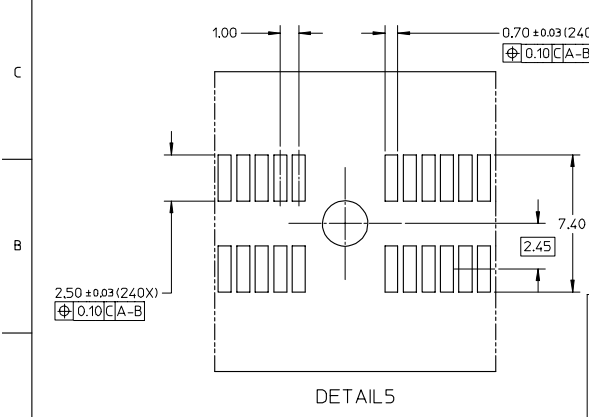


NOTES:  
1. MODULE CARD USED IN PRODUCT TESTING ARE CHAMFER.

REVISED PAD SIZE EC NO: S2007-0667 DRAWN/CHEK CHKD/SRRAMESH APPR/SILENI 2007/02/08 2007/02/08 2007/02/09	QUALITY SYMBOLS	GENERAL TOLERANCES (UNLESS SPECIFIED)		DIMENSION STYLE MM ONLY		SCALE NTS	DESIGN UNITS METRIC	THIRD ANGLE PROJECTION
	▽=0	4 PLACES ± ---	± ---	mm	INCH	DRAWN BY CCTEH	DATE 2005/10/19	TITLE DDR2 DIMM, 100MM PITCH 240 CKTS, SMT
	▽=0	3 PLACES ± ---	± ---			CHECKED BY SRRAMESH	DATE 2005/11/21	MATERIAL NO. MOLEX INCORPORATED
		2 PLACES ± 0.10	± ---			APPROVED BY GGLLEE	DATE 2005/11/21	DOCUMENT NO. SD-87966-002
		1 PLACE ± ---	± ---	ANGULAR ± 1 °		SEE TABLE		SHEET NO. 3 OF 5
		DRAFT WHERE APPLICABLE MUST REMAIN WITHIN DIMENSIONS		SIZE A3		THIS DRAWING CONTAINS INFORMATION THAT IS PROPRIETARY TO MOLEX INCORPORATED AND SHOULD NOT BE USED WITHOUT WRITTEN PERMISSION		



RECOMMENDED STENCIL THICKNESS = 150µM.



REVISED PAD SIZE EC NO: S2007-0667 DRAWN: CTEH 2007/02/08 CHKD: SRAMESH 2007/02/08 APPR: SILENI 2007/02/09 B1	QUALITY SYMBOLS	GENERAL TOLERANCES (UNLESS SPECIFIED)	DIMENSION STYLE	SCALE	DESIGN UNITS	THIRD ANGLE PROJECTION
	▽=0 ▽=0	mm INCH 4 PLACES ± --- ± --- 3 PLACES ± --- ± --- 2 PLACES ± 0.10 ± --- 1 PLACE ± --- ± --- ANGULAR ± 1 °	MM ONLY	NTS	METRIC	DRAWN BY DATE CTEH 2005/10/19 CHECKED BY DATE SRAMESH 2005/11/21 APPROVED BY DATE GGLEE 2005/11/21
	DRAFT WHERE APPLICABLE MUST REMAIN WITHIN DIMENSIONS	MATERIAL NO. SEE TABLE	TITLE DDR2 DIMM, 100MM PITCH 240 CKTS, SMT	MOLEX INCORPORATED	SHEET NO. 4 OF 5	
	SIZE A3	DOCUMENT NO. SD-87966-002	THIS DRAWING CONTAINS INFORMATION THAT IS PROPRIETARY TO MOLEX INCORPORATED AND SHOULD NOT BE USED WITHOUT WRITTEN PERMISSION			

10 9 8 7 6 5 4 3 2 1

ASSEMBLY PART NO.	VOLTAGE KEY POS.	PLATING	LATCH COLOR	LUBRICATION
87966-0001	CENTRE 1.8V	0.76μM (30μ IN) MIN. GOLD ON CONTACT	BLACK	NO
87966-0002		2.54μM (100μ IN) MIN. TIN ON SOLDER TAILS		YES
		1.27μM (50μ IN) MIN. NICKEL UNDERPLATE		

REVISED PAD SIZE EC NO: S2007-0667 DRAWN BY: CCTEH 2007/02/08 CHKD: SRRAMESH 2007/02/08 APPR: SILENI 2007/02/09 B1	QUALITY SYMBOLS	GENERAL TOLERANCES (UNLESS SPECIFIED)		DIMENSION STYLE MM ONLY		SCALE NTS	DESIGN UNITS METRIC	THIRD ANGLE PROJECTION	
	$\nabla=0$ $\nabla=0$	4 PLACES	± ---	± ---	DRAWN BY	DATE	TITLE		
		3 PLACES	± ---	± ---	CCTEH	2005/10/19	DDR2 DIMM, 100MM PITCH 240 CKTS, SMT		
		2 PLACES	± 0.10	± ---	CHECKED BY	DATE	MOLEX INCORPORATED		
	1 PLACE	± ---	± ---	SRRAMESH	2005/11/21	MATERIAL NO. SEE TABLE			
		ANGULAR ± 1 °		APPROVED BY	DATE	DOCUMENT NO.		SHEET NO.	
		DRAFT WHERE APPLICABLE MUST REMAIN WITHIN DIMENSIONS		GGLLEE	2005/11/21	SD-87966-002		5 OF 5	
		THIS DRAWING CONTAINS INFORMATION THAT IS PROPRIETARY TO MOLEX INCORPORATED AND SHOULD NOT BE USED WITHOUT WRITTEN PERMISSION							

9 8 7 6 5 4 3 2 1