

Excellent Integrated System Limited

Stocking Distributor

Click to view price, real time Inventory, Delivery & Lifecycle Information:

[Molex Connector Corporation](#)
[0894000620](#)

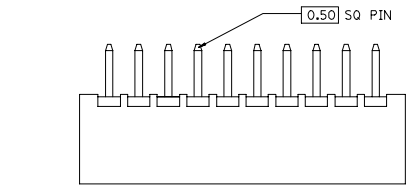
For any questions, you can email us directly:

sales@integrated-circuit.com

10 9 8 7 6 5 4 3 2 1

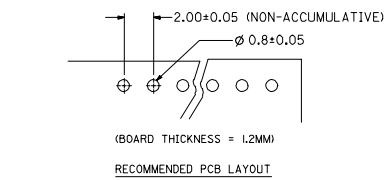
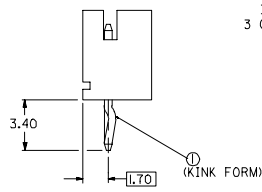
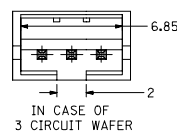
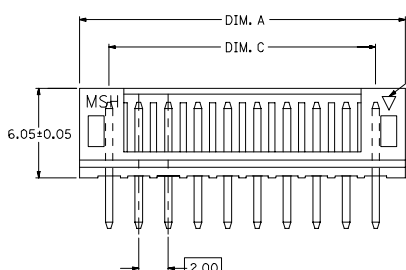
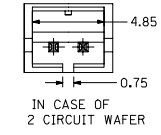
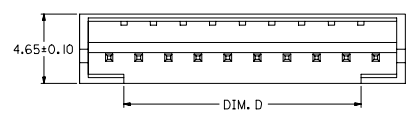
F
E
D
C
B
A

F
E
D
C
B
A



PART NO. LEGEND
89400 - ** 2

CKT SIZE ——— **COLOR OPTION**
0 - NATURAL (WHITE)
1 - BLACK
2 - RED
3 - YELLOW
4 - BLUE
6 - GREEN



CIRCUITS	ORDER NO.	DIM. C	DIM. D	DIM. A
2	89400-022*	2.00	0.75	6.00
3	89400-032*	4.00	2.00	8.00
4	89400-042*	6.00	4.00	10.00
5	89400-052*	8.00	6.00	12.00
6	89400-062*	10.00	8.00	14.00
7	89400-072*	12.00	10.00	16.00
8	89400-082*	14.00	12.00	18.00
9	89400-092*	16.00	14.00	20.00
10	89400-102*	18.00	16.00	22.00
11	89400-112*	20.00	18.00	24.00
12	89400-122*	22.00	20.00	26.00
13	89400-132*	24.00	22.00	28.00
14	89400-142*	26.00	24.00	30.00
15	89400-152*	28.00	26.00	32.00
16	89400-162*	30.00	28.00	34.00

KINK TO BE APPLIED AS FOLLOW

CKT NO.	CKT							
	1	2	3	4	5	N-2	N-1	N
6 CKT (OR OVER ALL)	①	—	—	—	—	—	—	①
5 CKT	①	—	—	①	—	—	—	—
4 CKT	①	—	①	—	—	—	—	—
3 CKT	①	①	—	—	—	—	—	—
2 CKT	①	①	—	—	—	—	—	—

- NOTE:**
- MATERIALS : HOUSING - NYLON (PA66), UL94 V-0
COLOR : SEE OPTION
TERMINAL - BRASS
 - FINISHES : TERMINAL - TN THICKNESS 127-254 MICROMETER OVER
NICKEL THICKNESS 254 MICROMETER MIN OVERALL
COPPER THICKNESS 107 MICROMETER MIN OVERALL
 - PRODUCT SPECIFICATION : PS-87369-0002
 - BULK PACK IN PVC BAG WITH 1000 PCS PER BAG.

NEW RELEASE EC NO: SH2006-0288 2005/12/07 CHKDHARNEY 2005/12/08 APPR:GHEH 2005/12/09	QUALITY SYMBOLS ▽=0 ▽=0	GENERAL TOLERANCES (UNLESS SPECIFIED)		DIMENSION STYLE IN/MM		SCALE	DESIGN UNITS INCH	THIRD ANGLE PROJECTION
		4 PLACES ± --- ± --- 3 PLACES ± --- ± --- 2 PLACES ± 0.25 ± --- 1 PLACE ± 0.25 ± ---	mm INCH	DRAWN BY SAM SHIN	DATE 1998/10/22	TITLE 2.0MM WIRE-BOARD STRAIGHT HEADER WITH COINING		
		ANGULAR ± 2 °		CHECKED BY	DATE	MOLEX INCORPORATED		
		DRAFT WHERE APPLICABLE MUST REMAIN WITHIN DIMENSIONS		MATERIAL NO. SEE TABLE	DOCUMENT NO. SD-89400-**-2*	SHEET NO. 1 OF 1		

9 8 7 6 5 4 3 2 1