

## Excellent Integrated System Limited

Stocking Distributor

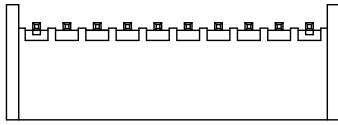
Click to view price, real time Inventory, Delivery & Lifecycle Information:

[Molex Connector Corporation](#)  
[0894011410](#)

For any questions, you can email us directly:

[sales@integrated-circuit.com](mailto:sales@integrated-circuit.com)

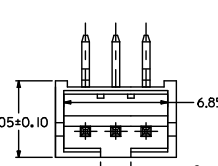
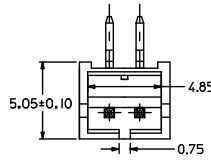
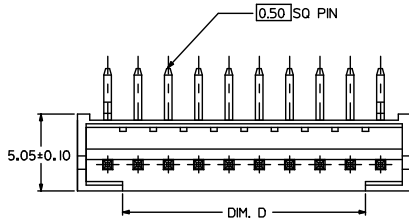
10 9 8 7 6 5 4 3 2 1



KINK TO BE APPLIED AS FOLLOW

CKT NO.	1	2	3	4	5	N-2	N-1	N
6 CKT	①	—	—	—	—	—	—	①
5 CKT	①	—	—	①	—	—	—	—
4 CKT	①	—	—	①	—	—	—	—
3 CKT	①	—	①	—	—	—	—	—
2 CKT	①	①	—	—	—	—	—	—

CIRCUITS	ORDER NO.	DIM. C	DIM. D	DIM. A	REMARK
2	89401-021*	2.00	0.75	6.00	
3	89401-031*	4.00	2.00	8.00	
4	89401-041*	6.00	4.00	10.00	
5	89401-051*	8.00	6.00	12.00	
	89401-0520				VOID PIN 4
6	89401-061*	10.00	8.00	14.00	
7	89401-071*	12.00	10.00	16.00	
8	89401-081*	14.00	12.00	18.00	
9	89401-091*	16.00	14.00	20.00	
10	89401-101*	18.00	16.00	22.00	
	89401-1020				VOID PIN 7
11	89401-111*	20.00	18.00	24.00	
12	89401-121*	22.00	20.00	26.00	
13	89401-131*	24.00	22.00	28.00	
14	89401-141*	26.00	24.00	30.00	
15	89401-151*	28.00	26.00	32.00	
16	89401-161*	30.00	28.00	34.00	

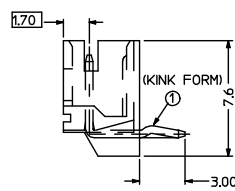
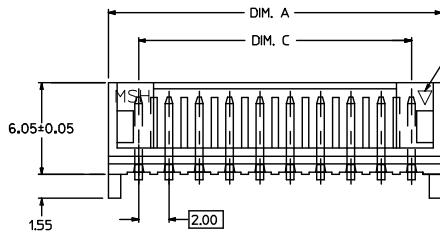


PART NO. LEGEND

89401 - \*\* 1(2) \*

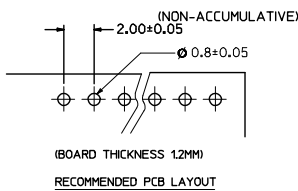
CKT SIZE

COLOR OPTION  
0 - NATURAL (WHITE)  
2 - RED  
3 - YELLOW  
4 - BLUE  
6 - GREEN  
7 - BLACK



NOTE:

1. PRODUCT SPEC. PS-87369-0001 APPLIES.
2. BULK PACK IN PVC BAG WITH 1000 PCS PER BAG.
3. MATERIAL :  
HOUSING - NYLON 66 94V0.COLOR: SEE OPTION  
TERMINAL - BRASS
4. FINISH :  
TERMINAL - TIN THICKNESS 1.27-2.54 MICROMETER OVER  
NICKEL THICKNESS 2.54 MICROMETER MIN OVERALL  
COPPER THICKNESS 1.07 MICROMETER MIN OVERALL



(BOARD THICKNESS 1.2MM)

RECOMMENDED PCB LAYOUT

NEW RELEASE	EC NO: SH2006-0287	2005/12/06
DRW: NPH	CHK: HARVEY	2005/12/08
APP: GCHEN		2005/12/09

QUALITY SYMBOLS	DESCRIPTION
▽=0	
▽=0	

GENERAL TOLERANCES (UNLESS SPECIFIED)	
	mm
4 PLACES	± 0.25
3 PLACES	± 0.25
2 PLACES	± 0.25
1 PLACE	± 0.25
ANGULAR	± 3°

DIMENSION STYLE	
MM ONLY	
DRAWN BY	DATE
SAM SHIN	1998/10/22
CHECKED BY	DATE
APPROVED BY	DATE
MATERIAL NO.	SEE CHART

SCALE	1:4
DESIGN UNITS	METRIC
THIRD ANGLE PROJECTION	
2.0MM WIRE-BOARD RIGHT ANGLE HEADER	
MOLEX INCORPORATED	
DOCUMENT NO.	SD-89401-***1*
SHEET NO.	1 OF 1

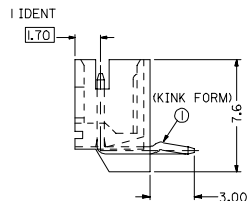
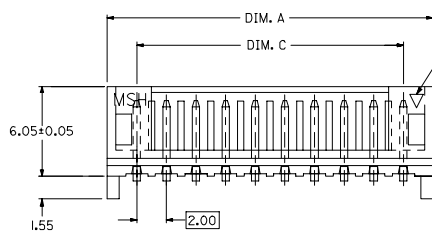
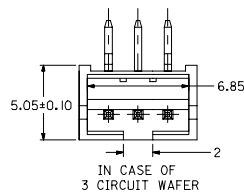
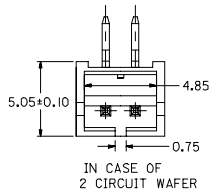
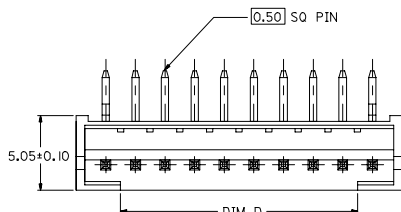
9 8 7 6 5 4 3 2 1

10 9 8 7 6 5 4 3 2 1

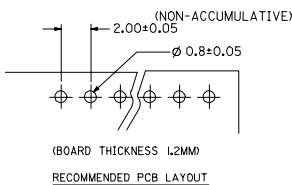
KINK TO BE APPLIED AS FOLLOW,

CKT NO.	1	2	3	4	5	N-2	N-1	N
6 CKT	①	—	—	—	—	—	—	①
5 CKT	②	—	—	—	①	—	—	—
4 CKT	③	—	—	①	—	—	—	—
3 CKT	④	—	①	—	—	—	—	—
2 CKT	⑤	①	—	—	—	—	—	—

CIRCUITS	ORDER NO.	DIM. C	DIM. D	DIM. A
2	89401-0210	2.00	0.75	6.00
3	89401-0310	4.00	2.00	8.00
4	89401-0410	6.00	4.00	10.00
5	89401-0510	8.00	6.00	12.00
6	89401-0610	10.00	8.00	14.00
7	89401-0710	12.00	10.00	16.00
8	89401-0810	14.00	12.00	18.00
9	89401-0910	16.00	14.00	20.00
10	89401-1010	18.00	16.00	22.00
11	89401-1110	20.00	18.00	24.00
12	89401-1210	22.00	20.00	26.00
13	89401-1310	24.00	22.00	28.00
14	89401-1410	26.00	24.00	30.00
15	89401-1510	28.00	26.00	32.00



- NOTE:
1. PRODUCT SPEC. PS-87369-0001 APPLIES.
  2. BULK PACK IN PVC BAG WITH 1000 PCS PER BAG.
  3. MATERIAL :  
HOUSING - NYLON 66 94V0, NATURAL  
TERMINAL - TIN PLATED NICKEL



NEW RELEASE EC NO. SH2006-0287 2005/12/06 DR. V. K. J. J. 2005/12/08 CH. K. H. R. V. 2005/12/09 APPR. G. H. N.	QUALITY SYMBOLS  ▽=0 ▽=0	GENERAL TOLERANCES (UNLESS SPECIFIED)	DIMENSION STYLE		SCALE	DESIGN UNITS	THIRD ANGLE PROJECTION		
			IN/MM			INCH			
			mm	INCH	DRAWN BY	DATE		TITLE  2.0MM WIRE TO BOARD RIGHT ANGLE	
			4 PLACES	±---	±---	SAM SHIN			1998/10/22
			3 PLACES	±---	±---	CHECKED BY			DATE
			2 PLACES	±---	±---	APPROVED BY		DATE	MOLEX MOLEX INCORPORATED
			1 PLACE	±---	±---				
			ANGULAR ±---°		MATERIAL NO.			DOCUMENT NO.	
			DRAFT WHERE APPLICABLE MUST REMAIN WITHIN DIMENSIONS		SEE TABLE			SD-89401-**-10	1 OF 1
					SIZE 3 THIS DRAWING CONTAINS INFORMATION THAT IS PROPRIETARY TO MOLEX INCORPORATED AND SHOULD NOT BE USED WITHOUT WRITTEN PERMISSION				