



Distributor of Molex Connector Corporation: Excellent Integrated System Limited

Datasheet of 0905842316 - 1.27MM PF LOPRO IDT B-IN STKT

Contact us: sales@integrated-circuit.com Website: www.integrated-circuit.com

Excellent Integrated System Limited

Stocking Distributor

Click to view price, real time Inventory, Delivery & Lifecycle Information:

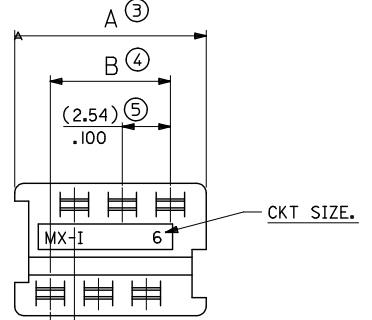
[Molex Connector Corporation](#)

[0905842316](#)

For any questions, you can email us directly:

sales@integrated-circuit.com

90584	--*26	26	(35.53)/1.399	(31.75)/1.250	(30.48)/1.200
	--*24	24	(32.99)/1.299	(29.21)/1.150	(27.94)/1.100
	--*22	22	(30.45)/1.199	(26.67)/1.050	(25.40)/1.000
	--*20	20	(27.91)/1.099	(24.13)/.950	(22.86)/.900
	--*18	18	(25.37)/.999	(21.59)/.850	(20.32)/.800
	--*16	16	(22.83)/.899	(19.05)/.750	(17.78)/.700
	--*14	14	(20.29)/.799	(16.51)/.650	(15.24)/.600
	--*12	12	(17.75)/.699	(13.97)/.550	(12.70)/.500
	--*10	10	(15.21)/.599	(11.43)/.450	(10.16)/.400
	--*08	8	(12.67)/.499	(8.89)/.350	(7.62)/.300
	--*06	6	(10.13)/.399	(6.35)/.250	(5.08)/.200
90584	--*04	4	(7.59)/.299	(3.81)/.150	(2.54)/.100
PART NO.	CCT SIZE	DIMENSION A	DIMENSION B	DIMENSION C	



HOUSING

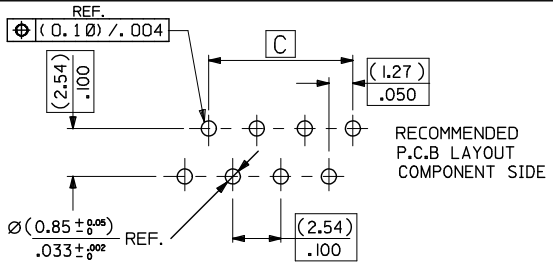
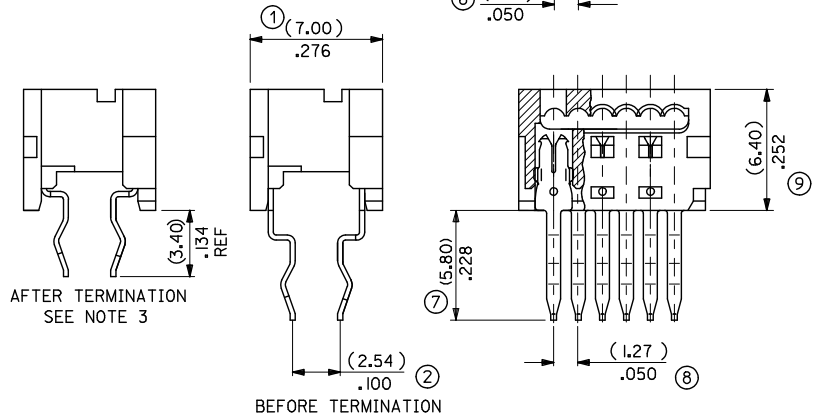
MATL. POLYESTER, RATED UL 94V-0, COLOUR WHITE.

IDT CONTACT

MATL : PHOSPHOR BRONZE (0.28)/.011 REF THICK.
PLATING : (2-4um) / 80-160u" TIN

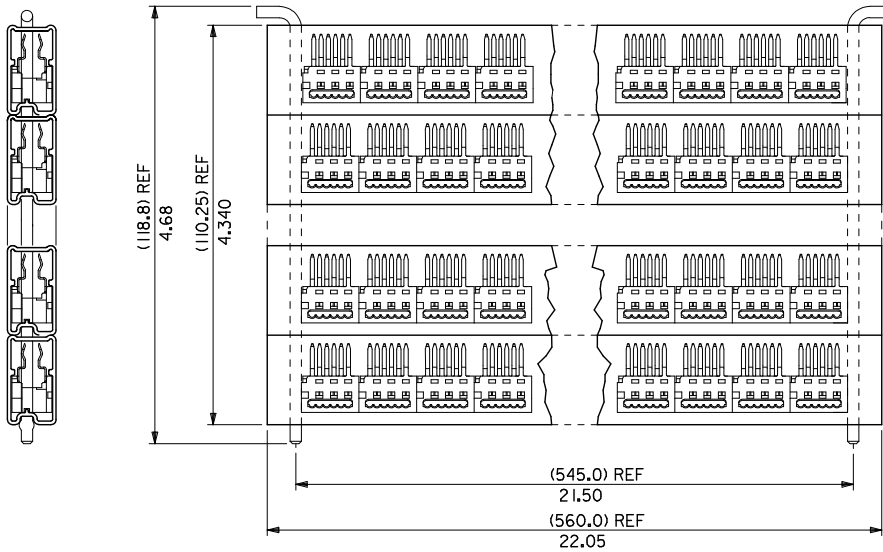
NOTES:

1. APPL. CLASS TO DIN 40040 HME (-25°C/+100°C)
 2. PRODUCT SPECIFICATION: PS-99020-0011
 3. WIRE TERMINATION SPEC: ES-99033-0002
 4. PACKAGING SPEC: PK-90584-001
- 90584-***
- 04 TO 26 = CKT SIZE.
 - 3= NO CIRCUITS VOIDED.
 - 4= CIRCUITS 4 & 5 VOIDED.
 - I= INDIVIDUAL TUBED ASSY
 - 2= STACKED TUBED ASSY - SEE SHEET 2
 - 8 = NON STANDARD TUBE OPTION - SEE SHEET 3
 - 9= NON STANDARD OPTION - SEE SHEET 3



ADDED NON STD TUBE EC NO: PG2015-0003 2014/07/07	QUALITY SYMBOLS ▽=0 ▽=0	GENERAL TOLERANCES (UNLESS SPECIFIED)		DIMENSION STYLE MM/IN		SCALE 5:1	DESIGN UNITS METRIC	THIRD ANGLE PROJECTION
		mm	INCH	DRAWN BY DMCNAMAR	DATE 2003/09/01	TITLE 1.27MM PF LOW PRO IDT BOARD-IN CONNECTOR		
DRAWN BY: RDRW/BS/RYNES CHKD: APPR: STIG/FFIN 2014/07/30	REV	4 PLACES	± ---	± ---	CHECKED BY DMAGUIRE	DATE 2003/09/01	MOLEX INCORPORATED	SHEET NO. 1 OF 3
		3 PLACES	± ---	± .010	APPROVED BY MWILHITE	DATE 2003/09/01		
		2 PLACES	± 0.25	± ---	MATERIAL NO. SEE CHART		DOCUMENT NO. SDA-90584	
		1 PLACE	± ---	± ---	SIZE A3		THIS DRAWING CONTAINS INFORMATION THAT IS PROPRIETARY TO MOLEX INCORPORATED AND SHOULD NOT BE USED WITHOUT WRITTEN PERMISSION	

10 9 8 7 6 5 4 3 2 1



STACKED TUBED ASSEMBLY

REVISION UPDATE EC NO: E2005-1027 DRAWN BY: SWEN 2005/05/10 CHKD: MORIARTY 2005/05/10 APPR: JDENNEHY 2005/05/26	QUALITY SYMBOLS	GENERAL TOLERANCES (UNLESS SPECIFIED)		DIMENSION STYLE		SCALE	DESIGN UNITS	THIRD ANGLE PROJECTION	
	$\nabla=0$ $\nabla=0$	mm	INCH	MM/IN		NTS	METRIC		
		4 PLACES ± --- ± ---		DRAWN BY	DATE	TITLE			
		3 PLACES ± --- ± .010		PW	1994/02/25	1.27MM PF LOW PRO IDT BOARD-IN CONNECTOR			
	2 PLACES ± 0.25 ± ---		CHECKED BY	DATE	MOLEX INCORPORATED				
	1 PLACE ± --- ± ---		MOR IARTY	2005/05/06	DOCUMENT NO. SDA-90584				
	ANGULAR ± 2 °		APPROVED BY	DATE	SHEET NO. 2 OF 3				
			JDENNEHY	2005/05/10	THIS DRAWING CONTAINS INFORMATION THAT IS PROPRIETARY TO MOLEX INCORPORATED AND SHOULD NOT BE USED WITHOUT WRITTEN PERMISSION				
			MATERIAL NO.		SEE SHEET 1				
			DRAFT WHERE APPLICABLE MUST REMAIN WITHIN DIMENSIONS		SIZE A3				

9 8 7 6 5 4 3 2 1