

Excellent Integrated System Limited

Stocking Distributor

Click to view price, real time Inventory, Delivery & Lifecycle Information:

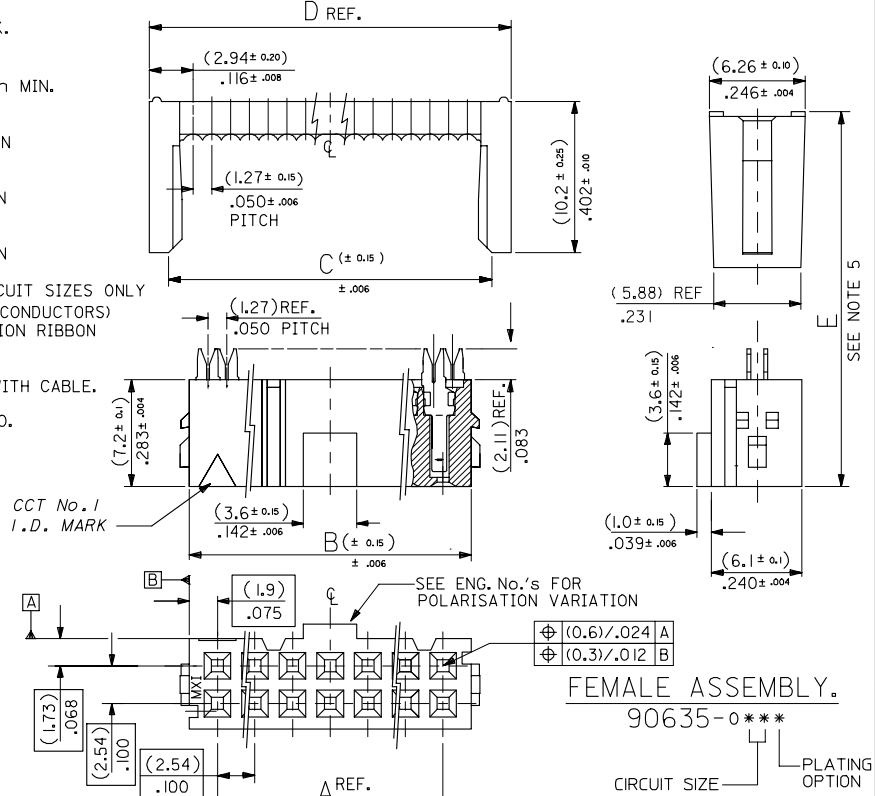
[Molex Connector Corporation](#)

[0906351242](#)

For any questions, you can email us directly:

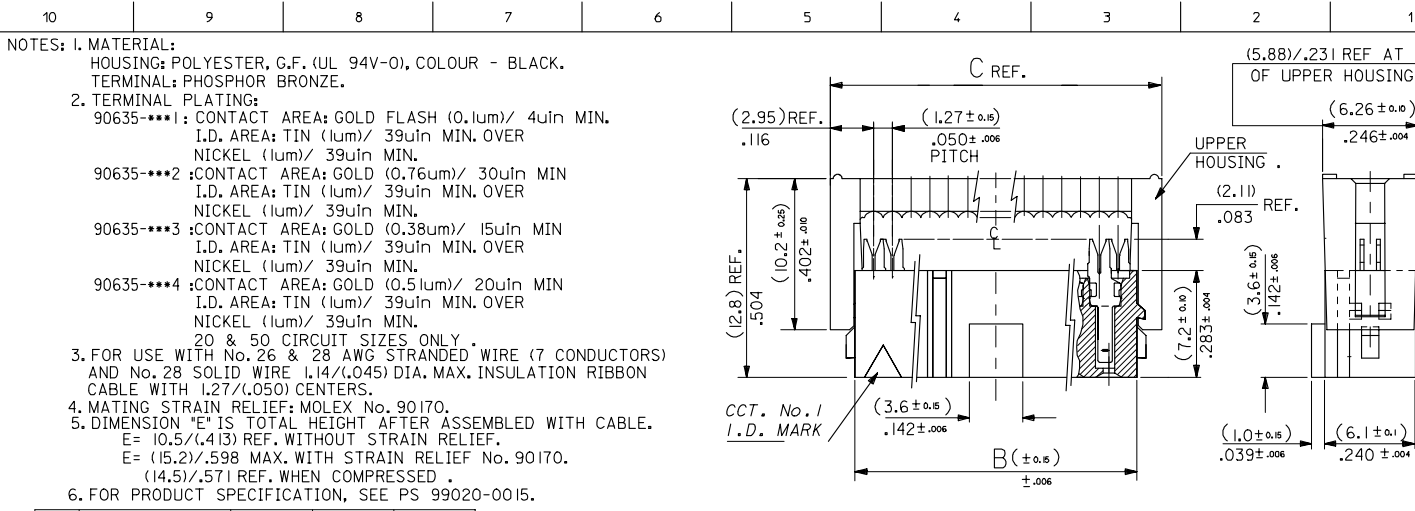
sales@integrated-circuit.com

- NOTES: 1. MATERIAL:
HOUSING: POLYESTER, G.F. (UL 94V-0), COLOUR - BLACK.
TERMINAL: PHOSPHOR BRONZE.
2. TERMINAL PLATING:
90635-***1: CONTACT AREA: GOLD FLASH (0.1um)/ 4uin MIN.
I.D. AREA: TIN (lum)/ 39uin MIN. OVER
NICKEL (lum)/ 39uin MIN.
90635-***2: CONTACT AREA: GOLD (0.76um)/ 30uin MIN
I.D. AREA: TIN (lum)/ 39uin MIN. OVER
NICKEL (lum)/ 39uin MIN.
90635-***3: CONTACT AREA: GOLD (0.38um)/ 15uin MIN
I.D. AREA: TIN (lum)/ 39uin MIN. OVER
NICKEL (lum)/ 39uin MIN.
90635-***4: CONTACT AREA: GOLD (0.5lum)/ 20uin MIN
I.D. AREA: TIN (lum)/ 39uin MIN. OVER
NICKEL (lum)/ 39uin MIN.. 20 & 50 CIRCUIT SIZES ONLY
3. FOR USE WITH No. 26 & 28 AWG STRANDED WIRE (7 CONDUCTORS)
AND No. 28 SOLID WIRE 1.14/(.045) DIA. MAX. INSULATION RIBBON
CABLE WITH 1.27/(.050) CENTERS.
4. MATING STRAIN RELIEF: MOLEX No. 90170.
5. DIMENSION "E" IS TOTAL HEIGHT AFTER ASSEMBLED WITH CABLE.
E = 10.5/(.413) REF. WITHOUT STRAIN RELIEF.
E = (15.2)/.598 MAX. WITH STRAIN RELIEF No. 90170.
(14.5)/.571 REF. WHEN COMPRESSED .
6. FOR PRODUCT SPECIFICATION, SEE PS 99020-0015.

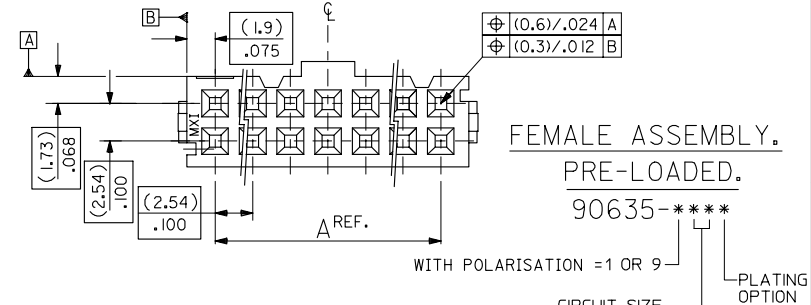


64	90635-#64*	(78.74) 3.100	(82.54) 3.250	(83.31) 3.280	(85.88) 3.381
60	90635-#60*	(73.66) 2.900	(77.46) 3.050	(78.23) 3.080	(80.80) 3.181
50	90635-#50*	(60.96) 2.400	(64.76) 2.55	(65.53) 2.580	(68.10) 2.681
40	90635-#40*	(48.26) 1.900	(52.06) 2.050	(52.83) 2.080	(55.40) 2.181
34	90635-#34*	(40.64) 1.600	(44.44) 1.750	(45.21) 1.780	(47.78) 1.881
30	90635-#30*	(35.56) 1.400	(39.36) 1.550	(40.13) 1.580	(42.70) 1.681
26	90635-#26*	(30.48) 1.200	(34.28) 1.350	(35.05) 1.380	(37.62) 1.481
24	90635-#24*	(27.94) 1.100	(31.74) 1.250	(32.51) 1.280	(35.08) 1.381
20	90635-#20*	(22.86) .900	(26.66) 1.050	(27.43) 1.080	(30.00) 1.181
16	90635-#16*	(17.78) .700	(21.58) .850	(22.35) .880	(24.92) .981
14	90635-#14*	(15.24) .600	(19.04) .750	(19.81) .780	(22.38) .881
10	90635-#10*	(10.16) .400	(13.96) .550	(14.73) .580	(17.30) .681
NO. OF EXT.	ENG. NO.	A	B	C	D REF.

REMOVED FOR INFORMATION FORM NO. 2007-0495 DRAWN BY: BRYAN BRYANES CHKD: APPRECIATION 2006/12/06 2006/12/07	QUALITY SYMBOLS ▽=0 ▽=0	GENERAL TOLERANCES (UNLESS SPECIFIED)		DIMENSION STYLE		SCALE	DESIGN UNITS	THIRD ANGLE PROJECTION
		mm	INCH	MM/IN	DATE	4:1	METRIC	THIRD ANGLE PROJECTION
		4 PLACES	± --- ± ---	DRAWN BY	POB	1990/09/25	TITLE	
		3 PLACES	± --- ± ---	CHECKED BY	JDENNEHY	2005/08/10	QIK FLECS SINGLE BEAM FEMALE ASSEMBLY	
		2 PLACES	± --- ± ---	APPROVED BY	JDENNEHY	2005/08/10	MOLEX INCORPORATED	
		1 PLACE	± --- ± ---	MATERIAL NO.	SEE CHART	SDA-90635	SHEET NO. 1 OF 3	
		ANGULAR	± --- °	THIS DRAWING CONTAINS INFORMATION THAT IS PROPRIETARY TO MOLEX INCORPORATED AND SHOULD NOT BE USED WITHOUT WRITTEN PERMISSION				



64	90635-64*	(78.74) 3.100	(82.54) 3.250	(85.88) 3.381
60	90635-60*	(73.66) 2.900	(77.46) 3.050	(80.80) 3.181
50	90635-50*	(60.96) 2.400	(64.76) 2.55	(68.10) 2.681
40	90635-40*	(48.26) 1.900	(52.06) 2.050	(55.40) 2.181
	90635-9402 (CUSTOMER SPECIFIC)			
34	90635-34*	(40.64) 1.600	(44.44) 1.750	(47.78) 1.881
30	90635-30*	(35.56) 1.400	(39.36) 1.550	(42.70) 1.681
26	90635-26*	(30.48) 1.200	(34.28) 1.350	(37.62) 1.481
24	90635-24*	(27.94) 1.100	(31.74) 1.250	(35.08) 1.381
20	90635-20*	(22.86) .900	(26.66) 1.050	(30.00) 1.181
16	90635-16*	(17.78) .700	(21.58) .850	(24.92) .981
14	90635-14*	(15.24) .600	(19.04) .750	(22.38) .881
10	90635-10*	(10.16) .400	(13.96) .550	(17.30) .681
NO. OF CKT.	ENG. NO.	A	B	C



REMOVED OPTION EC NO: E2007-0495 DRAWN BY: BRUNDBYRNES 2006/12/06 CHKD: CHIKD 2006/12/07 APPROVED BY: APPREEDMUNY 2006/12/07	QUALITY SYMBOLS ▽=0 ▽=0	GENERAL TOLERANCES (UNLESS SPECIFIED)		DIMENSION STYLE MM/IN		SCALE 4:1	DESIGN UNITS METRIC	THIRD ANGLE PROJECTION
		4 PLACES ± --- ± ---	3 PLACES ± --- ± ---	2 PLACES ± --- ± ---	1 PLACE ± --- ± ---	ANGULAR ± --- °	DRAWN BY POB DATE 1990/09/25	CHECKED BY JDENNEHY DATE 2005/08/10
DRAFT WHERE APPLICABLE MUST REMAIN WITHIN DIMENSIONS		SEE CHART		MATERIAL NO. SDA-90635		DOCUMENT NO. SDA-90635		SHEET NO. 2 OF 3
THIS DRAWING CONTAINS INFORMATION THAT IS PROPRIETARY TO MOLEX INCORPORATED AND SHOULD NOT BE USED WITHOUT WRITTEN PERMISSION								