

Excellent Integrated System Limited

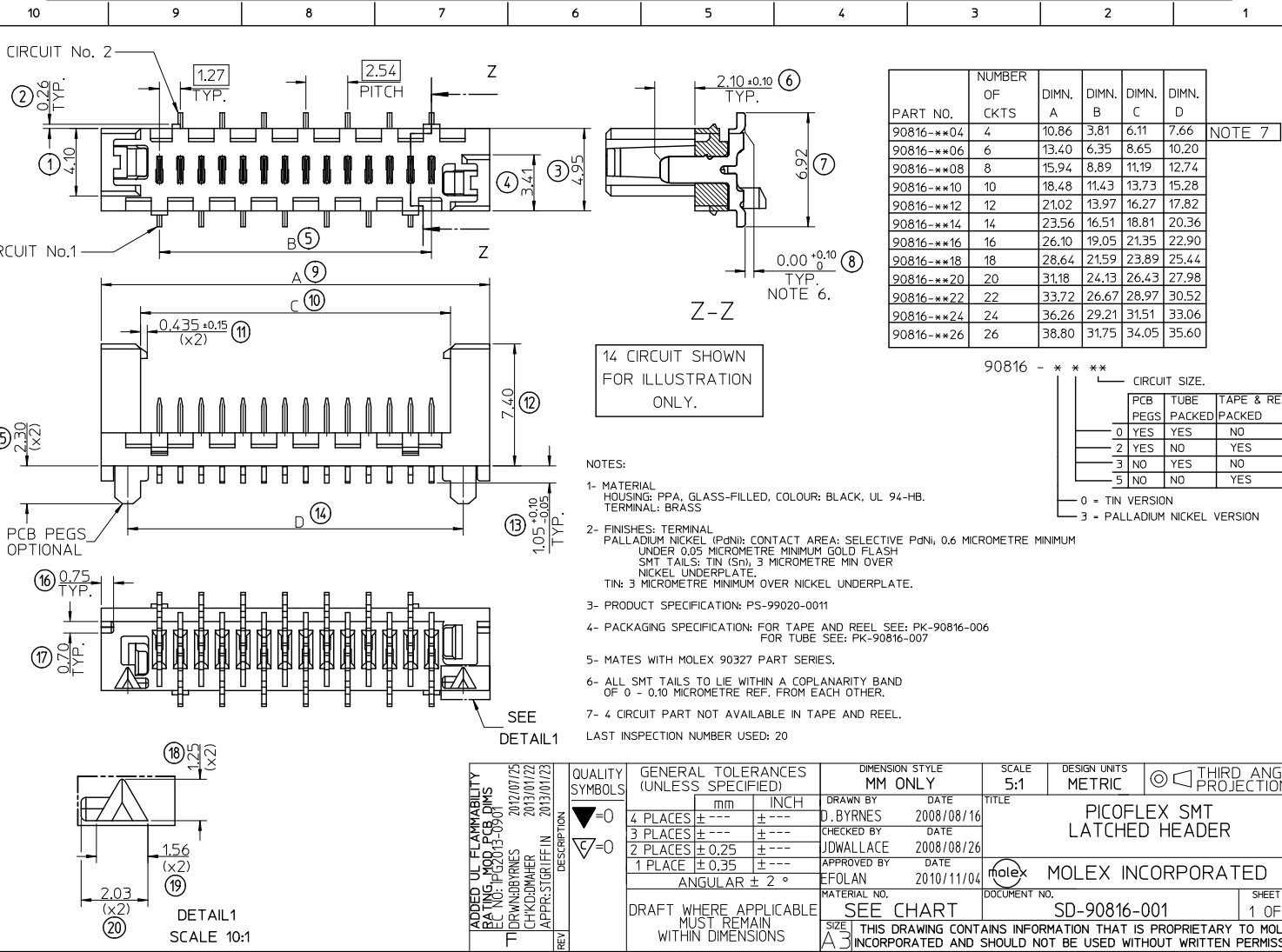
Stocking Distributor

Click to view price, real time Inventory, Delivery & Lifecycle Information:

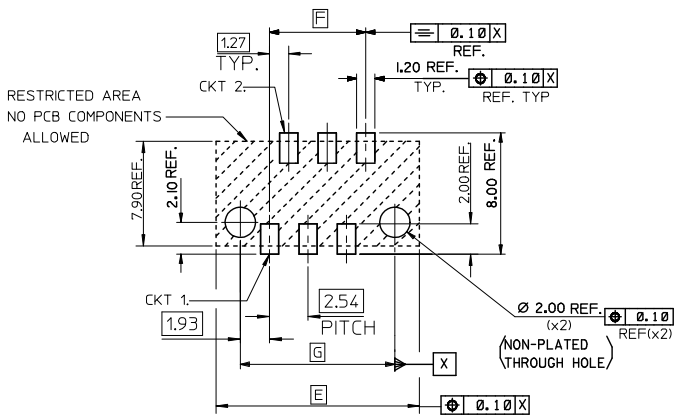
[Molex Connector Corporation](#)
[0908160020](#)

For any questions, you can email us directly:

sales@integrated-circuit.com

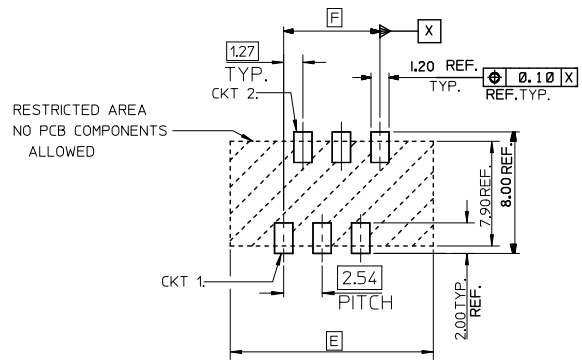


10 9 8 7 6 5 4 3 2 1



RESTRICTED AREA
NO PCB COMPONENTS
ALLOWED

RECOMMENDED PCB THICKNESS 1.60±0.14
PCB LAYOUT FOR CLEARANCE FIT WITH PCB PEGS
HEADER VERSIONS 90816-0**/*2**
VIEWED FROM COMPONENT SIDE
6CKT PART SHOWN FOR REFERENCE



RESTRICTED AREA
NO PCB COMPONENTS
ALLOWED

PCB LAYOUT WITHOUT PCB PEGS
HEADER VERSIONS 90816-0**/*3**/*5**
VIEWED FROM COMPONENT SIDE
6CKT PART SHOWN FOR REFERENCE

90816-0**26	26	38.80	31.75	35.60
90816-0**24	24	36.26	29.21	33.06
90816-0**22	22	33.72	26.67	30.52
90816-0**20	20	31.18	24.13	27.98
90816-0**18	18	28.64	21.59	25.44
90816-0**16	16	26.10	19.05	22.90
90816-0**14	14	23.56	16.51	20.36
90816-0**12	12	21.02	13.97	17.82
90816-0**10	10	18.48	11.43	15.28
90816-0**08	8	15.94	8.89	12.74
90816-0**06	6	13.40	6.35	10.20
90816-0**04	4	10.86	3.81	7.66
PART NO.	NUMBER OF CKTS	DIM. E	DIM. F	DIM. G

SEE SHEET 1 EC. NO: IPG2013-0901 DRAWN BY: D. BYRNES 2013/07/25 CHKD BY: M. MAHER 2013/01/22 APPR: S. GRIFFIN 2013/01/23	QUALITY SYMBOLS ▽=0 ▽=0	GENERAL TOLERANCES (UNLESS SPECIFIED) 4 PLACES ± --- ± --- 3 PLACES ± --- ± --- 2 PLACES ± 0.25 ± --- 1 PLACE ± 0.35 ± --- ANGULAR ± 2 °	DIMENSION STYLE MM ONLY DRAWN BY: D. BYRNES 2008/08/16 CHECKED BY: JDWALLACE 2008/08/26 APPROVED BY: EFOLAN 2010/11/04	SCALE 5:1 DESIGN UNITS METRIC THIRD ANGLE PROJECTION	TITLE PICOFLEX SMT LATCHED HEADER
	DRAFT WHERE APPLICABLE MUST REMAIN WITHIN DIMENSIONS	SEE SHEET 1 THIS DRAWING CONTAINS INFORMATION THAT IS PROPRIETARY TO MOLEX INCORPORATED AND SHOULD NOT BE USED WITHOUT WRITTEN PERMISSION	MATERIAL NO. MOLEX INCORPORATED	DOCUMENT NO. SD-90816-001	SHEET NO. 2 OF 2

9 8 7 6 5 4 3 2 1