

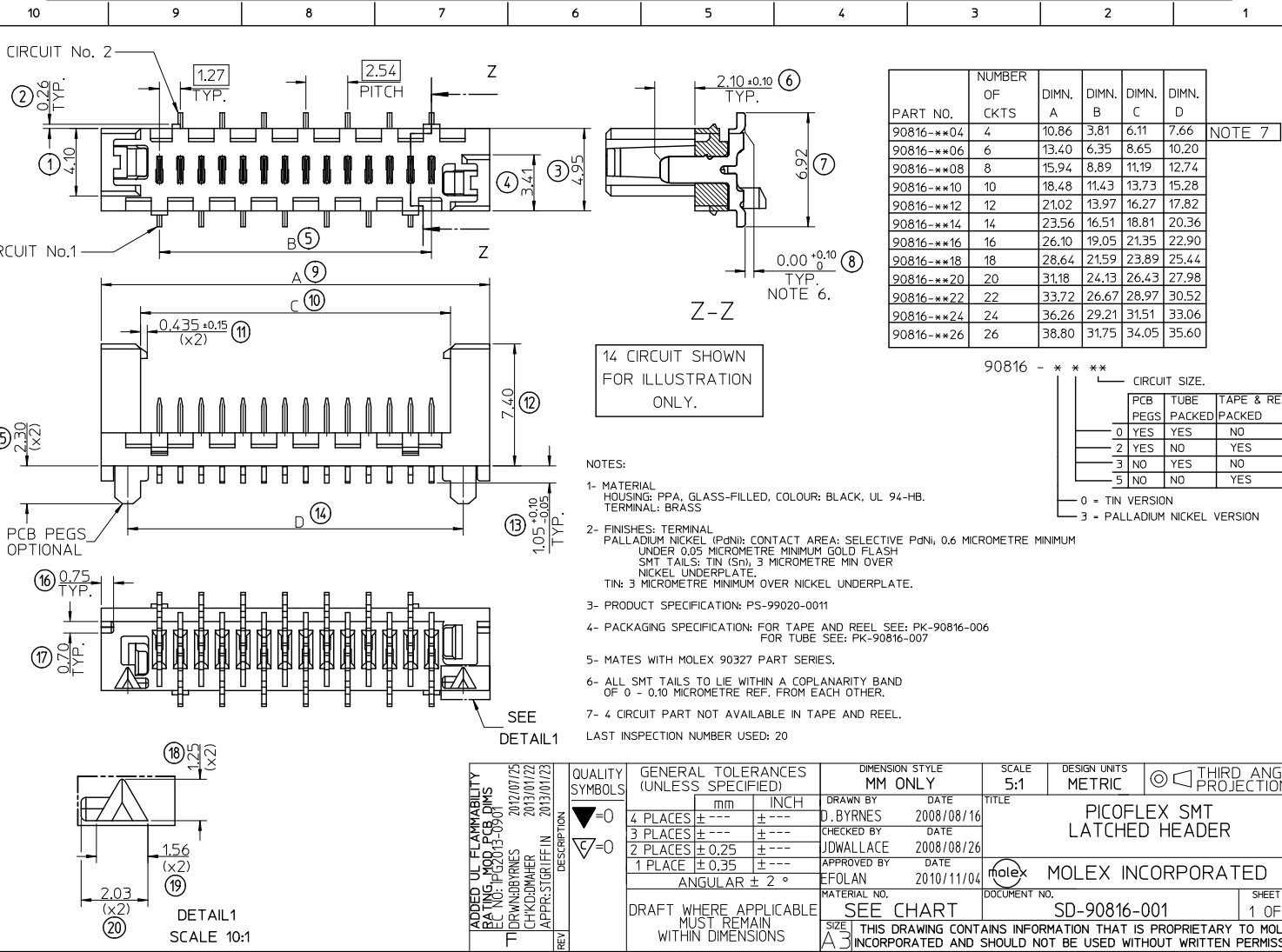
Excellent Integrated System Limited

Stocking Distributor

Click to view price, real time Inventory, Delivery & Lifecycle Information:

[Molex Connector Corporation](#)
[0908160026](#)

For any questions, you can email us directly:
sales@integrated-circuit.com



ADDED UL FLAMMABILITY
REF. MOLEX PEGS
REF. NO. PK-90315-0010

13/08/25
D.BYRNES 2013/01/22
CHKD:BYRNES 2013/01/22
APPR:STIGFFIN 2013/01/23

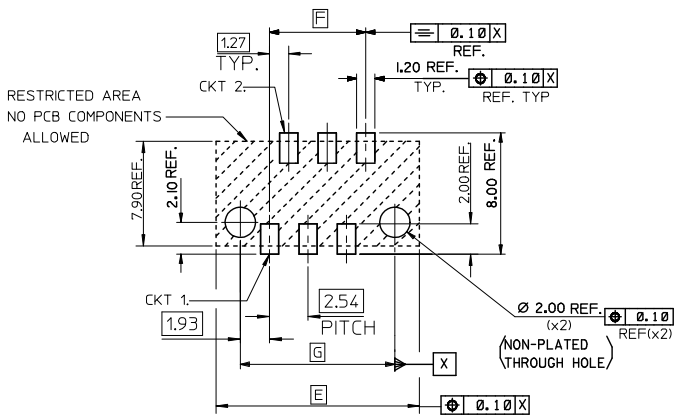
QUALITY SYMBOLS	DESCRIPTION
▽=0	
▽=0	

GENERAL TOLERANCES (UNLESS SPECIFIED)	
	mm
4 PLACES	± 0.25
3 PLACES	± 0.35
2 PLACES	± 0.50
1 PLACE	± 0.75
ANGULAR ± 2°	

DIMENSION STYLE	
MM ONLY	
DRAWN BY	D. BYRNES
DATE	2008/08/16
CHECKED BY	JDWALLACE
DATE	2008/08/26
APPROVED BY	EFOLAN
DATE	2010/11/04

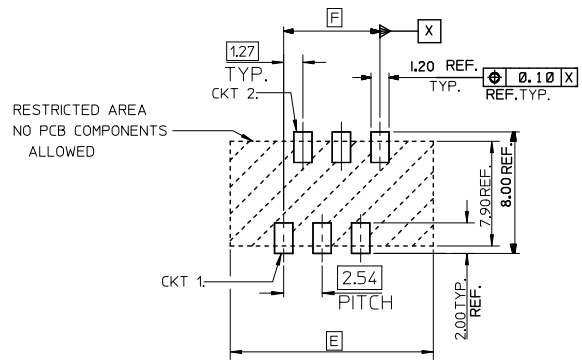
SCALE	DESIGN UNITS	THIRD ANGLE PROJECTION	TITLE
5:1	METRIC	<input checked="" type="checkbox"/> <input type="checkbox"/>	PICOFLEX SMT LATCHED HEADER
			MOLEX INCORPORATED
			SD-90816-001
			SHEET NO. 1 OF 2

10 9 8 7 6 5 4 3 2 1



RESTRICTED AREA
NO PCB COMPONENTS
ALLOWED

RECOMMENDED PCB THICKNESS 1.60±0.14
PCB LAYOUT FOR CLEARANCE FIT WITH PCB PEGS
HEADER VERSIONS 90816-0**/*2**
VIEWED FROM COMPONENT SIDE
6CKT PART SHOWN FOR REFERENCE



RESTRICTED AREA
NO PCB COMPONENTS
ALLOWED

PCB LAYOUT WITHOUT PCB PEGS
HEADER VERSIONS 90816-0**/*3**/*5**
VIEWED FROM COMPONENT SIDE
6CKT PART SHOWN FOR REFERENCE

90816-0**26	26	38.80	31.75	35.60
90816-0**24	24	36.26	29.21	33.06
90816-0**22	22	33.72	26.67	30.52
90816-0**20	20	31.18	24.13	27.98
90816-0**18	18	28.64	21.59	25.44
90816-0**16	16	26.10	19.05	22.90
90816-0**14	14	23.56	16.51	20.36
90816-0**12	12	21.02	13.97	17.82
90816-0**10	10	18.48	11.43	15.28
90816-0**08	8	15.94	8.89	12.74
90816-0**06	6	13.40	6.35	10.20
90816-0**04	4	10.86	3.81	7.66
PART NO.	NUMBER OF CKTS	DIM. E	DIM. F	DIM. G

SEE SHEET 1 EC. NO: IPG2013-0901 DRAWN BY: D.BYRNES 2013/07/25 CHECKED BY: CHKD.BAHER 2013/01/22 APPR: STGR.FFIN 2013/01/23	QUALITY SYMBOLS ▽=0 ▽=0	GENERAL TOLERANCES (UNLESS SPECIFIED) <table border="1"> <tr> <td></td> <td>mm</td> <td>INCH</td> </tr> <tr> <td>4 PLACES</td> <td>± ---</td> <td>± ---</td> </tr> <tr> <td>3 PLACES</td> <td>± ---</td> <td>± ---</td> </tr> <tr> <td>2 PLACES</td> <td>± 0.25</td> <td>± ---</td> </tr> <tr> <td>1 PLACE</td> <td>± 0.35</td> <td>± ---</td> </tr> <tr> <td colspan="3">ANGULAR ± 2 °</td> </tr> </table>		mm	INCH	4 PLACES	± ---	± ---	3 PLACES	± ---	± ---	2 PLACES	± 0.25	± ---	1 PLACE	± 0.35	± ---	ANGULAR ± 2 °			DIMENSION STYLE MM ONLY	SCALE 5:1	DESIGN UNITS METRIC	THIRD ANGLE PROJECTION
		mm	INCH																					
4 PLACES	± ---	± ---																						
3 PLACES	± ---	± ---																						
2 PLACES	± 0.25	± ---																						
1 PLACE	± 0.35	± ---																						
ANGULAR ± 2 °																								
DRAWN BY: D.BYRNES 2008/08/16 CHECKED BY: JDWALLACE 2008/08/26 APPROVED BY: EFOLAN 2010/11/04	TITLE PICOFLEX SMT LATCHED HEADER		MOLEX INCORPORATED																					
MATERIAL NO. SEE SHEET 1	DRAFT WHERE APPLICABLE MUST REMAIN WITHIN DIMENSIONS		DOCUMENT NO. SD-90816-001	SHEET NO. 2 OF 2																				
THIS DRAWING CONTAINS INFORMATION THAT IS PROPRIETARY TO MOLEX INCORPORATED AND SHOULD NOT BE USED WITHOUT WRITTEN PERMISSION																								

9 8 7 6 5 4 3 2 1