



Distributor of Molex Connector Corporation: Excellent Integrated System Limited

Datasheet of 0908330002 - CONN RCPT 2POS 5.00MM IDC

Contact us: [sales@integrated-circuit.com](mailto:sales@integrated-circuit.com) Website: [www.integrated-circuit.com](http://www.integrated-circuit.com)

---

## Excellent Integrated System Limited

Stocking Distributor

Click to view price, real time Inventory, Delivery & Lifecycle Information:

[Molex Connector Corporation](#)

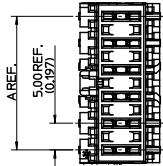
[0908330002](#)

For any questions, you can email us directly:

[sales@integrated-circuit.com](mailto:sales@integrated-circuit.com)

13 12 11 10 9 8 7 6 5 4 3 2 1

EM-90833-600



PARTIAL 1

**NOTES:**

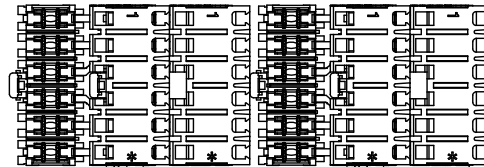
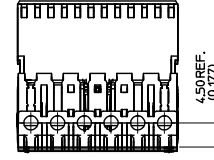
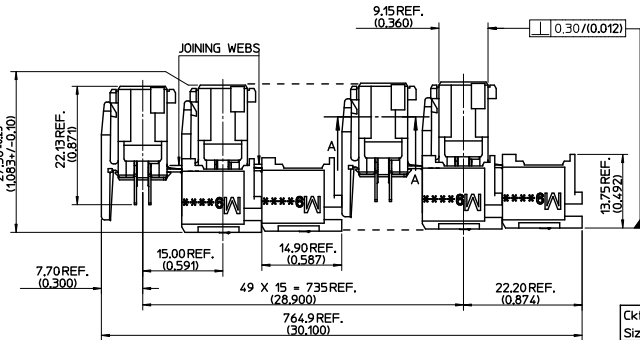
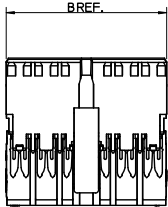
**1. MATERIALS**

HOUSING: UNFILLED NYLON 6/6, RATED UL 94V-2  
FOR COLOURS, SEE CHARTS ON SHEETS 2-6.  
TERMINALS: PHOSPHOR BRONZE, 0.40(0.016) THICK REF.  
PLATING: 5um(200uin) MIN PURE Sn

**2. PRODUCT CONFORMS TO SPECIFICATION PS-99020-0037**

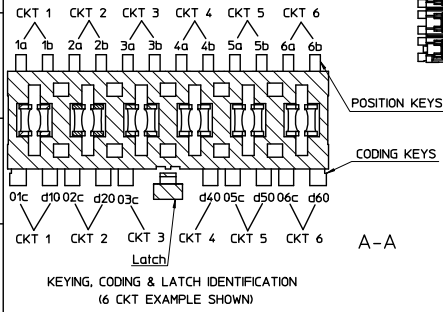
**3. ACCEPTS CABLE, PER ES-99036-0008 OR ES-99036-0009 AS PER THE APPLICATION SPECIFICATION AS-99033-0004**

**4. SEE SUBSEQUENT SHEETS FOR PART NUMBERS SHOWING THE VARIOUS CODING, KEYING AND LATCHING OPTIONS**



Ckt Size	A	B
2	5.00(0.197)	9.90(0.400)
3	10.00(0.394)	14.90(0.587)
4	15.00(0.591)	19.90(0.783)
5	20.00(0.787)	24.90(0.980)
6	25.00(0.984)	29.90(1.177)
7	30.00(1.181)	34.90(1.374)
8	35.00(1.378)	39.90(1.571)
9	40.00(1.575)	44.90(1.768)
10	45.00(1.772)	49.90(1.965)
11	50.00(1.969)	54.90(2.161)
12	55.00(2.165)	59.90(2.358)

CKT	NO. OF CONNECTORS PER TRAY 99025-0021	NO. OF CONNECTORS PER BOX
2	1200	3600
3	750	2250
4	600	1800
5	450	1350
6	300	900
7	300	900
8	300	900
9	150	450
10	150	450
11	150	450
12	150	450



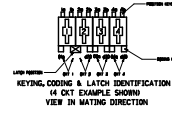
ADDED PART NO. EIC NO: IPC2014-0066 DRWNG: (BRIEN01) 2013/07/09 CHKD: APPR: (S)GRIFIN 2013/08/26 REV:	QUALITY SYMBOLS ▽=0 ▽=0	GENERAL TOLERANCES (UNLESS SPECIFIED) mm INCH 4 PLACES ±--- ±--- 3 PLACES ±0.025 ±--- 2 PLACES ±0.05 ±--- 1 PLACE ±0.1 ±--- ANGULAR ±1/2°	DIMENSION STYLE MM ONLY DRAWN BY DATE PC 94/02/14 CHECKED BY DATE BMAGUIRE 94/02/14 APPROVED BY DATE MWILHITE 94/02/14	SCALE 2:1 DESIGN UNITS METRIC THIRD ANGLE PROJECTION	TITLE 5MM APPLI-MATE 6A/10A F-INDIRECT CONN ASSY
	MATERIAL NO. SEE CHARTS	DOCUMENT NO. SD-90833-001	SHEET NO. 1 OF 8		
	DRAFT WHERE APPLICABLE MUST REMAIN WITHIN DIMENSIONS				
	SIZE THIS DRAWING CONTAINS INFORMATION THAT IS PROPRIETARY TO MOLEX INCORPORATED AND SHOULD NOT BE USED WITHOUT WRITTEN PERMISSION				

ib\_frame\_A2\_P\_AM.T  
Rev. E 2006/04/15

13 12 11 10 9 8 7 6 5 4 3 2 1

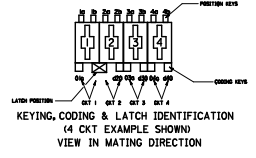


MOLEX PART NO	HOUSING NO.	CIRCUIT SIZE	COLOUR	POSITION KEYS	CODING KEYS	LATCH POSITION	CONFIGURATION	REF
90833-0011	90833-9002	2	BLUE					K12
90833-0057	90833-9001	2	NATURAL					
90833-0061	90833-9004	2	YELLOW	1a	ALL	1/2		
90833-0012	90833-9004		NATURAL					
90833-0058	90833-9001	2	YELLOW	1b 2a	01a	1/2		K14
90833-0013	90833-9001		NATURAL					
90833-0014	90833-9004	2	YELLOW					K33
90833-0048	90833-9005		GREEN					
90833-0015	90833-9003	2	GREY					K34
90833-0059	90833-9006		WHITE					
90833-0074	90833-9001		NATURAL					
90833-0016	90833-9003	2	GREY					K35
90833-0069	90833-9001	2	NATURAL	1b 2b	d20	1/2		
90833-0017	90833-9003	2	GREY					K39
90833-0072	90833-9001		NATURAL	2a 2b	d20	1/2		
90833-0020	90833-9001	2	NATURAL	1a 1b	01a	1/2		K04
90833-0021	90833-9001	2	NATURAL	1b	ALL	1/2		K16
90833-0063	90833-9002	2	BLUE	1b		1/2		
90833-0022	90833-9001	2	NATURAL	1a 2a	NONE	1/2		K06
90833-0032	90833-9001	2	NATURAL	2b	d20	1/2		K38
90833-0047	90833-9001	2	NATURAL	1a 2a	ALL	1/2		K44
90833-0056	90833-9001	2	NATURAL	1b 2a 2b	d20	1/2		K07
90833-0064	90833-9006		WHITE					
90833-0073	90833-9001	2	NATURAL	1b 2a	d20	1/2		K46
90833-0075	90833-9001	2	GREY	1a 1b	d20	1/2		K13



SEE SHEET 1 DEC. NO. 1F2014-0046 DRAWN BY: RRE/EN1 CHECKED: [blank] APPROVED BY: [blank] DATE: 2013/07/09 DESIGNED BY: [blank]	QUALITY SYMBOLS	GENERAL TOLERANCES (UNLESS SPECIFIED)	DIMENSION STYLE	SCALE	DESIGN UNITS	THIRD ANGLE PROJECTION
	$\nabla=0$	mm INCH	MM ONLY	1:1	METRIC	
		4 PLACES ±0.05	DRAWN BY: PC	DATE: 94/02/14	TITLE: 5MM APPLI-MATE 6A/10A F-INDIRECT CONN ASSY	
		3 PLACES ±0.025	CHECKED BY: BMAGUIRE	DATE: 94/02/14		
	2 PLACES ±0.05	1 PLACE ±0.1	APPROVED BY: [blank]	DATE: 94/02/14		
	ANGULAR ±1/2°		MATERIAL NO. MWLH1TE		MOLEX INCORPORATED	
	DRAFT WHERE APPLICABLE MUST REMAIN WITHIN DIMENSIONS	SEE CHARTS			DOCUMENT NO. SD-90833-001	SHEET NO. 3 OF 8
			THIS DRAWING CONTAINS INFORMATION THAT IS PROPRIETARY TO MOLEX INCORPORATED AND SHOULD NOT BE USED WITHOUT WRITTEN PERMISSION			

13	12	11	10	9	8	7	6	5	4	3	2	1					
MOLEX PART NO	HOUSING NO.	CIRCUIT SIZE	COLOR	POSITION KEYS	CODING KEYS	LATCH POSITION	CONFIGURATION	REF	MOLEX PART NO	HOUSING NO.	CIRCUIT SIZE	COLOR	POSITION KEYS	CODING KEYS	LATCH POSITION	CONFIGURATION	REF
90833-0500	90833-9021	3	NATURAL	ALL	ALL	1/2		K00	90833-0501	90833-9022	3	NATURAL	ALL	ALL	2/3		K90
90833-0501	90833-9022	3	NATURAL	ALL	ALL	2/3		K90	90833-0502	90833-9021	3	NATURAL	1b	01c d20	1/2		K01
90833-0502	90833-9021	3	NATURAL	1b	01c d20	1/2		K01	90833-0503	90833-9023	3	YELLOW	ALL	d20	1/2		K40
90833-0503	90833-9023	3	YELLOW	ALL	d20	1/2		K40	90833-0504	90833-9026	3	GREY	ALL	d10	2/3		K41
90833-0504	90833-9026	3	GREY	ALL	d10	2/3		K41	90833-0505	90833-9026	3	GREY	1a 2a	d10	2/3		K42
90833-0505	90833-9026	3	GREY	1a 2a	d10	2/3		K42	90833-0506	90833-9027	3	BLACK YELLOW	1a 3a	d20	1/2		K43
90833-0506	90833-9027	3	BLACK YELLOW	1a 3a	d20	1/2		K43	90833-0507	90833-9024	3	YELLOW	2a	d10 d30	2/3		K44
90833-0507	90833-9024	3	YELLOW	2a	d10 d30	2/3		K44	90833-0508	90833-9021	3	NATURAL	1a	03c	1/2		K04
90833-0508	90833-9021	3	NATURAL	1a	03c	1/2		K04	90833-0509	90833-9026	3	GREY	1a 1b	d10	2/3		K52
90833-0509	90833-9026	3	GREY	1a 1b	d10	2/3		K52	90833-0510	90833-9023	3	YELLOW	1a 1b	d20	1/2		K53
90833-0510	90833-9023	3	YELLOW	1a 1b	d20	1/2		K53	90833-0511	90833-9021	3	NATURAL	1a 1b	d30	1/2		K05
90833-0511	90833-9021	3	NATURAL	1a 1b	d30	1/2		K05	90833-0512	90833-9021	3	NATURAL	1b 2a 2b	d30	1/2		K33
90833-0512	90833-9021	3	NATURAL	1b 2a 2b	d30	1/2		K33	90833-0513	90833-9022	3	NATURAL	ALL	d10 d30	2/3		K38
90833-0513	90833-9022	3	NATURAL	ALL	d10 d30	2/3		K38	90833-0514	90833-9021	3	NATURAL	1a 3a	01c	1/2		K07
90833-0514	90833-9021	3	NATURAL	1a 3a	01c	1/2		K07	90833-0515	90833-9021	3	NATURAL	1b 3a	01c	1/2		K03
90833-0515	90833-9021	3	NATURAL	1b 3a	01c	1/2		K03	90833-0516	90833-9022	3	NATURAL	2a	02c d30	2/3		K57
90833-0516	90833-9022	3	NATURAL	2a	02c d30	2/3		K57	90833-0517	90833-9021	3	NATURAL	2b	d20	1/2		K08
90833-0517	90833-9021	3	NATURAL	2b	d20	1/2		K08	90833-0518	90833-9021	3	NATURAL	1b	d20 03c	1/2		K09
90833-0518	90833-9021	3	NATURAL	1b	d20 03c	1/2		K09	90833-0519	90833-9022	3	NATURAL	1a 2a	d30	2/3		K01
90833-0519	90833-9022	3	NATURAL	1a 2a	d30	2/3		K01	90833-0520	90833-9022	3	NATURAL	2a	d10 d30	2/3		K44
90833-0520	90833-9022	3	NATURAL	2a	d10 d30	2/3		K44	90833-0521	90833-9028	3	BLUE	1a	03c	1/2		K**
90833-0521	90833-9028	3	BLUE	1a	03c	1/2		K**	90833-0522	90833-9022	3	NATURAL	1a 1b 2a 3a	01c 02c d30	2/3		K12
90833-0522	90833-9022	3	NATURAL	1a 1b 2a 3a	01c 02c d30	2/3		K12	90833-0523	90833-9021	3	NATURAL	2b 3b	d10 02c	2/3		K02
90833-0523	90833-9021	3	NATURAL	2b 3b	d10 02c	2/3		K02	90833-0524	90833-9021	3	NATURAL	1a 3a	01c	1/2		K--
90833-0524	90833-9021	3	NATURAL	1a 3a	01c	1/2		K--	90833-0525	90833-9021	3	NATURAL	1a 3a	03c	1/2		K98
90833-0525	90833-9021	3	NATURAL	1a 3a	03c	1/2		K98									



SEE SHEET 1 IEC NO: IPC2014-0066 DRAWING ORIENT: 2013/07/09 CHKD: AF APPR: STORJEFFIN REV: 2013/08/26	QUALITY SYMBOLS ▽=0 ▽=0	GENERAL TOLERANCES (UNLESS SPECIFIED) mm INCH 4 PLACES ±--- ±--- 3 PLACES ±0.025 ±--- 2 PLACES ±0.05 ±--- 1 PLACE ±0.1 ±--- ANGULAR ±1/2°	DIMENSION STYLE MM ONLY DRAWN BY: PC DATE: 94/02/14 CHECKED BY: BMAGUIRE DATE: 94/02/14 APPROVED BY: MWILHITE DATE: 94/02/14 MATERIAL NO. SEE CHARTS SIZE: THIS DRAWING CONTAINS INFORMATION THAT IS PROPRIETARY TO MOLEX INCORPORATED AND SHOULD NOT BE USED WITHOUT WRITTEN PERMISSION	SCALE: 1:1 DESIGN UNITS: METRIC THIRD ANGLE PROJECTION	TITLE: 5MM APPLI-MATE 6A/10A F-INDIRECT CONN ASSY MOLEX INCORPORATED DOCUMENT NO. SD-90833-001 SHEET NO. 4 OF 8
--	-------------------------------	---	--	--	--



13	12	11	10	9	8	7	6	5	4	3	2	1
----	----	----	----	---	---	---	---	---	---	---	---	---

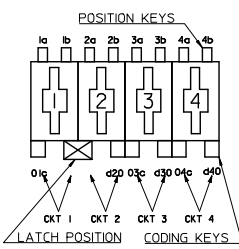
MOLEX PART NO	HOUSING NO.	CIRCUIT SIZE	COLOUR	POSITION KEYS	CODING KEYS	LATCH POSITION	CONFIGURATION	REF.
90833-2024	90833-9202	5	NATURAL	2a	01C, d50	2/3, 4/5		K43

SEE SHEET 1 IEC NO: IFC2014-0066 DRAWN BY: PC CHKD: BMAGUIRE APPR: S TORIFFIN REV: AF	QUALITY SYMBOLS ▽=0 ▽=0	GENERAL TOLERANCES (UNLESS SPECIFIED) <table border="1"> <tr> <th></th> <th>mm</th> <th>INCH</th> </tr> <tr> <td>4 PLACES</td> <td>±---</td> <td>±---</td> </tr> <tr> <td>3 PLACES</td> <td>±0.025</td> <td>±---</td> </tr> <tr> <td>2 PLACES</td> <td>±0.05</td> <td>±---</td> </tr> <tr> <td>1 PLACE</td> <td>±0.1</td> <td>±---</td> </tr> </table>		mm	INCH	4 PLACES	±---	±---	3 PLACES	±0.025	±---	2 PLACES	±0.05	±---	1 PLACE	±0.1	±---	DIMENSION STYLE MM ONLY	SCALE 1:1	DESIGN UNITS METRIC	THIRD ANGLE PROJECTION
		mm	INCH																		
	4 PLACES	±---	±---																		
	3 PLACES	±0.025	±---																		
2 PLACES	±0.05	±---																			
1 PLACE	±0.1	±---																			
DRAFT WHERE APPLICABLE MUST REMAIN WITHIN DIMENSIONS	SEE CHARTS 	DRAWN BY: PC DATE: 94/02/14 CHECKED BY: BMAGUIRE DATE: 94/02/14 APPROVED BY: MWILHITE DATE: 94/02/14	TITLE 5MM APPLI-MATE 6A/10A F-INDIRECT CONN ASSY	MOLEX INCORPORATED	MATERIAL NO. SD-90833-001	SHEET NO. 6 OF 8															
THIS DRAWING CONTAINS INFORMATION THAT IS PROPRIETARY TO MOLEX INCORPORATED AND SHOULD NOT BE USED WITHOUT WRITTEN PERMISSION																					

ib_frame_A2_P_AM_1 Rev. E 2006/04/15	12	11	10	9	8	7	6	5	4	3	2	1
---	----	----	----	---	---	---	---	---	---	---	---	---

13 12 11 10 9 8 7 6 5 4 3 2 1

MOLEX PART NO	HOUSING NO.	CIRCUIT SIZE	COLOUR	POSITION KEYS	CODING KEYS	LATCH POSITION	CONFIGURATION	REF.
90833-2150	90833-9301	6	NATURAL	ALL	ALL	2/3 4/5		K90
90833-2151	90833-9302	6	GREY	ALL	02c d50	2/3 4/5		k38
90833-2152	90833-9302	6	GREY	1b	02c d50	2/3 4/5		k40
90833-2165	90833-9303	6	NATURAL	1b	03c d60	1/2 5/6		k91
90833-2164	90833-9303	6	NATURAL	ALL	ALL	1/2 5/6		k53
90833-2173	90833-9303	6	NATURAL	5b	01c d40	1/2 5/6		k61
90833-2176	90833-9303	6	NATURAL	1b 6c	d30	1/2 5/6		
90833-2177	90833-9303	6	NATURAL	2b 6b	d40	1/2 5/6		k04
90833-2178	90833-9304	6	BLUE	1b	d10 d50	2/3 4/5		k88
90833-2179	90833-9305	6	NATURAL	5b	02C, 06C	3/4		k**
90833-2180	90833-9306	6	NATURAL	1b 2a	d20 03c d60	1/2 4/5		k**
90833-2181	90833-9303	6	NATURAL	NONE	d20, d60	1/2, 5/6		k108



KEYING, CODING & LATCH IDENTIFICATION (4CKT EXAMPLE SHOWN) VIEW IN MATING DIRECTION

MOLEX PART NO	HOUSING NO.	CIRCUIT SIZE	COLOUR	POSITION KEYS	CODING KEYS	LATCH POSITION	CONFIGURATION	REF.
90833-3500	90833-9401	7	YELLOW	2b	d20 d60	1/2 5/6		K32
90833-3501	90833-9401	7	YELLOW	ALL	d20 d60	1/2 5/6		K33
90833-3502	90833-9401	7	YELLOW	ALL	d20 07c	1/2 5/6		K36
90833-3503	90833-9401	7	YELLOW	2b	d20 07c	1/2 5/6		K37
90833-3521	90833-9402	7	NATURAL	2b	d20 07c	1/2 5/6		
90833-3513	90833-9402	7	NATURAL	ALL	ALL	1/2 5/6		K00
90833-3514	90833-9402	7	NATURAL	NONE	d20	1/2 5/6		K44
90833-3518	90833-9403	7	NATURAL	ALL	ALL	2/3 6/7		K90
90833-3520	90833-9403	7	NATURAL	ALL	02c d50	2/3 6/7		K49
90833-3522	90833-9404	7	NATURAL	NONE	d20 03c 07c	5/6		K**
90833-3523	90833-9405	7	NATURAL	1a 6a	03c 07c	4/5		K**
90833-3524	90833-9402	7	NATURAL	1a 1b 2a 3a 4a 5a 6a 7a	d20 07c	1/2 5/6		K**
90833-3521	90833-9402	7	NATURAL	2b	d20 07c	1/2 5/6		K37

MOLEX PART NO	HOUSING NO.	CIRCUIT SIZE	COLOUR	POSITION KEYS	CODING KEYS	LATCH POSITION	CONFIGURATION	REF.
90833-4250	90833-9501	8	NATURAL	ALL	ALL	3/4 5/6		K00
90833-4251	90833-9501	8	NATURAL	1b 3a 3b 5a 5b 7a 8a	01c d20 03c 05c 07c	3/4 5/6		K36
90833-4256	90833-9502	8	NATURAL	ALL	ALL	1/2 7/8		K90
90833-4255	90833-9502	8	NATURAL	ALL	03c d60	1/2 7/8		K39
90833-4261	90833-9503	8	BLUE	ALL	ALL	1/2 7/8		
90833-4254	90833-9502	8	NATURAL	2b 8a	03c d60	1/2 7/8		
90833-4264	90833-9504	8	NATURAL	8b	02c d30 07c	2/3 7/8		

SEE SHEET 1 IEC NO: IFCG2014-0066 DRAWING ORIENT: 2013/07/09 CHKD: AF APPR: STORJEFFIN 2013/08/26	QUALITY SYMBOLS ▽=0 ▽=0	GENERAL TOLERANCES (UNLESS SPECIFIED) mm INCH 4 PLACES ±--- ±--- 3 PLACES ±0.025 ±--- 2 PLACES ±0.05 ±--- 1 PLACE ±0.1 ±--- ANGULAR ±1/2°	DIMENSION STYLE MM ONLY DRAWN BY DATE PC 94/02/14 CHECKED BY DATE BMAGUIRE 94/02/14 APPROVED BY DATE MWILLHITE 94/02/14	SCALE 1:1 DESIGN UNITS METRIC THIRD ANGLE PROJECTION	TITLE 5MM APPLI-MATE 6A/10A F-INDIRECT CONN ASSY	MATERIAL NO. SEE CHARTS DOCUMENT NO. SD-90833-001	SHEET NO. 7 OF 8
	DRAFT WHERE APPLICABLE MUST REMAIN WITHIN DIMENSIONS						
	THIS DRAWING CONTAINS INFORMATION THAT IS PROPRIETARY TO MOLEX INCORPORATED AND SHOULD NOT BE USED WITHOUT WRITTEN PERMISSION						
	MOLEX INCORPORATED						

13 12 11 10 9 8 7 6 5 4 3 2 1

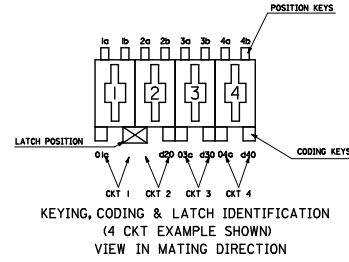


13	12	11	10	9	8	7	6	5	4	3	2	1
----	----	----	----	---	---	---	---	---	---	---	---	---

MOLEX PART NO	HOUSING NO.	CIRCUIT SIZE	COLOUR	POSITION KEYS	CODING KEYS	LATCH POSITION	CONFIGURATION	REF
90833-5000	90833-9601	9	NATURAL	ALL	ALL	3/4 6/7		K00
90833-5001	90833-9601	9	NATURAL	1b 2c 3a 5a 6a 7b 8b	01c 03c d70 08a d90	3/4 6/7		K30
90833-5010	90833-9603	9	NATURAL	2b 5a	d80	2/3 1/8		K03
90833-5012	90833-9602	9	NATURAL	1b	03c	5/6		K0A

MOLEX PART NO	HOUSING NO.	CIRCUIT SIZE	COLOUR	POSITION KEYS	CODING KEYS	LATCH POSITION	CONFIGURATION	REF
90833-8000	90833-9901	12	NATURAL	ALL	ALL	3/4 9/10		K00
90833-8001	90833-9901	12	NATURAL	1a 2a 4a 4b 5a 6b 8a 11a	01c 03c 05a 07c d80 d10 11c	3/4 9/10		K41

MOLEX PART NO	HOUSING NO.	CIRCUIT SIZE	COLOUR	POSITION KEYS	CODING KEYS	LATCH POSITION	CONFIGURATION	REF
90833-6000	90833-9701	10	NATURAL	ALL	ALL	3/4 7/8		K00
90833-6001	90833-9701	10	NATURAL	1a 3b 7b 8a	01c d20 d40 05a d100	3/4 7/8		K34
90833-6005	90833-9702	10	NATURAL	ALL	ALL	4/5 7/8		K98
90833-6006	90833-9703	10	NATURAL	ALL	ALL	4/5 6/7		K99
90833-6007	90833-9702	10	NATURAL	1a 10b	07c	4/5 7/8		K39
90833-6008	90833-9703	10	NATURAL	1b 9a	06c	4/5 6/7		K40
90833-6023	90833-9704	10	NATURAL	1b	03a	5/6		K
90833-6024	90833-9704	10	NATURAL	4b 6b 8a 8b	d100	5/6		K**
90833-6025	90833-9705	10	NATURAL	4b 6b 8a 8b	06c d100	NONE		K**



MOLEX PART NO	HOUSING NO.	CIRCUIT SIZE	COLOUR	POSITION KEYS	CODING KEYS	LATCH POSITION	CONFIGURATION	REF
90833-7000	90833-9801	11	NATURAL	ALL	ALL	3/4 8/9		K00
90833-7001	90833-9801	11	NATURAL	1a 2b 3b 4a 4b 5a 7a 8a 9a 10a 11a	01b d50 05a 08a 10c	3/4 8/9		K33

SEE SHEET 1 IEC NO: IPCG2014-0066 DRAWN: (BRIEN) 2013/07/09 CHKD: AF APPR: STURIEIN 2013/08/26 REV:	QUALITY SYMBOLS ▽=0 ▽=0	GENERAL TOLERANCES (UNLESS SPECIFIED) mm INCH 4 PLACES ±--- ±--- 3 PLACES ±0.025 ±--- 2 PLACES ±0.05 ±--- 1 PLACE ±0.1 ±--- ANGULAR ±1/2°	DIMENSION STYLE MM ONLY DRAWN BY DATE PC 94/02/14 CHECKED BY DATE BMAGUIRE 94/02/14 APPROVED BY DATE MWILHITE 94/02/14 MATERIAL NO. SEE CHARTS SIZE A	SCALE 1:1 DESIGN UNITS METRIC THIRD ANGLE PROJECTION	TITLE 5MM APPLI-MATE 6A/10A F-INDIRECT CONN ASSY	MOLEX INCORPORATED DOCUMENT NO. SD-90833-001	SHEET NO. 8 OF 8
	DRAFT WHERE APPLICABLE MUST REMAIN WITHIN DIMENSIONS						
	THIS DRAWING CONTAINS INFORMATION THAT IS PROPRIETARY TO MOLEX INCORPORATED AND SHOULD NOT BE USED WITHOUT WRITTEN PERMISSION						
	Molex logo						

13	12	11	10	9	8	7	6	5	4	3	2	1
----	----	----	----	---	---	---	---	---	---	---	---	---