

Excellent Integrated System Limited

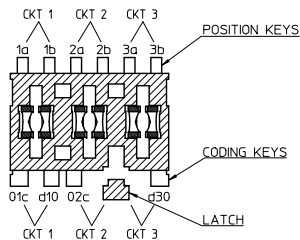
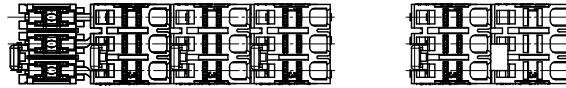
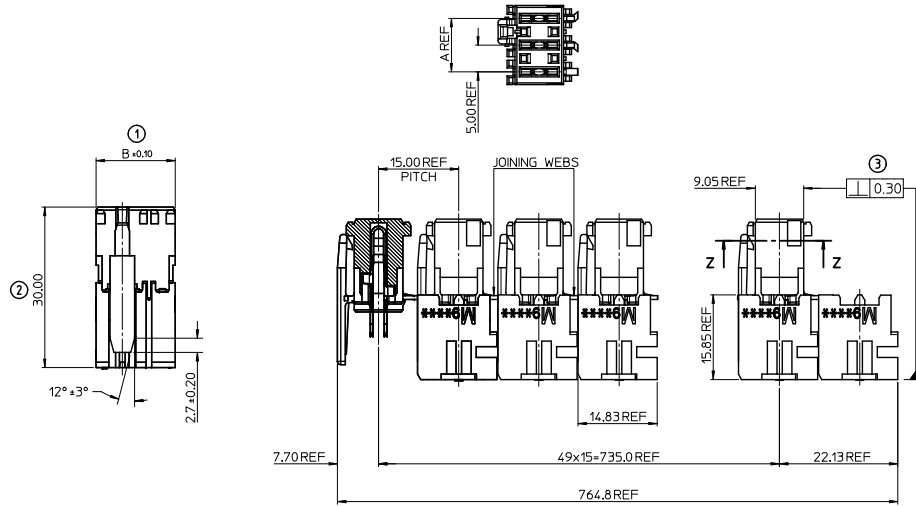
Stocking Distributor

Click to view price, real time Inventory, Delivery & Lifecycle Information:

[Molex Connector Corporation](#)
[0908350057](#)

For any questions, you can email us directly:

sales@integrated-circuit.com



Z-Z
KEYING, CODING & LATCH IDENTIFICATION
(3 CIRCUIT EXAMPLE SHOWN)

NOTES:

1. MATERIALS:
HOUSING: UNFILLED NYLON 6/6, RATED UL94-V2
FOR COLOUR, SEE CHARTS ON SUBSEQUENT SHEETS
TERMINAL: PHOSPHOR BRONZE, 0.50 THICK REF
PLATING: 24µm MINIMUM SILVER IN CONTACT AREA
0.10µm MINIMUM SILVER FLASH ALLOWER
2. PRODUCT SPECIFICATION: PS-99020-0037
3. APPLICATION SPECIFICATION: AS-99033-0004
4. SEE SUBSEQUENT SHEETS FOR PART NUMBERS SHOWING THE VARIOUS CODING, KEYING AND LATCHING OPTIONS

LAST INSPECTION NUMBER USED: 3

CKT SIZE	DIM A	DIM B
2	5.00	9.80
3	10.00	14.80
4	15.00	19.80

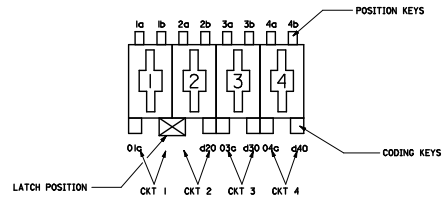
CKT SIZE	NO OF CONNECTORS	NO OF CONNECTORS
	PER TRAY: 99025-0021	PER BOX
2	1200	3600
3	750	2250
4	600	1800

ORIGINAL RELEASE IEC NO: IPC2016-0564 DRAWN: J MURPHY 2015/10/15 CHKD: APPR: MSIAHMAN 2015/11/02	QUALITY SYMBOLS	GENERAL TOLERANCES (UNLESS SPECIFIED)	DIMENSION STYLE	SCALE	DESIGN UNITS	THIRD ANGLE PROJECTION
	$\nabla=0$ $\nabla=0$	mm INCH 4 PLACES ± --- ± --- 3 PLACES ± --- ± --- 2 PLACES ± 0.10 ± --- 1 PLACE ± 0.20 ± --- 0 PLACE ± --- ± ---	MM ONLY	2:1	METRIC	RAST 5 INDIRECT FEMALE 16 AMPS
	DRAFT WHERE APPLICABLE MUST REMAIN WITHIN DIMENSIONS	DRAWN BY: DSHEA 2013/02/01 CHECKED BY: SMC GREEVY 2013/03/12 APPROVED BY: STGRIFFIN 2013/04/08	MATERIAL NO. SEE SHEETS 2&3	DOCUMENT NO. SD-90835-001	SHEET NO. 1 OF 3	
	THIS DRAWING CONTAINS INFORMATION THAT IS PROPRIETARY TO MOLEX INCORPORATED AND SHOULD NOT BE USED WITHOUT WRITTEN PERMISSION					

13 12 11 10 9 8 7 6 5 4 3 2 1

MOLEX PART NO	HOUSING NO.	CIRCUIT SIZE	COLOUR	POSITION KEYS	CODING KEYS	LATCH POSITION	CONFIGURATION	REF
90835-0001 90835-0034	90835-9001 90835-9002	2	NATURAL PURPLE RED	1a 1b 2a 2b	01c d20	1/2		K00
90835-0003	90835-9001	2	NATURAL	1b 2a	01c d20	1/2		K01
90835-0045	90835-9003	2	PINK RED	1a 2b	01c	1/2		K02
90835-0035	90835-9002	2	PURPLE RED	2a	01c d20	1/2		K03
90835-0036 90835-0019	90835-9004 90835-9001	2	VIOLET NATURAL	1a 2b	d20	1/2		K05
90835-0037	90835-9003	2	PINK RED	1b 2b	01c	1/2		K09
90835-0057	90835-9001	2	NATURAL	1a	01c d20	1/2		K12
90835-0038	90835-9002	2	PURPLE RED	2b	01c d20	1/2		K15
90835-0039	90835-9003	2	PINK RED	1a 1b 2a 2b	01c	1/2		K33
90835-0040 90835-0041 90835-0059	90835-9004 90835-9005 90835-9001	2	VIOLET BROWN NATURAL	1a 1b 2a 2b	d20	1/2		K34
90835-0042	90835-9005	2	BROWN	1b 2b	d20	1/2		K35

MOLEX PART NO	HOUSING NO.	CIRCUIT SIZE	COLOUR	POSITION KEYS	CODING KEYS	LATCH POSITION	CONFIGURATION	REF
90835-0043	90835-9006	2	ORANGE	1a 1b	NONE	1/2		K40
90835-0044	90835-9006	2	ORANGE	1a 1b 2a 2b	NONE	1/2		K41
90835-0058	90835-9001	2	NATURAL	1b	d20	1/2		K49



KEYING, CODING & LATCH IDENTIFICATION
(4 CKT EXAMPLE SHOWN)
VIEW IN MATING DIRECTION

SEE SHEET 1 IEC NO: IFC2016-0564 DRAWN: J. MURPHY 2015/10/15 CHKD: APPR: S. HANHAN 2015/11/02 DESCRIPTION:	QUALITY SYMBOLS	GENERAL TOLERANCES (UNLESS SPECIFIED)	DIMENSION STYLE MM ONLY	SCALE 2:1	DESIGN UNITS METRIC	THIRD ANGLE PROJECTION
	$\nabla=0$ $\nabla=0$	4 PLACES ±--- ±--- 3 PLACES ±--- ±--- 2 PLACES ±0.10 ±--- 1 PLACE ±0.20 ±--- 0 PLACE ±--- ±---	DRAWN BY DSHEA DATE 2013/02/01 CHECKED BY SMC GREEVY DATE 2013/03/12 APPROVED BY STGRIFFIN DATE 2013/04/08	TITLE RAST 5 INDIRECT FEMALE 16 AMPS		
	ANGULAR ± 2 ° DRAFT WHERE APPLICABLE MUST REMAIN WITHIN DIMENSIONS	MATERIAL NO. SEE TABLES SIZE A Z	DOCUMENT NO. SD-90835-001			
	SHEET NO. 2 OF 3		THIS DRAWING CONTAINS INFORMATION THAT IS PROPRIETARY TO MOLEX INCORPORATED AND SHOULD NOT BE USED WITHOUT WRITTEN PERMISSION			

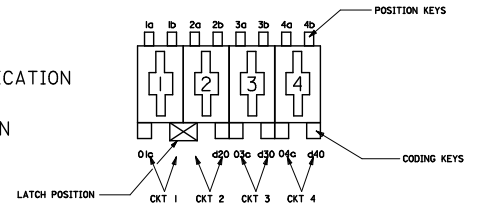
13 12 11 10 9 8 7 6 5 4 3 2 1

13 12 11 10 9 8 7 6 5 4 3 2 1

MOLEX PART NO	HOUSING NO.	CIRCUIT SIZE	COLOUR	POSITION CODING	CODING KEYS	LATCH POSITION	CONFIGURATION	REF
90835-0500	90835-9021	3	NATURAL	1a 1b 2a 2b 3a 3b	01c d20 03c d30	1/2		K00
90835-0501	90835-9022	3	NATURAL	1a 1b 2a 2b 3a 3b	01c d10 02c d30	2/3		K90
90835-0502	90835-9021	3	NATURAL	1b	01a d20	1/2		K01
90835-0518	90835-9023	3	PURPLE RED	1a 1b 2a 2b 3a 3b	d10 d30	2/3		K38
90835-0519	90835-9024	3	VIOLET	1a 1b 2a 2b 3a 3b	NONE	2/3		K39
90835-0520	90835-9025	3	BROWN	1a 1b 2a 2b 3a 3b	d20	1/2		K40
90835-0521	90835-9023	3	PURPLE RED	2a	d10 d30	2/3		K44
90835-0522	90835-9025	3	BROWN	1b 2a	d20	1/2		K45
90835-0523	90835-9024	3	VIOLET	1b 3b	NONE	2/3		K46
90835-0534	90835-9026	3	PINK RED	1a 1b 2a 2b 3a 3b	d10	2/3		K41
90835-0536	90835-9022	3	NATURAL	2a	d10 d30	2/3		K44
90835-0537	90835-9022	3	NATURAL	3b	d10 d30	2/3		K101
90835-0538	90835-9024	3	VIOLET	1b 2a 2b 3b	NONE	2/3		K124

MOLEX PART NO	HOUSING NO.	CIRCUIT SIZE	COLOUR	POSITION CODING	CODING KEYS	LATCH POSITION	CONFIGURATION	REF
90835-1251	90835-9101	4	NATURAL	1a 1b 2a 2b 3a 3b 4a 4b	01c d20 03c d40	1/2 3/4		K00
90835-1254	90835-9101	4	NATURAL	1b	03c d40	1/2 3/4		K01
90835-1268	90835-9102	4	VIOLET	1a 1b 2a 2b 3a 3b 4a 4b	01c	1/2 3/4		K34
90835-1269	90835-9102	4	VIOLET	1a 4b	01c	1/2 3/4		K02
90835-1273	90835-9101	4	NATURAL	1a 3a 3b	01a d20 d40	1/2 3/4		K32
90835-1281	90835-9103	4	PINK RED	1a 1b 2a 2b 3a 3b 4a 4b	01c 03c	1/2 3/4		K76
90835-1283	90835-9103	4	PINK RED	1a 2b 3b 4a	01a 03c d40	1/2 3/4		K65
90835-1284	90835-9103	4	PINK RED	1a 1b 2b 3b 4a	d20 03c d40	1/2 3/4		K--
90835-1285	90835-9103	4	PINK RED	1b	01c 03c	1/2 3/4		K114

KEYING, CODING & LATCH IDENTIFICATION
(4 CKT EXAMPLE SHOWN)
VIEW IN MATING DIRECTION



SEE SHEET 1 IEC NO: IPCG2016-0564 DRAWN: J MURPHY CHKD: APPR: MSIAHMAN 2015/11/02	QUALITY SYMBOLS	GENERAL TOLERANCES (UNLESS SPECIFIED)	DIMENSION STYLE	SCALE	DESIGN UNITS	THIRD ANGLE PROJECTION
	▽=0	m m INCH	MM ONLY	2:1	METRIC	
	▽=0	4 PLACES ±--- ±---	DRAWN BY	DATE	TITLE	
		3 PLACES ±--- ±---	DSHEA	2013/02/01	RAST 5 INDIRECT FEMALE	
	2 PLACES ±0.10 ±---	1 PLACE ±0.20 ±---	CHECKED BY	DATE		
	0 PLACE ±--- ±---	ANGULAR ± 2 °	SMCGREEVY	2013/03/12		
		DRAFT WHERE APPLICABLE MUST REMAIN WITHIN DIMENSIONS	APPROVED BY	DATE		
			STGRIFFIN	2013/04/08		
			MATERIAL NO.	DOCUMENT NO.		
			SEE TABLES	SD-90835-001		
			SIZE			
			AZ			
			THIS DRAWING CONTAINS INFORMATION THAT IS PROPRIETARY TO MOLEX INCORPORATED AND SHOULD NOT BE USED WITHOUT WRITTEN PERMISSION			

13 12 11 10 9 8 7 6 5 4 3 2 1