

## Excellent Integrated System Limited

Stocking Distributor

Click to view price, real time Inventory, Delivery & Lifecycle Information:

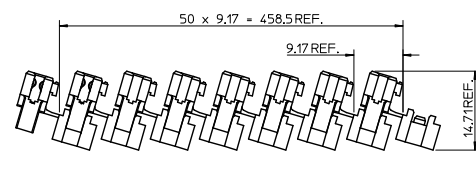
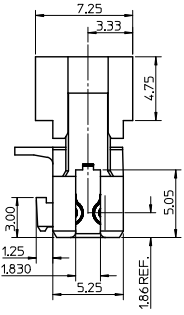
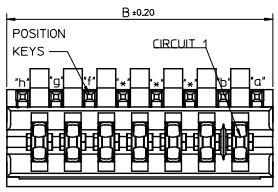
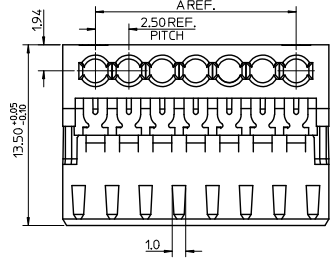
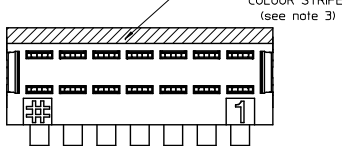
[Molex Connector Corporation](#)  
[0917162012](#)

For any questions, you can email us directly:

[sales@integrated-circuit.com](mailto:sales@integrated-circuit.com)

13 12 11 10 9 8 7 6 5 4 3 2 1

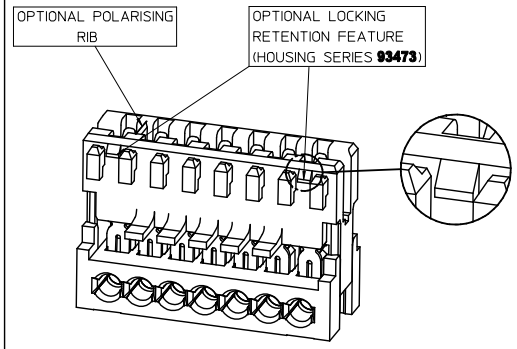
EM-91716-010 SURFACE FOR COLOUR STRIPE (see note 3)



SHIPPING ARRANGEMENT

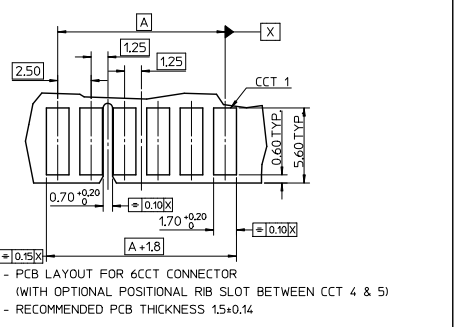
CCT	'A'	'B'
3	5.0	9.875
4	7.5	12.375
5	10.0	14.875
6	12.5	17.375
7	15.0	19.875
8	17.5	22.375
9	20.0	24.875
10	22.5	27.375
11	25.0	29.875
12	27.5	32.375
13	30.0	34.875
14	32.5	37.375
15	35.0	39.875
16	37.5	42.375
17	40.0	44.875
18	42.5	47.375
19	45.0	49.875
20	47.5	52.375

OPTIONAL PART FEATURES



SEE SUBSEQUENT SHEETS FOR RELEVANT PART NUMBERS.  
\*LOCKING RETENTION FEATURE AVAILABLE **FIRST** AND **LAST** CIRCUIT ONLY  
SMALLEST CIRCUIT SIZE AVAILABLE WITH LOCKING RETENTION FEATURE IS 5 CKT

- NOTES:
- REFER TO PRODUCT SPECIFICATION: PS-99020-0040.
  - MATERIAL: HOUSING - NYLON PA6  
UL94-V0, COLOUR: NATURAL (WHITE).  
TERMINAL: PHOSPHOR BRONZE 0.30 REF. THICK - PLATING HOT TIN DIP.
  - COLOUR STRIPE IS OPTIONAL, AVAILABLE IN THE FOLLOWING COLOURS: RED, GREEN, BLUE, PURPLE  
(**BOLD** SIGNIFIES CUSTOMER SPECIFIC CONFIGURATION).
  - REFER TO PACKAGING SPEC (PK-90871-001)
  - REFER TO APPLICATION SPEC (AS-99033-0008)



DOC. MAINTENANCE E.C. NO: PG2016-0963 DRAWN: J. MURPHY 2016/01/05 CHKD: BG APPR: S. HANHAN 2016/01/20 REV:	QUALITY SYMBOLS ▽=0 ▽=0	GENERAL TOLERANCES (UNLESS SPECIFIED) <table border="1"> <thead> <tr> <th></th> <th>mm</th> <th>INCH</th> </tr> </thead> <tbody> <tr> <td>4 PLACES</td> <td>±---</td> <td>±---</td> </tr> <tr> <td>3 PLACES</td> <td>±0.05</td> <td>±---</td> </tr> <tr> <td>2 PLACES</td> <td>±0.10</td> <td>±---</td> </tr> <tr> <td>1 PLACE</td> <td>±0.2</td> <td>±---</td> </tr> <tr> <td>0 PLACE</td> <td>±---</td> <td>±---</td> </tr> </tbody> </table>		mm	INCH	4 PLACES	±---	±---	3 PLACES	±0.05	±---	2 PLACES	±0.10	±---	1 PLACE	±0.2	±---	0 PLACE	±---	±---	DIMENSION STYLE MM ONLY	SCALE 5:1	DESIGN UNITS METRIC	THIRD ANGLE PROJECTION
		mm	INCH																					
4 PLACES	±---	±---																						
3 PLACES	±0.05	±---																						
2 PLACES	±0.10	±---																						
1 PLACE	±0.2	±---																						
0 PLACE	±---	±---																						
DRAWN BY: MCMAMAR 2004/02/12 CHECKED BY: JDENNEHY 2004/02/13 APPROVED BY: BMAGUIRE 2004/02/16 MATERIAL NO.: SEE SHEETS 2-10 DRAFT WHERE APPLICABLE MUST REMAIN WITHIN DIMENSIONS	DATE: 2016/01/20 TITLE: APPLI-MATE 2.5 FEMALE (MATL: NYLON PA6) DOCUMENT NO.: SD-91716-001 SHEET NO.: 1 OF 10																							

13 12 11 10 9 8 7 6 5 4 3 2 1

3 CIRCUIT									
MOLEX PART NO.	MOLEX HOUSING NO.	TERMINAL VOID POSITION	REMOVED POSITION KEYS	CONFIGURATION (SEE NOTES)	END WALLS		POLARIZING RIB	COLOUR STRIPE	
					FIRST	LAST			
91716-0001	91715-0003	NONE	NONE		OPEN	OPEN	NONE	NONE	
91716-0002	91715-0003	NONE	a d		OPEN	OPEN	NONE	RED	
91716-0013	91715-0003	NONE	a		OPEN	OPEN	NONE	NONE	
91716-0014	91715-0003	NONE	b		OPEN	OPEN	NONE	NONE	
91716-0015	91715-0003	NONE	c		OPEN	OPEN	NONE	NONE	
91716-0016	91715-0003	NONE	d		OPEN	OPEN	NONE	NONE	
91716-0017	91715-0003	NONE	b d		OPEN	OPEN	NONE	NONE	
91716-0018	91715-0003	NONE	a c		OPEN	OPEN	NONE	NONE	
91716-0019	91715-0003	NONE	a d		OPEN	OPEN	NONE	NONE	
91716-0020	91715-0003	NONE	a b		OPEN	OPEN	NONE	NONE	
91716-0021	91715-0003	NONE	b c		OPEN	OPEN	NONE	NONE	
91716-0022	91715-0003	NONE	c d		OPEN	OPEN	NONE	NONE	
91716-0023	91715-0003	CKT 2	b d		OPEN	OPEN	NONE	NONE	
91716-0024	91715-0003	CKT 3	c		OPEN	OPEN	NONE	BLUE	
91716-0034	91715-0103	NONE	NONE		OPEN	OPEN	BETWEEN CKT 1&2	NONE	
91716-0041	91715-0203	NONE	NONE		OPEN	OPEN	BETWEEN CKT 2&3	NONE	
91716-0042	91715-0003	CKT 1	NONE		OPEN	OPEN	NONE	NONE	
91716-0043	91715-0003	CKT 1	c		OPEN	OPEN	NONE	NONE	
91716-0044	91715-0003	NONE	b d		OPEN	OPEN	NONE	BLUE	
91716-0045	91715-0003	NONE	b		OPEN	OPEN	NONE	BLUE	
91716-0046	91715-0003	CKT 1	d		OPEN	OPEN	NONE	NONE	
91716-0047	91715-0003	NONE	b d		OPEN	OPEN	NONE	RED	
91716-0048	91715-0003	NONE	b c d		OPEN	OPEN	NONE	NONE	
91716-0049	91715-0003	NONE	c		OPEN	OPEN	NONE	PURPLE	
91716-0050	91715-9903	NONE	NONE		OPEN	NARROW	NONE	NONE	

3 CIRCUIT (cont'd)									
MOLEX PART NO.	MOLEX HOUSING NO.	TERMINAL VOID POSITION	REMOVED POSITION KEYS	CONFIGURATION (SEE NOTES)	END WALLS		POLARIZING RIB	COLOUR STRIPE	
					FIRST	LAST			
91716-0051	91715-0003	NONE	d		OPEN	OPEN	NONE	BLACK	

NOTES  
 1. + DENOTES TERMINAL VOIDED POSITION  
 @ DENOTES TERMINAL LOADED POSITION  
 | DENOTES POLARIZING RIB POSITION  
 2. HOUSING NUMBER FOR MOLEX REFERENCE ONLY

SEE SHEET 1 FOR MOLDING DRAWING MURPHY 20/06/01/05 CHECKED: APPROVED: DATE: 20/06/01/05	QUALITY SYMBOLS	GENERAL TOLERANCES (UNLESS SPECIFIED)	DIMENSION STYLE	SCALE	DESIGN UNITS	THIRD ANGLE PROJECTION
		mm INCH 4 PLACES ±--- ±--- 3 PLACES ±0.05 ±--- 2 PLACES ±0.10 ±--- 1 PLACE ±0.2 ±--- 0 PLACE ±--- ±---	MM ONLY	1:1	METRIC	
	DRAWN BY: MCKNAMAR DATE: 2004/02/12 CHECKED BY: JDENNEHY DATE: 2004/02/13 APPROVED BY: BMAGUIRE DATE: 2004/02/16	TITLE: APPLI-MATE 2.5 FEMALE (MATL: NYLON PA6)				
	MATERIAL NO. SD-91716-001		DOCUMENT NO. SD-91716-001			

INCORPORATED AND SHOULD NOT BE USED WITHOUT WRITTEN PERMISSION

20 19 18 17 16 15 14 13 12 11 10 9 8 7 6 5 4 3 2 1

4 CIRCUIT								
MOLEX PART NO.	MOLEX HOUSING NO.	TERMINAL VOID POSITION	REMOVED POSITION KEYS	CONFIGURATION (SEE NOTES)	END WALLS		POLARIZING RIB	COLOUR STRIPE
					FIRST	LAST		
91716-0501	91715-0004	NONE	NONE		OPEN	OPEN	NONE	NONE
91716-0502	91715-0004	NONE	d		OPEN	OPEN	NONE	NONE
91716-0503	91715-0004	NONE	a d		OPEN	OPEN	NONE	NONE
91716-0504	91715-0004	NONE	c e		OPEN	OPEN	NONE	NONE
91716-0505	91715-0004	NONE	a		OPEN	OPEN	NONE	NONE
91716-0506	91715-0204	NONE	NONE		OPEN	OPEN	<b>BETWEEN CKT 283</b>	NONE
91716-0538	91715-0004	NONE	b		OPEN	OPEN	NONE	NONE
91716-0530	91715-0004	NONE	b c		OPEN	OPEN	NONE	NONE
91716-0539	91715-0004	NONE	a b		OPEN	OPEN	NONE	NONE
91716-0540	91715-0004	NONE	d e		OPEN	OPEN	NONE	NONE
91716-0541	91715-0004	NONE	ALL		OPEN	OPEN	NONE	NONE
91716-0542	91715-0004	NONE	a b e		OPEN	OPEN	NONE	NONE
91716-0507	91715-0004	<b>CKT 1</b>	NONE		OPEN	OPEN	NONE	NONE
91716-0543	91715-0304	NONE	NONE		OPEN	OPEN	<b>BETWEEN CKT 344</b>	<b>RED</b>
91716-0544	91715-0204	NONE	NONE		OPEN	OPEN	<b>BETWEEN CKT 283</b>	<b>BLUE</b>
91716-0545	91715-0004	NONE	d		OPEN	OPEN	NONE	<b>BLUE</b>
91716-0546	91715-0004	NONE	b		OPEN	OPEN	NONE	<b>RED</b>
91716-0547	91715-0004	NONE	b c		OPEN	OPEN	NONE	<b>GREEN</b>
91716-0548	91715-0004	NONE	c d		OPEN	OPEN	NONE	<b>RED</b>
91716-0549	91715-0004	NONE	a c e		OPEN	OPEN	NONE	NONE

4 CIRCUIT (cont'd)								
MOLEX PART NO.	MOLEX HOUSING NO.	TERMINAL VOID POSITION	REMOVED POSITION KEYS	CONFIGURATION (SEE NOTES)	END WALLS		POLARIZING RIB	COLOUR STRIPE
					FIRST	LAST		
91716-0550	91715-0104	NONE	NONE		OPEN	OPEN	<b>BETWEEN CKT 182</b>	NONE
91716-0551	91715-0004	NONE	NONE		OPEN	OPEN	NONE	<b>GREEN</b>
91716-0552	91715-0004	NONE	b c d		OPEN	OPEN	NONE	NONE
91716-0553	91715-0004	NONE	b d		OPEN	OPEN	NONE	NONE
91716-0554	91715-0004	NONE	a b d		OPEN	OPEN	NONE	NONE
91716-0555	91715-0004	NONE	a c e		OPEN	OPEN	NONE	<b>BLACK</b>
91716-0556	91715-0004	NONE	a e		OPEN	OPEN	NONE	NONE
91716-0557	91715-0104	NONE	a b d e		OPEN	OPEN	<b>BETWEEN CKT 182</b>	NONE
91716-0558	91715-0004	NONE	a c		OPEN	OPEN	NONE	NONE
91716-0559	91715-0004	NONE	b e		OPEN	OPEN	NONE	NONE

- NOTES
- + DENOTES TERMINAL VOIDED POSITION  
 ● DENOTES TERMINAL LOADED POSITION  
 | DENOTES POLARIZING RIB POSITION
  - HOUSING NUMBER FOR MOLEX REFERENCE ONLY

SEE SHEET 1 SEC. NO. 162016-0063 DRAWN BY: MURPHY CHECKED: CHANDRAN APPROVED BY: CHANDRAN DATE: 20/01/05 20/01/05	QUALITY SYMBOLS	GENERAL TOLERANCES (UNLESS SPECIFIED)	DIMENSION STYLE	SCALE	DESIGN UNITS	THIRD ANGLE PROJECTION	
		mm INCH	MM ONLY	5:1	METRIC		
		4 PLACES ±0.05	DRAWN BY: WKNAMAR DATE: 2004/02/12	TITLE: APPLI-MATE 2.5 FEMALE (MATL: NYLON PA6)			
		3 PLACES ±0.10	CHECKED BY: J DENNEHY DATE: 2004/02/13	APPROVED BY: BMAGUIRE DATE: 2004/02/16			
	2 PLACES ±0.20	APPROVED BY: BMAGUIRE DATE: 2004/02/16	PATENT NO. DOCUMENT NO. SD-91716-001				
	1 PLACE ±	ANGULAR ±1/2°	SEE CHARTS				
	0 PLACE ±	DRAFT WHERE APPLICABLE MUST REMAIN WITHIN DIMENSIONS	524 THIS DRAWING CONTAINS INFORMATION THAT IS PROPRIETARY TO MOLEX INCORPORATED AND SHOULD NOT BE USED WITHOUT WRITTEN PERMISSION				
			SHEET NO. 3 OF 10				

19 18 17 16 15 14 13 12 11 10 9 8 7 6 5 4 3 2 1

5 CIRCUIT									5 CIRCUIT									
MOLEX PART NO.	MOLEX HOUSING NO.	TERMINAL VOID POSITION	REMOVED POSITION KEYS	CONFIGURATION (SEE NOTES)	END WALLS FIRST	END WALLS LAST	POLARIZING RB	COLOR STRIPE	MOLEX PART NO.	MOLEX HOUSING NO.	TERMINAL VOID POSITION	REMOVED POSITION KEYS	CONFIGURATION (SEE NOTES)	END WALLS FIRST	END WALLS LAST	POLARIZING RB	COLOR STRIPE	
91716-1001	91715-0005	NONE	NONE	⓪⓪⓪⓪⓪⓪ ①②③④⑤	OPEN	OPEN	NONE	NONE	91716-1026	93473-0205	NONE	ALL	⓪⓪⓪⓪⓪⓪ ①②③④⑤	OPEN	OPEN	BETWEEN CKT 2&3	NONE	LOCKING RETENTION FEATURE
91716-1002	91715-0305	NONE	ALL	⓪⓪⓪⓪⓪⓪ ①②③④⑤	OPEN	OPEN	BETWEEN CKT 3&4	NONE	91716-1027	91715-0205	NONE	ALL	⓪⓪⓪⓪⓪⓪ ①②③④⑤	OPEN	OPEN	BETWEEN CKT 2&3	NONE	
91716-1003	91715-0405	NONE	NONE	⓪⓪⓪⓪⓪⓪ ①②③④⑤	OPEN	OPEN	BETWEEN CKT 4&5	NONE	91716-1028	93473-0005	NONE	NONE	⓪⓪⓪⓪⓪⓪ ①②③④⑤	OPEN	OPEN	NONE	NONE	LOCKING RETENTION FEATURE
91716-1004	91715-0005	NONE	c d	⓪⓪⓪⓪⓪⓪ ①②③④⑤	OPEN	OPEN	NONE	NONE										
91716-1005	91715-0005	NONE	a	⓪⓪⓪⓪⓪⓪ ①②③④⑤	OPEN	OPEN	NONE	NONE										
91716-1006	91715-0005	NONE	b	⓪⓪⓪⓪⓪⓪ ①②③④⑤	OPEN	OPEN	NONE	NONE										
91716-1007	91715-0005	NONE	a b e f	⓪⓪⓪⓪⓪⓪ ①②③④⑤	OPEN	OPEN	NONE	NONE										
91716-1008	91715-0205	NONE	NONE	⓪⓪⓪⓪⓪⓪ ①②③④⑤	OPEN	OPEN	BETWEEN CKT 2&3	NONE										
91716-1009	91715-0005	CKT 2, 3, 4	NONE	⓪⓪⓪⓪⓪⓪ ①②③④⑤	OPEN	OPEN	NONE	NONE										
91716-1010	91715-0005	CKT 2	c	⓪⓪⓪⓪⓪⓪ ①②③④⑤	OPEN	OPEN	NONE	NONE										
91716-1011	91715-0005	CKT 2	d	⓪⓪⓪⓪⓪⓪ ①②③④⑤	OPEN	OPEN	NONE	NONE										
91716-1012	91715-0005	CKT 2	b	⓪⓪⓪⓪⓪⓪ ①②③④⑤	OPEN	OPEN	NONE	NONE										
91716-1013	91715-0005	CKT 2	a	⓪⓪⓪⓪⓪⓪ ①②③④⑤	OPEN	OPEN	NONE	NONE										
91716-1014	91715-0005	NONE	b c d e	⓪⓪⓪⓪⓪⓪ ①②③④⑤	OPEN	OPEN	NONE	NONE										
91716-1015	91715-0305	CKT 2,3,4	NONE	⓪⓪⓪⓪⓪⓪ ①②③④⑤	OPEN	OPEN	BETWEEN CKT 3&4	RED										
91716-1016	91715-0005	CKT 2	b	⓪⓪⓪⓪⓪⓪ ①②③④⑤	OPEN	OPEN	NONE	RED										
91716-1017	91715-0005	NONE	d e	⓪⓪⓪⓪⓪⓪ ①②③④⑤	OPEN	OPEN	NONE	NONE										
91716-1018	91715-0005	NONE	a d f	⓪⓪⓪⓪⓪⓪ ①②③④⑤	OPEN	OPEN	NONE	NONE										
91716-1019	91715-0105	NONE	NONE	⓪⓪⓪⓪⓪⓪ ①②③④⑤	OPEN	OPEN	BETWEEN CKT 1&2	NONE										
91716-1020	91715-0005	CKT 2, 3, 4	b	⓪⓪⓪⓪⓪⓪ ①②③④⑤	OPEN	OPEN	NONE	NONE										
91716-1021	91715-0005	NONE	d	⓪⓪⓪⓪⓪⓪ ①②③④⑤	OPEN	OPEN	NONE	NONE										
91716-1022	91715-0005	NONE	b f	⓪⓪⓪⓪⓪⓪ ①②③④⑤	OPEN	OPEN	NONE	RED										
91716-1023	91715-0005	CKT 2, 3, 4	c e	⓪⓪⓪⓪⓪⓪ ①②③④⑤	OPEN	OPEN	NONE	NONE										
91716-1024	91715-0205	NONE	a b e f	⓪⓪⓪⓪⓪⓪ ①②③④⑤	OPEN	OPEN	BETWEEN CKT 2&3	NONE										
91716-1025	91715-0005	CKT 2, 3, 4	c f	⓪⓪⓪⓪⓪⓪ ①②③④⑤	OPEN	OPEN	NONE	NONE										

NOTES  
 1. + DENOTES TERMINAL VOIDED POSITION  
 ● DENOTES TERMINAL LOADED POSITION  
 † DENOTES POLARIZING RB POSITION  
 2. HOUSING NUMBER FOR MOLEX REFERENCE ONLY

SEE SHEET 1 REVISION: 09/20/16 DRAWN: JIM HARRY CHECKED: JIM HARRY APPROVED: JIM HARRY DATE: 2016/01/05 DESIGNED: JIM HARRY DATE: 2016/01/05 BY: JIM HARRY	QUALITY SYMBOLS	GENERAL TOLERANCES (UNLESS SPECIFIED)	DIMENSION STYLE	SCALE	DESIGN UNITS	THIRD ANGLE PROJECTION	
	4 PLACES ±.005 3 PLACES ±.010 2 PLACES ±.020 1 PLACE ±.040 0 PLACE ±.080	mm INCH ±.005 ±.0005 ±.010 ±.0010 ±.020 ±.0020 ±.040 ±.0040 ±.080 ±.0080	DRAWN BY: NHCNAMAR DATE: 2004/02/12 CHECKED BY: J DENEHY DATE: 2004/02/13 APPROVED BY: B MAGUIRE DATE: 2004/02/16	MM ONLY	5:1	METRIC	APPLI-MATE 2.5 FEMALE (MATL: NYLON PA6)
	ANGULAR ±1/2° DRAFT WHERE APPLICABLE MUST REMAIN WITHIN DIMENSIONS	SEE CHARTS SIZE A	MATERIAL NO: DOCUMENT NO: SD-91716-001				SHEET NO: 4 OF 10
	THIS DRAWING CONTAINS INFORMATION THAT IS PROPRIETARY TO MOLEX INCORPORATED AND SHOULD NOT BE USED WITHOUT WRITTEN PERMISSION						

20 19 18 17 16 15 14 13 12 11 10 9 8 7 6 5 4 3 2 1

6 CIRCUIT								
MOLEX PART NO.	MOLEX HOUSING NO.	TERMINAL VOID POSITION	REMOVED POSITION KEYS	CONFIGURATION (SEE NOTES)	END WALLS		POLARIZING RB	COLOUR STRIPE
					FIRST	LAST		
9176-1501	9175-0006	NONE	NONE		OPEN	OPEN	NONE	NONE
9176-1502	9175-0306	NONE	ALL		OPEN	OPEN	BETWEEN CKT 3&4	NONE
9176-1503	9175-0006	NONE	c e f g		OPEN	OPEN	NONE	NONE
9176-1504	9175-0206	NONE	ALL		OPEN	OPEN	BETWEEN CKT 2&3	NONE
9176-1505	9175-0006	CKT 2, 5	d f		OPEN	OPEN	NONE	NONE
9176-1506	9175-0006	NONE	a b f g		OPEN	OPEN	NONE	NONE
9176-1507	9175-0006	NONE	e f		OPEN	OPEN	NONE	NONE
9176-1509	9175-0006	NONE	g		OPEN	OPEN	NONE	NONE
9176-1510	9175-0006	CKT 2	c f		OPEN	OPEN	NONE	NONE
9176-1511	9175-0006	CKT 2, 5	NONE		OPEN	OPEN	NONE	NONE
9176-1512	9175-0006	CKT 3, 5	NONE		OPEN	OPEN	NONE	NONE
9176-1513	9175-0006	CKT 2, 4	b d e f		OPEN	OPEN	NONE	NONE
9176-1514	9175-0106	CKT 3, 5	NONE		OPEN	OPEN	BETWEEN CKT 1&2	NONE
9176-1515	9175-0206	CKT 2, 5	NONE		OPEN	OPEN	BETWEEN CKT 2&3	NONE
9176-1516	9175-0306	NONE	c f		OPEN	OPEN	BETWEEN CKT 3&4	NONE
9176-1517	9175-0006	NONE	c e		OPEN	OPEN	NONE	NONE
9176-1518	9175-0006	CKT 2, 4	NONE		OPEN	OPEN	NONE	NONE
9176-1519	9175-0006	NONE	a c e		OPEN	OPEN	NONE	NONE
9176-1520	9175-0006	CKT 5	c e		OPEN	OPEN	NONE	NONE
9176-1521	9175-0006	CKT 2, 4, 5, 6	c e		OPEN	OPEN	NONE	NONE
9176-1522	9175-0006	CKT 2, 6	c e		OPEN	OPEN	NONE	NONE

6 CIRCUIT (cont'd)								
MOLEX PART NO.	MOLEX HOUSING NO.	TERMINAL VOID POSITION	REMOVED POSITION KEYS	CONFIGURATION (SEE NOTES)	END WALLS		POLARIZING RB	COLOUR STRIPE
					FIRST	LAST		
9176-1523	9175-0406	NONE	NONE		OPEN	OPEN	BETWEEN CKT 4&5	NONE
9176-1524	9175-0006	CKT 2, 4, 5, 6	NONE		OPEN	OPEN	NONE	NONE
9176-1525	9175-0006	CKT 2, 6	NONE		OPEN	OPEN	NONE	NONE
9176-1526	9175-0006	CKT 2, 5	NONE		OPEN	OPEN	NONE	NONE
9176-1527	9175-0006	CKT 2, 5	c e		OPEN	OPEN	NONE	NONE
9176-1528	9175-0006	CKT 2, 5	a b d f g		OPEN	OPEN	NONE	GREEN
9176-1529	9175-0006	NONE	d		OPEN	OPEN	NONE	NONE
9176-1531	9175-0006	CKT 1, 2, 3, 5	NONE		OPEN	OPEN	NONE	NONE
9176-1532	9175-0006	CKT 1, 2, 3, 5	d f		OPEN	OPEN	NONE	NONE
9176-1534	9175-0006	CKT 3, 4	b d f		OPEN	OPEN	NONE	NONE
9176-1535	9175-0006	CKT 4, 5	b d f		OPEN	OPEN	NONE	NONE
9176-1536	9175-0206	NONE	NONE		OPEN	OPEN	BETWEEN CKT 2&3	NONE
9176-1537	9175-0006	NONE	d		OPEN	OPEN	NONE	BLUE
9176-1538	9175-0006	CKT 2, 5	b d		OPEN	OPEN	NONE	NONE
9176-1539	9175-0006	CKT 5, 6	c f		OPEN	OPEN	NONE	NONE
9176-1540	9175-0006	CKT 2, 4	d e		OPEN	OPEN	NONE	GREEN
9176-1541	9175-0006	NONE	a f g		OPEN	OPEN	NONE	NONE
9176-1542	9175-0006	NONE	NONE		OPEN	OPEN	NONE	RED
9176-1543	9175-0506	NONE	NONE		OPEN	OPEN	BETWEEN 5&6	NONE
9176-1544	9175-0006	NONE	c e g		OPEN	OPEN	NONE	RED
9176-1545	9175-0006	NONE	d f		OPEN	OPEN	NONE	BLACK

NOTES  
 1. + DENOTES TERMINAL VOIDED POSITION  
 ● DENOTES TERMINAL LOADED POSITION  
 | DENOTES POLARIZING RB POSITION  
 2. HOUSING NUMBER FOR MOLEX REFERENCE ONLY

SEE SHEET 1 ELEC. NO. 912016-0963 DRAWING NUMBER 2016/01/20 CHECKED APPROVED DATE	QUALITY SYMBOLS	GENERAL TOLERANCES (UNLESS SPECIFIED)	DIMENSION STYLE	SCALE	DESIGN UNITS	THIRD ANGLE PROJECTION
	4 PLACES ± 0.05 3 PLACES ± 0.10 2 PLACES ± 0.2 1 PLACE ± 0.5	mm INCH ± 0.10 ± 0.004 ± 0.25 ± 0.010 ± 0.50 ± 0.020	MM ONLY	1:1	METRIC	
	DRAWN BY: WKNAMAR DATE: 2004/02/12 CHECKED BY: JDENNEHY DATE: 2004/02/13 APPROVED BY: DATE: 2004/02/16 MATERIAL NO: BMAGU1RE	TITLE: APPLI-MATE 2.5 FEMALE (MATL: NYLON PA6) DOCUMENT NO: SD-91716-001 SHEET NO: 5 OF 10				
	DRAFT WHERE APPLICABLE MUST REMAIN WITHIN DIMENSIONS SEE CHARTS INCORPORATED AND SHOULD NOT BE USED WITHOUT WRITTEN PERMISSION					

19 18 17 16 15 14 13 12 11 10 9 8 7 6 5 4 3 2 1

20 19 18 17 16 15 14 13 12 11 10 9 8 7 6 5 4 3 2 1

6 CIRCUIT (cont'd)								
MOLEX PART NO.	MOLEX HOUSING NO.	TERMINAL VOID POSITION	REMOVED POSITION KEYS	CONFIGURATION (SEE NOTES)	END WALLS		POLARIZING RB	COLOUR STRIPE
					FIRST	LAST		
91716-1546	91715-0006	NONE	a d		OPEN	OPEN	NONE	NONE
91716-1547	91715-0006	NONE	b e f		OPEN	OPEN	NONE	NONE
91716-1548	91715-0006	NONE	c d e		OPEN	OPEN	NONE	NONE
91716-1549	91715-0406	NONE	NONE		OPEN	OPEN	<b>BETWEEN CRT 4&amp;5</b>	NONE
91716-1550	91715-0006	NONE	b d f		OPEN	OPEN	NONE	NONE
91716-1551	91715-0006	NONE	a c e g		OPEN	OPEN	NONE	NONE
91716-1552	91715-0006	NONE	a b d f		OPEN	OPEN	NONE	NONE
91716-1553	91715-0006	<b>CCT 2, 5</b>	c d		OPEN	OPEN	NONE	<b>BLACK</b>
91716-1554	91715-0006	<b>CCT 3, 4</b>	b		OPEN	OPEN	NONE	<b>RED</b>
91716-1555	91715-0006	NONE	c f		OPEN	OPEN	NONE	NONE
91716-1556	91715-0006	NONE	b d e g		OPEN	OPEN	NONE	NONE
91716-1557	91715-0006	<b>CCT 3&amp;4</b>	b g		OPEN	OPEN	NONE	<b>RED</b>
91716-1558	91715-0006	NONE	d f		OPEN	OPEN	NONE	NONE
91716-1559	91715-0006	<b>CCT 1</b>	NONE		OPEN	OPEN	NONE	NONE
91716-1560	91715-0006	NONE	a c e f g		OPEN	OPEN	NONE	NONE
91716-1561	91715-0006	NONE	a d g		OPEN	OPEN	NONE	NONE
91716-1562	91715-0006	NONE	a c d e f g		OPEN	OPEN	NONE	NONE
91716-1563	91715-0006	<b>CCT 5</b>	a c d e f g		OPEN	OPEN	NONE	NONE
91716-1564	91715-0006	<b>CCT 6</b>	a c d e f g		OPEN	OPEN	NONE	NONE

6 CIRCUIT (cont'd)								
MOLEX PART NO.	MOLEX HOUSING NO.	TERMINAL VOID POSITION	REMOVED POSITION KEYS	CONFIGURATION (SEE NOTES)	END WALLS		POLARIZING RB	COLOUR STRIPE
					FIRST	LAST		
91716-1565	91715-0006	<b>CCT 5</b>	NONE		OPEN	OPEN	NONE	NONE
91716-1566	<b>93473-0006</b>	NONE	NONE		OPEN	OPEN	NONE	NONE
91716-1567	<b>93473-0006</b>	NONE	d f		OPEN	OPEN	NONE	NONE
91716-1568	<b>93473-0006</b>	<b>CCT 1</b>	NONE		OPEN	OPEN	NONE	NONE
91716-1569	<b>93473-0006</b>	NONE	a c d e f g		OPEN	OPEN	NONE	NONE
91716-1570	<b>93473-0006</b>	<b>CCT 5</b>	a c d e f g		OPEN	OPEN	NONE	NONE
91716-1571	<b>93473-0006</b>	<b>CCT 5</b>	NONE		OPEN	OPEN	NONE	NONE
91716-1572	<b>93473-0006</b>	NONE	d		OPEN	OPEN	NONE	<b>PURPLE</b>
91716-1573	91715-0006	<b>CCT 2, 5</b>	c e g		OPEN	OPEN	NONE	<b>RED</b>

NOTES  
 1. + DENOTES TERMINAL VOIDED POSITION  
 ● DENOTES TERMINAL LOADED POSITION  
 † DENOTES POLARIZING RB POSITION  
 2. HOUSING NUMBER FOR MOLEX REFERENCE ONLY

SEE SHEET 1 Dwg. No. 091716-0063 DRAWING NUMBER CH-NO. 2016/01/20 APPROVED BY BG	QUALITY SYMBOLS	GENERAL TOLERANCES (UNLESS SPECIFIED)	DIMENSION STYLE	SCALE	DESIGN UNITS	THIRD ANGLE PROJECTION
	4 PLACES ± 0.10	mm INCH	MM ONLY	1:1	METRIC	
	3 PLACES ± 0.05					
	2 PLACES ± 0.20					
1 PLACE ± 0.2						
0 PLACE ±						
DRAFT WHERE APPLICABLE MUST REMAIN WITHIN DIMENSIONS		DRAWN BY: WNCMAR DATE: 2004/02/12		CHECKED BY: JDENNEHY DATE: 2004/02/13		APPROVED BY: SMAGUIRE DATE: 2004/02/16
ANGULAR ± 1/2°		SEE CHARTS		MATERIAL NO. SD-91716-001		DOCUMENT NO. SD-91716-001
THIS DRAWING CONTAINS INFORMATION THAT IS PROPRIETARY TO MOLEX INCORPORATED AND SHOULD NOT BE USED WITHOUT WRITTEN PERMISSION						SHEET NO. 6 OF 10

091716-0063 19 18 17 16 15 14 13 12 11 10 9 8 7 6 5 4 3 2 1

20 19 18 17 16 15 14 13 12 11 10 9 8 7 6 5 4 3 2 1

7 CIRCUIT				CONFIGURATION (SEE NOTES)	END WALLS		POLARIZING RIB	COLOUR STRIPE
MOLEX PART NO.	MOLEX HOUSING NO.	TERMINAL VOID POSITION	REMOVED POSITION KEYS		FIRST	LAST		
9176-2001	9175-0007	NONE	NONE	nnnnnnn 1232567	OPEN	OPEN	NONE	NONE
9176-2002	9175-0207	NONE	ALL	abcde fgh 1232567	OPEN	OPEN	BETWEEN CKT 2&3	NONE
9176-2004	9175-0007	NONE	a	nnnnnnn 1232567	OPEN	OPEN	NONE	NONE
9176-2005	9175-0007	CKT 2	h	nnnnnnh 1232567	OPEN	OPEN	NONE	NONE
9176-2006	9175-0007	CKT 4	a	nnnnnnn 1232567	OPEN	OPEN	NONE	NONE
9176-2007	9175-0007	CKT 2	NONE	nnnnnnn 1232567	OPEN	OPEN	NONE	NONE
9176-2008	9175-0007	CKT 6	NONE	nnnnnnn 1232567	OPEN	OPEN	NONE	NONE
9176-2009	9175-0007	CKT 2	b c e g	nncefn 1232567	OPEN	OPEN	NONE	BLUE
9176-2010	9175-0007	CKT 4, 6	b d f	nnbnfn 1232567	OPEN	OPEN	NONE	RED
9176-2011	9175-0007	CKT 4, 6	b d f	nnbnfn 1232567	OPEN	OPEN	NONE	BLUE
9176-2012	9175-0007	CKT 2	NONE	nnnnnnn 1232567	OPEN	OPEN	NONE	BLUE
9176-2013	9175-0007	CKT 2	b d e f h	nncefn 1232567	OPEN	OPEN	NONE	BLUE
9176-2014	9175-0007	CKT 4, 6	NONE	nnnnnnn 1232567	OPEN	OPEN	NONE	BLUE
9176-2015	9175-0007	CKT 4, 6	c d e f h	nncefn 1232567	OPEN	OPEN	NONE	BLUE
9176-2016	9175-0007	CKT 6	c d e f h	nncefn 1232567	OPEN	OPEN	NONE	BLUE
9176-2017	9175-0007	CKT 6	c d e f	nncefn 1232567	OPEN	OPEN	NONE	BLUE
9176-2018	9175-0007	CKT 6	NONE	nnnnnnn 1232567	OPEN	OPEN	NONE	BLUE
9176-2019	9175-0007	CKT 2	NONE	nnnnnnn 1232567	OPEN	OPEN	NONE	BLACK
9176-2020	9175-0007	NONE	a c e f h	nncefn 1232567	OPEN	OPEN	NONE	NONE
9176-2021	9175-0007	NONE	a	nnnnnnn 1232567	OPEN	OPEN	NONE	BLACK
9176-2022	9175-0007	NONE	b c d f	nnbnfn 1232567	OPEN	OPEN	NONE	NONE
9176-2023	9175-0007	NONE	a d	nnnnnnn 1232567	OPEN	OPEN	NONE	NONE
9176-2024	9175-0007	NONE	a b e f	nnbnfn 1232567	OPEN	OPEN	NONE	NONE
9176-2025	9175-0507	NONE	NONE	nnnnnnn 1232567	OPEN	OPEN	BETWEEN CKT 6&6	NONE
9176-2026	9175-0007	NONE	ALL	abcde fgh 1232567	OPEN	OPEN	NONE	NONE
9176-2027	9175-0007	CKT 6	a c d e f	nncefn 1232567	OPEN	OPEN	NONE	BLUE

7 CIRCUIT (cont'd)									
MOLEX PART NO.	MOLEX HOUSING NO.	TERMINAL VOID POSITION	REMOVED POSITION KEYS	CONFIGURATION (SEE NOTES)	END WALLS		POLARIZING RIB	COLOUR STRIPE	LOCKING RETENTION FEATURE
FIRST	LAST								
9176-2028	9175-0007	CKT 1,2,3,4,6	a c f	nnnnnnn 1232567	OPEN	OPEN	NONE	NONE	
9176-2029	9175-0007	CKT 4	a	nnnnnnn 1232567	OPEN	OPEN	NONE	RED	
9176-2030	88473-0307	NONE	ALL	abcde fgh 1232567	OPEN	OPEN	BETWEEN CKT 3&4	NONE	LOCKING RETENTION FEATURE
9176-2031	9175-0307	NONE	ALL	abcde fgh 1232567	OPEN	OPEN	BETWEEN CKT 3&4	NONE	
9176-2032	88473-0007	NONE	NONE	nnnnnnn 1232567	OPEN	OPEN	NONE	NONE	LOCKING RETENTION FEATURE
9176-2033	9175-0627	NONE	NONE	nnnnnnn 1232567	CLOSED	CLOSED	BETWEEN CKT 6&7	NONE	

NOTES

- + DENOTES TERMINAL VOIDED POSITION  
● DENOTES TERMINAL LOADED POSITION  
! DENOTES POLARIZING RIB POSITION

2. HOUSING NUMBER FOR MOLEX REFERENCE ONLY

SEE SHEET 1 EC NO. 162016-0063 DRAWN BY: MURPHY CHECKED: APPROVED BY: MURPHY DATE: 20/01/05 20/01/20	QUALITY SYMBOLS	GENERAL TOLERANCES (UNLESS SPECIFIED)	DIMENSION STYLE	SCALE	DESIGN UNITS	THIRD ANGLE PROJECTION	
		mm INCH	MM ONLY	1:1	METRIC		
		4 PLACES ± 0.10	DRAWN BY: MKNAMAR	DATE: 2004/02/12	APPLI-MATE 2.5 FEMALE (MATL: NYLON PA6)		
		3 PLACES ± 0.05	CHECKED BY: J DENNEHY	DATE: 2004/02/13			
	2 PLACES ± 0.10	APPROVED BY: BMAGUIRE	DATE: 2004/02/16	molex			
	1 PLACE ± 0.2			DOCUMENT NO. SD-91716-001			
	0 PLACE ±			SHEET NO. 7 OF 10			
DRAFT WHERE APPLICABLE MUST REMAIN WITHIN DIMENSIONS		SEE CHARTS		THIS DRAWING CONTAINS INFORMATION THAT IS PROPRIETARY TO MOLEX INCORPORATED AND SHOULD NOT BE USED WITHOUT WRITTEN PERMISSION			

16 Frame ALP AH-T Rev. E1 2010/01/25 19 18 17 16 15 14 13 12 11 10 9 8 7 6 5 4 3 2 1



20 19 18 17 16 15 14 13 12 11 10 9 8 7 6 5 4 3 2 1

8 CIRCUIT								
MOLEX PART NO.	MOLEX HOUSING NO.	TERMINAL VOID POSITION	REMOVED POSITION KEYS	CONFIGURATION (SEE NOTES)	END WALLS		POLARIZING RIB	COLOUR STRIPE
					FIRST	LAST		
91716-2501	91715-0008	NONE	NONE	nnnnnnnn ①②③④⑤⑥⑦⑧ 12345678	OPEN	OPEN	NONE	NONE
91716-2502	91715-0308	NONE	NONE	nnnnnnnn ①②③④⑤⑥⑦⑧ 12345678	OPEN	OPEN	BETWEEN CKT 3&4	NONE
91716-2503	91715-0008	NONE	c f h i	nn c n n l n h i ①②③④⑤⑥⑦⑧ 12345678	OPEN	OPEN	NONE	NONE
91716-2504	91715-0008	NONE	b c d h i	n b c d n n n h i ①②③④⑤⑥⑦⑧ 12345678	OPEN	OPEN	NONE	NONE
91716-2505	91715-0008	NONE	b c g h	n b c n n n g h i ①②③④⑤⑥⑦⑧ 12345678	OPEN	OPEN	NONE	BLUE
91716-2506	91715-0008	NONE	c f	nn c n n l n n n ①②③④⑤⑥⑦⑧ 12345678	OPEN	OPEN	NONE	NONE
91716-2507	91715-0008	NONE	c f h i	nn c n n l n h i ①②③④⑤⑥⑦⑧ 12345678	OPEN	OPEN	NONE	BLUE
91716-2508	91715-0008	NONE	NONE	nnnnnnnn ①②③④⑤⑥⑦⑧ 12345678	OPEN	OPEN	NONE	BLUE
91716-2509	91715-0008	NONE	a c d e g i	a n c d e g n i ①②③④⑤⑥⑦⑧ 12345678	OPEN	OPEN	NONE	BLUE
91716-2510	91715-0008	NONE	c d e f	nn c d e l n n n ①②③④⑤⑥⑦⑧ 12345678	OPEN	OPEN	NONE	BLUE
91716-2511	91715-0008	NONE	NONE	nnnnnnnn ①②③④⑤⑥⑦⑧ 12345678	OPEN	OPEN	NONE	BLACK
91716-2512	91715-0008	NONE	c f h i	nn c n n l n h i ①②③④⑤⑥⑦⑧ 12345678	OPEN	OPEN	NONE	BLACK
91716-2513	91715-0008	NONE	c d g h	n n c d n n g h i ①②③④⑤⑥⑦⑧ 12345678	OPEN	OPEN	NONE	NONE
91716-2514	91715-0008	NONE	a c d e f g h i	a n c d e f g h i ①②③④⑤⑥⑦⑧ 12345678	OPEN	OPEN	NONE	BLUE
91716-2515	91715-0008	NONE	a b d f h i	a b n d n l n h i ①②③④⑤⑥⑦⑧ 12345678	OPEN	OPEN	NONE	NONE
91716-2516	91715-0008	NONE	b c d h i	n b c d n n n h i ①②③④⑤⑥⑦⑧ 12345678	OPEN	OPEN	NONE	BLUE
91716-2517	91715-0008	NONE	NONE	nnnnnnnn ①②③④⑤⑥⑦⑧ 12345678	OPEN	OPEN	BETWEEN CKT 1&2 + CKT 7&8	NONE
91716-2518	91715-0008	NONE	b c d f h i	n b c d n l n h i ①②③④⑤⑥⑦⑧ 12345678	OPEN	OPEN	NONE	NONE
91716-2519	91715-0008	NONE	a c e f h i	a n c e f n h i ①②③④⑤⑥⑦⑧ 12345678	OPEN	OPEN	NONE	NONE
91716-2520	91715-0008	NONE	ALL	a b c d e f g h ①②③④⑤⑥⑦⑧ 12345678	OPEN	OPEN	NONE	NONE
91716-2521	91715-0008	CKT 7, 8	a b d f h i	a b n d n l n h i ①②③④⑤⑥⑦⑧ 12345678	OPEN	OPEN	NONE	NONE
91716-2522	91715-0008	NONE	b c d f h i	n b c d n l n h i ①②③④⑤⑥⑦⑧ 12345678	OPEN	OPEN	NONE	BLUE

NOTES  
 1. + DENOTES TERMINAL VOIDED POSITION  
 ● DENOTES TERMINAL LOADED POSITION  
 | DENOTES POLARIZING RIB POSITION  
 2. HOUSING NUMBER FOR MOLEX REFERENCE ONLY

SEE SHEET 1 REC. NO. 162016-0963 DRAWN BY MURPHY CHECKED CHAND APPROVED BY MURPHY DATE 2016/01/05 2016/01/20	QUALITY SYMBOLS	GENERAL TOLERANCES (UNLESS SPECIFIED)	DIMENSION STYLE	SCALE	DESIGN UNITS	THIRD ANGLE PROJECTION	
	▽=0	mm INCH	MM ONLY	1:1	METRIC		
		4 PLACES ±.005	DRAWN BY WKNAMAR	DATE 2004/02/12	TITLE	APPLI-MATE 2.5 FEMALE (MATL: NYLON PA6)	
		3 PLACES ±.010	CHECKED BY JDENNEHY	DATE 2004/02/13	APPROVED BY	molex	
	2 PLACES ±.020	1 PLACE ±.040	ANGULAR ±1/2°	DRAFT WHERE APPLICABLE MUST REMAIN WITHIN DIMENSIONS	SEE CHARTS	INCORPORATED AND SHOULD NOT BE USED WITHOUT WRITTEN PERMISSION	
	0 PLACE ±						

16 Frame AT P AM-T Rev E1 2010/01/25 19 18 17 16 15 14 13 12 11 10 9 8 7 6 5 4 3 2 1

8 CIRCUIT (cont'd)									
MOLEX PART NO.	MOLEX HOUSING NO.	TERMINAL VOID POSITION	REMOVED POSITION KEYS	CONFIGURATION (SEE NOTES)	END WALLS		POLARIZING RB	COLOUR STRIPE	
					FIRST	LAST			
9176-2521	9175-0008	CKT 7, 8	a b d f h i		OPEN	OPEN	NONE	NONE	
9176-2522	9175-0008	NONE	b c d f h i		OPEN	OPEN	NONE	BLUE	

10 CIRCUIT									
MOLEX PART NO.	MOLEX HOUSING NO.	TERMINAL VOID POSITION	REMOVED POSITION KEYS	CONFIGURATION (SEE NOTES)	END WALLS		POLARIZING RB	COLOUR STRIPE	
					FIRST	LAST			
9176-3501	9175-0010	NONE	NONE		OPEN	OPEN	NONE	NONE	
9176-3502	9175-0210	NONE	ALL		OPEN	OPEN	BETWEEN CKT 2&3	NONE	
9176-3503	9175-0010	CKT 2, 5, 7, 9	NONE		OPEN	OPEN	NONE	NONE	
9176-3504	9175-0410	NONE	NONE		OPEN	OPEN	BETWEEN CKT 4&5	NONE	

9 CIRCUIT									
MOLEX PART NO.	MOLEX HOUSING NO.	TERMINAL VOID POSITION	REMOVED POSITION KEYS	CONFIGURATION (SEE NOTES)	END WALLS		POLARIZING RB	COLOUR STRIPE	
					FIRST	LAST			
9176-3001	9175-0009	NONE	NONE		OPEN	OPEN	NONE	NONE	
9176-3002	9175-0409	NONE	NONE		OPEN	OPEN	BETWEEN CKT 4&5	NONE	
9176-3003	9175-0009	CKT 2, 5, 8	NONE		OPEN	OPEN	NONE	NONE	
9176-3004	9175-0209	NONE	NONE		OPEN	OPEN	BETWEEN CKT 2&3	NONE	
9176-3005	9175-0009	CKT 2, 5, 8	b c e g i j		OPEN	OPEN	NONE	GREEN	
9176-3006	9175-0009	CKT 2, 5, 8	NONE		OPEN	OPEN	NONE	GREEN	
9176-3007	9175-0009	CKT 2, 5, 8	b c e f g i j		OPEN	OPEN	NONE	GREEN	
9176-3008	9175-0009	CKT 2, 5, 8	b c e f g i		OPEN	OPEN	NONE	GREEN	
9176-3009	9175-0009	CKT 2, 5, 7	c g		OPEN	OPEN	NONE	NONE	
9176-3010	9175-0009	CKT 2, 5, 8	b c h i		OPEN	OPEN	NONE	NONE	
9176-3011	9175-0709	NONE	NONE		OPEN	OPEN	BETWEEN CKT 7&8	NONE	
9176-3012	9175-0509	NONE	NONE		OPEN	OPEN	BETWEEN CKT 5&6	NONE	
9176-3013	9175-0029	NONE	NONE		CLOSED	CLOSED	NONE	NONE	

11 CIRCUIT									
MOLEX PART NO.	MOLEX HOUSING NO.	TERMINAL VOID POSITION	REMOVED POSITION KEYS	CONFIGURATION (SEE NOTES)	END WALLS		POLARIZING RB	COLOUR STRIPE	
					FIRST	LAST			
9176-4001	9175-0011	NONE	NONE		OPEN	OPEN	NONE	NONE	
9176-4002	9175-0031	NONE	NONE		CLOSED	CLOSED	NONE	NONE	
9176-4003	9175-0511	NONE	NONE		OPEN	OPEN	BETWEEN CKT 5&6	NONE	
9176-4004	9175-1031	NONE	NONE		CLOSED	CLOSED	BETWEEN CKT 10&11	NONE	
9176-4005	9175-1011	NONE	NONE		OPEN	OPEN	BETWEEN CKT 10&11	NONE	

12 CIRCUIT									
MOLEX PART NO.	MOLEX HOUSING NO.	TERMINAL VOID POSITION	REMOVED POSITION KEYS	CONFIGURATION (SEE NOTES)	END WALLS		POLARIZING RB	COLOUR STRIPE	
					FIRST	LAST			
9176-4501	9175-0012	NONE	NONE		OPEN	OPEN	NONE	NONE	
9176-4502	9175-0012	CKT 2, 5, 8, 11	b c d e j k l		OPEN	OPEN	NONE	GREEN	
9176-4503	9175-0012	CKT 2, 5, 8, 11	NONE		OPEN	OPEN	NONE	GREEN	
9176-4504	9175-0012	CKT 2, 5, 8, 11	a c d e g h i k l m		OPEN	OPEN	NONE	GREEN	
9176-4505	9175-0012	CKT 2, 5, 8, 11	c d e g h i k l m		OPEN	OPEN	NONE	GREEN	

NOTES  
 1. \* DENOTES TERMINAL VOIDED POSITION  
 ● DENOTES TERMINAL LOADED POSITION  
 † DENOTES POLARIZING RB POSITION  
 2. HOUSING NUMBER FOR MOLEX REFERENCE ONLY

QUALITY SYMBOLS 	GENERAL TOLERANCES (UNLESS SPECIFIED)		DIMENSION STYLE		SCALE	DESIGN UNITS	THIRD ANGLE PROJECTION
		mm	INCH	MM ONLY		5:1	METRIC
	4 PLACES	± 0.05	± 0.0025	DRAWN BY	DATE	TITLE	
	3 PLACES	± 0.10	± 0.0050	WKNAMAR	2004/02/12	APPLI-MATE 2.5 FEMALE (MATL: NYLON PA6)	
2 PLACES	± 0.20	± 0.0100	CHECKED BY	DATE			
1 PLACE	± 0.50	± 0.0250	JDENEHY	2004/02/13			
0 PLACE	± 1.00	± 0.0500	APPROVED BY	DATE			
			BMAGUIRE	2004/02/16			
DRAFT WHERE APPLICABLE MUST REMAIN WITHIN DIMENSIONS		ANGULAR ±1/2°		SEE CHARTS		DOCUMENT NO.	SHEET NO.
				INCORPORATED AND SHOULD NOT BE USED WITHOUT WRITTEN PERMISSION		SD-91716-001	9 OF 10

### 13 CIRCUIT

MOLEX PART NO.	MOLEX HOUSING NO.	TERMINAL VOID POSITION	REMOVED POSITION KEYS	CONFIGURATION (SEE NOTES)	END WALLS		POLARIZING RIB	COLOUR STRIPE
					FIRST	LAST		
91716-5001	91715-0013	NONE	NONE		OPEN	OPEN	NONE	NONE
91716-5002	91715-0013	<b>CKT 4, 6, 8, 10, 12</b>	NONE		OPEN	OPEN	NONE	NONE
91716-5003	91715-0013	NONE	c f h i k l		OPEN	OPEN	NONE	NONE

### 17 CIRCUIT

MOLEX PART NO.	MOLEX HOUSING NO.	TERMINAL VOID POSITION	REMOVED POSITION KEYS	CONFIGURATION (SEE NOTES)	END WALLS		POLARIZING RIB	COLOUR STRIPE
					FIRST	LAST		
91716-7001	91715-0017	NONE	NONE		OPEN	OPEN	NONE	NONE

### 14 CIRCUIT

MOLEX PART NO.	MOLEX HOUSING NO.	TERMINAL VOID POSITION	REMOVED POSITION KEYS	CONFIGURATION (SEE NOTES)	END WALLS		POLARIZING RIB	COLOUR STRIPE
					FIRST	LAST		
91716-5501	91715-0014	NONE	NONE		OPEN	OPEN	NONE	NONE

### 18 CIRCUIT

MOLEX PART NO.	MOLEX HOUSING NO.	TERMINAL VOID POSITION	REMOVED POSITION KEYS	CONFIGURATION (SEE NOTES)	END WALLS		POLARIZING RIB	COLOUR STRIPE
					FIRST	LAST		
91716-7501	91715-0018	NONE	NONE		OPEN	OPEN	NONE	NONE

### 15 CIRCUIT

MOLEX PART NO.	MOLEX HOUSING NO.	TERMINAL VOID POSITION	REMOVED POSITION KEYS	CONFIGURATION (SEE NOTES)	END WALLS		POLARIZING RIB	COLOUR STRIPE
					FIRST	LAST		
91716-6001	91715-0015	NONE	NONE		OPEN	OPEN	NONE	NONE
91716-6002	91715-0015	<b>CKT 4, 6, 8, 10, 12, 14</b>	o p		OPEN	OPEN	NONE	NONE
91716-6003	91715-0015	NONE	a p		OPEN	OPEN	<b>BETWEEN 8 &amp; 6</b>	NONE

### 19 CIRCUIT

MOLEX PART NO.	MOLEX HOUSING NO.	TERMINAL VOID POSITION	REMOVED POSITION KEYS	CONFIGURATION (SEE NOTES)	END WALLS		POLARIZING RIB	COLOUR STRIPE
					FIRST	LAST		
91716-8001	91715-0019	NONE	NONE		OPEN	OPEN	NONE	NONE

### 16 CIRCUIT

MOLEX PART NO.	MOLEX HOUSING NO.	TERMINAL VOID POSITION	REMOVED POSITION KEYS	CONFIGURATION (SEE NOTES)	END WALLS		POLARIZING RIB	COLOUR STRIPE
					FIRST	LAST		
91716-6501	91715-0016	NONE	NONE		OPEN	OPEN	NONE	NONE

### 20 CIRCUIT

MOLEX PART NO.	MOLEX HOUSING NO.	TERMINAL VOID POSITION	REMOVED POSITION KEYS	CONFIGURATION (SEE NOTES)	END WALLS		POLARIZING RIB	COLOUR STRIPE
					FIRST	LAST		
91716-8501	91715-0020	NONE	NONE		OPEN	OPEN	NONE	NONE

- NOTES:
- + DENOTES TERMINAL VOIDED POSITION  
● DENOTES TERMINAL LOADED POSITION  
| DENOTES POLARIZING RIB POSITION
  - HOUSING NUMBER FOR MOLEX REFERENCE ONLY

QUALITY SYMBOLS 	GENERAL TOLERANCES (UNLESS SPECIFIED) 2 PLACES ± 0.05 3 PLACES ± 0.10 4 PLACES ± 0.20 5 PLACES ± 0.30 6 PLACES ± 0.40 7 PLACES ± 0.50 8 PLACES ± 0.63 9 PLACES ± 0.80 10 PLACES ± 1.00 11 PLACES ± 1.25 12 PLACES ± 1.60 13 PLACES ± 2.00 14 PLACES ± 2.50 15 PLACES ± 3.15 16 PLACES ± 4.00 17 PLACES ± 5.00 18 PLACES ± 6.30 19 PLACES ± 8.00 20 PLACES ± 10.00	DIMENSION STYLE MM ONLY	SCALE 1:1	DESIGN UNITS METRIC	THIRD ANGLE PROJECTION	DRAWN BY: NKNAMAR DATE: 2004/02/12 CHECKED BY: JDENNEHY DATE: 2004/02/13 APPROVED BY: BMAGUIRE DATE: 2004/02/16	TITLE: APPLI-MATE 2.5 FEMALE (MATL: NYLON PA6)
						MATERIAL: NYLON PA6 DOCUMENT NO.: SD-91716-001 SHEET NO.: 10 OF 10	