

Excellent Integrated System Limited

Stocking Distributor

Click to view price, real time Inventory, Delivery & Lifecycle Information:

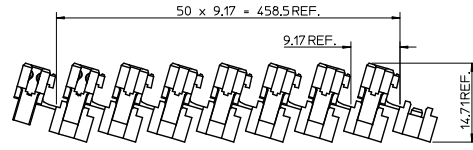
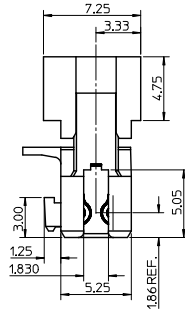
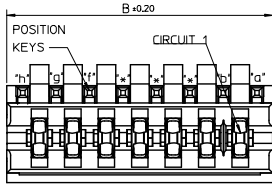
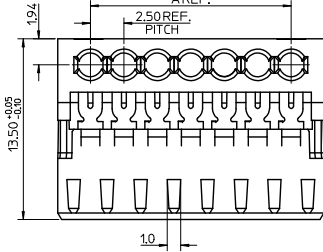
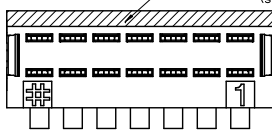
[Molex Connector Corporation](#)
[0917166501](#)

For any questions, you can email us directly:

sales@integrated-circuit.com

13 12 11 10 9 8 7 6 5 4 3 2 1

EM-91716-010 SURFACE FOR COLOUR STRIPE (see note 3)

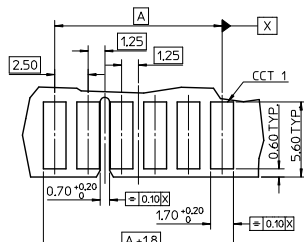


SHIPPING ARRANGEMENT

CCT	'A'	'B'
3	5.0	9.875
4	7.5	12.375
5	10.0	14.875
6	12.5	17.375
7	15.0	19.875
8	17.5	22.375
9	20.0	24.875
10	22.5	27.375
11	25.0	29.875
12	27.5	32.375
13	30.0	34.875
14	32.5	37.375
15	35.0	39.875
16	37.5	42.375
17	40.0	44.875
18	42.5	47.375
19	45.0	49.875
20	47.5	52.375

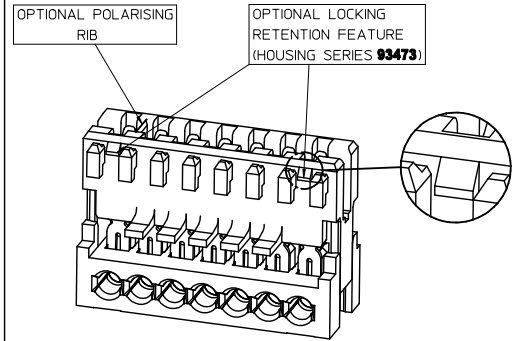
NOTES:

- REFER TO PRODUCT SPECIFICATION: PS-99020-0040.
- MATERIAL: HOUSING - NYLON PA6
UL94-V0, COLOUR: NATURAL (WHITE).
TERMINAL: PHOSPHOR BRONZE 0.30 REF. THICK - PLATING HOT TIN DIP.
- COLOUR STRIPE IS OPTIONAL, AVAILABLE IN THE FOLLOWING COLOURS: RED, GREEN, BLUE, PURPLE
(**BOLD** SIGNIFIES CUSTOMER SPECIFIC CONFIGURATION).
- REFER TO PACKAGING SPEC (PK-90871-001)
- REFER TO APPLICATION SPEC (AS-99033-0008)



- PCB LAYOUT FOR 6CCT CONNECTOR (WITH OPTIONAL POSITIONAL RIB SLOT BETWEEN CCT 4 & 5)
- RECOMMENDED PCB THICKNESS 1.5±0.14

OPTIONAL PART FEATURES



SEE SUBSEQUENT SHEETS FOR RELEVANT PART NUMBERS.
*LOCKING RETENTION FEATURE AVAILABLE **FIRST** AND **LAST** CIRCUIT ONLY
SMALLEST CIRCUIT SIZE AVAILABLE WITH LOCKING RETENTION FEATURE IS 5 CKT

13 12 11 10 9 8 7 6 5 4 3 2 1

ib_frame_A2_P_AM_1 Rev E1 2012/01/25

DOC. MAINTENANCE EC NO: PG2016-0963 DRAWN: J MURPHY 2016/01/05 CHKD: APPR: SHAMHAN 2016/01/20 BG	QUALITY SYMBOLS ▽=0 ▽=0	GENERAL TOLERANCES (UNLESS SPECIFIED)		DIMENSION STYLE MM ONLY		SCALE 5:1	DESIGN UNITS METRIC	THIRD ANGLE PROJECTION	
		4 PLACES ± --- ± --- 3 PLACES ± 0.05 ± --- 2 PLACES ± 0.10 ± --- 1 PLACE ± 0.2 ± --- 0 PLACE ± --- ± ---	mm INCH ± --- ± --- ± 0.05 ± --- ± 0.10 ± --- ± 0.2 ± --- ± --- ± ---	DRAWN BY MCMAMAR 2004/02/12 CHECKED BY J DENNEHY 2004/02/13 APPROVED BY BMAGUIRE 2004/02/16	DATE DATE DATE	TITLE APPLI-MATE 2.5 FEMALE (MATL: NYLON PA6)		MATERIAL NO. SEE SHEETS 2-10	
DRAFT WHERE APPLICABLE MUST REMAIN WITHIN DIMENSIONS		THIS DRAWING CONTAINS INFORMATION THAT IS PROPRIETARY TO MOLEX INCORPORATED AND SHOULD NOT BE USED WITHOUT WRITTEN PERMISSION							

3 CIRCUIT								
MOLEX PART NO.	MOLEX HOUSING NO.	TERMINAL VOID POSITION	REMOVED POSITION KEYS	CONFIGURATION (SEE NOTES)	END WALLS		POLARIZING RIB	COLOUR STRIPE
					FIRST	LAST		
91716-0001	91715-0003	NONE	NONE		OPEN	OPEN	NONE	NONE
91716-0002	91715-0003	NONE	a d		OPEN	OPEN	NONE	RED
91716-0013	91715-0003	NONE	a		OPEN	OPEN	NONE	NONE
91716-0014	91715-0003	NONE	b		OPEN	OPEN	NONE	NONE
91716-0015	91715-0003	NONE	c		OPEN	OPEN	NONE	NONE
91716-0016	91715-0003	NONE	d		OPEN	OPEN	NONE	NONE
91716-0017	91715-0003	NONE	b d		OPEN	OPEN	NONE	NONE
91716-0018	91715-0003	NONE	a c		OPEN	OPEN	NONE	NONE
91716-0019	91715-0003	NONE	a d		OPEN	OPEN	NONE	NONE
91716-0020	91715-0003	NONE	a b		OPEN	OPEN	NONE	NONE
91716-0021	91715-0003	NONE	b c		OPEN	OPEN	NONE	NONE
91716-0022	91715-0003	NONE	c d		OPEN	OPEN	NONE	NONE
91716-0023	91715-0003	CKT 2	b d		OPEN	OPEN	NONE	NONE
91716-0024	91715-0003	CKT 3	c		OPEN	OPEN	NONE	BLUE
91716-0034	91715-0103	NONE	NONE		OPEN	OPEN	BETWEEN CKT 1&2	NONE
91716-0041	91715-0203	NONE	NONE		OPEN	OPEN	BETWEEN CKT 2&3	NONE
91716-0042	91715-0003	CKT 1	NONE		OPEN	OPEN	NONE	NONE
91716-0043	91715-0003	CKT 1	c		OPEN	OPEN	NONE	NONE
91716-0044	91715-0003	NONE	b d		OPEN	OPEN	NONE	BLUE
91716-0045	91715-0003	NONE	b		OPEN	OPEN	NONE	BLUE
91716-0046	91715-0003	CKT 1	d		OPEN	OPEN	NONE	NONE
91716-0047	91715-0003	NONE	b d		OPEN	OPEN	NONE	RED
91716-0048	91715-0003	NONE	b c d		OPEN	OPEN	NONE	NONE
91716-0049	91715-0003	NONE	c		OPEN	OPEN	NONE	PURPLE
91716-0050	91715-9903	NONE	NONE		OPEN	NARROW	NONE	NONE

3 CIRCUIT (cont'd)								
MOLEX PART NO.	MOLEX HOUSING NO.	TERMINAL VOID POSITION	REMOVED POSITION KEYS	CONFIGURATION (SEE NOTES)	END WALLS		POLARIZING RIB	COLOUR STRIPE
					FIRST	LAST		
91716-0051	91715-0003	NONE	d		OPEN	OPEN	NONE	BLACK

NOTES
 1. + DENOTES TERMINAL VOIDED POSITION
 ● DENOTES TERMINAL LOADED POSITION
 † DENOTES POLARIZING RIB POSITION
 2. HOUSING NUMBER FOR MOLEX REFERENCE ONLY

SEE SHEET 1 0917166501-0063 DRAWING MURPHY 20/01/05 CHECKED: CHANDU APPROVED: SURESH DATE: 20/01/05	QUALITY SYMBOLS	GENERAL TOLERANCES (UNLESS SPECIFIED)	DIMENSION STYLE	SCALE	DESIGN UNITS	THIRD ANGLE PROJECTION
		mm INCH 4 PLACES ±--- ±--- 3 PLACES ±0.05 ±--- 2 PLACES ±0.10 ±--- 1 PLACE ±0.2 ±--- 0 PLACE ±--- ±---	MM ONLY	1:1	METRIC	
	DRAWN BY: MKNAMAR DATE: 2004/02/12 CHECKED BY: DATE: J DENNEHY 2004/02/13 APPROVED BY: DATE: BMAGUIRE 2004/02/16	TITLE: APPLI-MATE 2.5 FEMALE (MATL: NYLON PA6)				
	MATERIAL NO. SD-91716-001		DOCUMENT NO. SD-91716-001		SHEET NO. 2 OF 10	

INCORPORATED AND SHOULD NOT BE USED WITHOUT WRITTEN PERMISSION

20 19 18 17 16 15 14 13 12 11 10 9 8 7 6 5 4 3 2 1

4 CIRCUIT								
MOLEX PART NO.	MOLEX HOUSING NO.	TERMINAL VOID POSITION	REMOVED POSITION KEYS	CONFIGURATION (SEE NOTES)	END WALLS		POLARIZING RIB	COLOUR STRIPE
					FIRST	LAST		
91716-0501	91715-0004	NONE	NONE		OPEN	OPEN	NONE	NONE
91716-0502	91715-0004	NONE	d		OPEN	OPEN	NONE	NONE
91716-0503	91715-0004	NONE	a d		OPEN	OPEN	NONE	NONE
91716-0504	91715-0004	NONE	c e		OPEN	OPEN	NONE	NONE
91716-0505	91715-0004	NONE	a		OPEN	OPEN	NONE	NONE
91716-0506	91715-0204	NONE	NONE		OPEN	OPEN	BETWEEN CKT 283	NONE
91716-0538	91715-0004	NONE	b		OPEN	OPEN	NONE	NONE
91716-0530	91715-0004	NONE	b c		OPEN	OPEN	NONE	NONE
91716-0539	91715-0004	NONE	a b		OPEN	OPEN	NONE	NONE
91716-0540	91715-0004	NONE	d e		OPEN	OPEN	NONE	NONE
91716-0541	91715-0004	NONE	ALL		OPEN	OPEN	NONE	NONE
91716-0542	91715-0004	NONE	a b e		OPEN	OPEN	NONE	NONE
91716-0507	91715-0004	CKT 1	NONE		OPEN	OPEN	NONE	NONE
91716-0543	91715-0304	NONE	NONE		OPEN	OPEN	BETWEEN CKT 344	RED
91716-0544	91715-0204	NONE	NONE		OPEN	OPEN	BETWEEN CKT 283	BLUE
91716-0545	91715-0004	NONE	d		OPEN	OPEN	NONE	BLUE
91716-0546	91715-0004	NONE	b		OPEN	OPEN	NONE	RED
91716-0547	91715-0004	NONE	b c		OPEN	OPEN	NONE	GREEN
91716-0548	91715-0004	NONE	c d		OPEN	OPEN	NONE	RED
91716-0549	91715-0004	NONE	a c e		OPEN	OPEN	NONE	NONE

4 CIRCUIT (cont'd)								
MOLEX PART NO.	MOLEX HOUSING NO.	TERMINAL VOID POSITION	REMOVED POSITION KEYS	CONFIGURATION (SEE NOTES)	END WALLS		POLARIZING RIB	COLOUR STRIPE
					FIRST	LAST		
91716-0550	91715-0104	NONE	NONE		OPEN	OPEN	BETWEEN CKT 182	NONE
91716-0551	91715-0004	NONE	NONE		OPEN	OPEN	NONE	GREEN
91716-0552	91715-0004	NONE	b c d		OPEN	OPEN	NONE	NONE
91716-0553	91715-0004	NONE	b d		OPEN	OPEN	NONE	NONE
91716-0554	91715-0004	NONE	a b d		OPEN	OPEN	NONE	NONE
91716-0555	91715-0004	NONE	a c e		OPEN	OPEN	NONE	BLACK
91716-0556	91715-0004	NONE	a e		OPEN	OPEN	NONE	NONE
91716-0557	91715-0104	NONE	a b d e		OPEN	OPEN	BETWEEN CKT 182	NONE
91716-0558	91715-0004	NONE	a c		OPEN	OPEN	NONE	NONE
91716-0559	91715-0004	NONE	b e		OPEN	OPEN	NONE	NONE

- NOTES
- + DENOTES TERMINAL VOIDED POSITION
● DENOTES TERMINAL LOADED POSITION
| DENOTES POLARIZING RIB POSITION
 - HOUSING NUMBER FOR MOLEX REFERENCE ONLY

SEE SHEET 1 SEC. NO. 162016-0063 DRAWN BY: MURPHY CHECKED: CHANDRAN APPROVED BY: CHANDRAN DATE: 20/01/05 20/01/05	QUALITY SYMBOLS	GENERAL TOLERANCES (UNLESS SPECIFIED)	DIMENSION STYLE	SCALE	DESIGN UNITS	THIRD ANGLE PROJECTION	
		mm INCH	MM ONLY	5:1	METRIC		
		4 PLACES ±.005	DRAWN BY: WKNAMAR DATE: 2004/02/12	TITLE: APPLI-MATE 2.5 FEMALE (MATL: NYLON PA6)			
		3 PLACES ±.010	CHECKED BY: J DENNEHY DATE: 2004/02/13				
	2 PLACES ±.020	APPROVED BY: BMAGUIRE DATE: 2004/02/16	PATENT NO. DOCUMENT NO. SD-91716-001 SHEET NO. 3 OF 10				
	1 PLACE ±.040	ANGULAR ±1/2°	SEE CHARTS				
	0 PLACE ±.080	DRAFT WHERE APPLICABLE MUST REMAIN WITHIN DIMENSIONS	THIS DRAWING CONTAINS INFORMATION THAT IS PROPRIETARY TO MOLEX INCORPORATED AND SHOULD NOT BE USED WITHOUT WRITTEN PERMISSION				

19 18 17 16 15 14 13 12 11 10 9 8 7 6 5 4 3 2 1

5 CIRCUIT									5 CIRCUIT								
MOLEX PART NO.	MOLEX HOUSING NO.	TERMINAL VOID POSITION	REMOVED POSITION KEYS	CONFIGURATION (SEE NOTES)	END WALLS FIRST	END WALLS LAST	POLARIZING RB	COLOUR STRIPE	MOLEX PART NO.	MOLEX HOUSING NO.	TERMINAL POSITION KEYS	REMOVED	CONFIGURATION (SEE NOTES)	END WALLS FIRST	END WALLS LAST	POLARIZING RB	COLOUR STRIPE
91716-1001	91715-0005	NONE	NONE	⓪⓪⓪⓪⓪⓪ 12345	OPEN	OPEN	NONE	NONE	91716-1026	93473-0205	NONE	ALL	⓪⓪⓪⓪⓪⓪ 12345	OPEN	OPEN	BETWEEN CKT 2&3	NONE
91716-1002	91715-0305	NONE	ALL	⓪⓪⓪⓪⓪⓪ 12345	OPEN	OPEN	BETWEEN CKT 3&4	NONE	91716-1027	91715-0205	NONE	ALL	⓪⓪⓪⓪⓪⓪ 12345	OPEN	OPEN	BETWEEN CKT 2&3	NONE
91716-1003	91715-0405	NONE	NONE	⓪⓪⓪⓪⓪⓪ 12345	OPEN	OPEN	BETWEEN CKT 4&5	NONE	91716-1028	93473-0005	NONE	NONE	⓪⓪⓪⓪⓪⓪ 12345	OPEN	OPEN	NONE	NONE
91716-1004	91715-0005	NONE	c d	⓪⓪⓪⓪⓪⓪ 12345	OPEN	OPEN	NONE	NONE									
91716-1005	91715-0005	NONE	a	⓪⓪⓪⓪⓪⓪ 12345	OPEN	OPEN	NONE	NONE									
91716-1006	91715-0005	NONE	b	⓪⓪⓪⓪⓪⓪ 12345	OPEN	OPEN	NONE	NONE									
91716-1007	91715-0005	NONE	a b e f	⓪⓪⓪⓪⓪⓪ 12345	OPEN	OPEN	NONE	NONE									
91716-1008	91715-0205	NONE	NONE	⓪⓪⓪⓪⓪⓪ 12345	OPEN	OPEN	BETWEEN CKT 2&3	NONE									
91716-1009	91715-0005	CKT 2, 3, 4	NONE	⓪⓪⓪⓪⓪⓪ 12345	OPEN	OPEN	NONE	NONE									
91716-1010	91715-0005	CKT 2	c	⓪⓪⓪⓪⓪⓪ 12345	OPEN	OPEN	NONE	NONE									
91716-1011	91715-0005	CKT 2	d	⓪⓪⓪⓪⓪⓪ 12345	OPEN	OPEN	NONE	NONE									
91716-1012	91715-0005	CKT 2	b	⓪⓪⓪⓪⓪⓪ 12345	OPEN	OPEN	NONE	NONE									
91716-1013	91715-0005	CKT 2	a	⓪⓪⓪⓪⓪⓪ 12345	OPEN	OPEN	NONE	NONE									
91716-1014	91715-0005	NONE	b c d e	⓪⓪⓪⓪⓪⓪ 12345	OPEN	OPEN	NONE	NONE									
91716-1015	91715-0305	CKT 2,3,4	NONE	⓪⓪⓪⓪⓪⓪ 12345	OPEN	OPEN	BETWEEN CKT 3&4	RED									
91716-1016	91715-0005	CKT 2	b	⓪⓪⓪⓪⓪⓪ 12345	OPEN	OPEN	NONE	RED									
91716-1017	91715-0005	NONE	d e	⓪⓪⓪⓪⓪⓪ 12345	OPEN	OPEN	NONE	NONE									
91716-1018	91715-0005	NONE	a d f	⓪⓪⓪⓪⓪⓪ 12345	OPEN	OPEN	NONE	NONE									
91716-1019	91715-0105	NONE	NONE	⓪⓪⓪⓪⓪⓪ 12345	OPEN	OPEN	BETWEEN CKT 1&2	NONE									
91716-1020	91715-0005	CKT 2, 3, 4	b	⓪⓪⓪⓪⓪⓪ 12345	OPEN	OPEN	NONE	NONE									
91716-1021	91715-0005	NONE	d	⓪⓪⓪⓪⓪⓪ 12345	OPEN	OPEN	NONE	NONE									
91716-1022	91715-0005	NONE	b f	⓪⓪⓪⓪⓪⓪ 12345	OPEN	OPEN	NONE	RED									
91716-1023	91715-0005	CKT 2, 3, 4	c e	⓪⓪⓪⓪⓪⓪ 12345	OPEN	OPEN	NONE	NONE									
91716-1024	91715-0205	NONE	a b e f	⓪⓪⓪⓪⓪⓪ 12345	OPEN	OPEN	BETWEEN CKT 2&3	NONE									
91716-1025	91715-0005	CKT 2, 3, 4	c f	⓪⓪⓪⓪⓪⓪ 12345	OPEN	OPEN	NONE	NONE									

NOTES
 1. + DENOTES TERMINAL VOIDED POSITION
 ● DENOTES TERMINAL LOADED POSITION
 † DENOTES POLARIZING RB POSITION
 2. HOUSING NUMBER FOR MOLEX REFERENCE ONLY

SEE SHEET 1 SECTION 091716-0963 DRAWN: JIM HARRY 2016/01/05 CHECK: APPELISHANMALL 2016/01/20 REV: BG	QUALITY SYMBOLS	GENERAL TOLERANCES (UNLESS SPECIFIED)	DIMENSION STYLE	SCALE	DESIGN UNITS	THIRD ANGLE PROJECTION
		mm INCH	MM ONLY	5:1	METRIC	
	4 PLACES ±---	±---	DRAWN BY	DATE	TITLE	
	3 PLACES ±0.05	±---	NHCNAMAR	2004/02/12	APPLI-MATE 2.5 FEMALE (MATL: NYLON PA6)	
2 PLACES ±0.10	±---	CHECKED BY	DATE			
1 PLACE ±0.2	±---	JDENNEHY	2004/02/13			
0 PLACE ±	±	APPROVED BY	DATE			
		BHAGUIRE	2004/02/16			
	ANGULAR ±1/2°			MATERIAL NO.	DOCUMENT NO.	SHEET NO.
	DRAFT WHERE APPLICABLE MUST REMAIN WITHIN DIMENSIONS	SEE CHARTS			SD-91716-001	4 OF 10
		SIZE A		THIS DRAWING CONTAINS INFORMATION THAT IS PROPRIETARY TO MOLEX INCORPORATED AND SHOULD NOT BE USED WITHOUT WRITTEN PERMISSION		

20	19	18	17	16	15	14	13	12	11	10	9	8	7	6	5	4	3	2	1
----	----	----	----	----	----	----	----	----	----	----	---	---	---	---	---	---	---	---	---

6 CIRCUIT								
MOLEX PART NO.	MOLEX HOUSING NO.	TERMINAL VOID POSITION	REMOVED POSITION KEYS	CONFIGURATION (SEE NOTES)	END WALLS		POLARIZING RB	COLOUR STRIPE
					FIRST	LAST		
91716-1501	91715-0006	NONE	NONE		OPEN	OPEN	NONE	NONE
91716-1502	91715-0306	NONE	ALL		OPEN	OPEN	BETWEEN CKT 3&4	NONE
91716-1503	91715-0006	NONE	c e f g		OPEN	OPEN	NONE	NONE
91716-1504	91715-0206	NONE	ALL		OPEN	OPEN	BETWEEN CKT 2&3	NONE
91716-1505	91715-0006	CKT 2, 5	d f		OPEN	OPEN	NONE	NONE
91716-1506	91715-0006	NONE	a b f g		OPEN	OPEN	NONE	NONE
91716-1507	91715-0006	NONE	e f		OPEN	OPEN	NONE	NONE
91716-1509	91715-0006	NONE	g		OPEN	OPEN	NONE	NONE
91716-1510	91715-0006	CKT 2	c f		OPEN	OPEN	NONE	NONE
91716-1511	91715-0006	CKT 2, 5	NONE		OPEN	OPEN	NONE	NONE
91716-1512	91715-0006	CKT 3, 5	NONE		OPEN	OPEN	NONE	NONE
91716-1513	91715-0006	CKT 2, 4	b d e f		OPEN	OPEN	NONE	NONE
91716-1514	91715-0106	CKT 3, 5	NONE		OPEN	OPEN	BETWEEN CKT 1&2	NONE
91716-1515	91715-0206	CKT 2, 5	NONE		OPEN	OPEN	BETWEEN CKT 2&3	NONE
91716-1516	91715-0306	NONE	c f		OPEN	OPEN	BETWEEN CKT 3&4	NONE
91716-1517	91715-0006	NONE	c e		OPEN	OPEN	NONE	NONE
91716-1518	91715-0006	CKT 2, 4	NONE		OPEN	OPEN	NONE	NONE
91716-1519	91715-0006	NONE	a c e		OPEN	OPEN	NONE	NONE
91716-1520	91715-0006	CKT 5	c e		OPEN	OPEN	NONE	NONE
91716-1521	91715-0006	CKT 2, 4, 5, 6	c e		OPEN	OPEN	NONE	NONE
91716-1522	91715-0006	CKT 2, 6	c e		OPEN	OPEN	NONE	NONE

6 CIRCUIT (cont'd)								
MOLEX PART NO.	MOLEX HOUSING NO.	TERMINAL VOID POSITION	REMOVED POSITION KEYS	CONFIGURATION (SEE NOTES)	END WALLS		POLARIZING RB	COLOUR STRIPE
					FIRST	LAST		
91716-1523	91715-0406	NONE	NONE		OPEN	OPEN	BETWEEN CKT 4&5	NONE
91716-1524	91715-0006	CKT 2, 4, 5, 6	NONE		OPEN	OPEN	NONE	NONE
91716-1525	91715-0006	CKT 2, 6	NONE		OPEN	OPEN	NONE	NONE
91716-1526	91715-0006	CKT 2, 5	NONE		OPEN	OPEN	NONE	NONE
91716-1527	91715-0006	CKT 2, 5	c e		OPEN	OPEN	NONE	NONE
91716-1528	91715-0006	CKT 2, 5	a b d f g		OPEN	OPEN	NONE	GREEN
91716-1529	91715-0006	NONE	d		OPEN	OPEN	NONE	NONE
91716-1531	91715-0006	CKT 1, 2, 3, 5	NONE		OPEN	OPEN	NONE	NONE
91716-1532	91715-0006	CKT 1, 2, 3, 5	d f		OPEN	OPEN	NONE	NONE
91716-1534	91715-0006	CKT 3, 4	b d f		OPEN	OPEN	NONE	NONE
91716-1535	91715-0006	CKT 4, 5	b d f		OPEN	OPEN	NONE	NONE
91716-1536	91715-0206	NONE	NONE		OPEN	OPEN	BETWEEN CKT 2&3	NONE
91716-1537	91715-0006	NONE	d		OPEN	OPEN	NONE	BLUE
91716-1538	91715-0006	CKT 2, 5	b d		OPEN	OPEN	NONE	NONE
91716-1539	91715-0006	CKT 5, 6	c f		OPEN	OPEN	NONE	NONE
91716-1540	91715-0006	CKT 2, 4	d e		OPEN	OPEN	NONE	GREEN
91716-1541	91715-0006	NONE	a f g		OPEN	OPEN	NONE	NONE
91716-1542	91715-0006	NONE	NONE		OPEN	OPEN	NONE	RED
91716-1543	91715-0506	NONE	NONE		OPEN	OPEN	BETWEEN 5&6	NONE
91716-1544	91715-0006	NONE	c e g		OPEN	OPEN	NONE	RED
91716-1545	91715-0006	NONE	d f		OPEN	OPEN	NONE	BLACK

NOTES
 1. + DENOTES TERMINAL VOIDED POSITION
 ● DENOTES TERMINAL LOADED POSITION
 | DENOTES POLARIZING RB POSITION
 2. HOUSING NUMBER FOR MOLEX REFERENCE ONLY

SEE SHEET 1 ELEC. NO. 912016-0963 DRAWING NUMBER 2016/01/20 CHECKED BY APPROVED BY DATE	QUALITY SYMBOLS	GENERAL TOLERANCES (UNLESS SPECIFIED)	DIMENSION STYLE	SCALE	DESIGN UNITS	THIRD ANGLE PROJECTION
	4 PLACES ± 0.05 3 PLACES ± 0.10 2 PLACES ± 0.2 1 PLACE ± 0.5 0 PLACE ± 1.0	mm INCH ± 0.05 ± 0.001 ± 0.10 ± 0.002 ± 0.2 ± 0.005 ± 0.5 ± 0.010 ± 1.0 ± 0.020	DRAWN BY: WKNAMAR DATE: 2004/02/12 CHECKED BY: JDENNEHY DATE: 2004/02/13 APPROVED BY: DATE: 2004/02/16 MATERIAL NO: BMAGU1RE	MM ONLY	1:1	METRIC
DRAFT WHERE APPLICABLE MUST REMAIN WITHIN DIMENSIONS		ANGULAR ±1/2° SEE CHARTS THIS DRAWING CONTAINS INFORMATION THAT IS PROPRIETARY TO MOLEX INCORPORATED AND SHOULD NOT BE USED WITHOUT WRITTEN PERMISSION	DOCUMENT NO. SD-91716-001		SHEET NO. 5 OF 10	

19	18	17	16	15	14	13	12	11	10	9	8	7	6	5	4	3	2	1
----	----	----	----	----	----	----	----	----	----	---	---	---	---	---	---	---	---	---

6 CIRCUIT (cont'd)								
MOLEX PART NO.	MOLEX HOUSING NO.	TERMINAL VOID POSITION	REMOVED POSITION KEYS	CONFIGURATION (SEE NOTES)	END WALLS		POLARIZING RB	COLOUR STRIPE
					FIRST	LAST		
91716-1546	91715-0006	NONE	a d		OPEN	OPEN	NONE	NONE
91716-1547	91715-0006	NONE	b e f		OPEN	OPEN	NONE	NONE
91716-1548	91715-0006	NONE	c d e		OPEN	OPEN	NONE	NONE
91716-1549	91715-0406	NONE	NONE		OPEN	OPEN	BETWEEN CRT 4&5	NONE
91716-1550	91715-0006	NONE	b d f		OPEN	OPEN	NONE	NONE
91716-1551	91715-0006	NONE	a c e g		OPEN	OPEN	NONE	NONE
91716-1552	91715-0006	NONE	a b d f		OPEN	OPEN	NONE	NONE
91716-1553	91715-0006	CCT 2, 5	c d		OPEN	OPEN	NONE	BLACK
91716-1554	91715-0006	CCT 3, 4	b		OPEN	OPEN	NONE	RED
91716-1555	91715-0006	NONE	c f		OPEN	OPEN	NONE	NONE
91716-1556	91715-0006	NONE	b d e g		OPEN	OPEN	NONE	NONE
91716-1557	91715-0006	CCT 3&4	b g		OPEN	OPEN	NONE	RED
91716-1558	91715-0006	NONE	d f		OPEN	OPEN	NONE	NONE
91716-1559	91715-0006	CCT 1	NONE		OPEN	OPEN	NONE	NONE
91716-1560	91715-0006	NONE	a c e f g		OPEN	OPEN	NONE	NONE
91716-1561	91715-0006	NONE	a d g		OPEN	OPEN	NONE	NONE
91716-1562	91715-0006	NONE	a c d e f g		OPEN	OPEN	NONE	NONE
91716-1563	91715-0006	CCT 5	a c d e f g		OPEN	OPEN	NONE	NONE
91716-1564	91715-0006	CCT 6	a c d e f g		OPEN	OPEN	NONE	NONE

6 CIRCUIT (cont'd)								
MOLEX PART NO.	MOLEX HOUSING NO.	TERMINAL VOID POSITION	REMOVED POSITION KEYS	CONFIGURATION (SEE NOTES)	END WALLS		POLARIZING RB	COLOUR STRIPE
					FIRST	LAST		
91716-1565	91715-0006	CCT 5	NONE		OPEN	OPEN	NONE	NONE
91716-1566	93473-0006	NONE	NONE		OPEN	OPEN	NONE	NONE
91716-1567	93473-0006	NONE	d f		OPEN	OPEN	NONE	NONE
91716-1568	93473-0006	CCT 1	NONE		OPEN	OPEN	NONE	NONE
91716-1569	93473-0006	NONE	a c d e f g		OPEN	OPEN	NONE	NONE
91716-1570	93473-0006	CCT 5	a c d e f g		OPEN	OPEN	NONE	NONE
91716-1571	93473-0006	CCT 5	NONE		OPEN	OPEN	NONE	NONE
91716-1572	93473-0006	NONE	d		OPEN	OPEN	NONE	PURPLE
91716-1573	91715-0006	CCT 2, 5	c e g		OPEN	OPEN	NONE	RED

NOTES
 1. + DENOTES TERMINAL VOIDED POSITION
 ● DENOTES TERMINAL LOADED POSITION
 † DENOTES POLARIZING RB POSITION
 2. HOUSING NUMBER FOR MOLEX REFERENCE ONLY

SEE SHEET 1 Dwg. No. 162016-0063 DRAWING NUMBER CHNOC APPROVED BY BG DATE 20/06/05 20/06/05	QUALITY SYMBOLS 	GENERAL TOLERANCES (UNLESS SPECIFIED) 4 PLACES ± 0.25 3 PLACES ± 0.05 2 PLACES ± 0.10 1 PLACE ± 0.2 0 PLACE ±	DIMENSION STYLE MM ONLY DRAWN BY: WKNMAR CHECKED BY: JDENNEHY APPROVED BY: BMAGUIRE DATE: 2004/02/12 DATE: 2004/02/13 DATE: 2004/02/16	SCALE: 1:1 DESIGN UNITS: METRIC THIRD ANGLE PROJECTION	TITLE: APPLI-MATE 2.5 FEMALE (MATL: NYLON PA6)
	ANGULAR ± 1/2° DRAFT WHERE APPLICABLE MUST REMAIN WITHIN DIMENSIONS		SEE CHARTS	MATERIAL NO.: DOCUMENT NO.: SD-91716-001	SHEET NO.: 6 OF 10
	THIS DRAWING CONTAINS INFORMATION THAT IS PROPRIETARY TO MOLEX INCORPORATED AND SHOULD NOT BE USED WITHOUT WRITTEN PERMISSION				

20 19 18 17 16 15 14 13 12 11 10 9 8 7 6 5 4 3 2 1

7 CIRCUIT				CONFIGURATION (SEE NOTES)	END WALLS		POLARIZING RIB	COLOUR STRIPE
MOLEX PART NO.	MOLEX HOUSING NO.	TERMINAL VOID POSITION	REMOVED POSITION KEYS		FIRST	LAST		
9176-2001	9175-0007	NONE	NONE	00000000 1234567	OPEN	OPEN	NONE	NONE
9176-2002	9175-0207	NONE	ALL	00000000 1234567	OPEN	OPEN	BETWEEN CKT 2&3	NONE
9176-2004	9175-0007	NONE	a	00000000 1234567	OPEN	OPEN	NONE	NONE
9176-2005	9175-0007	CKT 2	h	00000000 1234567	OPEN	OPEN	NONE	NONE
9176-2006	9175-0007	CKT 4	a	00000000 1234567	OPEN	OPEN	NONE	NONE
9176-2007	9175-0007	CKT 2	NONE	00000000 1234567	OPEN	OPEN	NONE	NONE
9176-2008	9175-0007	CKT 6	NONE	00000000 1234567	OPEN	OPEN	NONE	NONE
9176-2009	9175-0007	CKT 2	b c e g	00000000 1234567	OPEN	OPEN	NONE	BLUE
9176-2010	9175-0007	CKT 4, 6	b d f	00000000 1234567	OPEN	OPEN	NONE	RED
9176-2011	9175-0007	CKT 4, 6	b d f	00000000 1234567	OPEN	OPEN	NONE	BLUE
9176-2012	9175-0007	CKT 2	NONE	00000000 1234567	OPEN	OPEN	NONE	BLUE
9176-2013	9175-0007	CKT 2	b d e f h	00000000 1234567	OPEN	OPEN	NONE	BLUE
9176-2014	9175-0007	CKT 4, 6	NONE	00000000 1234567	OPEN	OPEN	NONE	BLUE
9176-2015	9175-0007	CKT 4, 6	c d e f h	00000000 1234567	OPEN	OPEN	NONE	BLUE
9176-2016	9175-0007	CKT 6	c d e f h	00000000 1234567	OPEN	OPEN	NONE	BLUE
9176-2017	9175-0007	CKT 6	c d e f	00000000 1234567	OPEN	OPEN	NONE	BLUE
9176-2018	9175-0007	CKT 6	NONE	00000000 1234567	OPEN	OPEN	NONE	BLUE
9176-2019	9175-0007	CKT 2	NONE	00000000 1234567	OPEN	OPEN	NONE	BLACK
9176-2020	9175-0007	NONE	a c e f h	00000000 1234567	OPEN	OPEN	NONE	NONE
9176-2021	9175-0007	NONE	a	00000000 1234567	OPEN	OPEN	NONE	BLACK
9176-2022	9175-0007	NONE	b c d f	00000000 1234567	OPEN	OPEN	NONE	NONE
9176-2023	9175-0007	NONE	a a	00000000 1234567	OPEN	OPEN	NONE	NONE
9176-2024	9175-0007	NONE	a b e f	00000000 1234567	OPEN	OPEN	NONE	NONE
9176-2025	9175-0507	NONE	NONE	00000000 1234567	OPEN	OPEN	BETWEEN CKT 6&6	NONE
9176-2026	9175-0007	NONE	ALL	00000000 1234567	OPEN	OPEN	NONE	NONE
9176-2027	9175-0007	CKT 6	a c d e f	00000000 1234567	OPEN	OPEN	NONE	BLUE

7 CIRCUIT (cont'd)									
MOLEX PART NO.	MOLEX HOUSING NO.	TERMINAL VOID POSITION	REMOVED POSITION KEYS	CONFIGURATION (SEE NOTES)	END WALLS		POLARIZING RIB	COLOUR STRIPE	LOCKING RETENTION FEATURE
FIRST	LAST								
9176-2028	9175-0007	CKT 1,2,3,4,6	a c f	00000000 1234567	OPEN	OPEN	NONE	NONE	
9176-2029	9175-0007	CKT 4	a	00000000 1234567	OPEN	OPEN	NONE	RED	
9176-2030	88473-0307	NONE	ALL	00000000 1234567	OPEN	OPEN	BETWEEN CKT 3&4	NONE	LOCKING RETENTION FEATURE
9176-2031	9175-0307	NONE	ALL	00000000 1234567	OPEN	OPEN	BETWEEN CKT 3&4	NONE	
9176-2032	88473-0007	NONE	NONE	00000000 1234567	OPEN	OPEN	NONE	NONE	LOCKING RETENTION FEATURE
9176-2033	9175-0627	NONE	NONE	00000000 1234567	CLOSED	CLOSED	BETWEEN CKT 6&7	NONE	

NOTES
 1. + DENOTES TERMINAL VOIDED POSITION
 ● DENOTES TERMINAL LOADED POSITION
 † DENOTES POLARIZING RIB POSITION
 2. HOUSING NUMBER FOR MOLEX REFERENCE ONLY

SEE SHEET 1 EC NO. PE2016-0063 DRAWN BY MURPHY CHECKED APPROVED BY DATE 20/6/10/05 20/6/10/20	QUALITY SYMBOLS	GENERAL TOLERANCES (UNLESS SPECIFIED)	DIMENSION STYLE	SCALE	DESIGN UNITS	THIRD ANGLE PROJECTION
		mm INCH	MM ONLY	1:1	METRIC	
		4 PLACES ± 0.10	DRAWN BY WKNAMAR	DATE 2004/02/12	TITLE APPLI-MATE 2.5 FEMALE (MATL: NYLON PA6)	
		3 PLACES ± 0.05	CHECKED BY J DENEHY	DATE 2004/02/13	molex	
	2 PLACES ± 0.10	APPROVED BY BMAGUIRE	DATE 2004/02/16	PARTIAL NO.	DOCUMENT NO.	SHEET NO.
	1 PLACE ± 0.2					SD-91716-001
	0 PLACE ±					7 OF 10
	ANGULAR ±1/2°	SEE CHARTS		THIS DRAWING CONTAINS INFORMATION THAT IS PROPRIETARY TO MOLEX INCORPORATED AND SHOULD NOT BE USED WITHOUT WRITTEN PERMISSION		
	DRAFT WHERE APPLICABLE MUST REMAIN WITHIN DIMENSIONS					

16 Frame ALP AH-T Rev. E1 2010/01/25 19 18 17 16 15 14 13 12 11 10 9 8 7 6 5 4 3 2 1

20 19 18 17 16 15 14 13 12 11 10 9 8 7 6 5 4 3 2 1

8 CIRCUIT								
MOLEX PART NO.	MOLEX HOUSING NO.	TERMINAL VOID POSITION	REMOVED POSITION KEYS	CONFIGURATION (SEE NOTES)	END WALLS		POLARIZING RIB	COLOUR STRIPE
					FIRST	LAST		
91716-2501	91715-0008	NONE	NONE	nnnnnnnn ①②③④⑤⑥⑦⑧ 12345678	OPEN	OPEN	NONE	NONE
91716-2502	91715-0308	NONE	NONE	nnnnnnnn ①②③④⑤⑥⑦⑧ 12345678	OPEN	OPEN	BETWEEN CKT 3&4	NONE
91716-2503	91715-0008	NONE	c f h i	nn--nn-- ①②③④⑤⑥⑦⑧ 12345678	OPEN	OPEN	NONE	NONE
91716-2504	91715-0008	NONE	b c d h i	n--cnnnhi ①②③④⑤⑥⑦⑧ 12345678	OPEN	OPEN	NONE	NONE
91716-2505	91715-0008	NONE	b c g h	n--cnnnhi ①②③④⑤⑥⑦⑧ 12345678	OPEN	OPEN	NONE	BLUE
91716-2506	91715-0008	NONE	c f	nn--nn-- ①②③④⑤⑥⑦⑧ 12345678	OPEN	OPEN	NONE	NONE
91716-2507	91715-0008	NONE	c f h i	nn--nn-- ①②③④⑤⑥⑦⑧ 12345678	OPEN	OPEN	NONE	BLUE
91716-2508	91715-0008	NONE	NONE	nnnnnnnn ①②③④⑤⑥⑦⑧ 12345678	OPEN	OPEN	NONE	BLUE
91716-2509	91715-0008	NONE	a c d e g i	an--cdegi ①②③④⑤⑥⑦⑧ 12345678	OPEN	OPEN	NONE	BLUE
91716-2510	91715-0008	NONE	c d e f	nn--cdef ①②③④⑤⑥⑦⑧ 12345678	OPEN	OPEN	NONE	BLUE
91716-2511	91715-0008	NONE	NONE	nnnnnnnn ①②③④⑤⑥⑦⑧ 12345678	OPEN	OPEN	NONE	BLACK
91716-2512	91715-0008	NONE	c f h i	nn--nn-- ①②③④⑤⑥⑦⑧ 12345678	OPEN	OPEN	NONE	BLACK
91716-2513	91715-0008	NONE	c d g h	nn--cdgh ①②③④⑤⑥⑦⑧ 12345678	OPEN	OPEN	NONE	NONE
91716-2514	91715-0008	NONE	a c d e f g h i	an--cdefghi ①②③④⑤⑥⑦⑧ 12345678	OPEN	OPEN	NONE	BLUE
91716-2515	91715-0008	NONE	a b d f h i	an--bdfghi ①②③④⑤⑥⑦⑧ 12345678	OPEN	OPEN	NONE	NONE
91716-2516	91715-0008	NONE	b c d h i	n--cnnnhi ①②③④⑤⑥⑦⑧ 12345678	OPEN	OPEN	NONE	BLUE
91716-2517	91715-0008	NONE	NONE	nnnnnnnn ①②③④⑤⑥⑦⑧ 12345678	OPEN	OPEN	BETWEEN CKT 1&2 + CKT 7&8	NONE
91716-2518	91715-0008	NONE	b c d f h i	n--cdfghi ①②③④⑤⑥⑦⑧ 12345678	OPEN	OPEN	NONE	NONE
91716-2519	91715-0008	NONE	a c e f h i	an--cefghi ①②③④⑤⑥⑦⑧ 12345678	OPEN	OPEN	NONE	NONE
91716-2520	91715-0008	NONE	ALL	abcd--gh ①②③④⑤⑥⑦⑧ 12345678	OPEN	OPEN	NONE	NONE
91716-2521	91715-0008	CKT 7, 8	a b d f h i	an--bdfghi ①②③④⑤⑥⑦⑧ 12345678	OPEN	OPEN	NONE	NONE
91716-2522	91715-0008	NONE	b c d f h i	n--cdfghi ①②③④⑤⑥⑦⑧ 12345678	OPEN	OPEN	NONE	BLUE

NOTES
 1. + DENOTES TERMINAL VOIDED POSITION
 ● DENOTES TERMINAL LOADED POSITION
 | DENOTES POLARIZING RIB POSITION
 2. HOUSING NUMBER FOR MOLEX REFERENCE ONLY

SEE SHEET 1 REC. NO. 162016-0963 DRAWN BY MURPHY CHKD. CHANDRASEKHARAN APPROVED BY MURPHY DATE 20/01/05 20/01/05	QUALITY SYMBOLS	GENERAL TOLERANCES (UNLESS SPECIFIED)	DIMENSION STYLE	SCALE	DESIGN UNITS	THIRD ANGLE PROJECTION
	▽=0	mm INCH	MM ONLY	1:1	METRIC	
	▽=0	4 PLACES ±.005	DRAWN BY WKNAMAR	DATE 2004/02/12	TITLE APPLI-MATE 2.5 FEMALE (MATL: NYLON PA6)	
	▽=0	3 PLACES ±.010	CHECKED BY JDENNEHY	DATE 2004/02/13		
	1 PLACE ±.02	APPROVED BY BMAGUIRE	DATE 2004/02/16			
	0 PLACE ±	ANGULAR ±1/2°	SEE CHARTS			
		DRAFT WHERE APPLICABLE MUST REMAIN WITHIN DIMENSIONS	INCORPORATED AND SHOULD NOT BE USED WITHOUT WRITTEN PERMISSION			

16 Frame AT P. AM-T Rev. E1 2002/01/25 19 18 17 16 15 14 13 12 11 10 9 8 7 6 5 4 3 2 1

8 CIRCUIT (cont'd)

MOLEX PART NO.	MOLEX HOUSING NO.	TERMINAL VOID POSITION	REMOVED POSITION KEYS	CONFIGURATION (SEE NOTES)	END WALLS		POLARIZING RB	COLOUR STRIPE
					FIRST	LAST		
9176-2521	9175-0008	CKT 7, 8	a b d f h i		OPEN	OPEN	NONE	NONE
9176-2522	9175-0008	NONE	b c d f h i		OPEN	OPEN	NONE	BLUE

10 CIRCUIT

MOLEX PART NO.	MOLEX HOUSING NO.	TERMINAL VOID POSITION	REMOVED POSITION KEYS	CONFIGURATION (SEE NOTES)	END WALLS		POLARIZING RB	COLOUR STRIPE
					FIRST	LAST		
9176-3501	9175-0010	NONE	NONE		OPEN	OPEN	NONE	NONE
9176-3502	9175-0210	NONE	ALL		OPEN	OPEN	BETWEEN CKT 2&3	NONE
9176-3503	9175-0010	CKT 2, 5, 7, 9	NONE		OPEN	OPEN	NONE	NONE
9176-3504	9175-0410	NONE	NONE		OPEN	OPEN	BETWEEN CKT 4&5	NONE

9 CIRCUIT

MOLEX PART NO.	MOLEX HOUSING NO.	TERMINAL VOID POSITION	REMOVED POSITION KEYS	CONFIGURATION (SEE NOTES)	END WALLS		POLARIZING RB	COLOUR STRIPE
					FIRST	LAST		
9176-3001	9175-0009	NONE	NONE		OPEN	OPEN	NONE	NONE
9176-3002	9175-0409	NONE	NONE		OPEN	OPEN	BETWEEN CKT 4&5	NONE
9176-3003	9175-0009	CKT 2, 5, 8	NONE		OPEN	OPEN	NONE	NONE
9176-3004	9175-0209	NONE	NONE		OPEN	OPEN	BETWEEN CKT 2&3	NONE
9176-3005	9175-0009	CKT 2, 5, 8	b c e g i j		OPEN	OPEN	NONE	GREEN
9176-3006	9175-0009	CKT 2, 5, 8	NONE		OPEN	OPEN	NONE	GREEN
9176-3007	9175-0009	CKT 2, 5, 8	b c e f g i j		OPEN	OPEN	NONE	GREEN
9176-3008	9175-0009	CKT 2, 5, 8	b c e f g i		OPEN	OPEN	NONE	GREEN
9176-3009	9175-0009	CKT 2, 5, 7	c g		OPEN	OPEN	NONE	NONE
9176-3010	9175-0009	CKT 2, 5, 8	b c h i		OPEN	OPEN	NONE	NONE
9176-3011	9175-0709	NONE	NONE		OPEN	OPEN	BETWEEN CKT 7&8	NONE
9176-3012	9175-0509	NONE	NONE		OPEN	OPEN	BETWEEN CKT 5&6	NONE
9176-3013	9175-0029	NONE	NONE		CLOSED	CLOSED	NONE	NONE

11 CIRCUIT

MOLEX PART NO.	MOLEX HOUSING NO.	TERMINAL VOID POSITION	REMOVED POSITION KEYS	CONFIGURATION (SEE NOTES)	END WALLS		POLARIZING RB	COLOUR STRIPE
					FIRST	LAST		
9176-4001	9175-0011	NONE	NONE		OPEN	OPEN	NONE	NONE
9176-4002	9175-0031	NONE	NONE		CLOSED	CLOSED	NONE	NONE
9176-4003	9175-0511	NONE	NONE		OPEN	OPEN	BETWEEN CKT 5&6	NONE
9176-4004	9175-1031	NONE	NONE		CLOSED	CLOSED	BETWEEN CKT 10&11	NONE
9176-4005	9175-1011	NONE	NONE		OPEN	OPEN	BETWEEN CKT 10&11	NONE

12 CIRCUIT

MOLEX PART NO.	MOLEX HOUSING NO.	TERMINAL VOID POSITION	REMOVED POSITION KEYS	CONFIGURATION (SEE NOTES)	END WALLS		POLARIZING RB	COLOUR STRIPE
					FIRST	LAST		
9176-4501	9175-0012	NONE	NONE		OPEN	OPEN	NONE	NONE
9176-4502	9175-0012	CKT 2, 5, 8, 11	b c d e j k l		OPEN	OPEN	NONE	GREEN
9176-4503	9175-0012	CKT 2, 5, 8, 11	NONE		OPEN	OPEN	NONE	GREEN
9176-4504	9175-0012	CKT 2, 5, 8, 11	a c d e g h i k l m		OPEN	OPEN	NONE	GREEN
9176-4505	9175-0012	CKT 2, 5, 8, 11	c d e g h i k l m		OPEN	OPEN	NONE	GREEN

- NOTES
- * DENOTES TERMINAL VOIDED POSITION
 - DENOTES TERMINAL LOADED POSITION
 - ↑ DENOTES POLARIZING RB POSITION
2. HOUSING NUMBER FOR MOLEX REFERENCE ONLY

SEE SHEET 1 SEC. NO. 162016-0063 DRAWN BY MURPHY CHECKED BY APPELWASHAWAN DATE 2004/01/05 REV. 2004/01/20	QUALITY SYMBOLS	GENERAL TOLERANCES (UNLESS SPECIFIED)	DIMENSION STYLE	SCALE	DESIGN UNITS	THIRD ANGLE PROJECTION
	$\nabla=0$ $\nabla=0$	mm INCH 4 PLACES ± 0.15 ± 0.005 3 PLACES ± 0.10 ± 0.005 2 PLACES ± 0.25 ± 0.010 1 PLACE ± 0.50 ± 0.020	MM ONLY DRAWN BY DATE CHECKED BY DATE APPROVED BY DATE DATE	5:1	METRIC	APPLI-MATE 2.5 FEMALE (MATL: NYLON PA6)
	ANGULAR ±1/2° DRAFT WHERE APPLICABLE MUST REMAIN WITHIN DIMENSIONS	SEE CHARTS INCORPORATED AND SHOULD NOT BE USED WITHOUT WRITTEN PERMISSION	MATERIAL NO. SD-91716-001 DOCUMENT NO. SD-91716-001 SHEET NO. 9 OF 10			
	THIS DRAWING CONTAINS INFORMATION THAT IS PROPRIETARY TO MOLEX					

13 CIRCUIT

MOLEX PART NO.	MOLEX HOUSING NO.	TERMINAL VOID POSITION	REMOVED POSITION KEYS	CONFIGURATION (SEE NOTES)	END WALLS		POLARIZING RIB	COLOUR STRIPE
					FIRST	LAST		
91716-5001	91715-0013	NONE	NONE	①②③④⑤⑥⑦⑧⑨⑩⑪⑫⑬⑭⑮⑯ 1 2 3 4 5 6 7 8 9 10 11 12 13	OPEN	OPEN	NONE	NONE
91716-5002	91715-0013	CKT 4, 6, 8, 10, 12	NONE	①②③④⑤⑥⑦⑧⑨⑩⑪⑫⑬⑭⑮⑯ 1 2 3 4 5 6 7 8 9 10 11 12 13	OPEN	OPEN	NONE	NONE
91716-5003	91715-0013	NONE	c f h i k l	①②③④⑤⑥⑦⑧⑨⑩⑪⑫⑬⑭⑮⑯ 1 2 3 4 5 6 7 8 9 10 11 12 13	OPEN	OPEN	NONE	NONE

17 CIRCUIT

MOLEX PART NO.	MOLEX HOUSING NO.	TERMINAL VOID POSITION	REMOVED POSITION KEYS	CONFIGURATION (SEE NOTES)	END WALLS		POLARIZING RIB	COLOUR STRIPE
					FIRST	LAST		
91716-7001	91715-0017	NONE	NONE	①②③④⑤⑥⑦⑧⑨⑩⑪⑫⑬⑭⑮⑯⑰⑱⑲ 1 2 3 4 5 6 7 8 9 10 11 12 13 14 15 16 17	OPEN	OPEN	NONE	NONE

14 CIRCUIT

MOLEX PART NO.	MOLEX HOUSING NO.	TERMINAL VOID POSITION	REMOVED POSITION KEYS	CONFIGURATION (SEE NOTES)	END WALLS		POLARIZING RIB	COLOUR STRIPE
					FIRST	LAST		
91716-5501	91715-0014	NONE	NONE	①②③④⑤⑥⑦⑧⑨⑩⑪⑫⑬⑭⑮⑯ 1 2 3 4 5 6 7 8 9 10 11 12 13 14	OPEN	OPEN	NONE	NONE

18 CIRCUIT

MOLEX PART NO.	MOLEX HOUSING NO.	TERMINAL VOID POSITION	REMOVED POSITION KEYS	CONFIGURATION (SEE NOTES)	END WALLS		POLARIZING RIB	COLOUR STRIPE
					FIRST	LAST		
91716-7501	91715-0018	NONE	NONE	①②③④⑤⑥⑦⑧⑨⑩⑪⑫⑬⑭⑮⑯⑰⑱⑲ 1 2 3 4 5 6 7 8 9 10 11 12 13 14 15 16 17 18	OPEN	OPEN	NONE	NONE

15 CIRCUIT

MOLEX PART NO.	MOLEX HOUSING NO.	TERMINAL VOID POSITION	REMOVED POSITION KEYS	CONFIGURATION (SEE NOTES)	END WALLS		POLARIZING RIB	COLOUR STRIPE
					FIRST	LAST		
91716-6001	91715-0015	NONE	NONE	①②③④⑤⑥⑦⑧⑨⑩⑪⑫⑬⑭⑮⑯ 1 2 3 4 5 6 7 8 9 10 11 12 13 14 15	OPEN	OPEN	NONE	NONE
91716-6002	91715-0015	CKT 4, 6, 8, 10, 12, 14	o p	①②③④⑤⑥⑦⑧⑨⑩⑪⑫⑬⑭⑮⑯ 1 2 3 4 5 6 7 8 9 10 11 12 13 14 15	OPEN	OPEN	NONE	NONE
91716-6003	91715-0015	NONE	a p	①②③④⑤⑥⑦⑧⑨⑩⑪⑫⑬⑭⑮⑯ 1 2 3 4 5 6 7 8 9 10 11 12 13 14 15	OPEN	OPEN	BETWEEN 8 & 6	NONE

19 CIRCUIT

MOLEX PART NO.	MOLEX HOUSING NO.	TERMINAL VOID POSITION	REMOVED POSITION KEYS	CONFIGURATION (SEE NOTES)	END WALLS		POLARIZING RIB	COLOUR STRIPE
					FIRST	LAST		
91716-8001	91715-0019	NONE	NONE	①②③④⑤⑥⑦⑧⑨⑩⑪⑫⑬⑭⑮⑯⑰⑱⑲ 1 2 3 4 5 6 7 8 9 10 11 12 13 14 15 16 17 18 19	OPEN	OPEN	NONE	NONE

16 CIRCUIT

MOLEX PART NO.	MOLEX HOUSING NO.	TERMINAL VOID POSITION	REMOVED POSITION KEYS	CONFIGURATION (SEE NOTES)	END WALLS		POLARIZING RIB	COLOUR STRIPE
					FIRST	LAST		
91716-6501	91715-0016	NONE	NONE	①②③④⑤⑥⑦⑧⑨⑩⑪⑫⑬⑭⑮⑯ 1 2 3 4 5 6 7 8 9 10 11 12 13 14 15 16	OPEN	OPEN	NONE	NONE

20 CIRCUIT

MOLEX PART NO.	MOLEX HOUSING NO.	TERMINAL VOID POSITION	REMOVED POSITION KEYS	CONFIGURATION (SEE NOTES)	END WALLS		POLARIZING RIB	COLOUR STRIPE
					FIRST	LAST		
91716-8501	91715-0020	NONE	NONE	①②③④⑤⑥⑦⑧⑨⑩⑪⑫⑬⑭⑮⑯⑰⑱⑲ 1 2 3 4 5 6 7 8 9 10 11 12 13 14 15 16 17 18 19 20	OPEN	OPEN	NONE	NONE

- NOTES:
- + DENOTES TERMINAL VOIDED POSITION
● DENOTES TERMINAL LOADED POSITION
| DENOTES POLARIZING RIB POSITION
 - HOUSING NUMBER FOR MOLEX REFERENCE ONLY

SEE SHEET 1 SEC. NO. 162016-0963 DRAWING IMPRINT CHECKED: BG APPROVED: MAMUN DATE: 2016/01/05 REVISION: 2016/01/20	QUALITY SYMBOLS	GENERAL TOLERANCES (UNLESS SPECIFIED)	DIMENSION STYLE	SCALE	DESIGN UNITS	THIRD ANGLE PROJECTION	
		mm INCH	MM ONLY	1:1	METRIC		
		4 PLACES ± 0.05	DRAWN BY: NKNAMAR DATE: 2004/02/12				TITLE: APPLI-MATE 2.5 FEMALE (MATL: NYLON PA6)
		3 PLACES ± 0.10	CHECKED BY: JDENNEHY DATE: 2004/02/13				
	2 PLACES ± 0.2	APPROVED BY: BMAGUIRE DATE: 2004/02/16					
	1 PLACE ±	MATERIAL: NYLON PA6					
	0 PLACE ±	ANGULAR ± 1/2°					
		DRAFT WHERE APPLICABLE MUST REMAIN WITHIN DIMENSIONS					
		SEE CHARTS					
		THIS DRAWING CONTAINS INFORMATION THAT IS PROPRIETARY TO MOLEX INCORPORATED AND SHOULD NOT BE USED WITHOUT WRITTEN PERMISSION					
						DOCUMENT NO. SD-91716-001	
						SHEET NO. 10 OF 10	