

Excellent Integrated System Limited

Stocking Distributor

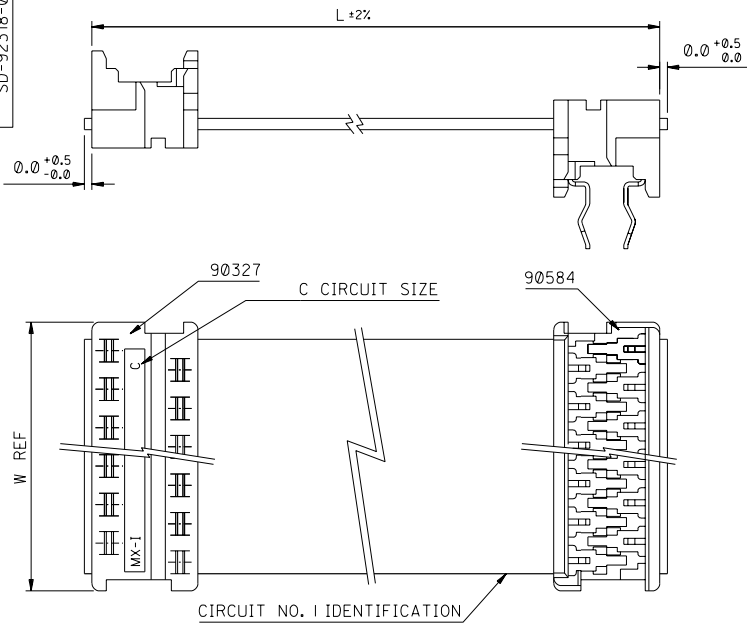
Click to view price, real time Inventory, Delivery & Lifecycle Information:

[Molex Connector Corporation](#)
[0923181207](#)

For any questions, you can email us directly:

sales@integrated-circuit.com

PART NO. SEE CHART
DRAWING NO. SD-92318-001



90327 CONNECTOR	
CIRCUIT SIZE	DIMENSION W
4	7.59
6	10.13
8	12.67
10	15.21
12	17.75
14	20.29
16	22.83
18	25.37
20	27.91
22	30.45
24	32.99
26	35.53

90584 CONNECTOR	
CIRCUIT SIZE	DIMENSION W
4	7.59
6	10.13
8	12.67
10	15.21
12	17.75
14	20.29
16	22.83
18	25.37
20	27.91
22	30.45
24	32.99
26	35.53

CABLE DETAILS:
28 AWG, 1.27 MM PITCH, 7 STRANDS WITH TINNED COPPER, GREY PVC INSULATION WITH A COLOURED POLARITY STRIPE INDICATING CIRCUIT NO. 1, UL 2651.

- NOTES:
1. SEE PRODUCT SPECIFICATIONS PS-99020-0011.
 2. SEE TERMINATION SPECIFICATION ES-99033-0001.
 3. SEE TERMINATION SPECIFICATION ES-99033-0002.
 4. SEE CABLE SPECIFICATION ES-99027-0006.
 5. HARNESSSES WILL BE 100% ELECTRICALLY TESTED FOR SHORTS AND DISCONTINUITIES.

ORDERING INFORMATION

92318-****
CIRCUIT SIZE
LENGTH L IN CENTIMETRES
LENGTHS AVAILABLE FROM 6 CM TO 120 CM
e.g. 92318-1208 = 12 CIRCUIT WITH LENGTH L OF 8 CM.

NOTE : FOR LENGTHS OF
100 CM , THE PART NO. IS 92318-***01
105 CM , THE PART NO. IS 92318-***02
110 CM , THE PART NO. IS 92318-***03
115 CM , THE PART NO. IS 92318-***04
120 CM , THE PART NO. IS 92318-***05

REF DIM ADDED EC NO. 2003-0499 DRAWING FILE NO. 02/11/13 CHK: / / / / APPR: / / / / REV: C	QUALITY SYMBOLS MAJOR = CRITICAL =	GENERAL TOLERANCES: (UNLESS SPECIFIED): 4 PLACES ±0.1 mm ±.1 INCH 3 PLACES ±0.2 mm ±.2 INCH 2 PLACES ±0.3 mm ±.3 INCH 1 PLACE ±0.5 mm ±.5 INCH ANGULAR: ± 1/2°	SCALE 4 : 1 DESIGN UNITS <input checked="" type="checkbox"/> mm <input type="checkbox"/> INCH DRAWN BY & DATE MCURRAN 98/06/24 CHECKED BY & DATE AMCCANN 98/06/24 APPROVED BY & DATE MWILHITE 98/06/24 CAD FILENAME	DIMENSIONS: <input type="checkbox"/> mm <input type="checkbox"/> INCH <input checked="" type="checkbox"/> mm ONLY THIRD ANGLE PROJECTION TITLE: PICOFLEX IDT TO BOARD-IN STANDARD ASSEMBLIES (Z-STYLE) MOLEX INCORPORATED	SHT 1 REV REVISE ON CAD ONLY
	MATERIAL NO. SEE CHART DRAWING NO. SD-92318-001 SHEET NO. 1 OF 1 SIZE B				
	DRAFT WHERE APPLICABLE MUST REMAIN WITHIN DIMENSIONS THIS DRAWING CONTAINS INFORMATION THAT IS PROPRIETARY TO MOLEX INCORPORATED AND SHOULD NOT BE USED WITHOUT WRITTEN PERMISSION.				